

CERTIFICATE OF LOCATION OF GOVERNMENT CORNER

County of Anoka

State of Minnesota

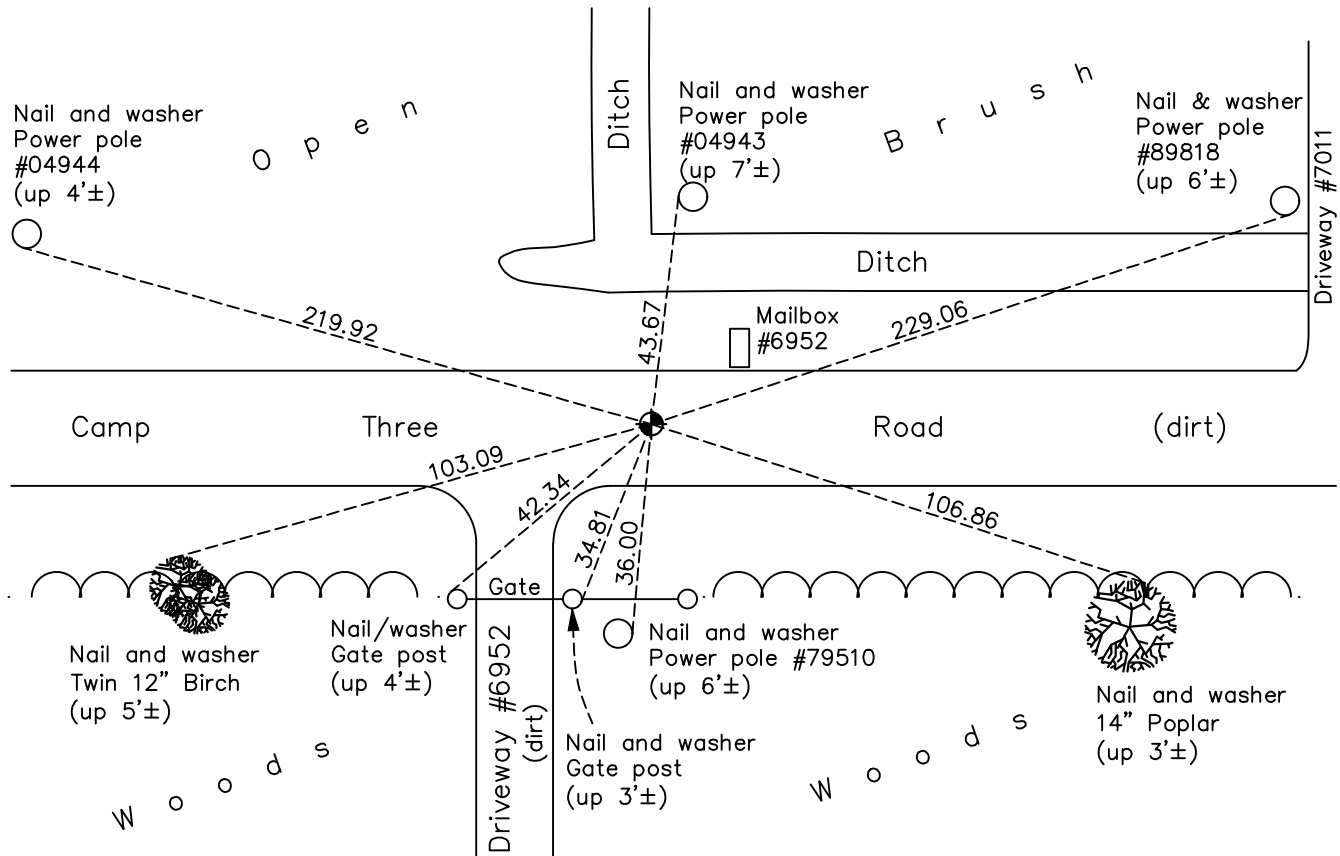
North 1/4 Corner of Sec. 21 Township 32 Range 22

On the ____ day of July, 1967, the described corner was evidenced by a 1/2" iron pipe

and to perpetuate the location of said corner, at the exact location thereof, a permanent marker was placed consisting of a cast iron monument

AND on the 6th day of June, 2022, said permanent marker was found down 1.6'± and the ties were updated

Updated reference ties are as shown below.



Revision Date
 11/29/2022

N.A.D. 1983 Coordinates
 (1996 Adjustment)

County Project Coordinates	
Northing	179959.2901
Easting	545281.7544
Date	6/24/03

I hereby certify that this United States public land survey monument record is correct and complete to the best of my knowledge and belief.

David Zieglmeier Date 12/8/23

David Zieglmeier Anoka County Surveyor
 Minnesota License Number 46179

HISTORY OF GOVERNMENT CORNER

Page No. 72

County of Anoka

State of Minnesota

North 1/4 Corner of Sec. 21 Township 32 Range 22

CORNER HISTORY:

July 1967 - James Kurth found a 1/2" open end iron pipe in gravel road and updated ties.

August 23, 1968 - Found 1/2" iron pipe down 0.3'± and replaced with a cast iron monument down 0.6'±. Updated ties.

June 7, 1973 - Found cast iron monument and updated ties.

August 10, 1976 - Found cast iron monument and updated ties.

August 1, 1979 - Found cast iron monument and updated ties.

July 22, 1982 - Found cast iron monument and updated ties.

August 6, 1985 - Found cast iron monument and updated ties.

August 11, 1989 - Found cast iron monument down 1.5'± and updated ties.

December 26, 1995 - Found cast iron monument and updated ties.

June 24, 2003 - Established NAD 1983 (1996 adj.) Anoka County project coordinates by static GPS methods.

November 14, 2007 - Found cast iron monument down 2'± and updated ties.

September 12, 2014 - Found cast iron monument down 2'±. Verified position by VRS GPS methods. Updated ties.

August 9, 2019 - Found cast iron monument down 2'± and updated ties.

June 6, 2022 - Found cast iron monument down 1.6'± verified position by VRS GPS method and updated ties.