

# CERTIFICATE OF LOCATION OF GOVERNMENT CORNER

County of Anoka

State of Minnesota

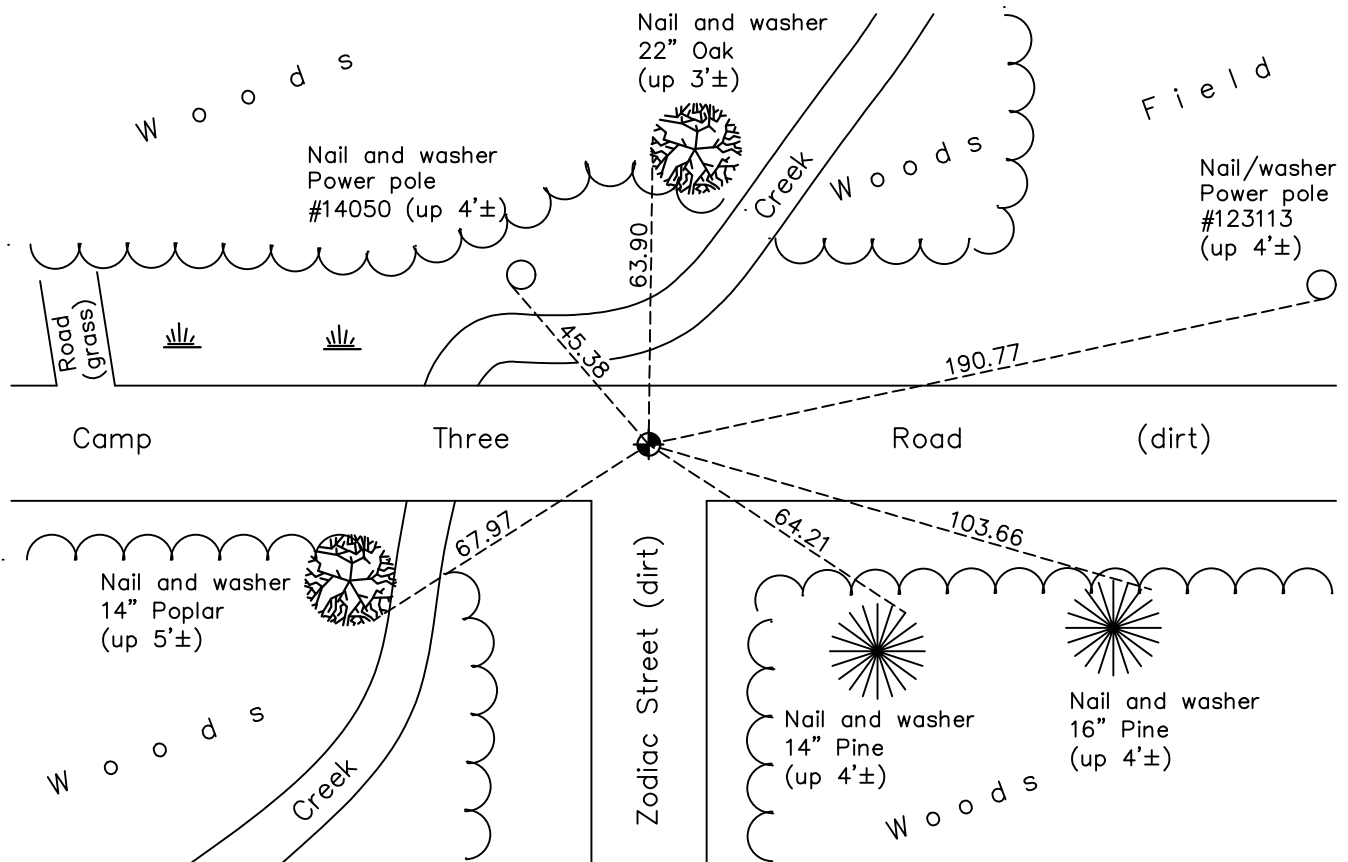
## Northeast Corner of Sec. 20 Township 32 Range 22

On the 4th day of June, 1962, the described corner was evidenced by a broken off concrete monument

and to perpetuate the location of said corner, at the exact location thereof, a permanent marker was placed consisting of a cast iron monument on top of the concrete monument down 1.6'±

AND on the 6th day of June, 2022, said permanent marker was found down 1.6'± and the ties were updated

Updated reference ties are as shown below.



Revision Date  
11/29/2022

N.A.D. 1983 Coordinates  
(1996 Adjustment)

County Project Coordinates	
Northing	<u>179939.4957</u>
Easting	<u>542682.4635</u>
Date	<u>3/19/03</u>

I hereby certify that this United States public land survey monument record is correct and complete to the best of my knowledge and belief.

*David Zieglmeier* Date 12/8/23

David Zieglmeier Anoka County Surveyor  
Minnesota License Number 46179

# HISTORY OF GOVERNMENT CORNER

Page No. 73

County of Anoka

State of Minnesota

## Northeast Corner of Sec. 20 Township 32 Range 22

### **CORNER HISTORY:**

June 10, 1943 - Harvey Cartwright found an iron harrow tooth down 2.0 and replaced with a concrete monument. Updated ties.

June 4, 1962 - Found broken off 4" x 6" concrete monument down 0.3'. set 3/4" iron pipe on the North side. Updated ties.

September 21, 1964 - Found broken off 4" x 6" concrete monument and updated ties.

July 14, 1967 - Jim Kurth found broken off 4" x 6" concrete monument down 1.1'.

September 8, 1969 - Set cast iron monument down 0.4'± on top of broken off 4" x 6" concrete monument down 2'±. Updated ties to cast iron monument.

June 7, 1973 - Found cast iron monument and updated ties.

August 10, 1976 - Found cast iron monument and updated ties.

August 1, 1979 - Found cast iron monument and updated ties.

July 14, 1982 - Found cast iron monument and updated ties.

August 6, 1985 - Found cast iron monument and updated ties.

August 11, 1989 - Found cast iron monument and updated ties.

August 11, 1995 - Found cast iron monument and updated ties.

March 19, 2003 - Established NAD 1983 (1996 adj.) Anoka County project coordinates by static GPS methods.

November 14, 2007 - Found cast iron monument and updated ties.

September 12, 2014 - Found cast iron monument and updated ties.

August 9, 2019 - Found cast iron monument and updated ties.

June 6, 2022 - Found cast iron monument down 1.6'±, verified position by VRS GPS method and updated ties.