

CERTIFICATE OF LOCATION OF GOVERNMENT CORNER

County of Anoka

State of Minnesota

Witness Corner of Sec. 19 Township 32 Range 22

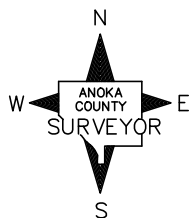
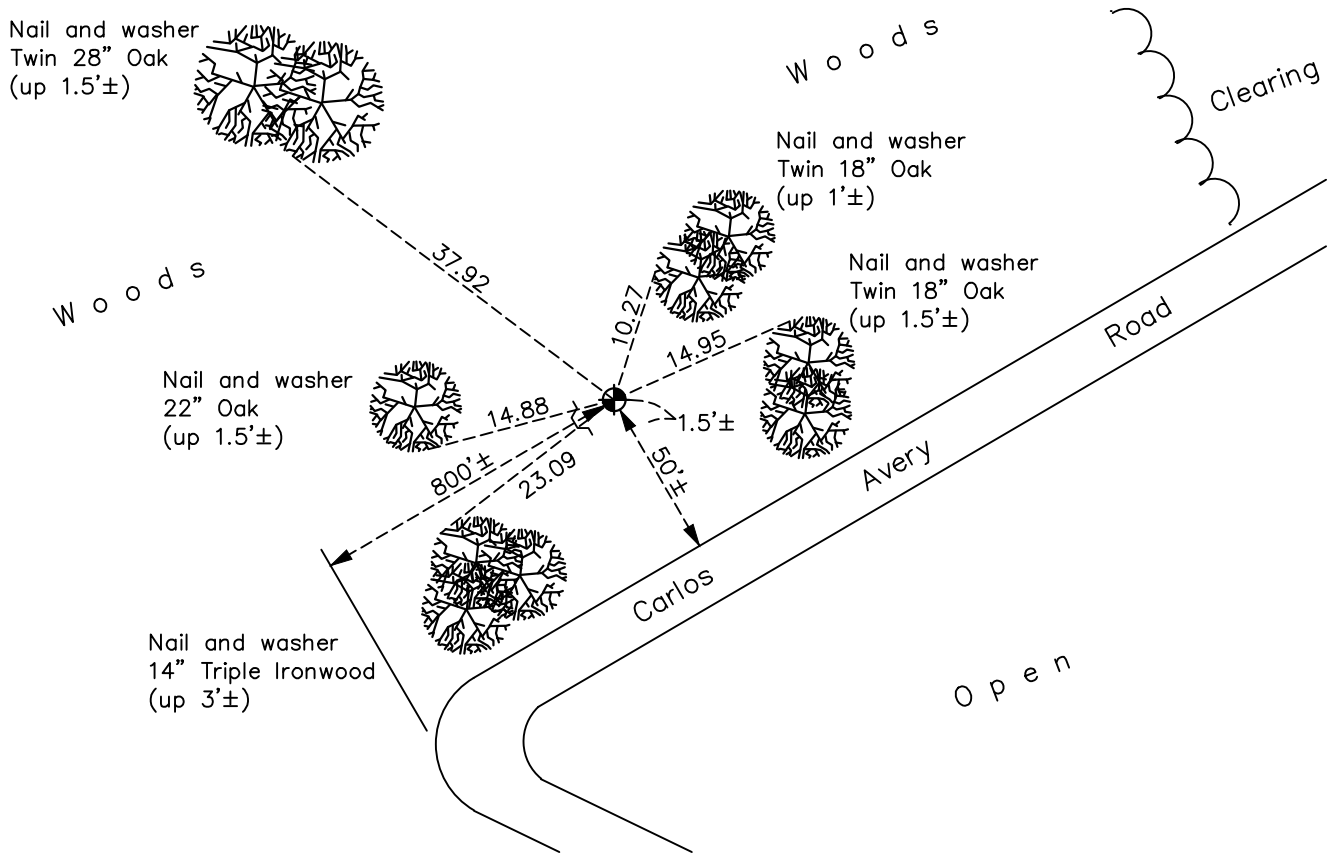
(on north line of NW 1/4)

On the 20th day of September, 1988, the described corner was evidenced by a 3/4" iron rod set by MN DNR

and to perpetuate the location of said corner, at the exact location thereof, a permanent marker was placed consisting of a cast iron monument with a sign and post on the southeast side

AND on the 27th day of January, 2023, said permanent marker was found flush with a sign and post to the Southeast. Coordinates verified using County RTK GPS method.

Updated reference ties are as shown below.



Revision Date
1/30/2023

N.A.D. 1983 Coordinates
(1996 Adjustment)

County Project Coordinates	
Northing	<u>179902.2762</u>
Easting	<u>532767.0135</u>
Date	<u>3/04/02</u>

I hereby certify that this United States public land survey monument record is correct and complete to the best of my knowledge and belief.

David Zieglmeier Date 2/28/23

David Zieglmeier Anoka County Surveyor
Minnesota License Number 46179

HISTORY OF GOVERNMENT CORNER

County of Anoka

State of Minnesota

Witness Corner of Sec. 19 Township 32 Range 22
(on north line of NW 1/4)

CORNER HISTORY:

September 20, 1988 - Found 3/4" iron rod set by MN DNR. Updated ties.

July 12, 1990 - Found 3/4" iron rod and replaced with a cast iron monument. Updated ties.

September 6, 1995 - Found cast iron monument and updated ties.

March 4, 2002 - Found cast iron monument and updated ties. Established NAD 1983 (1996 adj.) Anoka County project coordinates by static GPS methods.

September 24, 2014 - Found cast iron monument and updated ties.

November 18, 2019 - Found cast iron monument and updated ties.

June 22, 2022 - Found cast iron monument, verified position by VRS GPS method and updated ties.

January 27, 2023 - Found cast iron monument flush, position verified by County RTK GPS method and the ties were reviewed.