

# CERTIFICATE OF LOCATION OF GOVERNMENT CORNER

County of Anoka

State of Minnesota

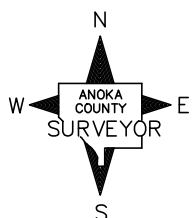
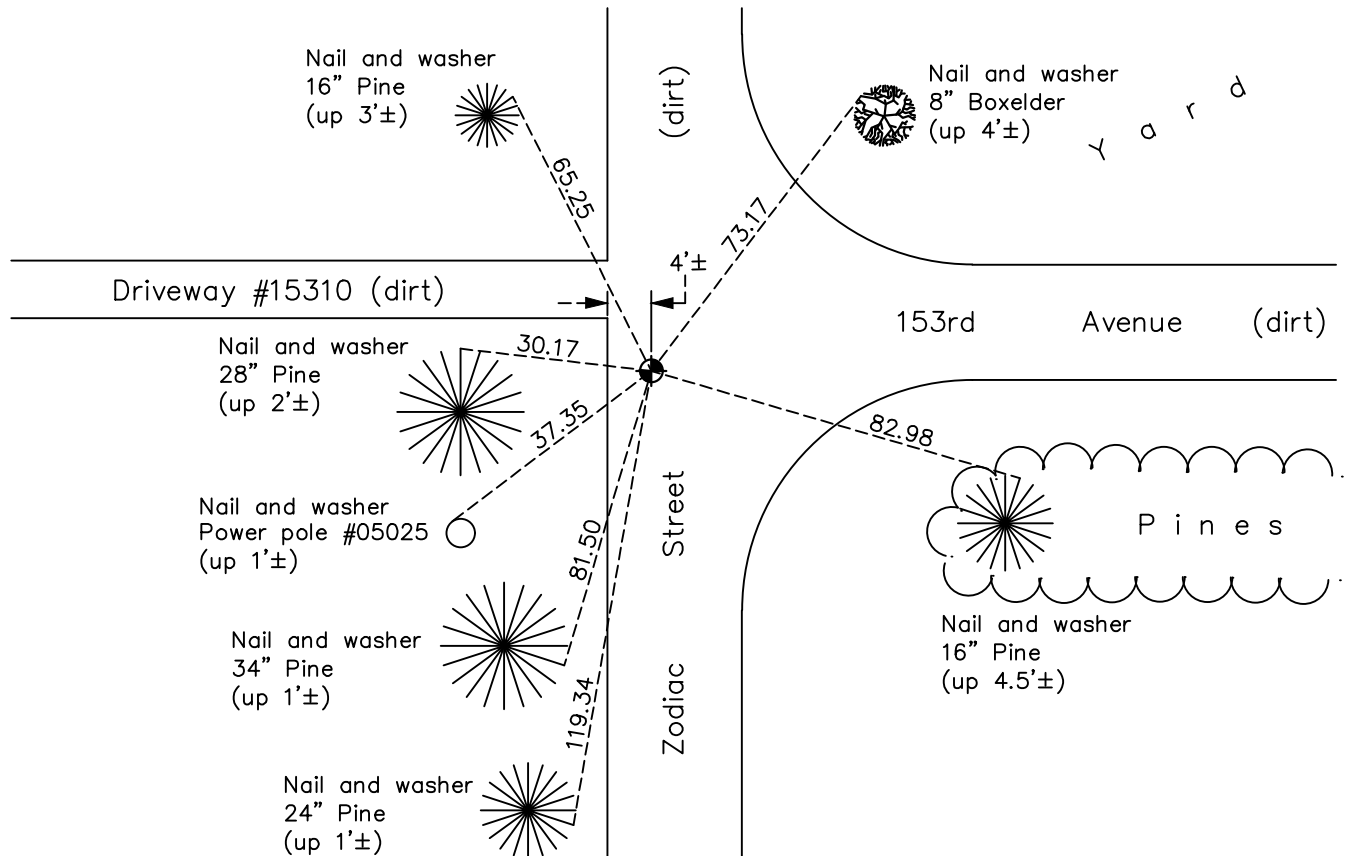
## East 1/4 Corner of Sec. 20 Township 32 Range 22

On the 19th day of July, 1962, the described corner was evidenced by Cartwright reconstruction ties

and to perpetuate the location of said corner, at the exact location thereof, a permanent marker was placed consisting of a cast iron monument

AND on the 6th day of June, 2022, said permanent marker was found down 1.5'± and the ties were updated

Updated reference ties are as shown below.



Revision Date  
 12/02/2022

N.A.D. 1983 Coordinates  
 (1996 Adjustment)

County Project Coordinates	
Northing	<u>177307.2558</u>
Easting	<u>542654.6762</u>
Date	<u>3/19/03</u>

I hereby certify that this United States public land survey monument record is correct and complete to the best of my knowledge and belief.  
David Zieglmeier Date 12/8/23  
 David Zieglmeier Anoka County Surveyor  
 Minnesota License Number 46179

# HISTORY OF GOVERNMENT CORNER

Page No. 78

County of Anoka

State of Minnesota

## East 1/4 Corner of Sec. 20 Township 32 Range 22

### **CORNER HISTORY:**

June 10, 1943 - Harvey Cartwright set a concrete monument in road. Established ties to monument.

July 19, 1962 - Set cast iron monument down 0.5' using reconstruction of Harvey Cartwright ties. Updated ties.

September 21, 1964 - Found cast iron monument and updated ties.

June 30, 1970 - Found cast iron monument down 0.3' and leaning South 0.07'. Straightened and updated ties.

June 7, 1973 - Found cast iron monument and updated ties.

August 10, 1976 - Found cast iron monument and updated ties.

August 2, 1979 - Found cast iron monument and updated ties.

July 14, 1982 - Found cast iron monument and updated ties.

August 6, 1985 - Found cast iron monument and updated ties.

August 21, 1989 - Found cast iron monument and updated ties.

August 11, 1995 - Found cast iron monument and updated ties.

March 19, 2003 - Established NAD 1983 (1996 adj.) Anoka County project coordinates by static GPS methods.

July 12, 2007 - Found cast iron monument down 1.5'± and updated ties.

September 12, 2014 - Found cast iron monument down 1.5'± and updated ties.

August 12, 2019 - Found cast iron monument down 1.5'± and updated ties.

June 6, 2022 - Found cast iron monument down 1.5'±, verified position by VRS GPS method and updated ties.