

# CERTIFICATE OF LOCATION OF GOVERNMENT CORNER

County of Anoka

State of Minnesota

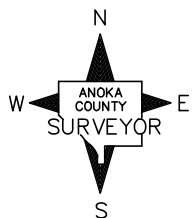
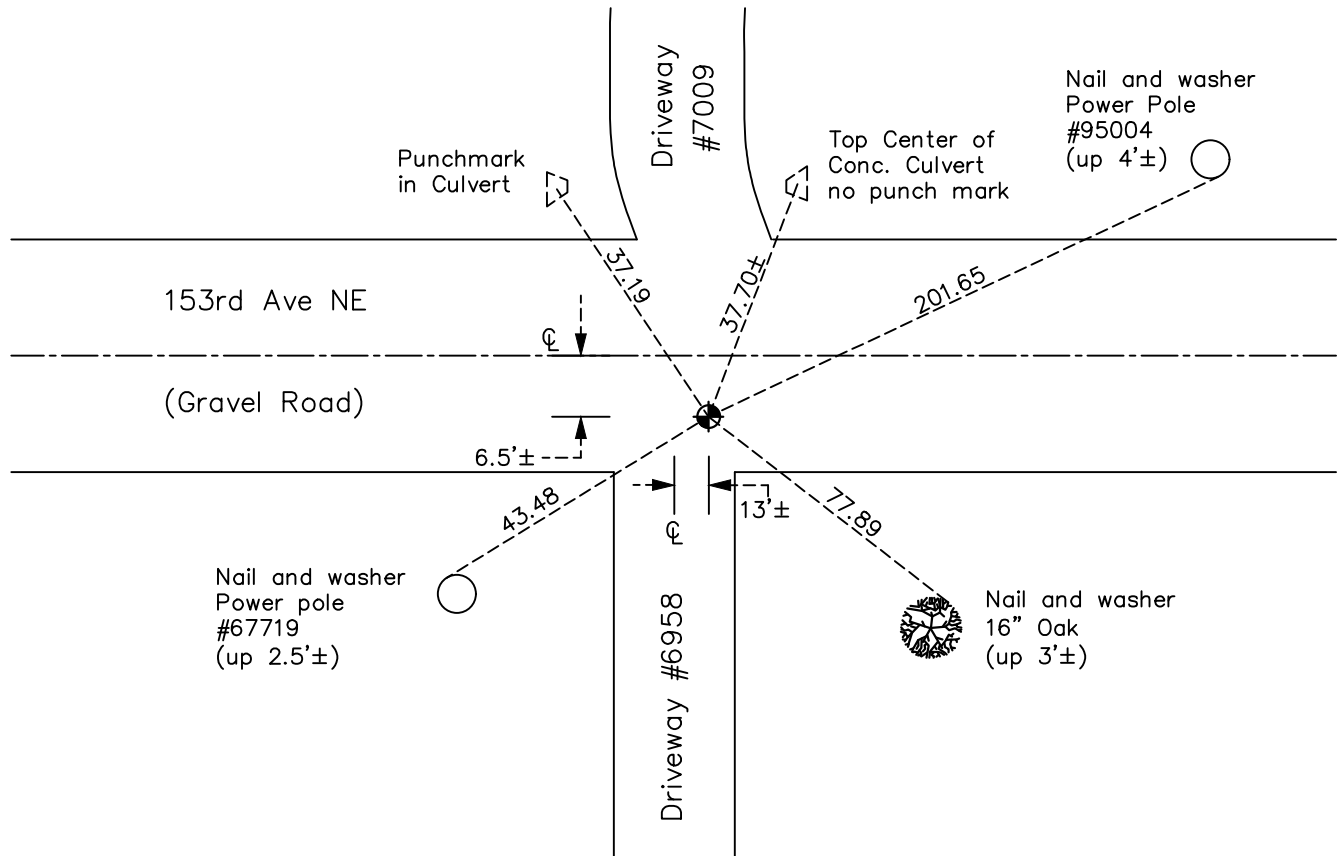
## Center Corner of Sec. 21 Township 32 Range 22

On the unknown day of July, 1967, the described corner was evidenced by an 1/2" Iron Pipe

and to perpetuate the location of said corner, at the exact location thereof, a permanent marker was placed consisting of a 1/2" Iron Pipe

AND on the 30th day of June, 2023, said permanent marker was Removed found 1/2" I.P.  
Replaced w/ 1/2" Iron Pipe w/ cap, down 0.5'±. After setting, established coordinates & updated ties.

Updated reference ties are as shown below.



Revision Date  
10/04/2023

N.A.D. 1983 Coordinates  
 (2011 Adjustment)

County Project Coordinates	
Northing	<u>177315.187</u>
Easting	<u>545290.517</u>
Date	<u>6/30/2023</u>

I hereby certify that this United States public land survey monument record is correct and complete to the best of my knowledge and belief.

*David Zieglsmeier* Date 12/8/23

David M. Zieglsmeier, Anoka County Surveyor  
 Minnesota License Number 46179

# HISTORY OF GOVERNMENT CORNER

County of Anoka

State of Minnesota

Center Corner of Sec. 21 Township 32 Range 22

## **CORNER HISTORY:**

July 1967 - 1/2" Iron Pipe set down 0.3'±

August 23, 1968 - Found 1/2" Iron Pipe down 0.3'± and updated ties

June 7, 1973 - Found 1/2" Iron Pipe down 0.3'± and updated ties

October 10, 1976 - Found 1/2" Iron Pipe down 0.3'± and updated ties

November 7, 1979 - Found 1/2" Iron Pipe down 0.3'± and updated ties

June 6, 2022 - Found 1/2" Iron Pipe laying over, down 1.0'±, checking position using VRS GPS method and ties

June 30th, 2023 - Removed found 1/2" Iron Pipe down 1.0'± and laying down. Replaced with 1/2" Iron Pipe with ACS cap, set down 0.5'±. After setting, established Anoka County Coordinates with ACS RTK GPS method and updated ties.