

CERTIFICATE OF LOCATION OF GOVERNMENT CORNER

County of Anoka

State of Minnesota

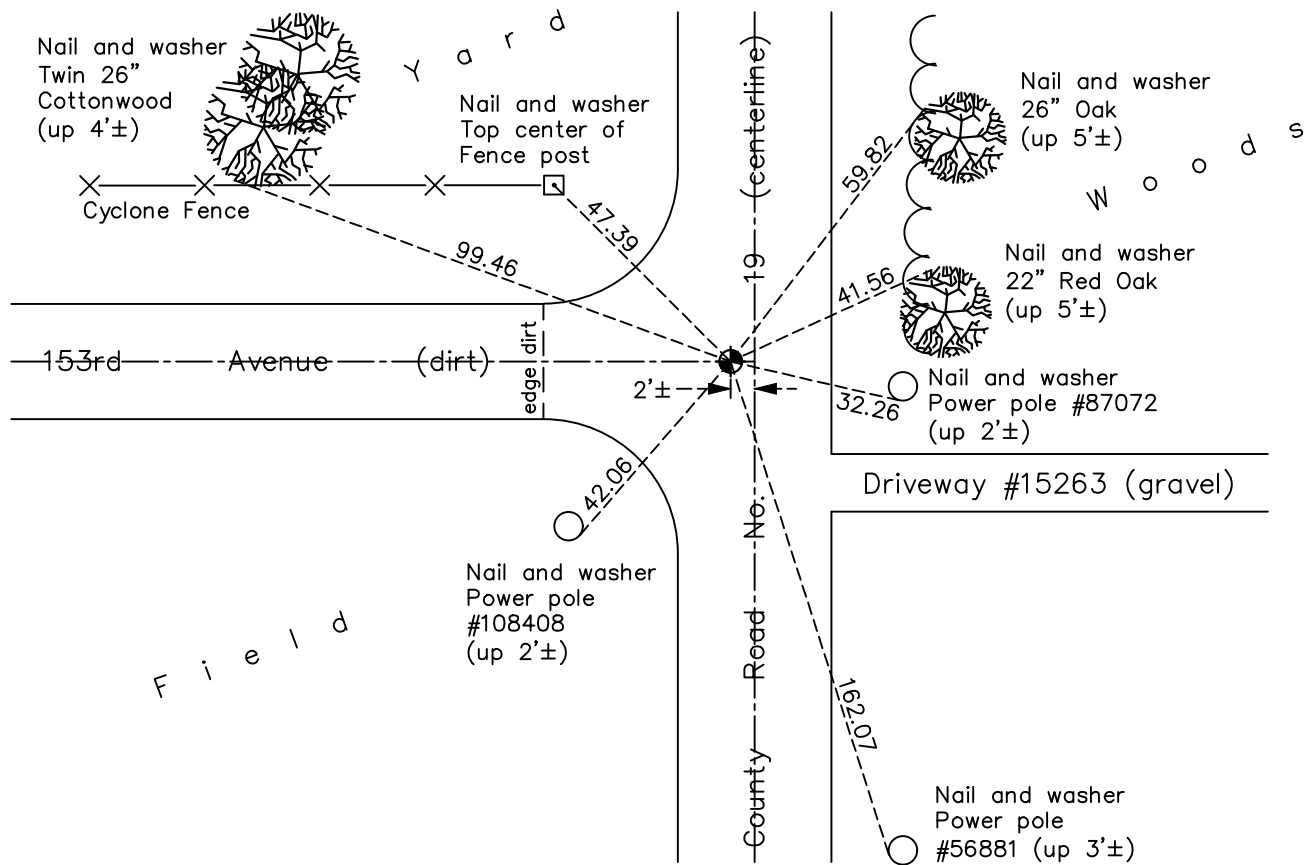
East 1/4 Corner of Sec. 21 Township 32 Range 22

On the 14th day of July, 1967, the described corner was evidenced by a 1/2" iron pipe

and to perpetuate the location of said corner, at the exact location thereof, a permanent marker was placed consisting of a cast iron monument

AND on the 7th day of June, 2022, said permanent marker was found flush and the ties were updated

Updated reference ties are as shown below.



Revision Date
 12/02/2022

N.A.D. 1983 Coordinates
 (1996 Adjustment)

County Project Coordinates	
Northing	<u>177322.7981</u>
Easting	<u>547908.6110</u>
Date	<u>6/17/03</u>

I hereby certify that this United States public land survey monument record is correct and complete to the best of my knowledge and belief.
David Zieglmeier Date 12/8/23
 David Zieglmeier Anoka County Surveyor
 Minnesota License Number 46179

HISTORY OF GOVERNMENT CORNER

Page No. 80

County of Anoka

State of Minnesota

East 1/4 Corner of Sec. 21 Township 32 Range 22

CORNER HISTORY:

July 14, 1967 - Jim Kurth found a 1/2" iron pipe and updated ties.

August 23, 1968 - Found 1/2" iron pipe flush and replaced with a cast iron monument flush. Updated ties.

June 7, 1973 - Found cast iron monument and updated ties.

August 5, 1976 - Found cast iron monument and updated ties.

August 2, 1979 - Found cast iron monument and updated ties.

August 2, 1985 - Found cast iron monument and updated ties.

August 10, 1989 - Found cast iron monument and updated ties.

August 14, 1995 - Found cast iron monument and updated ties.

June 13, 1997 - Found cast iron monument, set construction ties and updated corner ties prior to road construction.

August 26, 1997 - Set cast iron monument after road construction. Updated ties.

June 16, 2003 - Found cast iron monument and updated ties.

June 17, 2003 - Established NAD 1983 (1996 adj.) Anoka County project coordinates by static GPS methods.

November 12, 2007 - Found cast iron monument and updated ties.

October 14, 2014 - Found cast iron monument and updated ties.

August 9, 2019 - Found cast iron monument. Verified position by VRS GPS methods. Updated ties.

June 7, 2022 - Found cast iron monument flush. Verified position by VRS GPS methods. Updated ties.