

CERTIFICATE OF LOCATION OF GOVERNMENT CORNER

County of Anoka

State of Minnesota

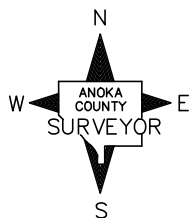
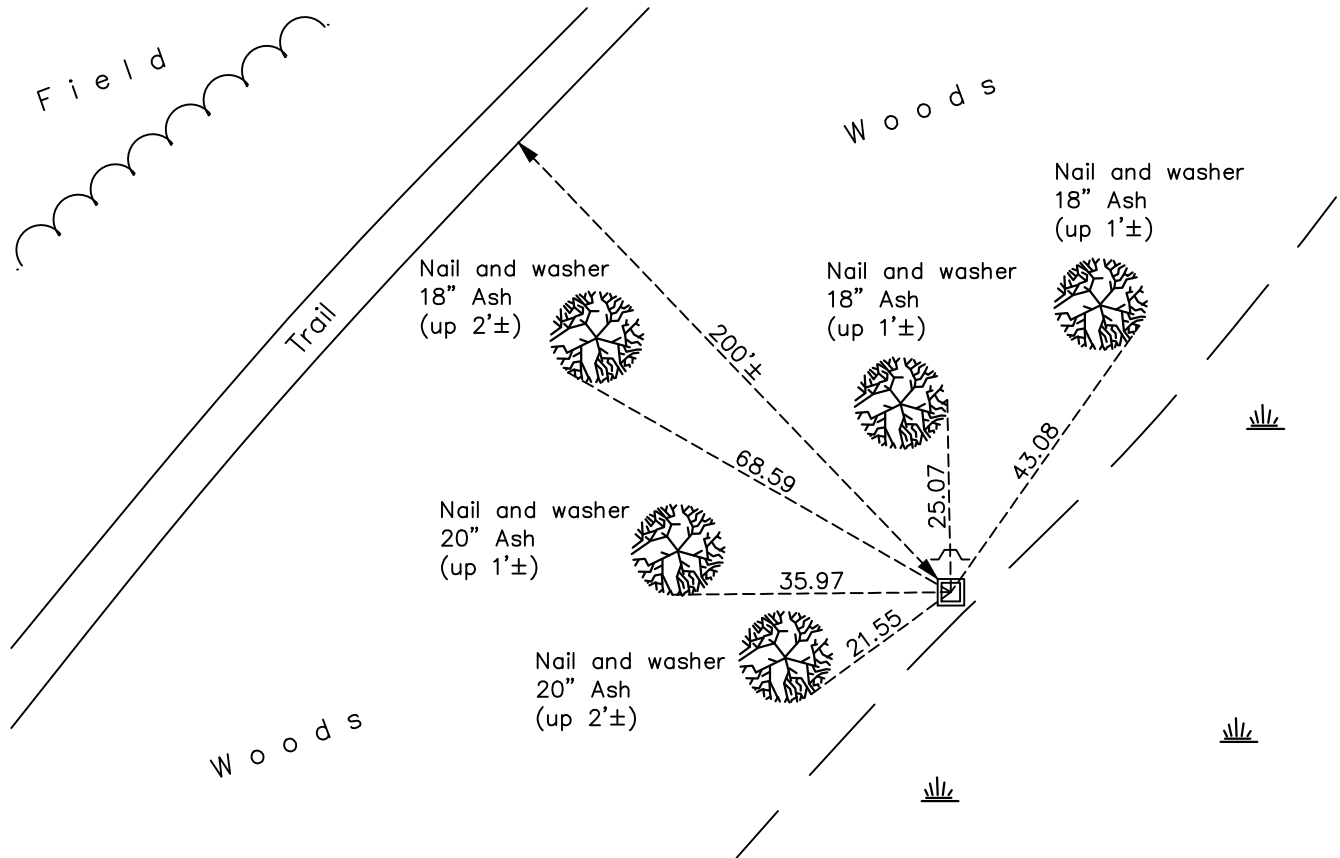
Witness Corner of Sec. 22 Township 32 Range 22
(on east line of NE 1/4)

On the 25th day of February, 1983, the described corner was evidenced by area resurvey

and to perpetuate the location of said corner, at the exact location thereof, a permanent marker was placed consisting of a 2" square steel Telespar monument with 'County Surveyor' cap and a sign and post on the north side

AND on the 22nd day of June, 2022, said permanent marker was found up 1.2'± and the ties were updated

Updated reference ties are as shown below.



Revision Date
 12/06/2022

N.A.D. 1983 Coordinates
 (1996 Adjustment)

County Project Coordinates	
Northing	178539.9413
Easting	553228.3416
Date	2/14/06

I hereby certify that this United States public land survey monument record is correct and complete to the best of my knowledge and belief.
David Zieglmeier Date 12/8/23
 David Zieglmeier Anoka County Surveyor
 Minnesota License Number 46179

HISTORY OF GOVERNMENT CORNER

Page No. 81

County of Anoka

State of Minnesota

Witness Corner of Sec. 22 Township 32 Range 22
(on east line of NE 1/4)

CORNER HISTORY:

February 25, 1983 - Set 1/2" iron pipe using area resurvey. Set sign and post on Northwest side. Established ties to iron pipe.

June 18, 1990 - Found 1/2" iron pipe and updated ties.

April 30, 1993 - Found 1/2" iron pipe and replaced with a cast iron monument. Sign and post on Northwest side. Updated ties.

August 18, 1995 - Found cast iron monument and updated ties.

February 14, 2006 - Established NAD 1983 (1996 adj.) Anoka County project coordinates by static GPS methods.

October 14, 2014 - Found 2" x 2" steel Telspar monument w/cap and sign and post on the North side. Updated ties.

November 18, 2019 - Found 2" x 2" steel Telspar monument. Verified position by VRS GPS methods. Updated ties.

June 22, 2022 - Found 2" x 2" steel Telspar monument up 1.2'±, Verified position by VRS GPS method
Updated ties.