

CERTIFICATE OF LOCATION OF GOVERNMENT CORNER

County of Anoka

State of Minnesota

Witness Corner of Sec. 22 Township 32 Range 22

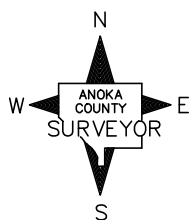
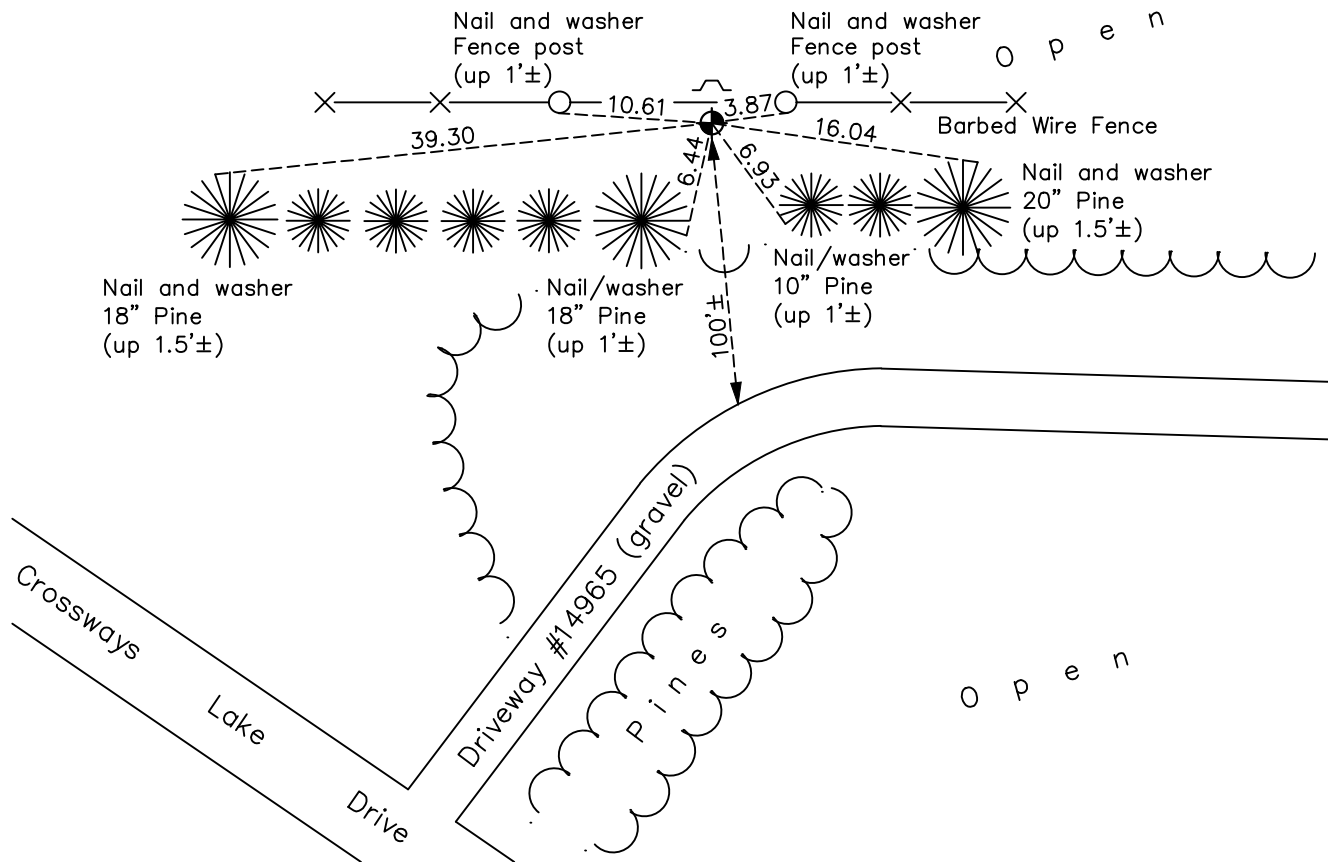
(on east line of SE 1/4)

On the 28th day of February, 1983, the described corner was evidenced by area resurvey

and to perpetuate the location of said corner, at the exact location thereof, a permanent marker was placed consisting of a cast iron monument with a sign and post on the north side

AND on the 2nd day of June, 2022, said permanent marker was found flush and the ties were updated

Updated reference ties are as shown below.



Revision Date
 12/06/2022

N.A.D. 1983 Coordinates
 (1996 Adjustment)

County Project Coordinates	
Northing	176047.6514
Easting	553207.0782
Date	1/26/06

I hereby certify that this United States public land survey monument record is correct and complete to the best of my knowledge and belief.

David Zieglmeier Date 12/8/23

David Zieglmeier Anoka County Surveyor
 Minnesota License Number 46179

HISTORY OF GOVERNMENT CORNER

Page No. 82

County of Anoka

State of Minnesota

Witness Corner of Sec. 22 Township 32 Range 22
(on east line of SE 1/4)

CORNER HISTORY:

February 28, 1983 - Set 1/2" iron pipe using area resurvey. Set sign and post on the North side. Established ties to iron pipe.

June 12, 1990 - Found 1/2" iron pipe and updated ties.

April 30, 1993 - Found 1/2" iron pipe and replaced with a cast iron monument. Updated ties.

August 18, 1995 - Found cast iron monument and updated ties.

January 26, 2006 - Established NAD 1983 (1996 adj.) Anoka County project coordinates by static GPS methods.

March 6, 2008 - Found cast iron monument and updated ties.

September 23, 2014 - Found cast iron monument and updated ties.

August 12, 2019 - Found cast iron monument and updated ties.

June 2, 2022 - Found cast iron monument, verified position by VRS GPS method and updated ties.