

# CERTIFICATE OF LOCATION OF GOVERNMENT CORNER

County of Anoka

State of Minnesota

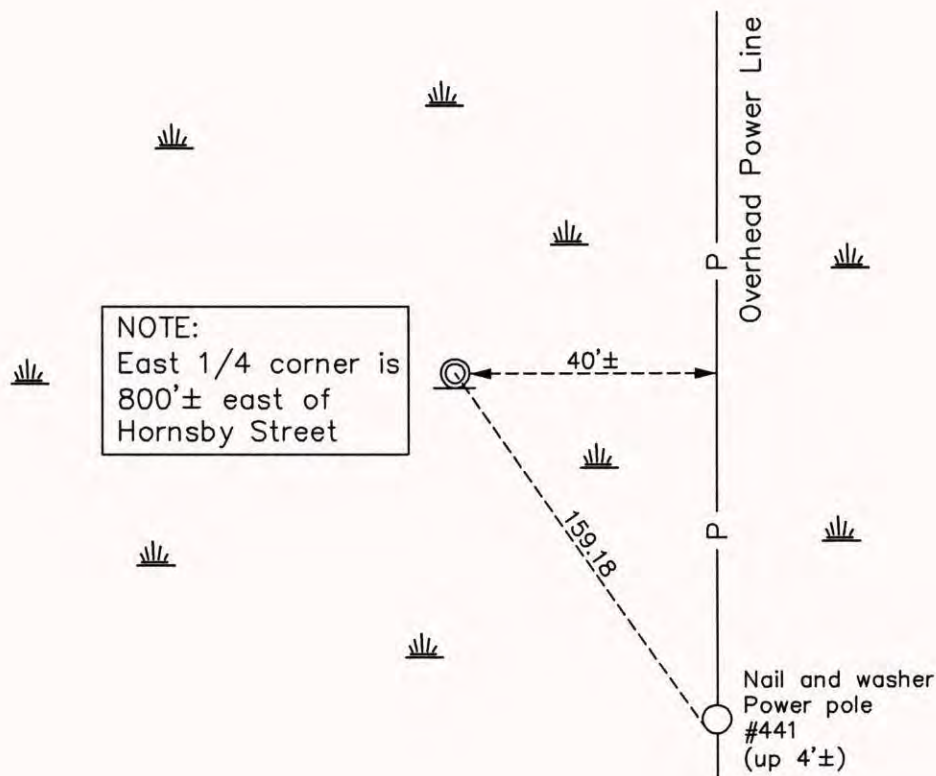
## East 1/4 Corner of Sec. 24 Township 32 Range 22

On the \_\_\_\_ day of July, 1967, the described corner was evidenced by a 3/4" iron pipe

and to perpetuate the location of said corner, at the exact location thereof, a permanent marker was placed consisting of a red and white iron pipe

AND on the 3rd day of March, 2015, said permanent marker was found to be a red and white 2" iron pipe up 3'± with a sign attached facing south and the ties were updated

Updated reference ties are as shown below.



Revision Date  
6/30/15

N.A.D. 1983 Coordinates  
(1996 Adjustment)

County Project Coordinates	
Northing	177273.2691
Easting	563696.6851
Date	1/17/06

I hereby certify that this United States public land survey monument record is correct and complete to the best of my knowledge and belief.

*Larry D. Hoium* Date 6/30/15

Larry D. Hoium, Anoka County Surveyor  
Minnesota License Number 18165