

# CERTIFICATE OF LOCATION OF GOVERNMENT CORNER

County of Anoka

State of Minnesota

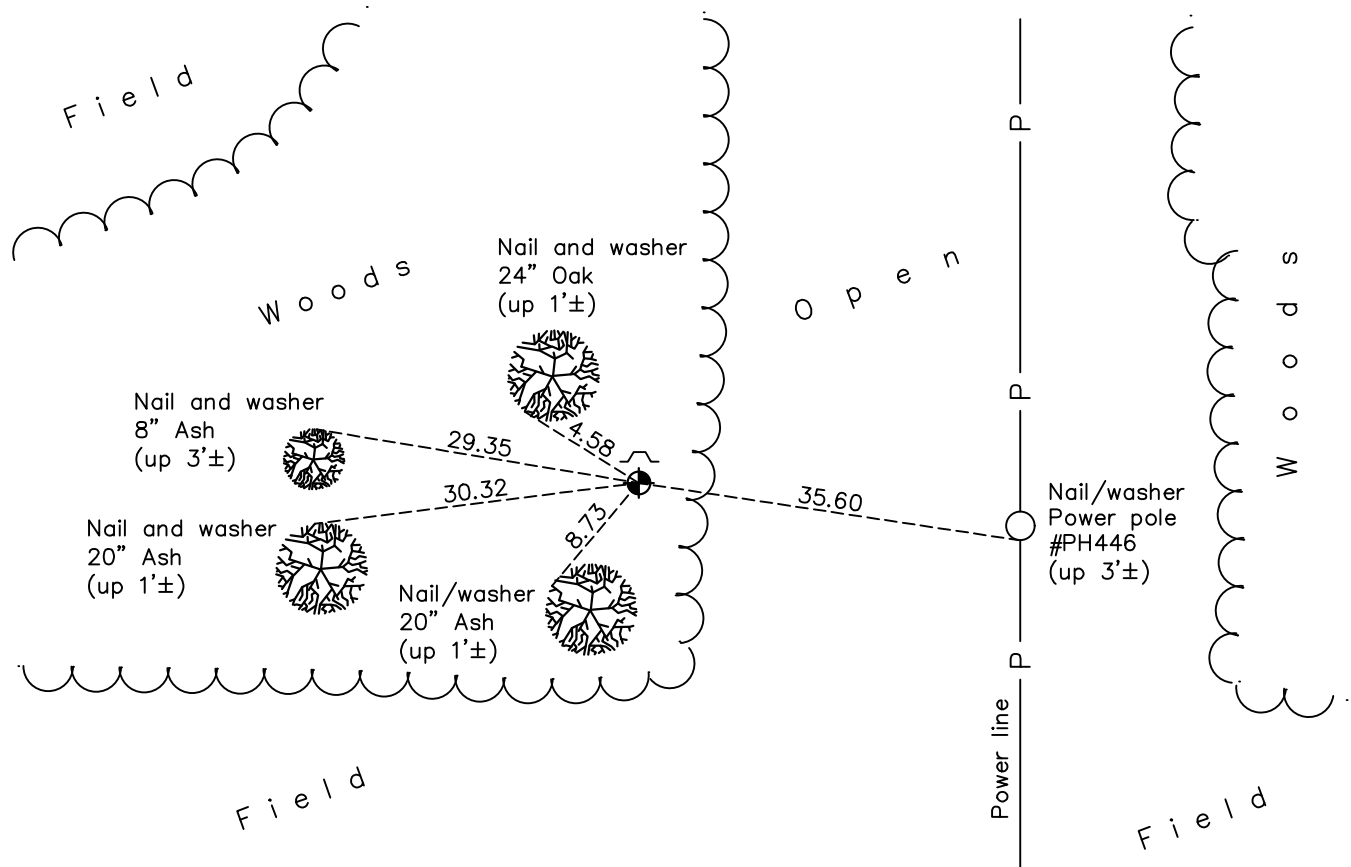
## Southeast Corner of Sec. 24 Township 32 Range 22

On the 7th day of March, 1983, the described corner was evidenced by two remaining ties and area resurvey

and to perpetuate the location of said corner, at the exact location thereof, a permanent marker was placed consisting of a cast iron monument

AND on the 6th day of March, 2023, said permanent marker was found flush with a sign and post 1' North of monument and Coordinates verified using County RTK GPS method.

Updated reference ties are as shown below.



Revision Date  
3/27/2023

N.A.D. 1983 Coordinates  
 (1996 Adjustment)

County Project Coordinates	
Northing	<u>174627.4220</u>
Easting	<u>563736.5460</u>
Date	<u>1/23/06</u>

I hereby certify that this United States public land survey monument record is correct and complete to the best of my knowledge and belief.  
*David Zieglmeier* Date 12/8/23  
 David Zieglmeier Anoka County Surveyor  
 Minnesota License Number 46179

# HISTORY OF GOVERNMENT CORNER

Page No. 85

County of Anoka

State of Minnesota

## Southeast Corner of Sec. 24 Township 32 Range 22

### **CORNER HISTORY:**

July 1967 - Leroy Winner found a 1/2" iron pipe and updated ties.

June 13, 1973 - Found 1/2" iron pipe and updated ties.

August 10, 1976 - Found 1/2" iron pipe and updated ties.

August 6, 1979 - Found 1/2" iron pipe and updated ties.

March 7, 1983 - Found 1/2" iron pipe gone. Set cast iron monument using two remaining ties and area resurvey. Set sign and post on the North side. Updated ties.

June 14, 1990 - Found cast iron monument and updated ties.

August 22, 1995 - Found cast iron monument and updated ties.

January 23, 2006 - Found cast iron monument. Updated ties. Established NAD 1983 (1996 adj.) Anoka County project coordinates by static GPS methods.

December 23, 2014 - Found cast iron monument. Verified position by VRS GPS methods. Updated ties.

August 21, 2019 - Found cast iron monument flush and updated ties.

June 1, 2022 - Found cast iron monument flush, verified position by VRS GPS method and updated ties.

March 6, 2023 - Found cast iron monument flush, position verified correct by County RTK GPS method and the ties were reviewed.