

CERTIFICATE OF LOCATION OF GOVERNMENT CORNER

County of Anoka

State of Minnesota

Witness Corner of Sec. 23 Township 32 Range 22

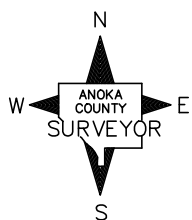
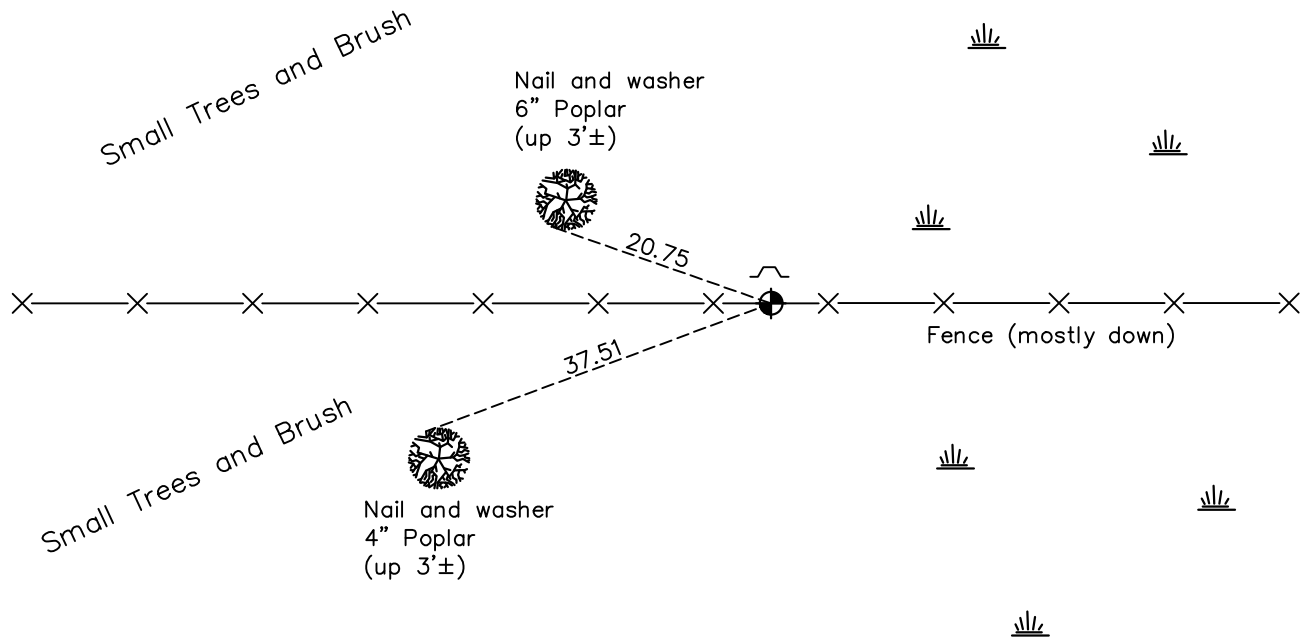
(on south line of section)

On the 28th day of February, 1983, the described corner was evidenced by area resurvey

and to perpetuate the location of said corner, at the exact location thereof, a permanent marker was placed consisting of a cast iron monument with a sign and post on the north side

AND on the 23rd day of June, 2022, said permanent marker was found flush and the ties were updated

Updated reference ties are as shown below.



Revision Date
 12/06/2022

N.A.D. 1983 Coordinates
 (1996 Adjustment)

County Project Coordinates	
Northing	<u>174710.7680</u>
Easting	<u>554156.0574</u>
Date	<u>1/26/06</u>

I hereby certify that this United States public land survey monument record is correct and complete to the best of my knowledge and belief.
David Zieglmeier Date 12/8/23
 David Zieglmeier Anoka County Surveyor
 Minnesota License Number 46179

HISTORY OF GOVERNMENT CORNER

Page No. 88

County of Anoka

State of Minnesota

Witness Corner of Sec. 23 Township 32 Range 22
(on south line of section)

CORNER HISTORY:

February 28, 1983 - Set 1/2" iron pipe using area resurvey. Set sign and post on the North side. No corner ties.

January 14, 1992 - Found 1/2" iron pipe and replaced with a cast iron monument flush. No corner ties.

August 18, 1995 - Found cast iron monument. No corner ties.

January 26, 2006 - Established NAD 1983 (1996 adj.) Anoka County project coordinates by static GPS methods.

January 17, 2007 - Found cast iron monument. No corner ties.

September 24, 2014 - Found cast iron monument. Verified position by VRS GPS methods. No corner ties.

August 21, 2019 - Found cast iron monument. Verified position by VRS GPS methods. Updated ties.

June 23, 2022 - Found cast iron monument flush. Verified position by VRS GPS methods. Updated ties.