

CERTIFICATE OF LOCATION OF GOVERNMENT CORNER

County of Anoka

State of Minnesota

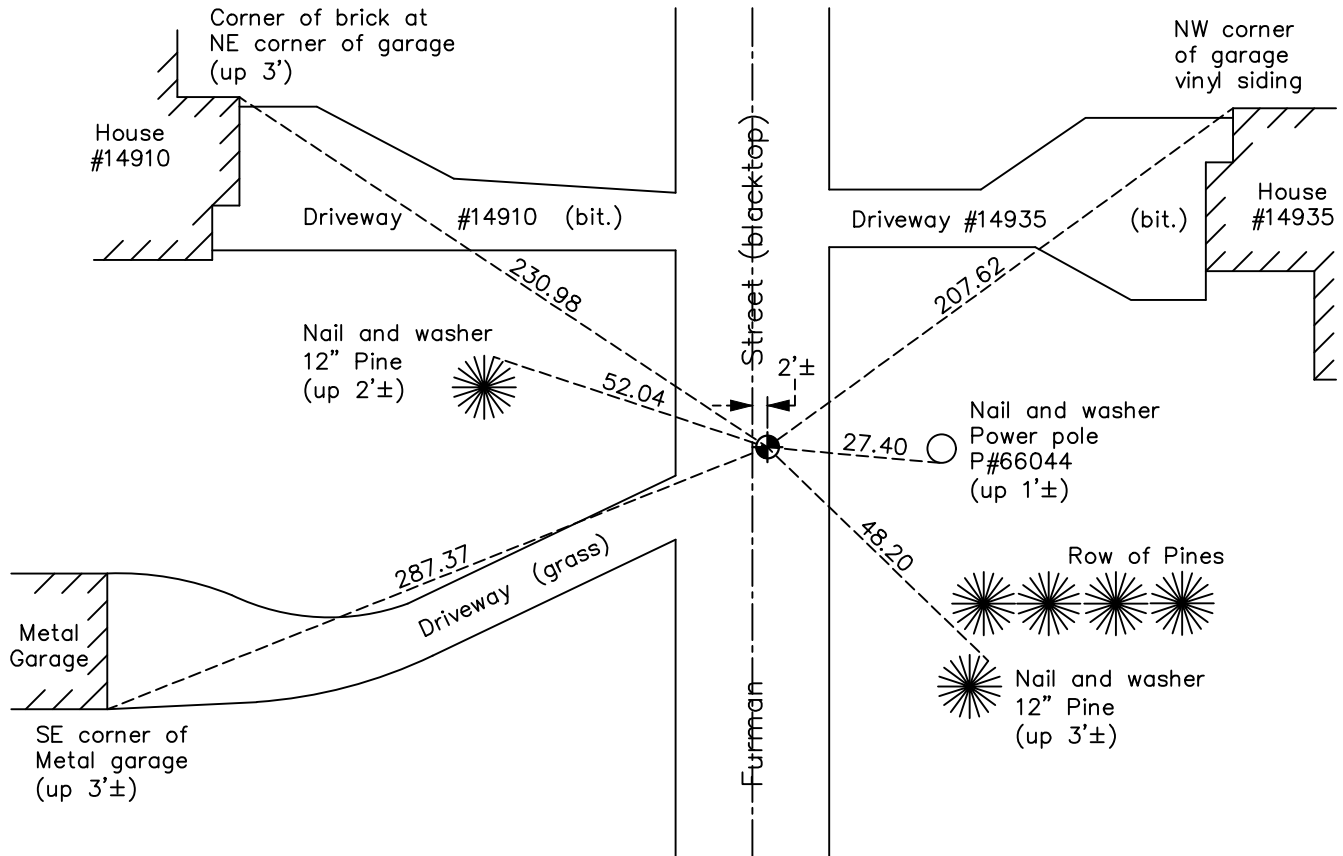
Southeast Corner of Sec. 22 Township 32 Range 22

On the 6th day of December, 1963, the described corner was evidenced by a 1" axle shaft

and to perpetuate the location of said corner, at the exact location thereof, a permanent marker was placed consisting of a cast iron monument

AND on the 2nd day of June, 2022, said permanent marker was found flush with the surface and the ties were updated.

Updated reference ties are as shown below.



Revision Date
 12/06/2022

N.A.D. 1983 Coordinates
 (1996 Adjustment)

County Project Coordinates	
Northing	174727.6212
Easting	553196.0997
Date	6/25/03

I hereby certify that this United States public land survey monument record is correct and complete to the best of my knowledge and belief.

David Zieglmeier Date 12/8/23

David Zieglmeier Anoka County Surveyor
 Minnesota License Number 46179

HISTORY OF GOVERNMENT CORNER

Page No. 89

County of Anoka

State of Minnesota

Southeast Corner of Sec. 22 Township 32 Range 22

CORNER HISTORY:

December 6, 1963 - Found 1" iron bar down 1' using Don Hult ties. Updated ties.

September 22, 1969 - Found 1" axle shaft and replaced with a cast iron monument down 0.5'±. Updated ties.

June 8, 1973 - Found cast iron monument and updated ties.

August 2, 1979 - Found cast iron monument and updated ties.

August 24, 1989 - Found cast iron monument and updated ties.

August 18, 1995 - Found cast iron monument and updated ties.

June 25, 2003 - Established NAD 1983 (1996 adj.) Anoka County project coordinates by static GPS methods.

September 17, 2014 - Found cast iron monument down 1'±. Checked position by VRS GPS methods. Updated ties. Monument needs to be raised flush with blacktop road.

October 13, 2014 - Found cast iron monument and verified position by static GPS methods.

October 27, 2014 - Raised cast iron monument flush. Verified position by VRS GPS methods. Updated ties.

August 12, 2019 - Found cast iron monument flush. Verified position by VRS GPS methods. Updated ties.

June 2, 2022 - Found cast iron monument flush. Verified position by VRS GPS methods. Updated ties.