

CERTIFICATE OF LOCATION OF GOVERNMENT CORNER

County of Anoka

State of Minnesota

Witness Corner of Sec. 22 Township 32 Range 22

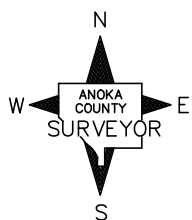
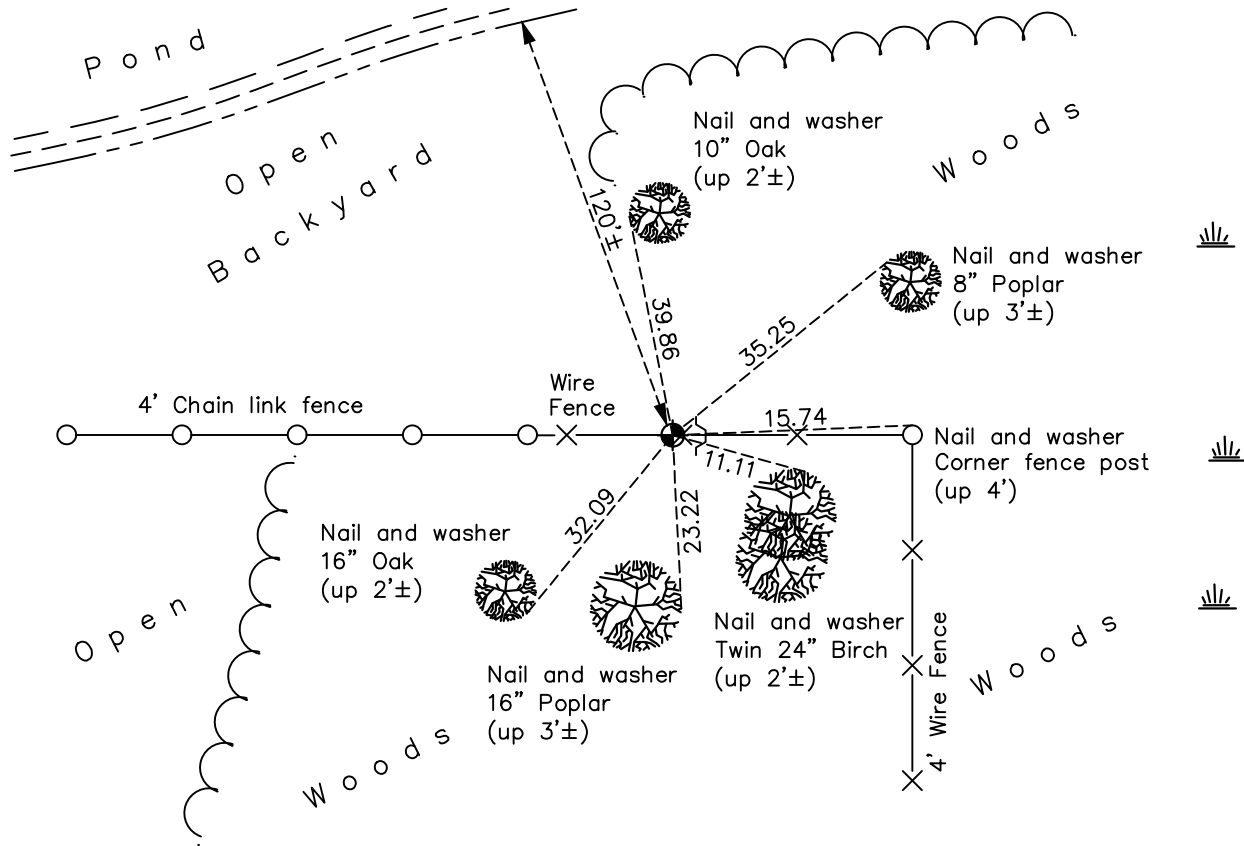
(on south line of SW 1/4)

On the 1st day of March, 1983, the described corner was evidenced by area resurvey

and to perpetuate the location of said corner, at the exact location thereof, a permanent marker was placed consisting of a cast iron monument with a sign and post on the east side

AND on the 23rd day of June, 2022, said permanent marker was found down 0.5'± and the ties were updated

Updated reference ties are as shown below.



Revision Date
12/06/2022

N.A.D. 1983 Coordinates
 (1996 Adjustment)

County Project Coordinates	
Northing	<u>174681.4231</u>
Easting	<u>549230.9707</u>
Date	<u>2/08/06</u>

I hereby certify that this United States public land survey monument record is correct and complete to the best of my knowledge and belief.
David Zieglmeier Date 12/8/23
 David Zieglmeier Anoka County Surveyor
 Minnesota License Number 46179

HISTORY OF GOVERNMENT CORNER

County of Anoka

State of Minnesota

Witness Corner of Sec. 22 Township 32 Range 22
(on south line of SW 1/4)

CORNER HISTORY:

Date:

March 1, 1983 - Set 1/2" Iron Pipe with Sign & Post on East side from area resurvey. Established ties.

June 26, 1990 - Found 1/2" Iron Pipe and updated ties

December 28, 1992 - Found cast iron monument and updated ties

August 18, 1995 - Found cast iron monument and updated ties

February 8, 2006 - Found cast iron monument down 0.5'± and updated ties

October 15, 2014 - Found cast iron monument down 0.5'± and updated ties

June 23, 2022 - Found cast iron monument down 0.5'±, verified position by VRS GPS method and updated ties