

# CERTIFICATE OF LOCATION OF GOVERNMENT CORNER

County of Anoka

State of Minnesota

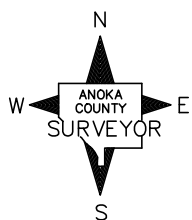
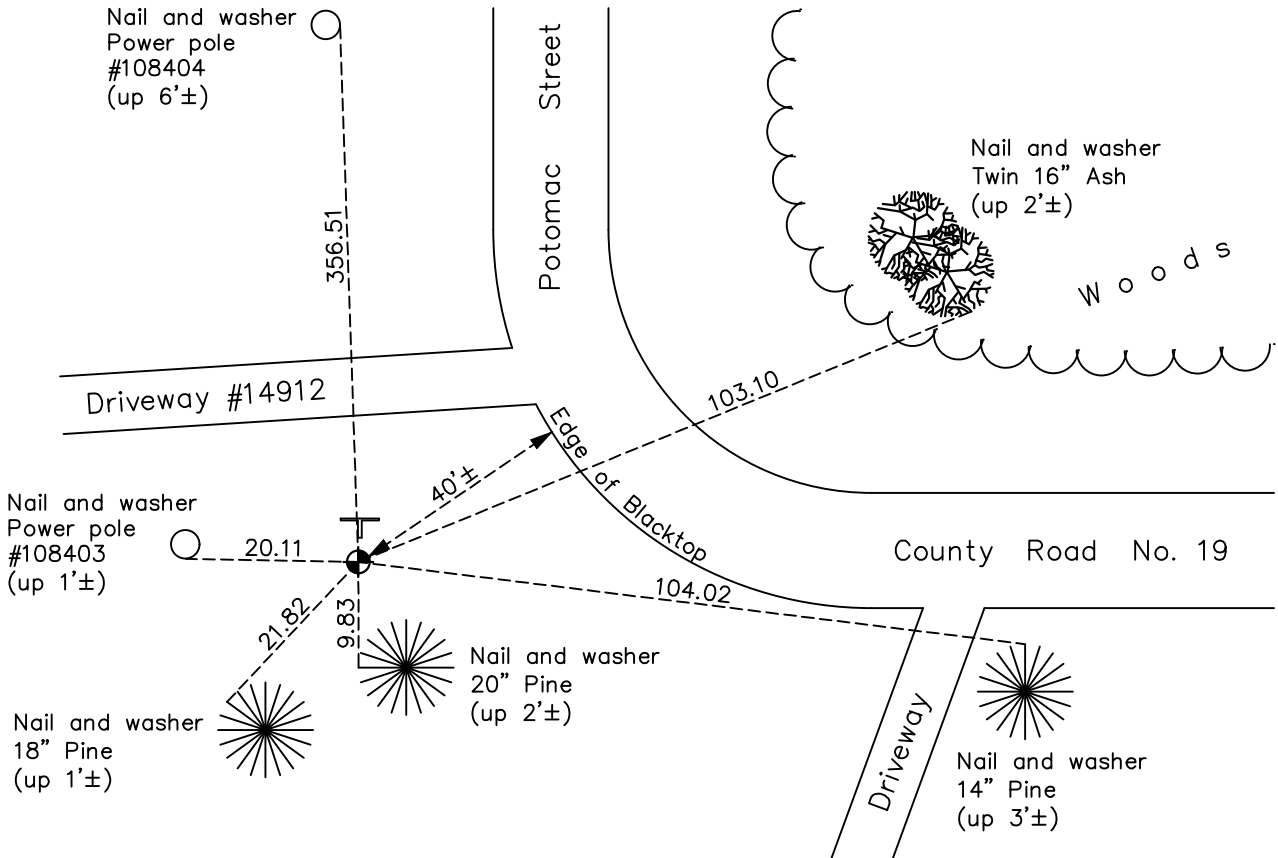
## Southwest Corner of Sec. 22 Township 32 Range 22

On the 6th day of December, 1963, the described corner was evidenced by a well point

and to perpetuate the location of said corner, at the exact location thereof, a permanent marker was placed consisting of a cast iron monument with a steel "T" post 0.5'± north of CIM

AND on the 2nd day of June, 2022, said permanent marker was found flush and the ties were updated

Updated reference ties are as shown below.



Revision Date  
12/06/2022

N.A.D. 1983 Coordinates  
(1996 Adjustment)

County Project Coordinates	
Northing	<u>174666.2309</u>
Easting	<u>547936.2411</u>
Date	<u>6/16/03</u>

I hereby certify that this United States public land survey monument record is correct and complete to the best of my knowledge and belief.

*David Zieglmeier* Date 12/8/23

David Zieglmeier Anoka County Surveyor  
Minnesota License Number 46179

# HISTORY OF GOVERNMENT CORNER

Page No. 91

County of Anoka

State of Minnesota

## Southwest Corner of Sec. 22 Township 32 Range 22

### **CORNER HISTORY:**

December 6, 1963 - Found 1-1/4" well point flush with ground using Don Hult ties. Updated ties.

September 8, 1969 - Found well point and replaced with a cast iron monument up 0.1'±. Updated ties.

June 7, 1973 - Found cast iron monument and updated ties.

August 5, 1976 - Found cast iron monument and updated ties.

August 2, 1979 - Found cast iron monument and updated ties.

August 2, 1985 - Found cast iron monument and updated ties.

December 28, 1992 - Found cast iron monument w/steel post on North side. Updated ties.

August 14, 1995 - Found cast iron monument and updated ties.

June 16, 2003 - Found cast iron monument. Updated ties. Established NAD 1983 (1996 adj.) Anoka County project coordinates by static GPS methods.

September 23, 2014 - Found cast iron monument and updated ties.

August 9, 2019 - Found cast iron monument and updated ties.

June 2, 2022 - Found cast iron monument, verified position by VRS GPS method and updated ties.