

CERTIFICATE OF LOCATION OF GOVERNMENT CORNER

County of Anoka

State of Minnesota

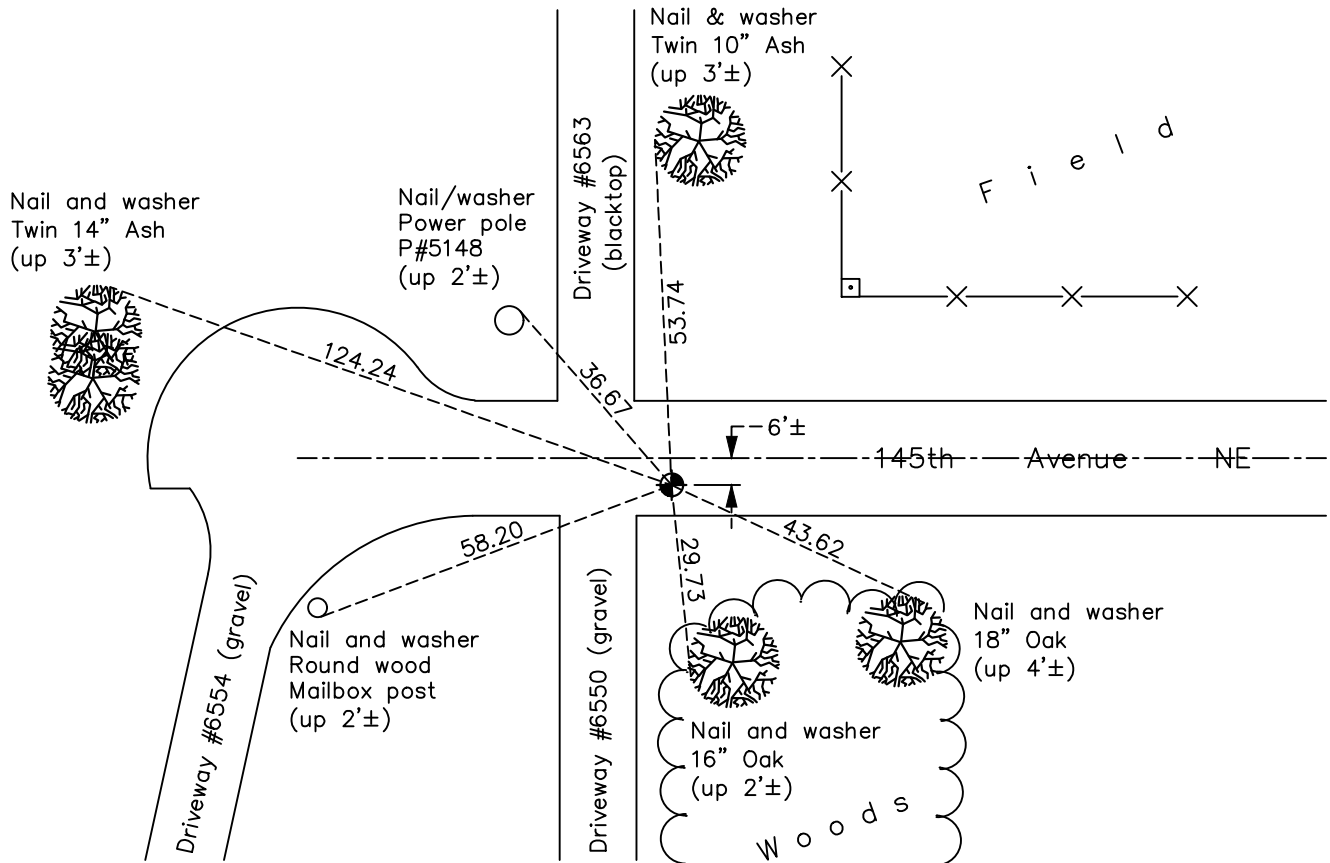
East 1/4 Corner of Sec. 29 Township 32 Range 22

On the 18th day of September, 1964, the described corner was evidenced by a broken off
concrete monument

and to perpetuate the location of said corner, at the exact location thereof, a permanent marker
was placed consisting of a cast iron monument

AND on the 1st day of June, 2022, said permanent marker was found flush and
the ties were updated.

Updated reference ties are as shown below.



Revision Date
12/06/2022

N.A.D. 1983 Coordinates
(1996 Adjustment)

County Project Coordinates	
Northing	<u>172025.9123</u>
Easting	<u>542668.6580</u>
Date	<u>6/24/03</u>

I hereby certify that this United States public land survey monument record is correct and complete to the best of my knowledge and belief.

David Zieglmeier Date 12/8/23

David Zieglmeier Anoka County Surveyor
Minnesota License Number 46179

HISTORY OF GOVERNMENT CORNER

Page No. 98

County of Anoka

State of Minnesota

East 1/4 Corner of Sec. 29 Township 32 Range 22

CORNER HISTORY:

September 18, 1964 - Found 4" x 5" concrete monument with the top broken off down 0.5'±. Set 1/2" iron pipe on the North face of the monument. Updated ties.

June 29, 1970 - Found concrete monument and updated ties.

June 12, 1973 - Found concrete monument and updated ties.

August 11, 1976 - Found concrete monument and updated ties.

August 2, 1979 - Found concrete monument and updated ties.

August 5, 1985 - Found concrete monument and updated ties.

August 25, 1989 - Found cast iron monument and updated ties.

August 24, 1995 - Reset cast iron monument down 1.5'± and updated ties.

June 24, 2003 - Established NAD 1983 (1996 adj.) Anoka County project coordinates by static GPS methods.

September 16, 2014 - Found cast iron monument down 1'± under blacktop road in need of raising. Verified position by VRS GPS methods. Updated ties.

October 13, 2014 - Found cast iron monument down 1'±. Verified position by static GPS methods.

October 27, 2014 - Raised cast iron monument flush. Verified position by VRS GPS methods. Updated ties.

August 13, 2019 - Found cast iron monument flush and updated ties.

June 1, 2022 - Found cast iron monument flush, verified position by VRS GPS method and updated ties.