

CERTIFICATE OF LOCATION OF GOVERNMENT CORNER

County of Anoka

State of Minnesota

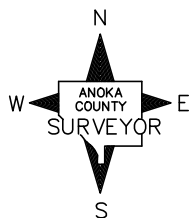
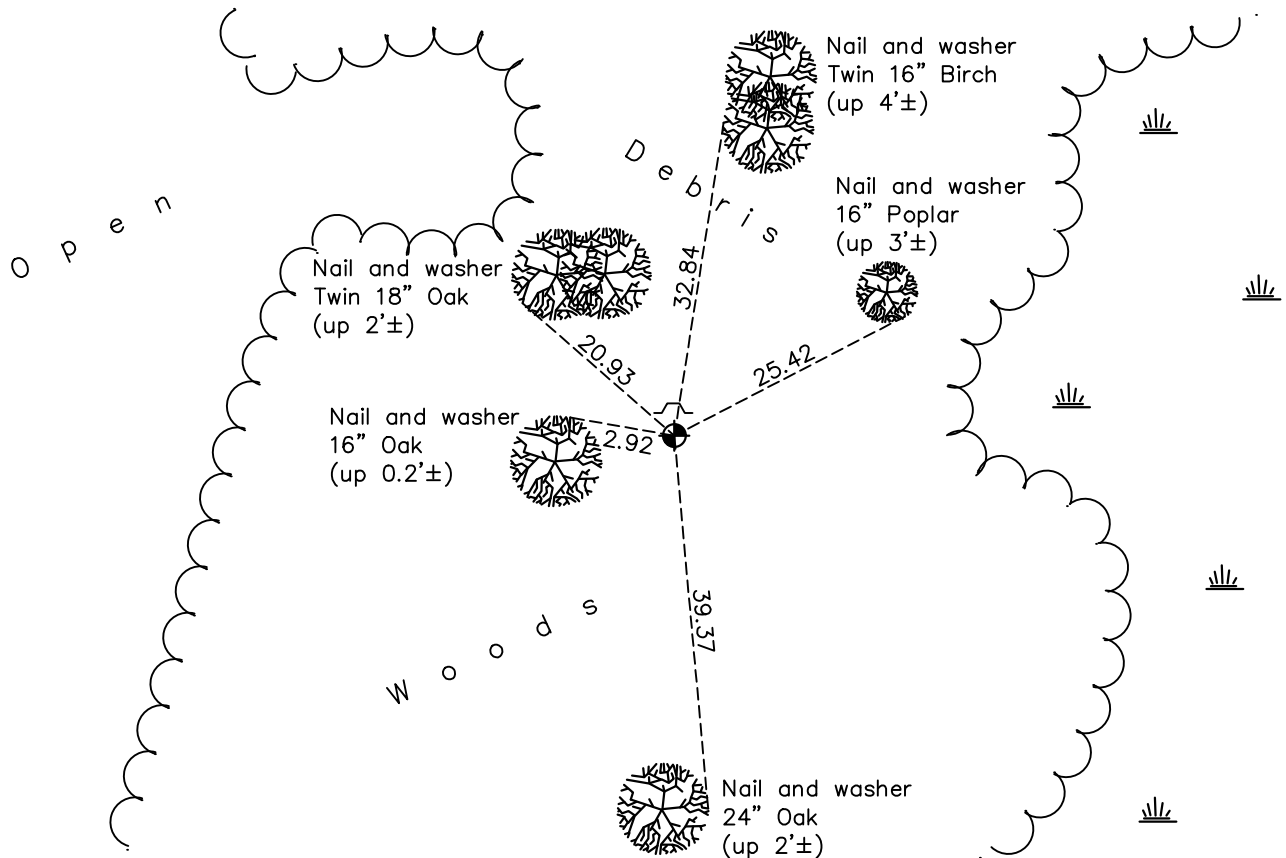
East 1/4 Corner of Sec. 28 Township 32 Range 22

On the 1st day of November, 1978, the described corner was evidenced by area resurvey

and to perpetuate the location of said corner, at the exact location thereof, a permanent marker was placed consisting of a cast iron monument with a sign and post on the north side

AND on the 2nd day of June, 2022, said permanent marker was found down 0.1'± and the ties were updated

Updated reference ties are as shown below.



Revision Date
 12/06/2022

N.A.D. 1983 Coordinates
 (1996 Adjustment)

County Project Coordinates	
Northing	<u>172025.0649</u>
Easting	<u>547927.1519</u>
Date	<u>2/07/06</u>

I hereby certify that this United States public land survey monument record is correct and complete to the best of my knowledge and belief.
David Zieglmeier Date 12/8/23
 David Zieglmeier Anoka County Surveyor
 Minnesota License Number 46179

HISTORY OF GOVERNMENT CORNER

Page No. 99

County of Anoka

State of Minnesota

East 1/4 Corner of Sec. 28 Township 32 Range 22

CORNER HISTORY:

November 1, 1978 - Set cast iron monument flush using area resurvey. Set sign and post on North side. Established ties to monument.

June 12, 1990 - Found cast iron monument and updated ties.

August 23, 1995 - Found cast iron monument and updated ties.

January 5, 1998 - Found cast iron monument and updated ties.

February 7, 2006 - Found cast iron monument. Updated ties. Established NAD 1983 (1996 adj.) Anoka County project coordinates by static GPS methods.

October 20, 2014 - Found cast iron monument and updated ties.

November 18, 2019 - Found cast iron monument and updated ties.

June 2, 2022 - Found cast iron monument, verified position by VRS GPS method and updated ties.