

CERTIFICATE OF LOCATION OF GOVERNMENT CORNER

County of Anoka

State of Minnesota

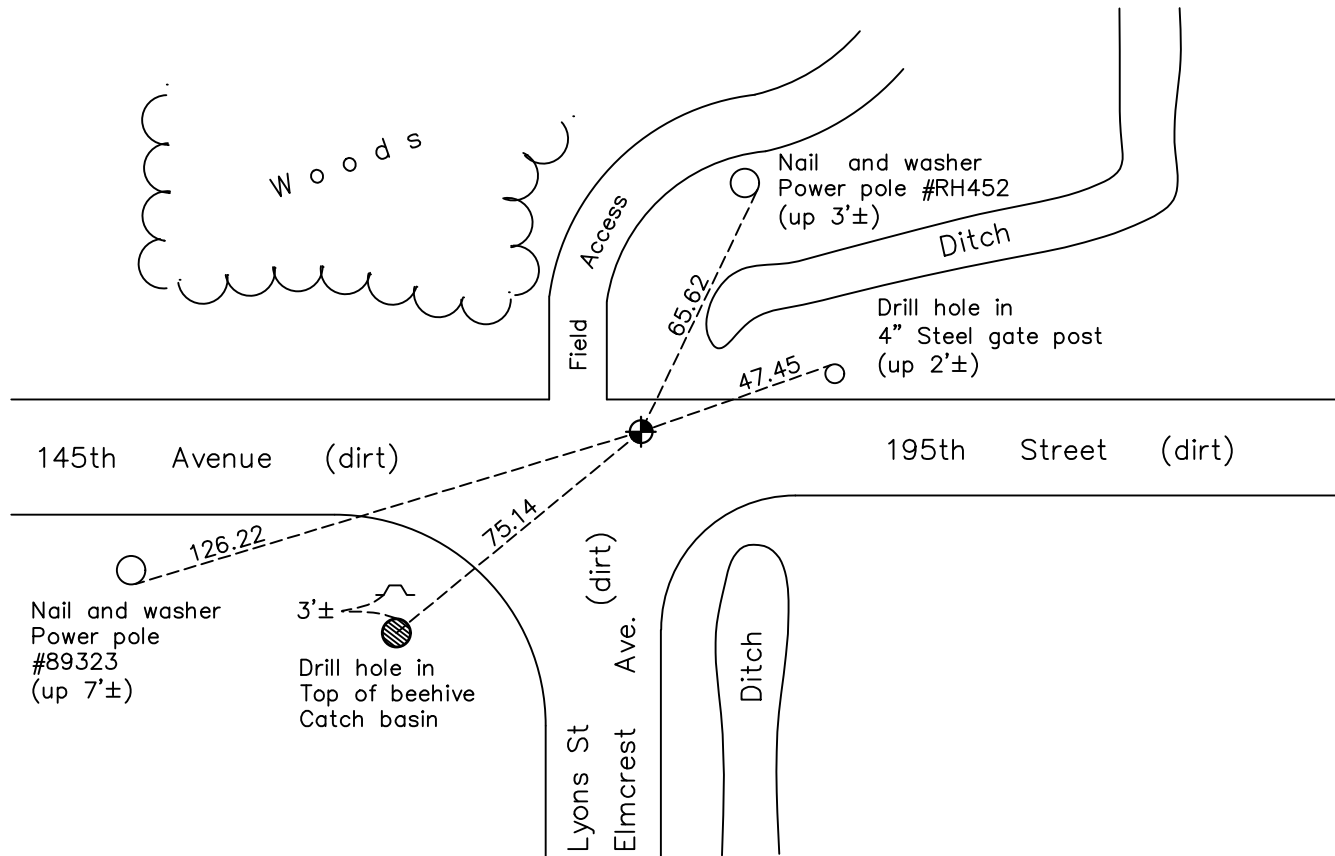
East 1/4 Corner of Sec. 25 Township 32 Range 22

On the 18th day of September, 1964, the described corner was evidenced by a 3/4" iron pipe set by Don Hult

and to perpetuate the location of said corner, at the exact location thereof, a permanent marker was placed consisting of a cast iron monument

AND on the 3rd day of June, 2022, said permanent marker was found down 0.6'± and the ties were updated.

Updated reference ties are as shown below.



Revision Date
 12/06/2022

N.A.D. 1983 Coordinates
 (1996 Adjustment)

County Project Coordinates	
Northing	<u>171999.9818</u>
Easting	<u>563702.7194</u>
Date	<u>6/26/03</u>

I hereby certify that this United States public land survey monument record is correct and complete to the best of my knowledge and belief.
David Zieglmeier Date 12/8/23
 David Zieglmeier Anoka County Surveyor
 Minnesota License Number 46179

HISTORY OF GOVERNMENT CORNER

Page No. 102

County of Anoka

State of Minnesota

East 1/4 Corner of Sec. 25 Township 32 Range 22

CORNER HISTORY:

September 18, 1964 - Found 3/4" iron pipe flush believed to be set by Don Hult. Updated ties.

June 25, 1970 - Found 3/4" iron pipe and replaced with a cast iron monument flush. Updated ties.

June 11, 1973 - Found cast iron monument and updated ties.

August 11, 1976 - Found cast iron monument and updated ties.

August 2, 1979 - Found cast iron monument and updated ties.

July 8, 1982 - Found cast iron monument and updated ties.

August 9, 1985 - Found cast iron monument and updated ties.

August 25, 1989 - Found cast iron monument and updated ties.

November 30, 1992 - Found cast iron monument and updated ties.

August 25, 1995 - Found cast iron monument and updated ties.

June 26, 2003 - Established NAD 1983 (1996 adj.) Anoka County project coordinates by static GPS methods.

April 8, 2008 - Found cast iron monument broken off and two ties remaining. In need of reset.

September 19, 2014 - Found cast iron monument gone and in need of reset.

October 13, 2014 - Set temporary spike and checked position by static GPS methods.

October 23, 2014 - Set cast iron monument down 0.6'± using static GPS methods. Verified position by VRS GPS methods. Updated ties.

August 13, 2019 - Found cast iron monument down 0.6'±. Verified position by VRS GPS methods. Updated ties.

June 3, 2022 - Found cast iron monument down 0.6'±. Verified position by VRS GPS methods. Updated ties.