

CERTIFICATE OF LOCATION OF GOVERNMENT CORNER

County of Anoka

State of Minnesota

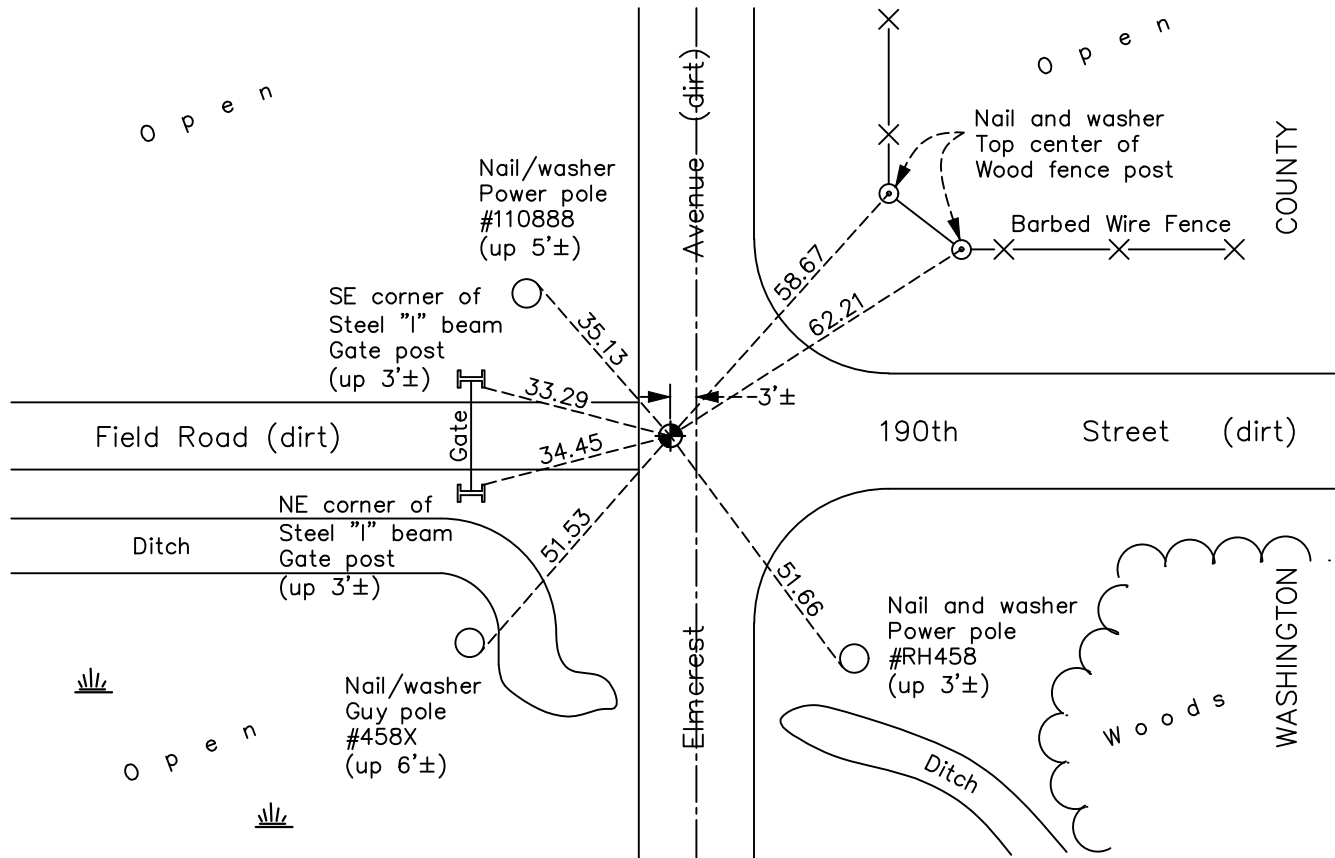
Northeast Corner of Sec. 36 Township 32 Range 22

On the 4th day of June, 1962, the described corner was evidenced by a bent 1" iron pipe

and to perpetuate the location of said corner, at the exact location thereof, a permanent marker was placed consisting of a cast iron monument down 1.5'±

AND on the 3rd day of June, 2022, said permanent marker was found down 1.6'± and the ties were updated.

Updated reference ties are as shown below.



Revision Date
 12/06/2022

N.A.D. 1983 Coordinates
 (1996 Adjustment)

County Project Coordinates	
Northing	169367.1942
Easting	563657.0913
Date	6/18/03

I hereby certify that this United States public land survey monument record is correct and complete to the best of my knowledge and belief.

David Zieglmeier Date 12/8/23

David Zieglmeier Anoka County Surveyor
 Minnesota License Number 46179

HISTORY OF GOVERNMENT CORNER

Page No. 103

County of Anoka

State of Minnesota

Northeast Corner of Sec. 36 Township 32 Range 22

CORNER HISTORY:

Unknown date - Minnesota highway department found a 1" pipe and updated the ties.

June 4, 1962 - Found bent 1" iron pipe down 0.5' using Minnesota highway department ties. Straightened up pipe and updated ties.

September 18, 1964 - Found iron pipe and updated ties.

June 30, 1970 - Found iron pipe and replaced with a cast iron monument down 0.4'± using corner ties. Updated ties.

June 11, 1973 - Found cast iron monument and updated ties.

August 11, 1976 - Found cast iron monument and updated ties.

August 2, 1979 - Found cast iron monument and updated ties.

July 8, 1982 - Found cast iron monument and updated ties.

August 9, 1985 - Found cast iron monument and updated ties.

August 24, 1989 - Found cast iron monument and updated ties.

August 25, 1995 - Found cast iron monument and updated ties.

June 18, 2003 - Established NAD 1983 (1996 adj.) Anoka County project coordinates by static GPS methods.

April 8, 2008 - Found cast iron monument down 2'± and updated ties.

September 17, 2014 - Found cast iron monument down 1'±. Verified position by VRS GPS methods. Updated ties.

August 13, 2019 - Found cast iron monument down 1.5'±. Verified position by VRS GPS methods. Updated ties.

June 3, 2022 - Found cast iron monument down 1.6'±. Verified position by VRS GPS methods. Updated ties.