

CERTIFICATE OF LOCATION OF GOVERNMENT CORNER

County of Anoka

State of Minnesota

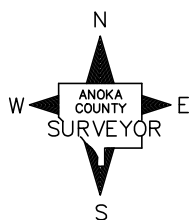
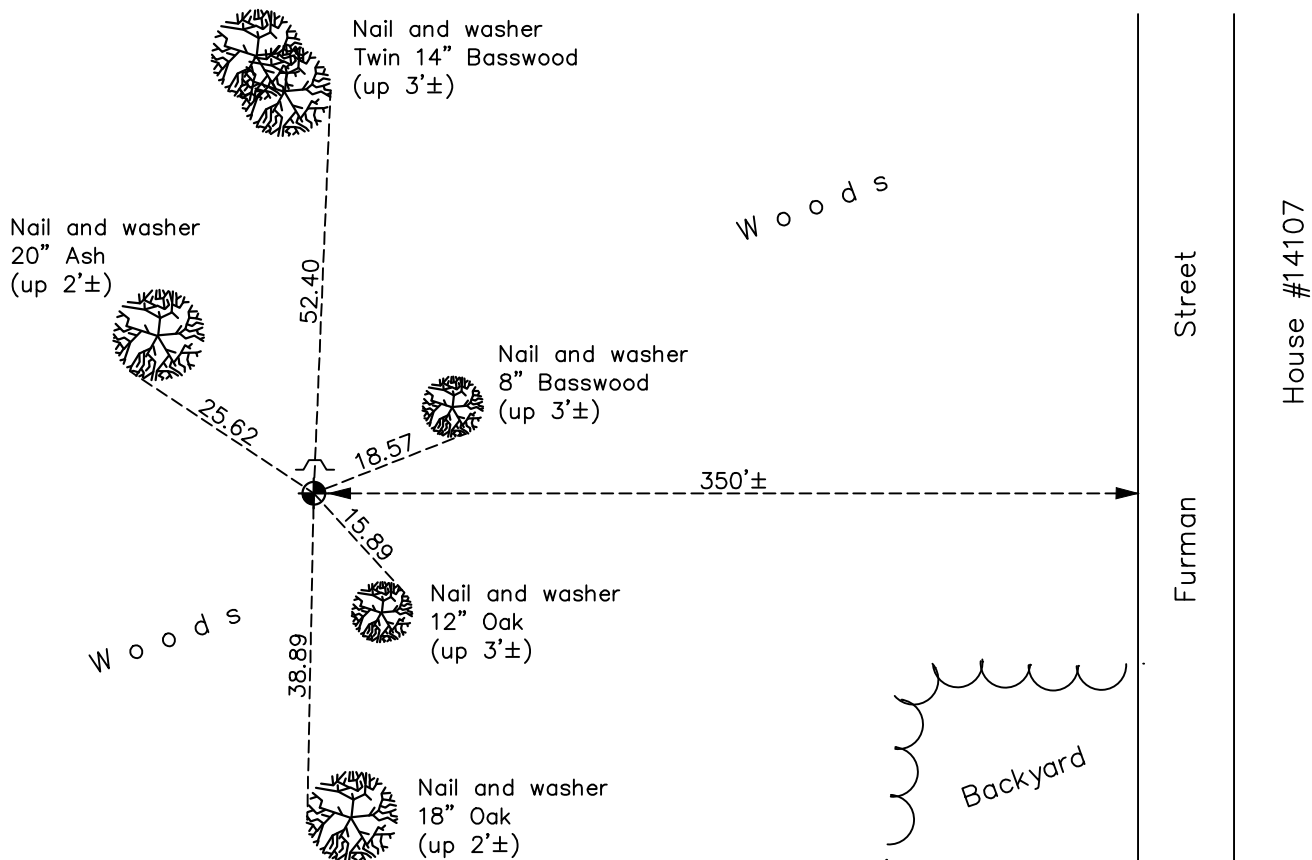
Northwest Corner of Sec. 35 Township 32 Range 22

On the 2nd day of July, 1974, the described corner was evidenced by area resurvey

and to perpetuate the location of said corner, at the exact location thereof, a permanent marker was placed consisting of a cast iron monument with a sign and post on the north side

AND on the 7th day of June, 2022, said permanent marker was found up 0.2'± and the ties were updated

Updated reference ties are as shown below.



N.A.D. 1983 Coordinates
(1996 Adjustment)

County Project Coordinates	
Northing	<u>169441.5963</u>
Easting	<u>553157.1078</u>
Date	<u>1/24/06</u>

Revision Date
12/07/2022

I hereby certify that this United States public land survey monument record is correct and complete to the best of my knowledge and belief.
David Zieglmeier Date 12/8/23
 David Zieglmeier Anoka County Surveyor
 Minnesota License Number 46179

HISTORY OF GOVERNMENT CORNER

Page No. 107

County of Anoka

State of Minnesota

Northwest Corner of Sec. 35 Township 32 Range 22

CORNER HISTORY:

July 2, 1974 - Set cast iron monument flush using area resurvey. Established ties to monument.

August 11, 1976 - Found cast iron monument and updated ties.

August 3, 1979 - Found cast iron monument and updated ties.

July 14, 1982 - Found cast iron monument and updated ties.

August 15, 1985 - Found cast iron monument and updated ties.

July 5, 1990 - Found cast iron monument and updated ties.

January 11, 1993 - Found cast iron monument and updated ties.

August 23, 1995 - Found cast iron monument and updated ties.

January 24, 2006 - Established NAD 1983 (1996 adj.) Anoka County project coordinates by static GPS methods.

October 20, 2014 - Found cast iron monument up 0.2'± and updated ties.

September 26, 2019 - Found cast iron monument up 0.2'± and updated ties.

June 7, 2022 - Found cast iron monument up 0.2'±, verified position by VRS GPS method and updated ties