

# CERTIFICATE OF LOCATION OF GOVERNMENT CORNER

County of Anoka

State of Minnesota

## Witness Corner of Sec. 28 Township 32 Range 22

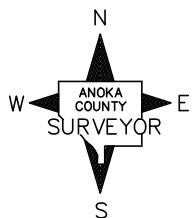
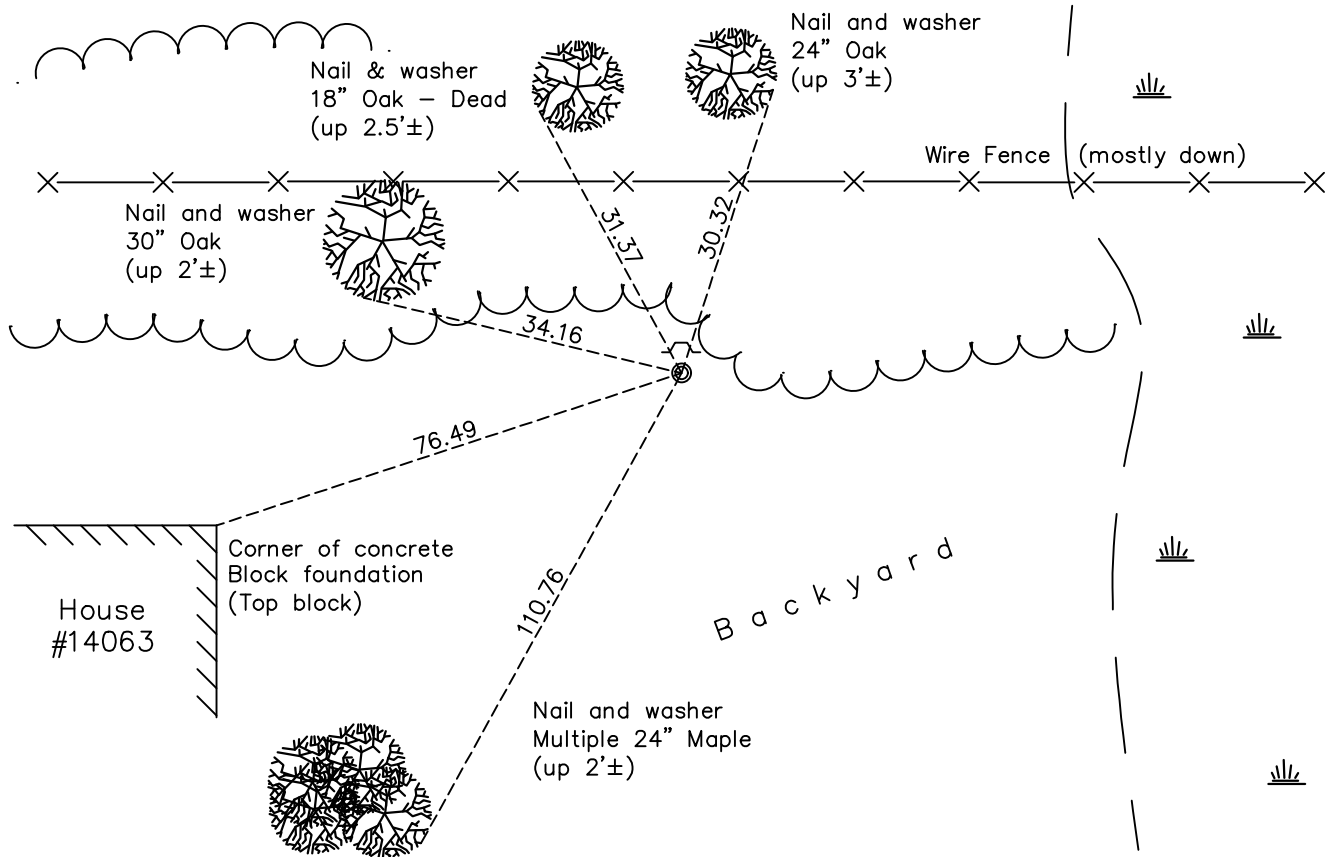
(on south line of SE 1/4)

On the 14th day of January, 1998, the described corner was evidenced by area resurvey

and to perpetuate the location of said corner, at the exact location thereof, a permanent marker was placed consisting of a 1/2" iron pipe with a sign and post on the north side

AND on the 8th day of June, 2022, said permanent marker was found down 0.1'± with an Anoka County cap and sign/ post 1'± north of monument. The ties were updated.

Updated reference ties are as shown below.



Revision Date  
12/07/2022

N.A.D. 1983 Coordinates  
 (1996 Adjustment)

County Project Coordinates	
Northing	<u>169392.9109</u>
Easting	<u>546411.9966</u>
Date	<u>5/18/04</u>

I hereby certify that this United States public land survey monument record is correct and complete to the best of my knowledge and belief.  
David Zieglmeier Date 12/8/23  
 David Zieglmeier Anoka County Surveyor  
 Minnesota License Number 46179

# HISTORY OF GOVERNMENT CORNER

Page No. 110

County of Anoka

State of Minnesota

Witness Corner of Sec. 28 Township 32 Range 22  
(on south line of SE 1/4)

## **CORNER HISTORY:**

January 14, 1998 - Set 1/2" iron pipe using area resurvey. set sign and post on North side. Established ties to iron pipe.

May 18, 2004 - Established NAD 1983 (1996 adj.) Anoka County project coordinates by static GPS methods.

September 24, 2014 - Found 1/2" iron pipe with Anoka County cap and sign and post on North side. Updated ties.

August 23, 2019 - Found 1/2" iron pipe with Anoka County cap and sign and post on North side. Verified position by VRS GPS methods. Updated ties.

June 8, 2022 - Found 1/2" Iron Pipe w/ Anoka County cap found down 0.1'±, verified position by VRS GPS method and updated ties.