

CERTIFICATE OF LOCATION OF GOVERNMENT CORNER

County of Anoka

State of Minnesota

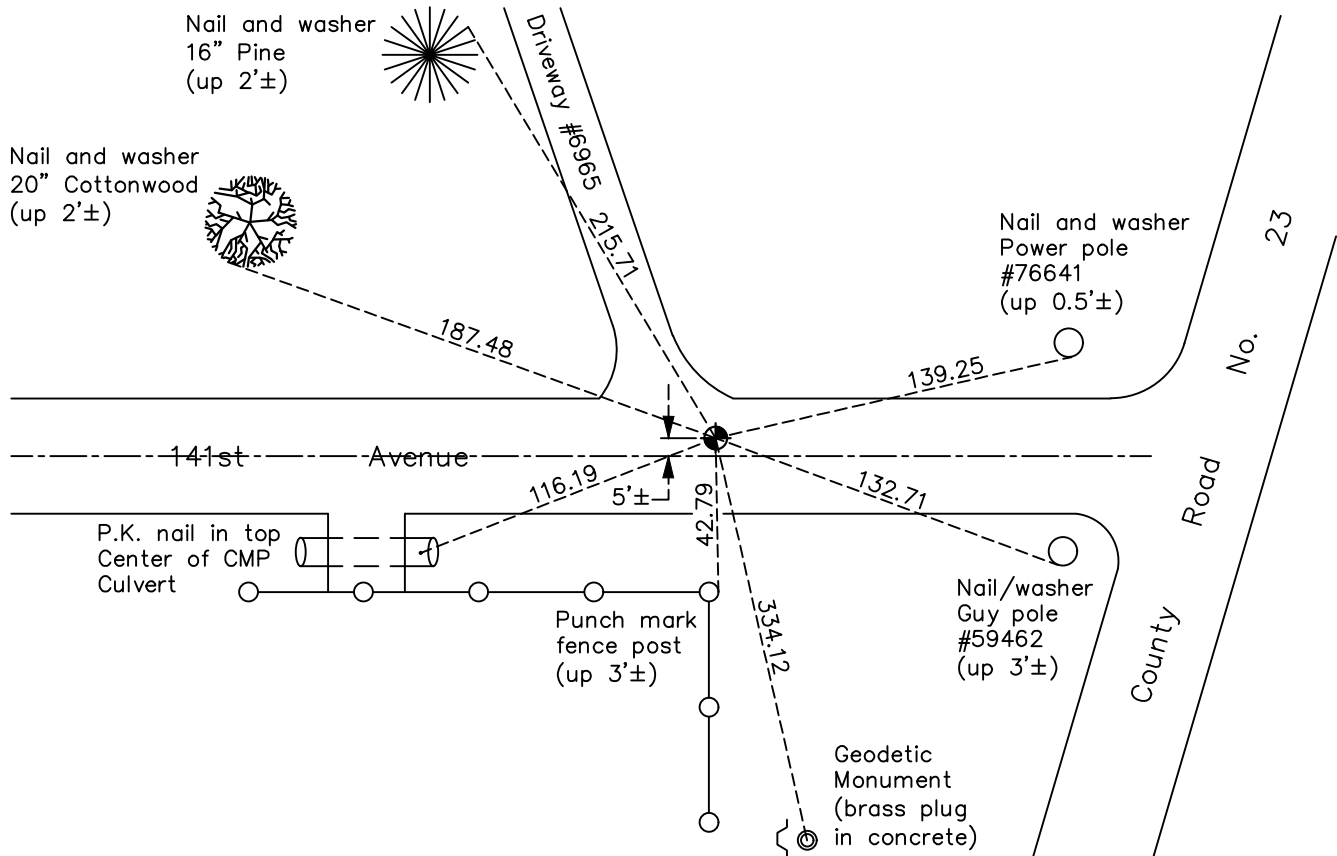
South 1/4 Corner of Sec. 28 Township 32 Range 22

On the 14th day of August, 1970, the described corner was evidenced by a 1 1/4" iron pipe

and to perpetuate the location of said corner, at the exact location thereof, a permanent marker was placed consisting of a cast iron monument

AND on the 13th day of June, 2022, said permanent marker was found flush with road surface and the ties were updated

Updated reference ties are as shown below.



Revision Date
 12/07/2022

N.A.D. 1983 Coordinates
 (1996 Adjustment)

| County Project Coordinates | |
|----------------------------|-------------|
| Northing | 169394.2739 |
| Easting | 545319.8554 |
| Date | 6/24/03 |

I hereby certify that this United States public land survey monument record is correct and complete to the best of my knowledge and belief.
David Zieglmeier Date 12/8/23
 David Zieglmeier Anoka County Surveyor
 Minnesota License Number 46179

HISTORY OF GOVERNMENT CORNER

Page No. 111

County of Anoka

State of Minnesota

South 1/4 Corner of Sec. 28 Township 32 Range 22

CORNER HISTORY:

August 14, 1970 - Found 1-1/4" iron pipe down 0.5'± set by Jim Kurth. Set a cast iron monument down 0.5'± using corner ties.

June 12, 1973 - Found cast iron monument and updated ties.

August 12, 1976 - Found cast iron monument and updated ties.

June 10, 1977 - Found cast iron monument and updated ties.

May 10, 1978 - Reset cast iron monument down 8" using position by Don Hult. Updated ties.

July 14, 1982 - Found cast iron monument and updated ties.

August 28, 1989 - Found cast iron monument and updated ties.

August 10, 1995 - Found cast iron monument and updated ties.

January 5, 1998 - Found cast iron monument down 2'± and updated ties.

June 24, 2003 - Established NAD 1983 (1996 adj.) Anoka County project coordinates by static GPS methods.

September 11, 2014 - Found cast iron monument down 1.5'±. Verified position by VRS GPS methods. Updated ties.

May 13, 2020 - Found cast iron monument down 1.5'± under blacktop road. Set 3/4 partial cast iron monument on top, flush with blacktop road. Updated ties.

June 13, 2022 - Found cast iron monument flush, verified position by VRS GPS method and updated ties.