

CERTIFICATE OF LOCATION OF GOVERNMENT CORNER

County of Anoka

State of Minnesota

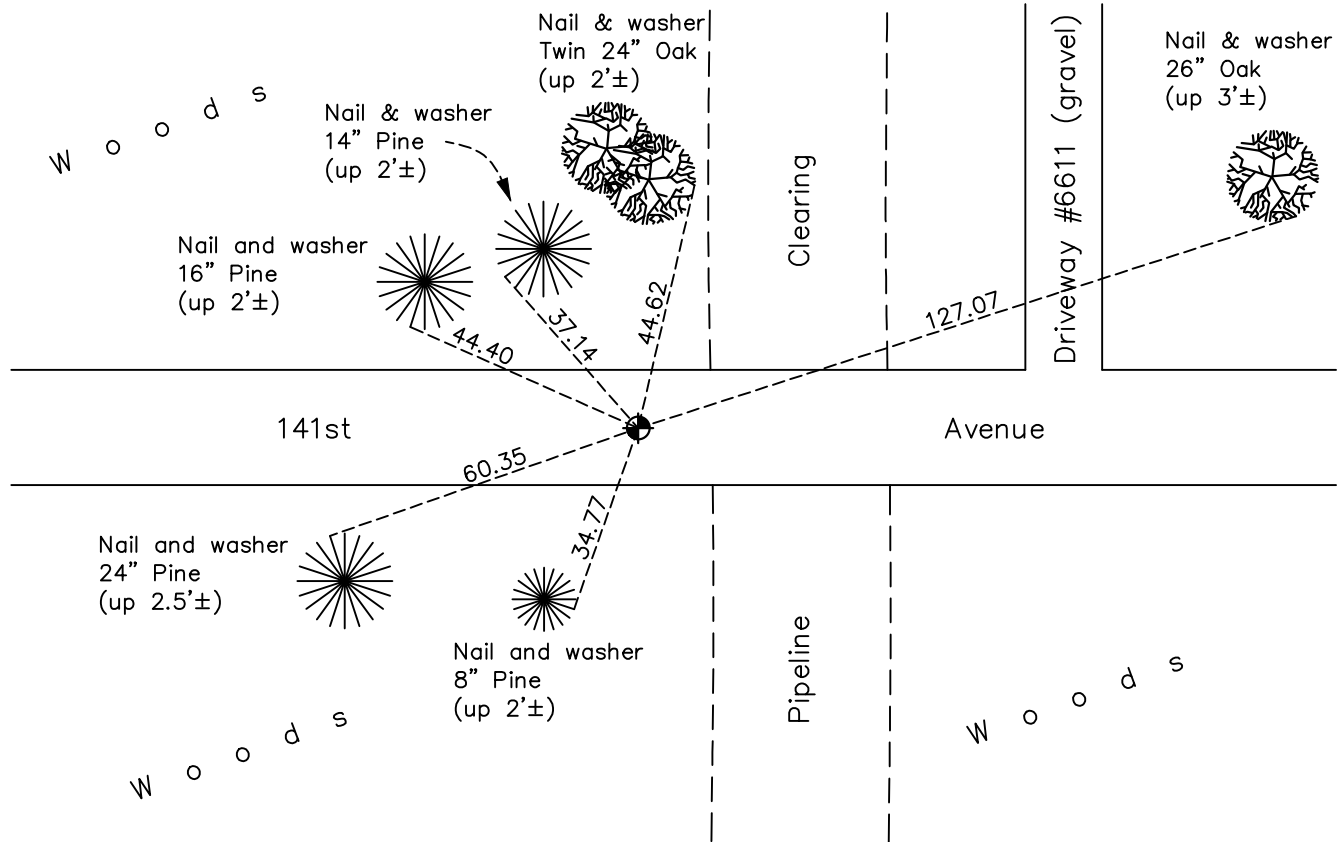
Northwest Corner of Sec. 33 Township 32 Range 22

On the 21st day of April, 1966, the described corner was evidenced by area resurvey

and to perpetuate the location of said corner, at the exact location thereof, a permanent marker was placed consisting of a cast iron monument

AND on the 16th day of June, 2022, said permanent marker was found flush with road surface and the ties were updated

Updated reference ties are as shown below.



Revision Date
 12/07/2022

N.A.D. 1983 Coordinates
 (1996 Adjustment)

County Project Coordinates	
Northing	169384.8522
Easting	542675.4098
Date	6/24/03

I hereby certify that this United States public land survey monument record is correct and complete to the best of my knowledge and belief.
David Zieglmeier Date 12/8/23
 David Zieglmeier Anoka County Surveyor
 Minnesota License Number 46179

HISTORY OF GOVERNMENT CORNER

Page No. 112

County of Anoka

State of Minnesota

Northwest Corner of Sec. 33 Township 32 Range 22

CORNER HISTORY:

April 21, 1966 - Set cast iron monument down 0.5'± using area resurvey. Established ties to monument.

June 29, 1970 - Found cast iron monument and updated ties.

June 12, 1973 - Found cast iron monument and updated ties.

August 12, 1976 - Found cast iron monument and updated ties.

August 20, 1977 - Lowered cast iron monument after road construction (down 0.5'±). Updated ties.

August 3, 1979 - Found cast iron monument and updated ties.

August 28, 1989 - Found cast iron monument and updated ties.

February 10, 1993 - Found cast iron monument and updated ties.

August 10, 1995 - Found cast iron monument and updated ties.

January 5, 1998 - Found cast iron monument down 1'± and updated ties.

June 24, 2003 - Established NAD 1983 (1996 adj.) Anoka County project coordinates by static GPS methods.

September 11, 2014 - Found cast iron monument down 1.5'± and updated ties.

May 13, 2020 - Found cast iron monument down 1.5'± under blacktop road. Set 3/4 partial cast iron monument on top, flush with blacktop road. Updated ties.

June 16, 2022 - Found cast iron monument flush, verified position by VRS GPS method and updated ties.