

CERTIFICATE OF LOCATION OF GOVERNMENT CORNER

County of Anoka

State of Minnesota

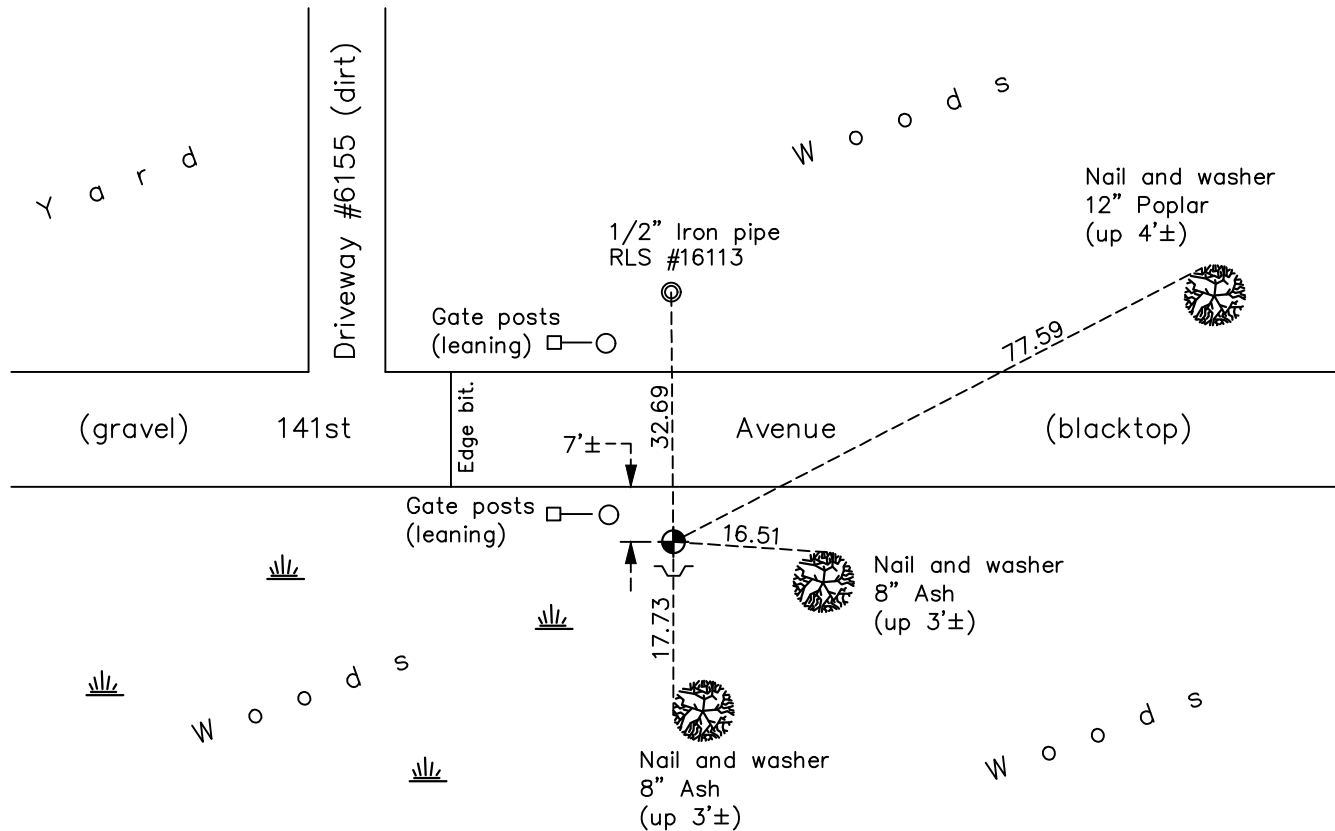
South 1/4 Corner of Sec. 29 Township 32 Range 22

On the 12th day of January, 1979, the described corner was evidenced by a 1/2" iron pipe

and to perpetuate the location of said corner, at the exact location thereof, a permanent marker was placed consisting of a cast iron monument with a sign and post on the south side

AND on the 16th day of June, 2022, said permanent marker was found up 0.2'± and the ties were updated

Updated reference ties are as shown below.



Revision Date
 12/07/2022

N.A.D. 1983 Coordinates
 (1996 Adjustment)

County Project Coordinates	
Northing	<u>169377.1635</u>
Easting	<u>540051.2013</u>
Date	<u>6/16/03</u>

I hereby certify that this United States public land survey monument record is correct and complete to the best of my knowledge and belief.
David Zieglmeier Date 12/8/23
 David Zieglmeier Anoka County Surveyor
 Minnesota License Number 46179

HISTORY OF GOVERNMENT CORNER

Page No. 113

County of Anoka

State of Minnesota

South 1/4 Corner of Sec. 29 Township 32 Range 22

CORNER HISTORY:

January 12, 1979 - Found 1/2" iron pipe up 0.3'± in bottom of ditch set by Charles Dahlgren registration #3073 and updated the ties.

May 17, 1979 - Found 1/2" iron pipe set by Charles Dahlgren and replaced with a cast iron monument in bottom of ditch. Updated ties.

July 14, 1982 - Found cast iron monument and updated ties.

August 14, 1985 - Found cast iron monument and updated ties.

August 28, 1989 - Found cast iron monument and updated ties.

March 9, 1994 - Found cast iron monument and updated ties.

August 10, 1995 - Found cast iron monument and updated ties.

October 6, 2000 - Found cast iron monument and updated ties.

June 16, 2003 - Established NAD 1983 (1996 adj.) Anoka County project coordinates by static GPS methods.

September 11, 2014 - Found cast iron monument and updated ties.

August 21, 2019 - Found cast iron monument up 0.2'±. Verified position by VRS GPS methods. Updated ties.

June 16, 2022 - Found cast iron monument up 0.2'±, verified position by VRS GPS method and updated ties.