

CERTIFICATE OF LOCATION OF GOVERNMENT CORNER

County of Anoka

State of Minnesota

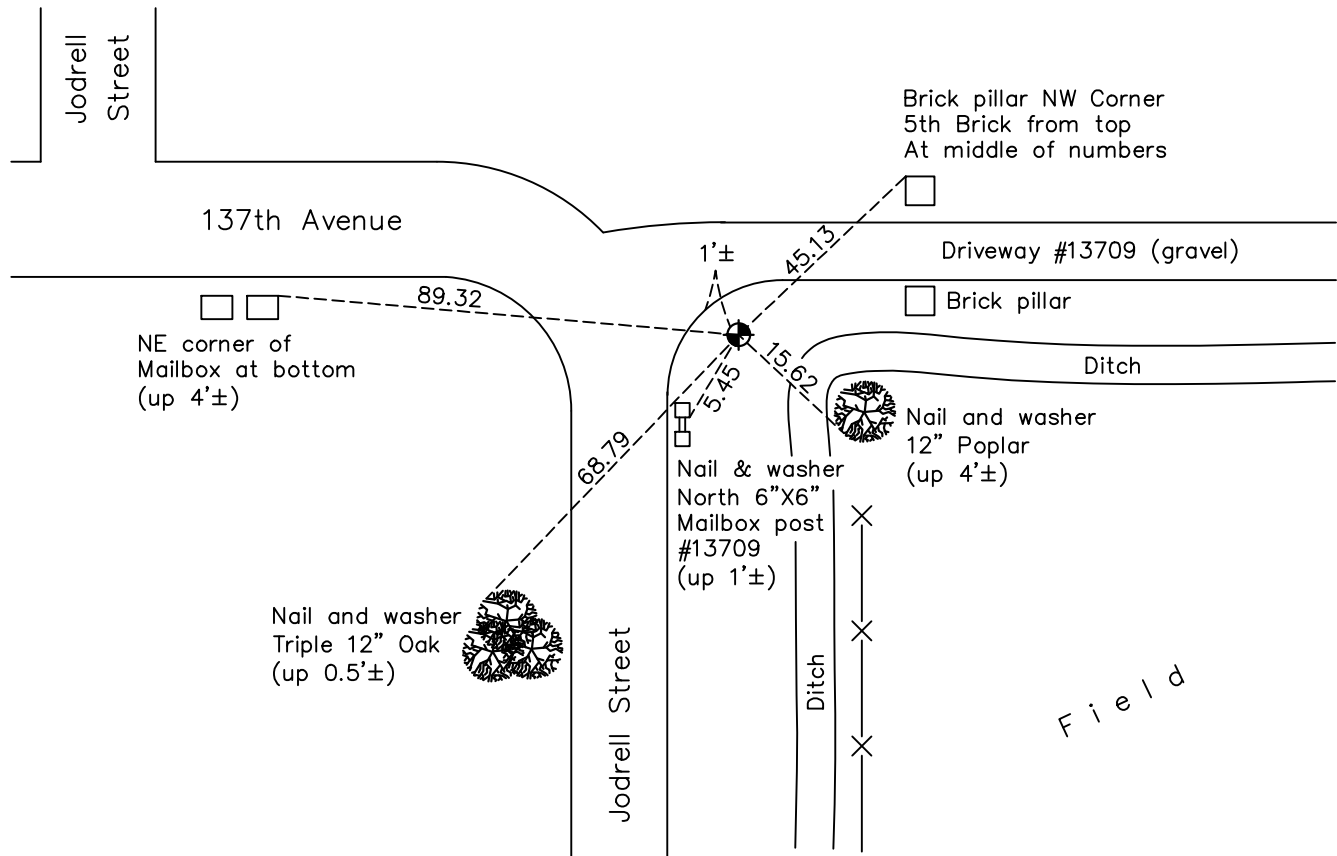
East 1/4 Corner of Sec. 31 Township 32 Range 22

On the 27th day of April, 1979, the described corner was evidenced by area resurvey

and to perpetuate the location of said corner, at the exact location thereof, a permanent marker was placed consisting of a cast iron monument

AND on the 8th day of June, 2022, said permanent marker was found down 2'± and the ties were updated

Updated reference ties are as shown below.



Revision Date
12/07/2022

N.A.D. 1983 Coordinates
(1996 Adjustment)

County Project Coordinates	
Northing	<u>166736.9122</u>
Easting	<u>537419.7445</u>
Date	<u>6/26/03</u>

I hereby certify that this United States public land survey monument record is correct and complete to the best of my knowledge and belief.

David Zieglmeier Date 12/8/23

David Zieglmeier Anoka County Surveyor
Minnesota License Number 46179

HISTORY OF GOVERNMENT CORNER

Page No. 116

County of Anoka

State of Minnesota

East 1/4 Corner of Sec. 31 Township 32 Range 22

CORNER HISTORY:

April 27, 1979 - Set cast iron monument flush using area resurvey. Set sign and post on the North side. Established ties to monument.

July 14, 1982 - Found cast iron monument and updated ties.

August 7, 1985 - Found cast iron monument and updated ties.

August 29, 1989 - Found cast iron monument and updated ties.

August 10, 1995 - Found cast iron monument and updated ties.

June 26, 2003 - Established NAD 1983 (1996 adj.) Anoka County project coordinates by static GPS methods.

September 24, 2014 - Found cast iron monument down 2'± with sign and post missing. Verified position by VRS GPS methods. Updated ties.

August 23, 2019 - Found cast iron monument down 2'±. Verified position by VRS GPS methods. Updated ties.

June 8, 2022 - Found cast iron monument down 2'±, Verified position by VRS GPS methods and Updated ties.