

# CERTIFICATE OF LOCATION OF GOVERNMENT CORNER

County of Anoka

State of Minnesota

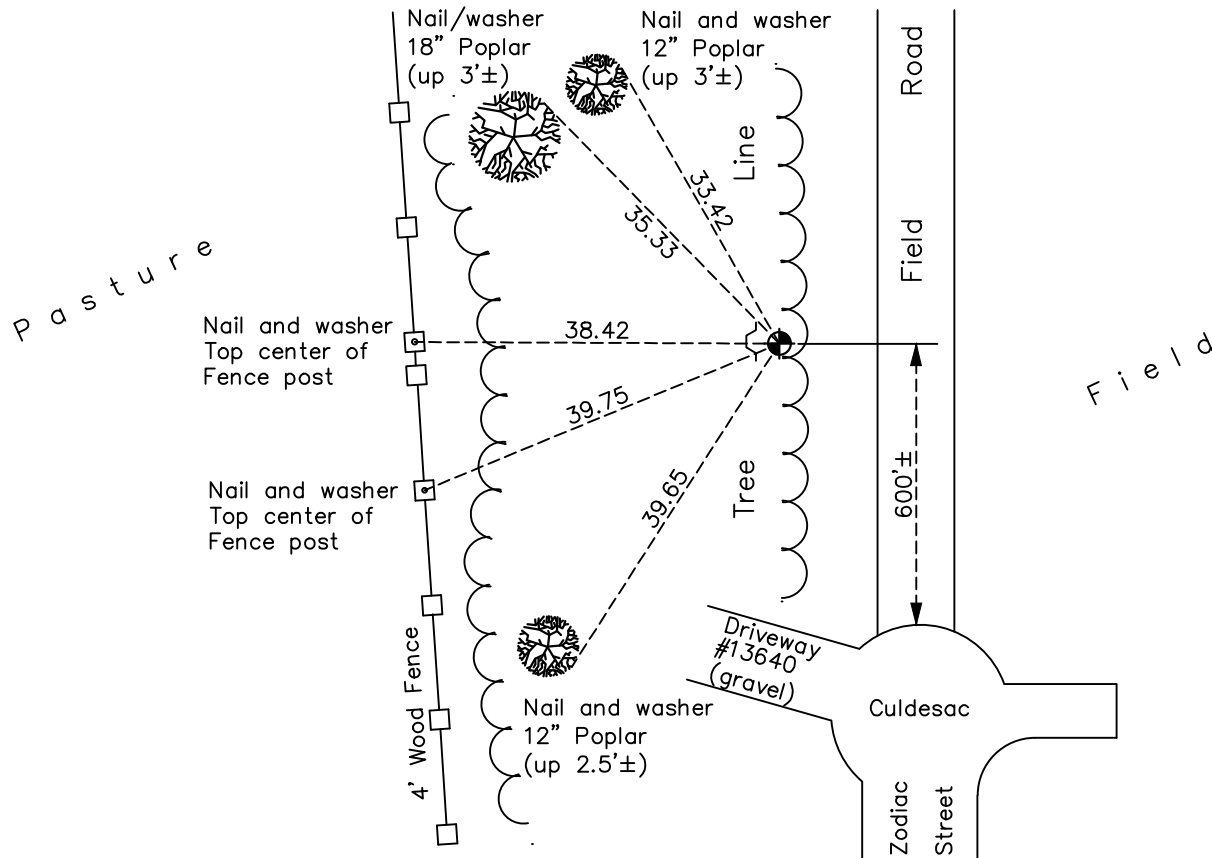
## West 1/4 Corner of Sec. 33 Township 32 Range 22

On the 12th day of May, 1977, the described corner was evidenced by area resurvey

and to perpetuate the location of said corner, at the exact location thereof, a permanent marker was placed consisting of a cast iron monument with a sign and post on the west side

AND on the 2nd day of June, 2022, said permanent marker was found down 1'± and the ties were updated

Updated reference ties are as shown below.



N.A.D. 1983 Coordinates  
(1996 Adjustment)

County Project Coordinates	
Northing	<u>166742.2236</u>
Easting	<u>542660.3984</u>
Date	<u>5/13/04</u>

Revision Date  
12/07/2022

I hereby certify that this United States public land survey monument record is correct and complete to the best of my knowledge and belief.

*David Zieglmeier* Date 12/8/23

David Zieglmeier Anoka County Surveyor  
 Minnesota License Number 46179

# HISTORY OF GOVERNMENT CORNER

Page No. 117

County of Anoka

State of Minnesota

West 1/4 Corner of Sec. 33 Township 32 Range 22

## **CORNER HISTORY:**

May 12, 1977 - Set cast iron monument using area resurvey. Set sign and post on West side. Established ties to monument.

August 7, 1979 - Found cast iron monument and updated ties.

July 27, 1982 - Found cast iron monument and updated ties.

August 7, 1985 - Found cast iron monument and updated ties.

June 12, 1990 - Found cast iron monument and updated ties.

August 22, 1995 - Found cast iron monument and updated ties.

May 13, 2004 - Established NAD 1983 (1996 adj.) Anoka County project coordinates by static GPS methods.

September 24, 2014 - Found cast iron monument down 1'± and updated ties.

August 23, 2019 - Found cast iron monument down 1'±. Verified position by VRS GPS methods. Updated ties.

June 2nd, 2022 - Found cast iron monument down 1'±. Verified position by VRS GPS methods. Updated ties.