

CERTIFICATE OF LOCATION OF GOVERNMENT CORNER

County of Anoka

State of Minnesota

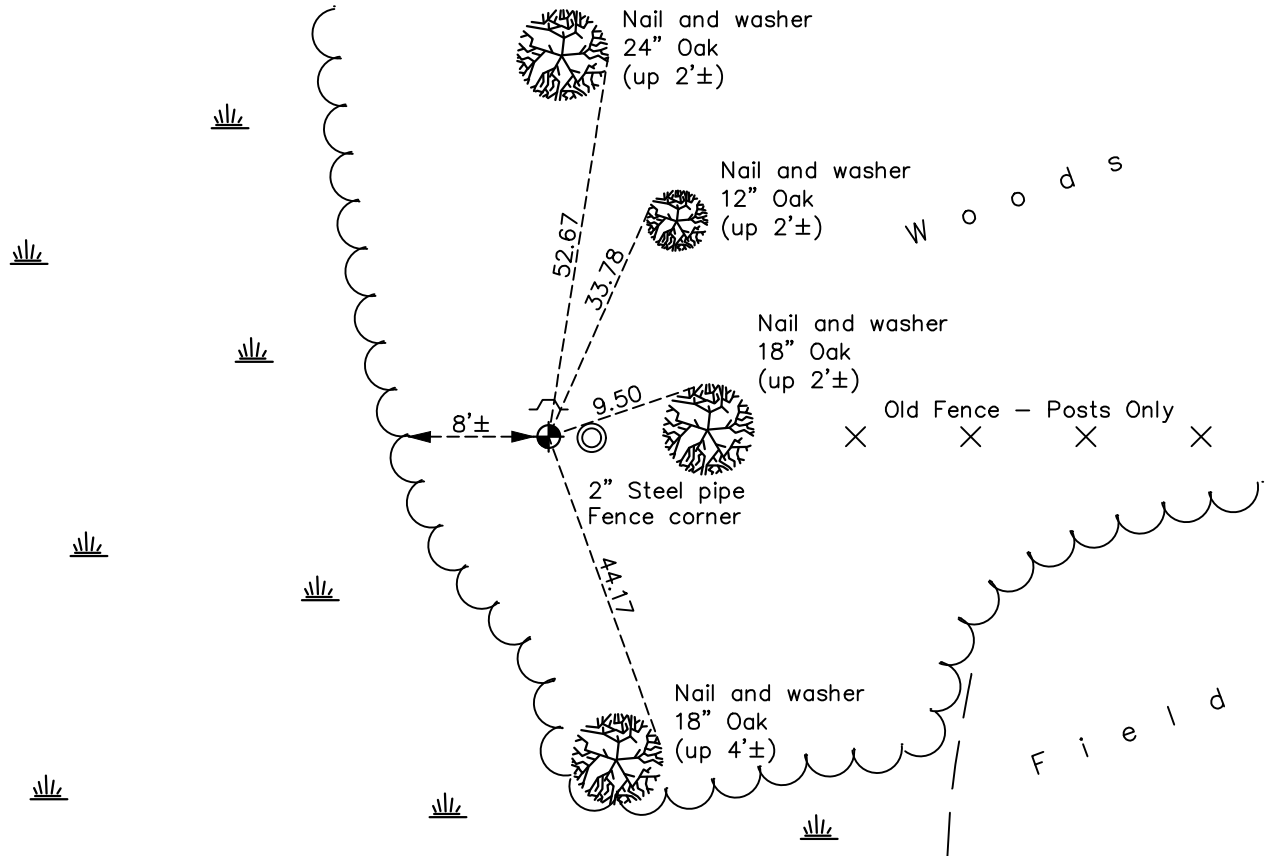
West 1/4 Corner of Sec. 34 Township 32 Range 22

On the 6th day of March, 1973, the described corner was evidenced by a tied iron pipe

and to perpetuate the location of said corner, at the exact location thereof, a permanent marker was placed consisting of a cast iron monument with a sign and post on the north side

AND on the 22nd day of June, 2022, said permanent marker was found down 0.1'± and the ties were updated

Updated reference ties are as shown below.



Revision Date
 12/07/2022

N.A.D. 1983 Coordinates
 (1996 Adjustment)

County Project Coordinates	
Northing	<u>166757.6426</u>
Easting	<u>547919.3260</u>
Date	<u>2/14/06</u>

I hereby certify that this United States public land survey monument record is correct and complete to the best of my knowledge and belief.
David Zieglmeier Date 12/8/23
 David Zieglmeier Anoka County Surveyor
 Minnesota License Number 46179

HISTORY OF GOVERNMENT CORNER

Page No. 118

County of Anoka

State of Minnesota

West 1/4 Corner of Sec. 34 Township 32 Range 22

CORNER HISTORY:

March 6, 1974 - N.C. Hoium found an iron pipe corner fence post up 5'± set in concrete. Updated ties.

August 12, 1976 - Found iron pipe corner fence post and updated ties.

August 7, 1985 - Found iron pipe corner fence post and updated ties.

February 9, 1993 - Found iron pipe corner fence post leaning. Set temporary 1/2" iron pipe and updated ties.

April 30, 1993 - Found temporary 1/2" iron pipe and replaced with a cast iron monument. 2" steel pipe corner fence post on East side. Set sign and post on North side. Updated ties.

August 22, 1995 - Found cast iron monument and updated ties.

February 14, 2006 - Established NAD 1983 (1996 adj.) Anoka County project coordinates by static GPS methods.

October 21, 2014 - Found cast iron monument and updated ties.

June 22, 2022 - Found cast iron monument down 0.1'±, verified position by VRS GPS method and updated ties