

CERTIFICATE OF LOCATION OF GOVERNMENT CORNER

County of Anoka

State of Minnesota

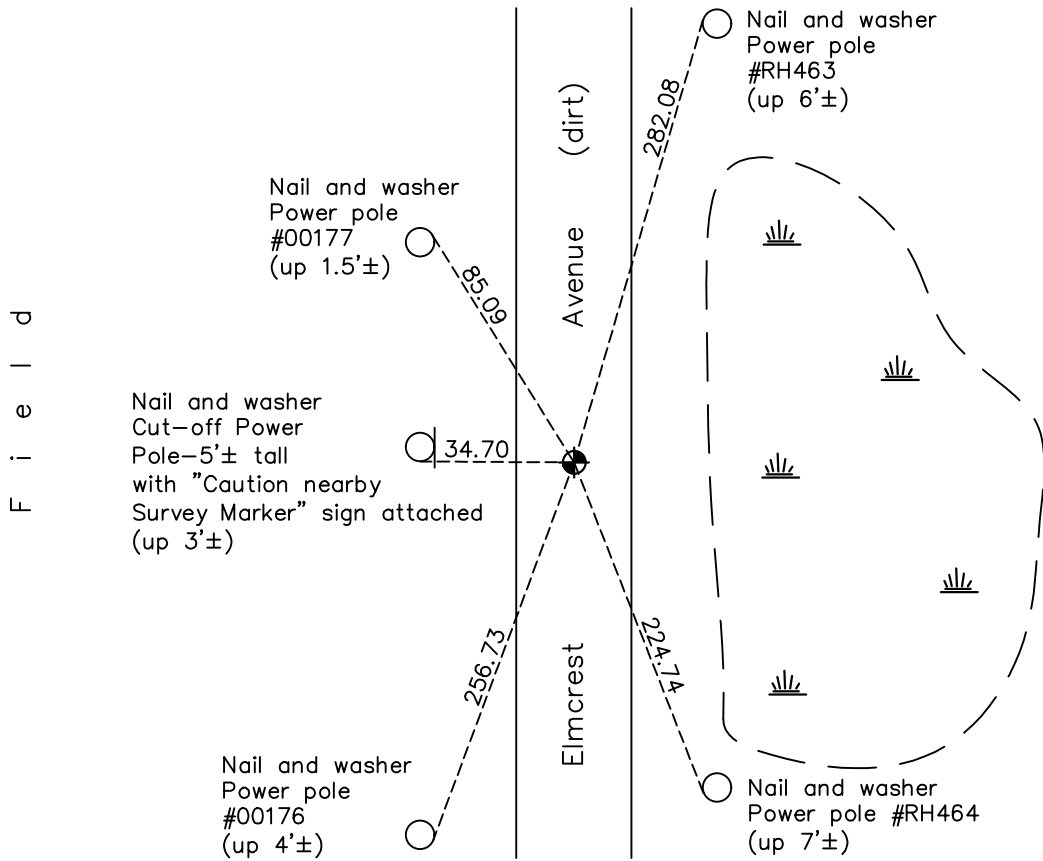
East 1/4 Corner of Sec. 36 Township 32 Range 22

On the 9th day of July, 1974, the described corner was evidenced by a 1/2" iron pipe set by D. Hult and D. Pepper

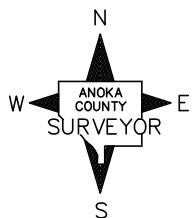
and to perpetuate the location of said corner, at the exact location thereof, a permanent marker was placed consisting of a cast iron monument down 0.5'±

AND on the 24th day of June, 2022, said permanent marker was found down 0.5'± and broken. Replaced w/ new CIM after ties updated using fins, set down 0.5'±. Ties updated after reset.

Updated reference ties are as shown below.



F
i
e
l
d



Revision Date
12/07/2022

N.A.D. 1983 Coordinates
(1996 Adjustment)

County Project Coordinates	
Northing	<u>166748.2803</u>
Easting	<u>563651.0535</u>
Date	<u>6/18/03</u>

I hereby certify that this United States public land survey monument record is correct and complete to the best of my knowledge and belief.

David Zieglmeier Date 12/18/23

David Zieglmeier Anoka County Surveyor
Minnesota License Number 46179

HISTORY OF GOVERNMENT CORNER

Page No. 122

County of Anoka

State of Minnesota

East 1/4 Corner of Sec. 36 Township 32 Range 22

CORNER HISTORY:

July 9, 1974 - Found 1/2" iron pipe down 0.5'± set by D. Pepper and D. Hult. Updated ties.

February 4, 1977 - Found 1/2" iron pipe and updated ties.

August 2, 1979 - Found 1/2" iron pipe and updated ties.

July 8, 1982 - Found 1/2" iron pipe and updated ties.

August 9, 1985 - Found 1/2" iron pipe and updated ties.

May 11, 1989 - Reset corner and updated ties.

August 25, 1995 - Found cast iron monument down 0.5'± and updated ties.

June 18, 2003 - Established NAD 1983 (1996 adj.) Anoka County project coordinates by static GPS methods.

April 9, 2008 - Found cast iron monument and updated ties.

September 19, 2014 - Found cast iron monument down 0.5'±. Verified position by VRS GPS methods. Updated ties.

August 13, 2019 - Found cast iron monument down 0.5'±. Verified position by VRS GPS methods. Updated ties.

June 24, 2022 - Found cast iron monument down 0.5'± broken. Established construction ties using center of fins, replaced w/ new cast iron monument set down 0.5'±, verified position by VRS GPS method. Updated ties.