

CERTIFICATE OF LOCATION OF GOVERNMENT CORNER

County of Anoka

State of Minnesota

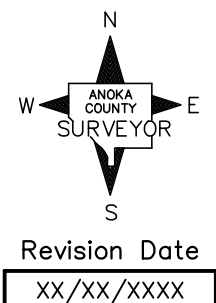
North 1/4 Corner of Sec. 26 Township 32 Range 22

On the XX day of XX, 1847, the described corner was evidenced by Wood post set

and to perpetuate the location of said corner, at the exact location thereof, a permanent marker was placed consisting of XXXXX

AND on the XX day of XX, XXXX, said permanent marker was XXXXX
XXXXX

Updated reference ties are as shown below.



N.A.D. 1983 Coordinates
 (2011 Adjustment)

County Project Coordinates	
Northing	<u>174681.547</u>
Easting	<u>555804.438</u>
Date	<u>COMPUTED DZ</u>

I hereby certify that this United States public land survey monument record is correct and complete to the best of my knowledge and belief.

_____ Date _____

David M. Zieglmeier, Anoka County Surveyor

Minnesota License Number 46179