

CERTIFICATE OF LOCATION OF GOVERNMENT CORNER

County of Anoka

State of Minnesota

Witness Corner of Sec. 22 Township 32 Range 22

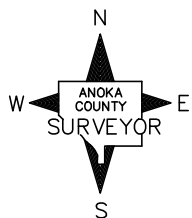
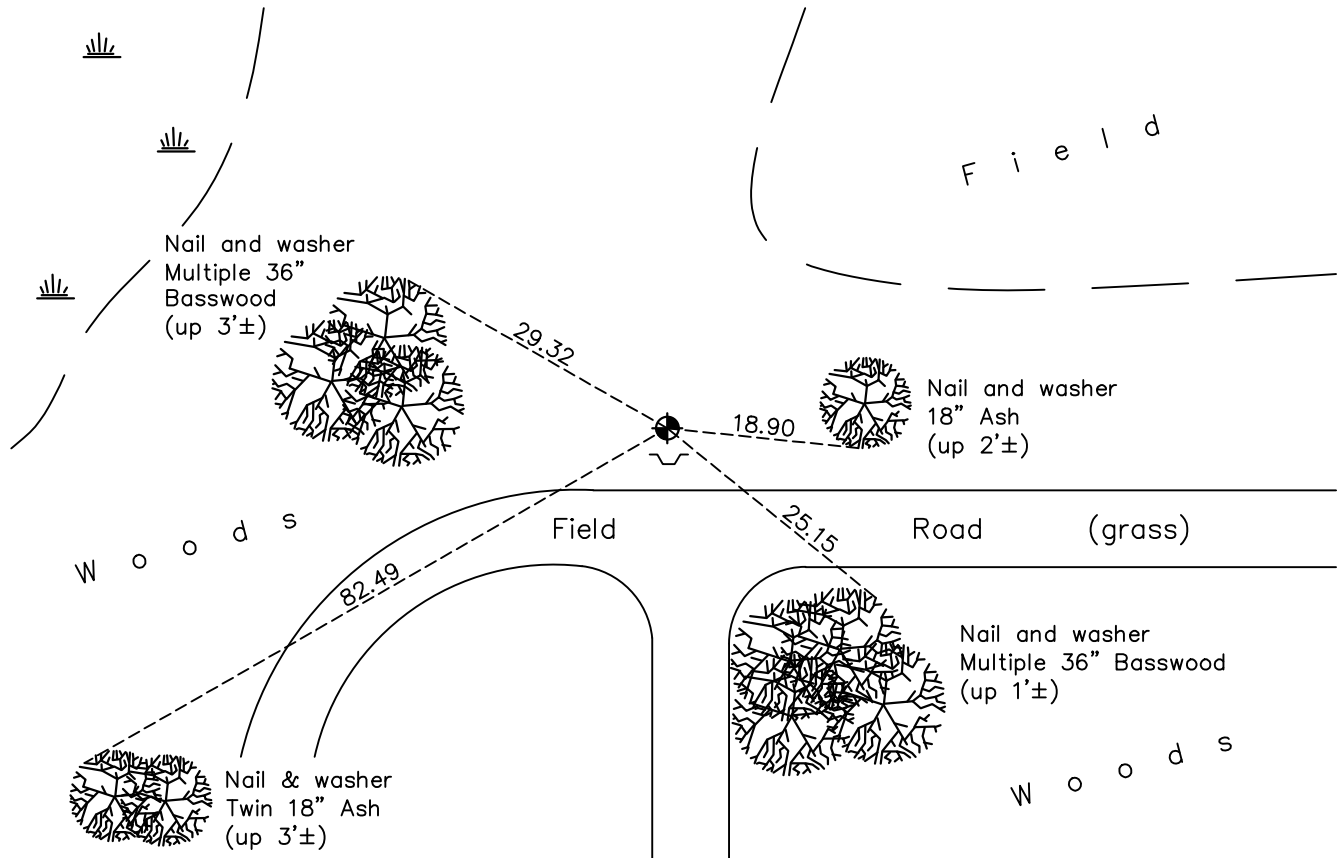
(on south line of section)

On the 28th day of February, 1983, the described corner was evidenced by a 1/2" iron pipe set using area resurvey

and to perpetuate the location of said corner, at the exact location thereof, a permanent marker was placed consisting of a cast iron monument

AND on the 26th day of May, 2023, said permanent marker was found flush to ground under an 18" downed tree with a sign and post on the south side and the ties were updated.

Updated reference ties are as shown below.



Revision Date

5/30/2023

N.A.D. 1983 Coordinates
(1996 Adjustment)

County Project Coordinates

Northing 174721.0438

Easting 552634.8716

Date 1/25/06

I hereby certify that this United States public land survey monument record is correct and complete to the best of my knowledge and belief.

David Zieglmeier Date 6/28/23

David Zieglmeier Anoka County Surveyor

Minnesota License Number 46179

HISTORY OF GOVERNMENT CORNER

Page No. 90A

County of Anoka

State of Minnesota

Witness Corner of Sec. 22 Township 32 Range 22
(on south line of section)

CORNER HISTORY:

February 28, 1983 - Set 1/2" iron pipe using area resurvey. Set sign and post on South side. Established ties to iron pipe.

June 26, 1990 - Found 1/2" iron pipe and updated ties.

January 5, 1993 - Found 1/2" iron pipe and replaced with a cast iron monument flush. Updated ties.

August 18, 1995 - Found cast iron monument and updated ties.

January 25, 2006 - Established NAD 1983 (1996 adj.) Anoka County project coordinates by static GPS methods.

September 25, 2014 - Found cast iron monument and updated ties.

May 26, 2023 - Found cast iron monument flush, verified position by ACS RTK GPS method and updated ties.