

# CERTIFICATE OF LOCATION OF GOVERNMENT CORNER

County of Anoka

State of Minnesota

Witness ✓ Corner of Sec. 1 Township 32 Range 22  
 (on north line of NE1/4)

On the 22nd day of October, 1986, the described corner was evidenced by Area Resurvey

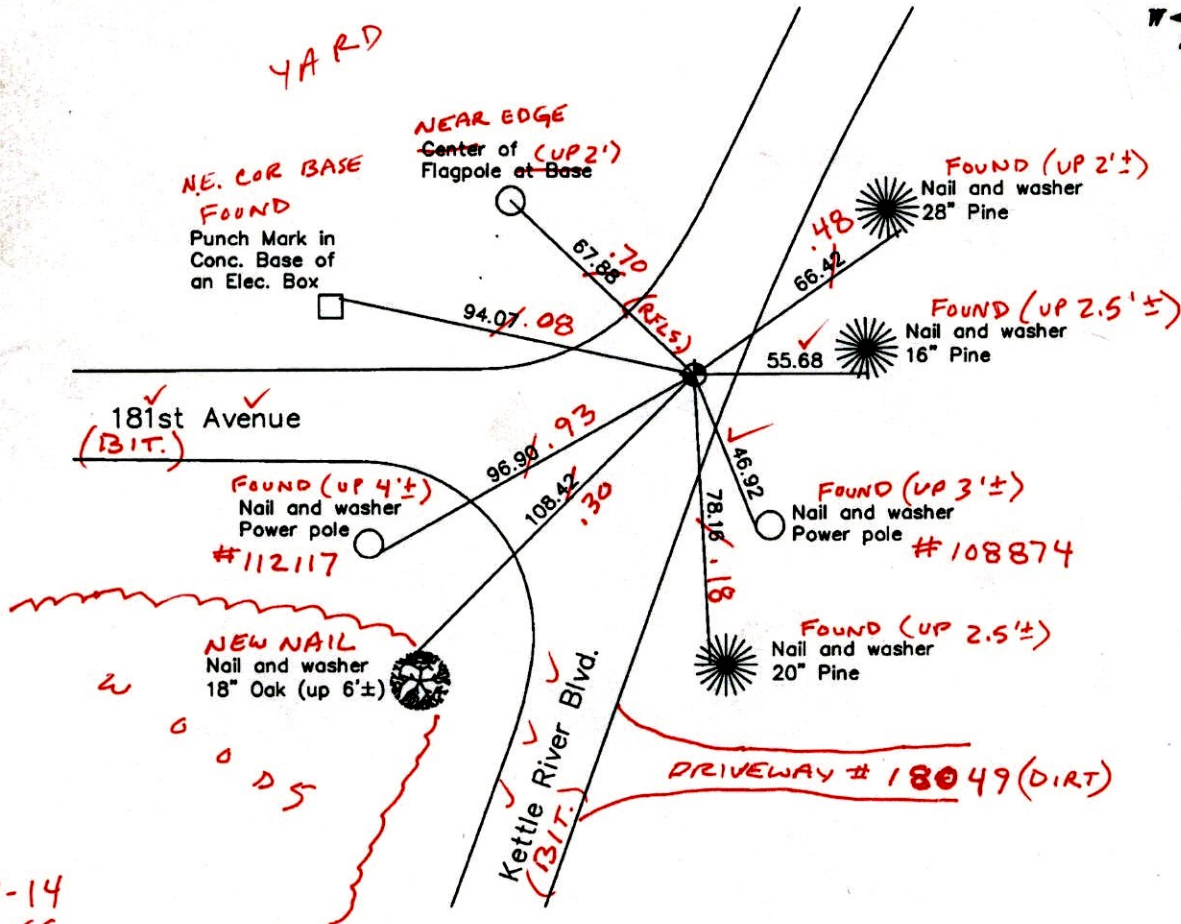
and to perpetuate the location of said corner, at the exact location thereof, a permanent marker was placed consisting of a cast iron monument

~~FOUND DOWN 0.2' ± NEEDS TO BE RAISED~~

BK-SS 10-10-14 RAISED FRESH W/BIT.

AND on the 16th day of October, 2007, said permanent marker was found and the ties were updated.

Updated reference ties are as shown below.



10-7-14  
BK-SS  
TOTAL STA.  
JRS

Revised date	
	8/13/87
	8/10/95
	10/16/07

N.A.D. 1983 Coordinates (1996 Adjustment)	
County Project Coordinates	
Northing	195504.8475
Easting	561479.9004
Date	6/16/03

I hereby certify that this United States public land survey monument record is correct and complete to the best of my knowledge and belief.

*Larry D. Hoium* Date 10/16/07

Larry D. Hoium, Anoka County Surveyor  
Minnesota License Number 18165

3DQ = 0.06 N = 195504.8230 E = 561479.8292

# CERTIFICATE OF LOCATION OF GOVERNMENT CORNER

County of Anoka

State of Minnesota

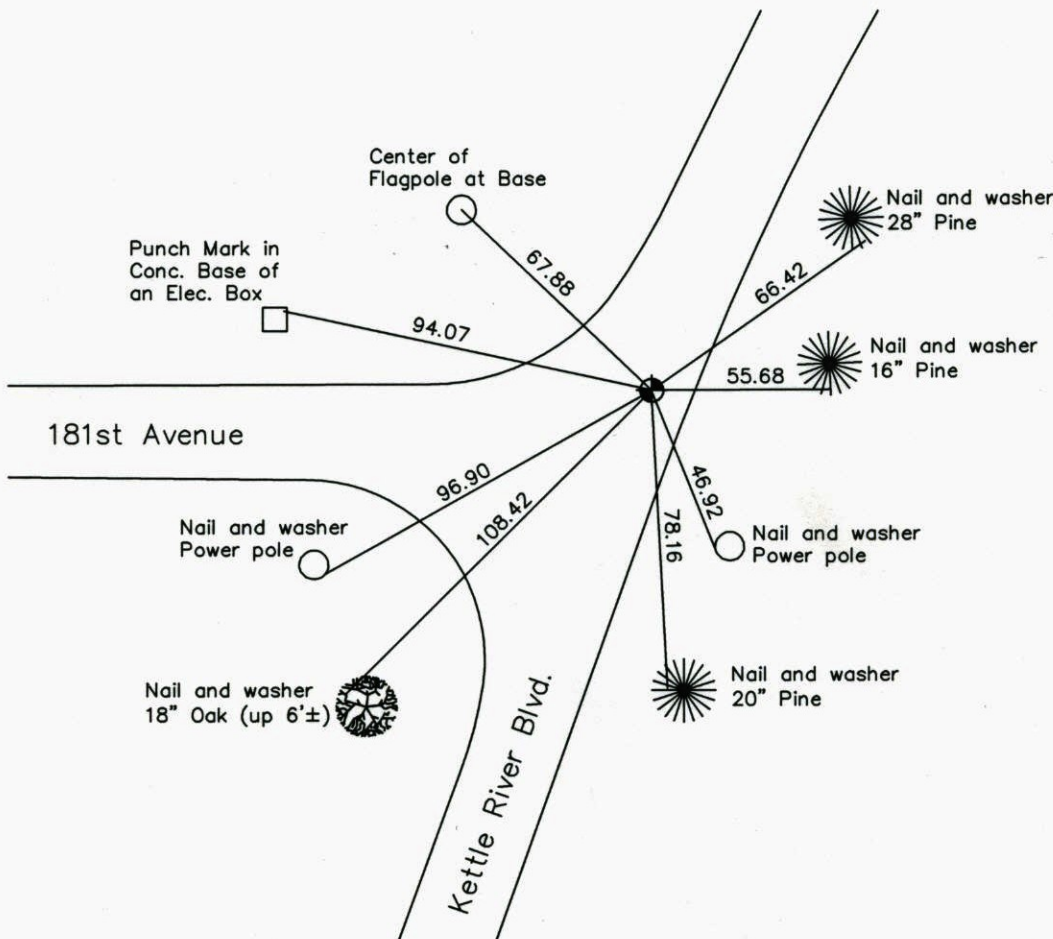
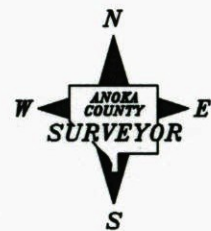
Witness Corner of Sec. 1 Township 32 Range 22  
(on north line of NE1/4)

On the 22nd day of October, 1986, the described corner was evidenced by Area Resurvey

and to perpetuate the location of said corner, at the exact location thereof, a permanent marker was placed consisting of a cast iron monument

AND on the 16th day of October, 2007, said permanent marker was found and the ties were updated.

Updated reference ties are as shown below.



**Revised date**

8/13/87
8/10/95
10/16/07

**N.A.D. 1983 Coordinates  
(1996 Adjustment)**

County Project Coordinates	
Northing	195504.8475
Easting	561479.9004
Date	6/16/03

I hereby certify that this United States public land survey monument record is correct and complete to the best of my knowledge and belief.

*Larry D. Hoium* Date 10/16/07  
Larry D. Hoium, Anoka County Surveyor  
 Minnesota License Number 18165

# CERTIFICATE OF LOCATION OF GOVERNMENT CORNER

County of Anoka

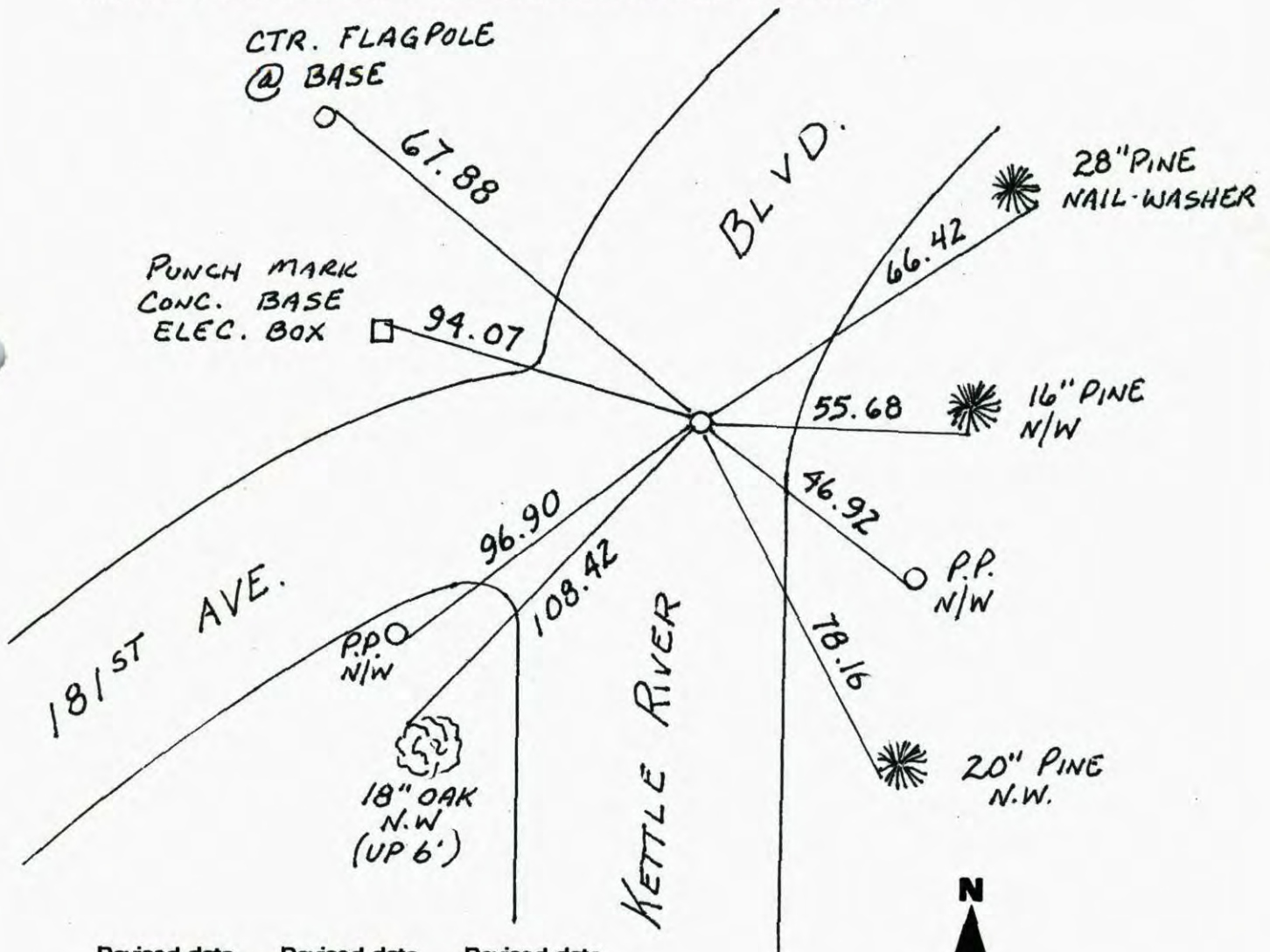
State of Minnesota

W.C. NORTH  
 LINE OF N.E. Corner of Sec. 1 Township 32 Range 22  
 QTR.

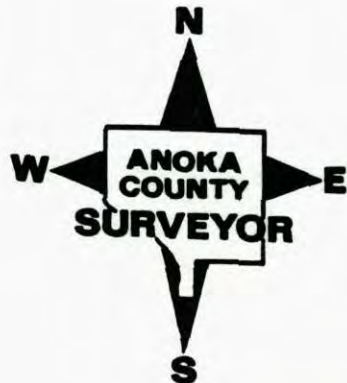
I hereby certify that on the 22 day of OCT., 1986, I found the described corner which was evidenced by AREA RESURVEY

and I further certify that to perpetuate the location of said corner, I did, at the exact location thereof, place a permanent marker consisting of CAST IRON MON.

which reference or witness monuments are located in the manner following:



Revised date	Revised date	Revised date
8-13-87		
8-10-95		
10-16-07		



# CERTIFICATE OF LOCATION OF GOVERNMENT CORNER

County of Anoka

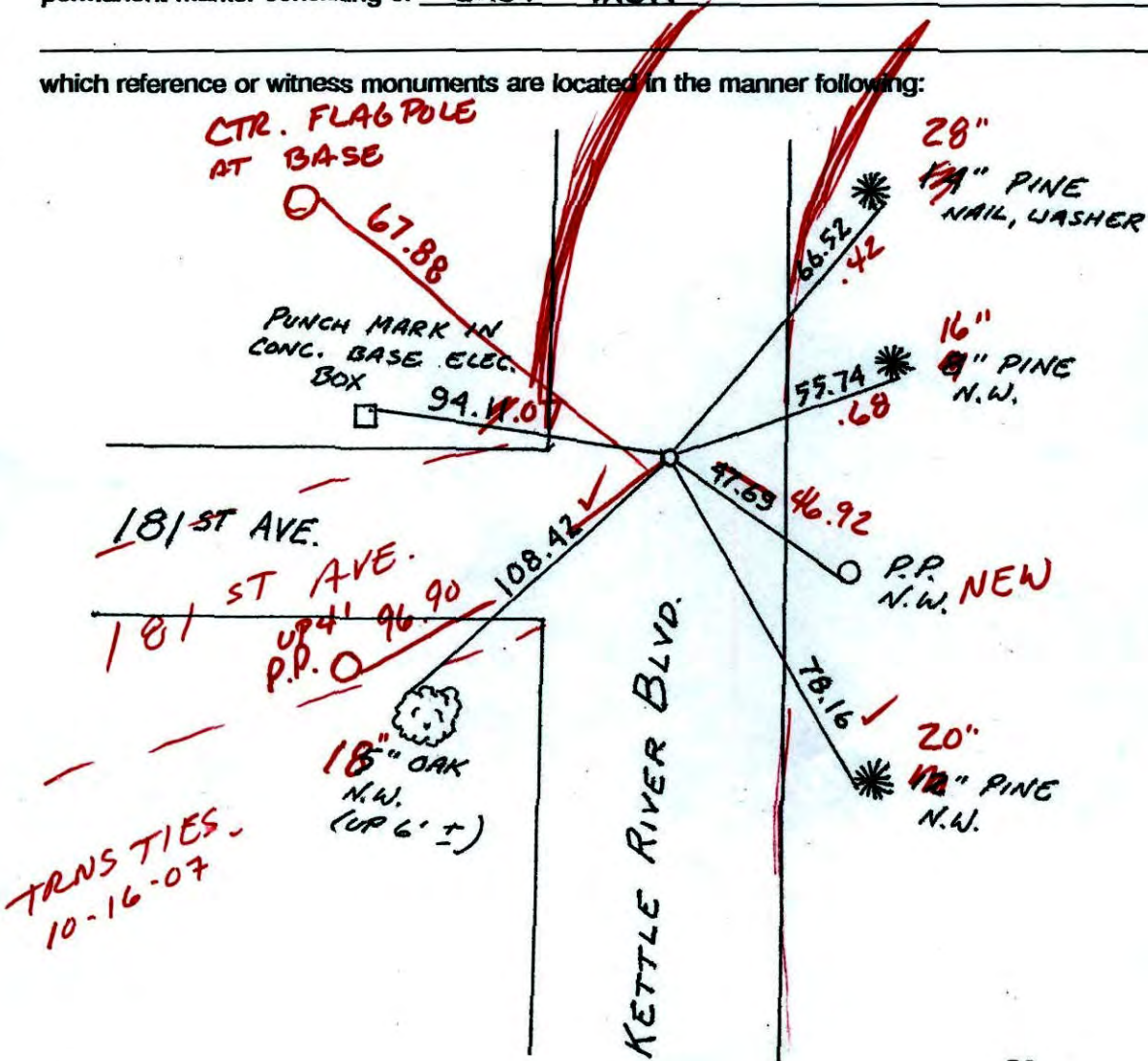
State of Minnesota

W.C. ON NORTH  
 LINE OF NORTH E. Corner of Sec. 1 Township 32 Range 22  
 GTR.

I hereby certify that on the 22 day of OCT., 1986, I found the described corner which was evidenced by AREA RESURVEY

and I further certify that to perpetuate the location of said corner, I did, at the exact location thereof, place a permanent marker consisting of CAST IRON

which reference or witness monuments are located in the manner following:



Revised date	Revised date	Revised date
8-13-87		
8-10-95		

