

# CERTIFICATE OF LOCATION OF GOVERNMENT CORNER

County of Anoka

State of Minnesota

West 1/4 Corner of Sec. 26 Township 32 Range 22

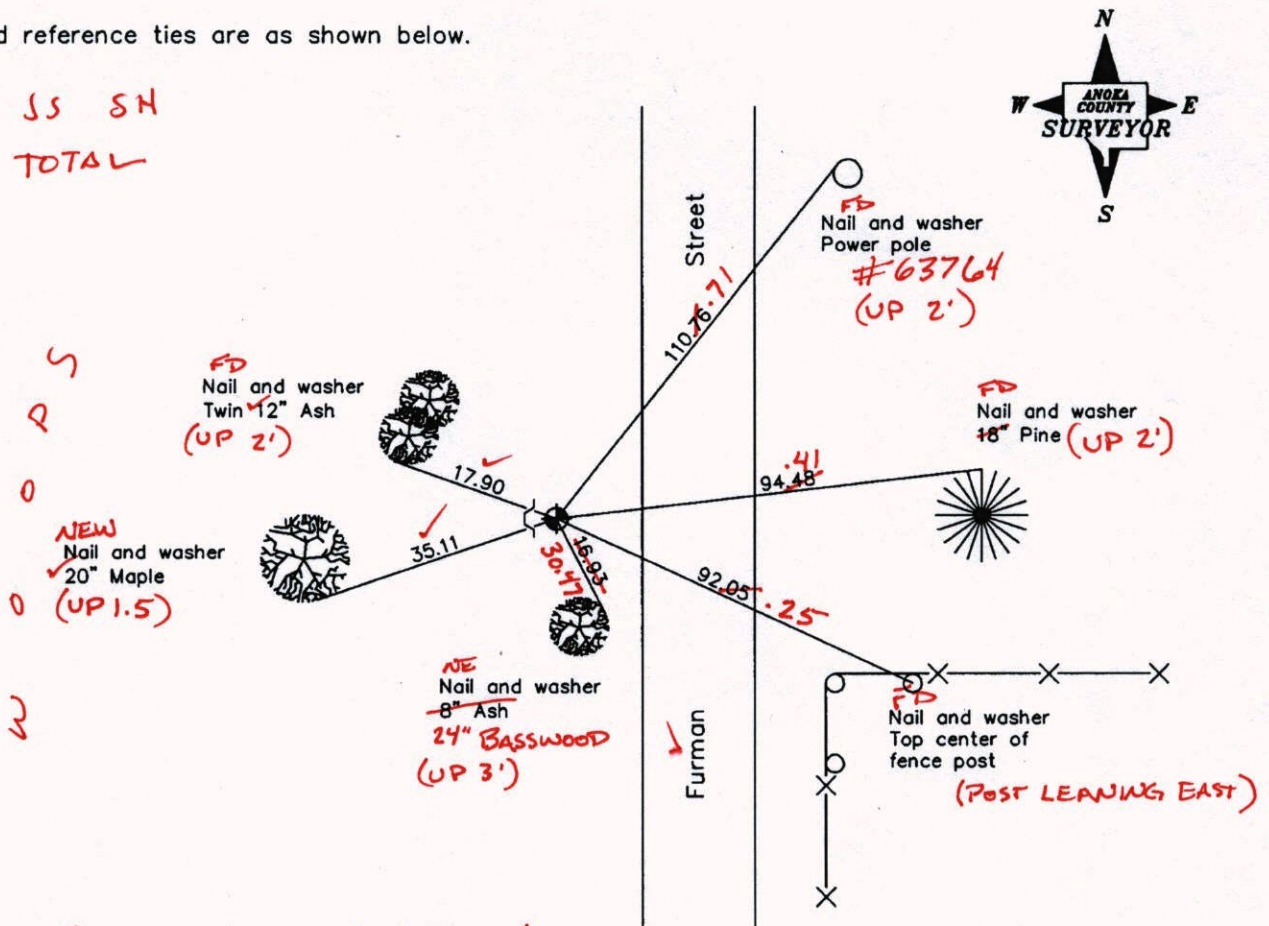
On the 3rd day of July, 1974, the described corner was evidenced by area resurvey

and to perpetuate the location of said corner, at the exact location thereof, a permanent marker was placed consisting of a cast iron monument with a sign and post on the west side

AND on the 6th day of March, 2008, said permanent marker was found and the ties were updated (CIM UP 0.1')

Updated reference ties are as shown below.

9.24-14 SS SH  
TIED W/ TOTAL  
64°



★ UNABLE TO VRS DUE TO TREE COVER ★

Revised date
6/13/90
8/18/95
3/06/08

N.A.D. 1983 Coordinates (1996 Adjustment)	
County Project Coordinates	
Northing	172094.8209
Easting	553176.7601
Date	5/13/04

I hereby certify that this United States public land survey monument record is correct and complete to the best of my knowledge and belief.

*Larry D. Holium* Date 3/06/08

Larry D. Holium, Anoka County Surveyor

Minnesota License Number 18165

# CERTIFICATE OF LOCATION OF GOVERNMENT CORNER

County of Anoka

State of Minnesota

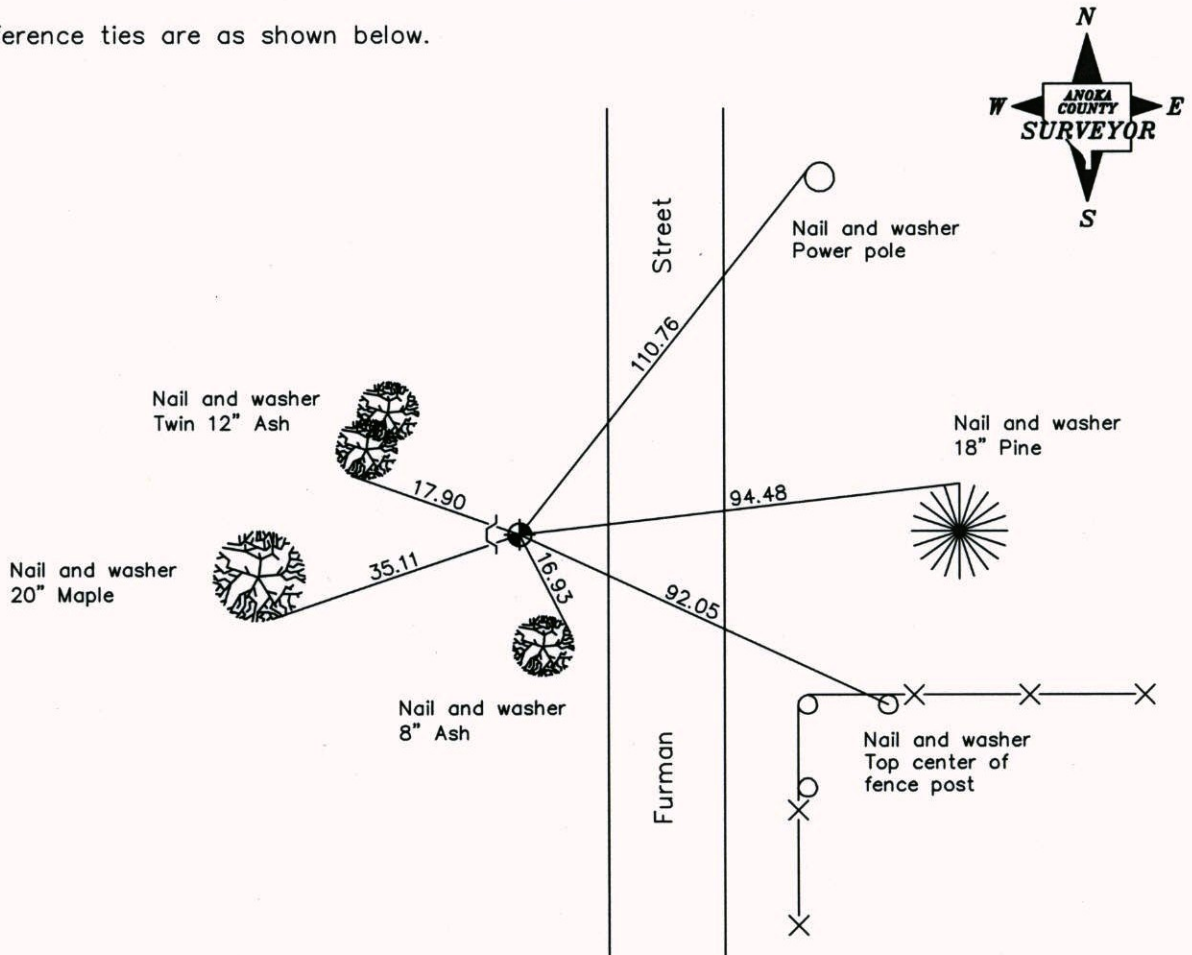
West 1/4 Corner of Sec. 26 Township 32 Range 22

On the 3rd day of July, 1974, the described corner was evidenced by area resurvey

and to perpetuate the location of said corner, at the exact location thereof, a permanent marker was placed consisting of a cast iron monument with a sign and post on the west side

AND on the 6th day of March, 2008, said permanent marker was found and the ties were updated

Updated reference ties are as shown below.



Revised date
6/13/90
8/18/95
3/06/08

N.A.D. 1983 Coordinates (1996 Adjustment)	
County Project Coordinates	
Northing	<u>172094.8209</u>
Easting	<u>553176.7601</u>
Date	<u>5/13/04</u>

I hereby certify that this United States public land survey monument record is correct and complete to the best of my knowledge and belief.

*Larry D. Hoium* Date 3/06/08

\_\_\_\_\_  
Larry D. Hoium, Anoka County Surveyor

Minnesota License Number 18165



# CERTIFICATE OF LOCATION OF GOVERNMENT CORNER

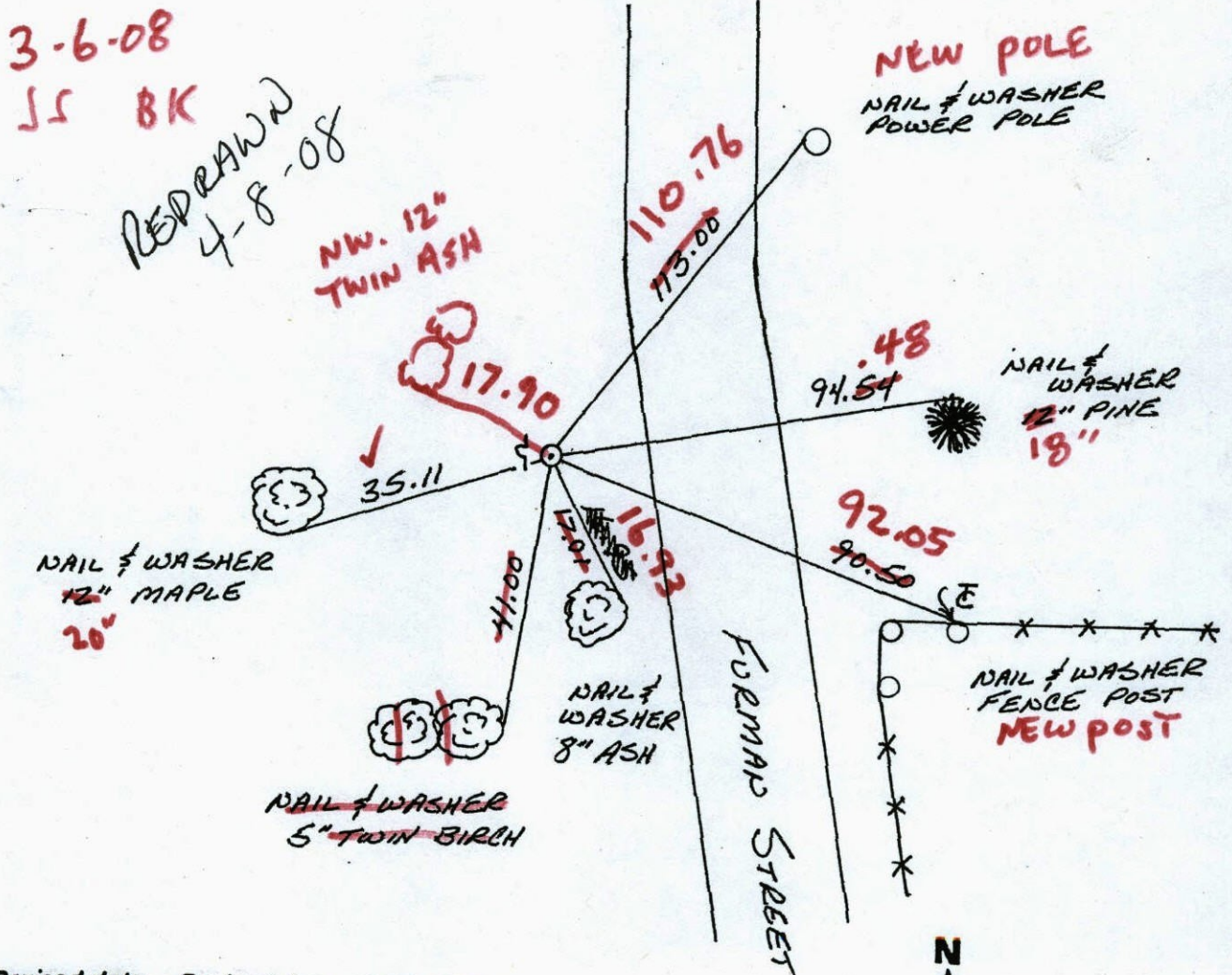
County of Anoka

State of Minnesota

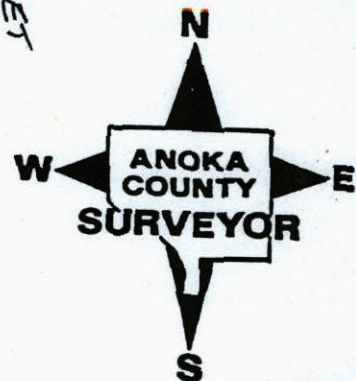
WEST 1/4 Corner of Sec. 26 Township 32 Range 22

I hereby certify that on the 3 day of JULY, 1974, I found the described corner which was evidenced by AREA RESURVEY

and I further certify that to perpetuate the location of said corner, I did, at the exact location thereof, place a permanent marker consisting of CAST IRON MONUMENT WITH SIGN AND POST ON THE WEST SIDE which reference or witness monuments are located in the manner following:



Revised date	Revised date	Revised date
7-3-74		
8-11-76		
8-2-79		
7-14-82		
8-7-85		
6-13-90		
8-18-95		





# CERTIFICATE OF LOCATION OF GOVERNMENT CORNER

County of Anoka

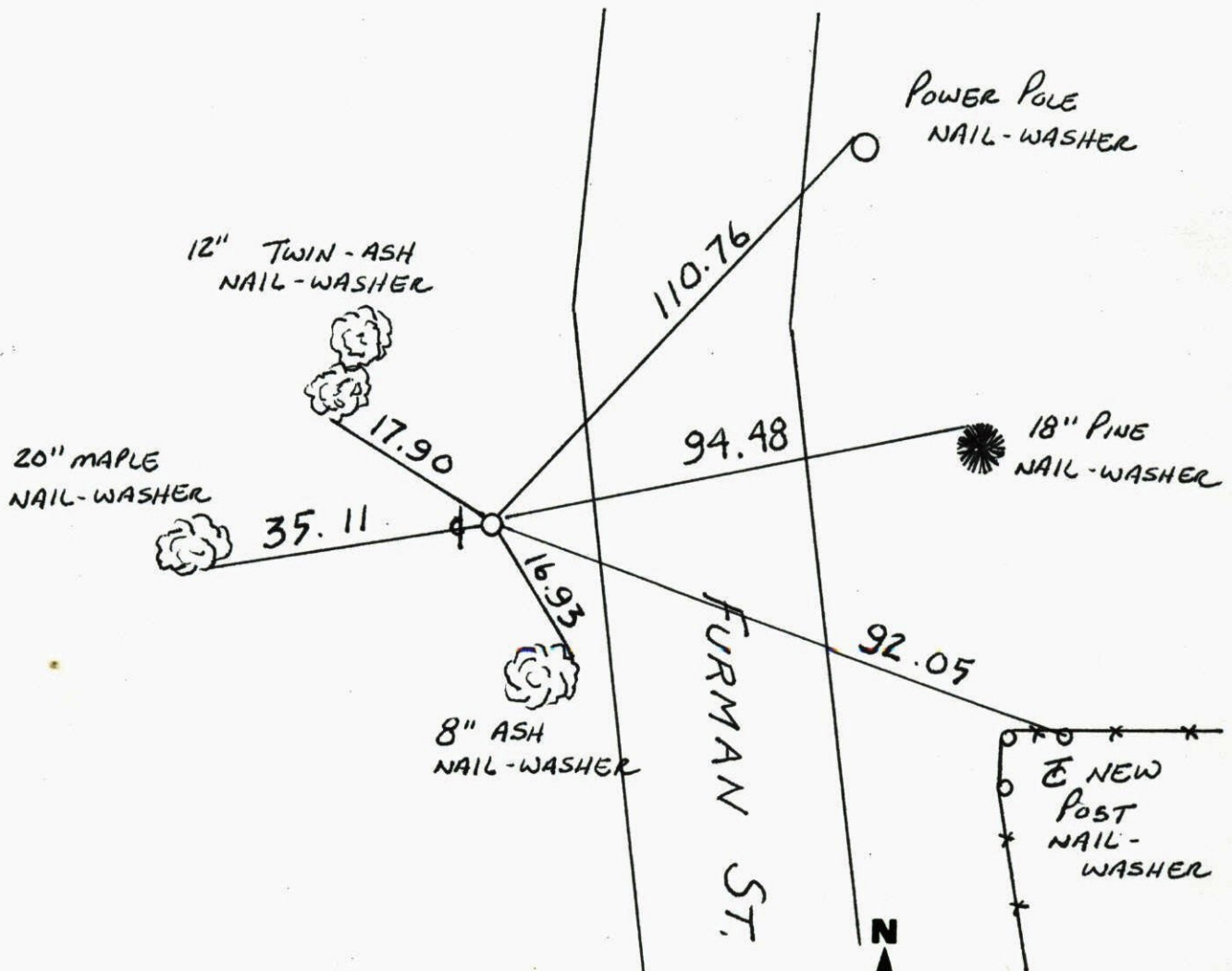
State of Minnesota

WEST 1/4 Corner of Sec. 26 Township 32 Range 22

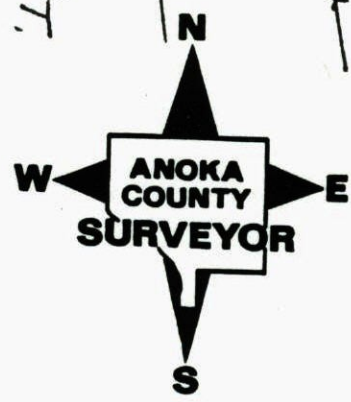
I hereby certify that on the 3 day of JULY, 1974, I found the described corner which was evidenced by AREA RESURVEY

and I further certify that to perpetuate the location of said corner, I did, at the exact location thereof, place a permanent marker consisting of CAST IRON MON'T. WITH SIGN AND POST ON WEST SIDE

which reference or witness monuments are located in the manner following:



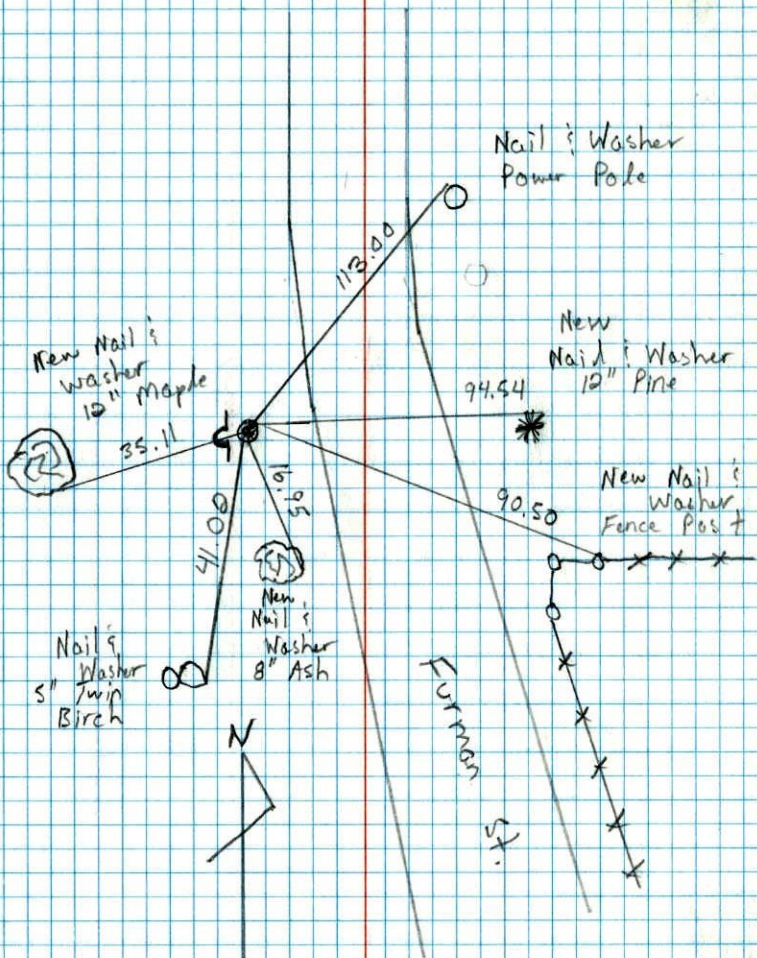
Revised date	Revised date	Revised date
7-3-74	3-6-08	
8-11-76		
8-2-79		
7-14-82		
8-7-85		
6-13-90		
8-18-95		





West 1/4 Corner Sec. 26 T30 R22

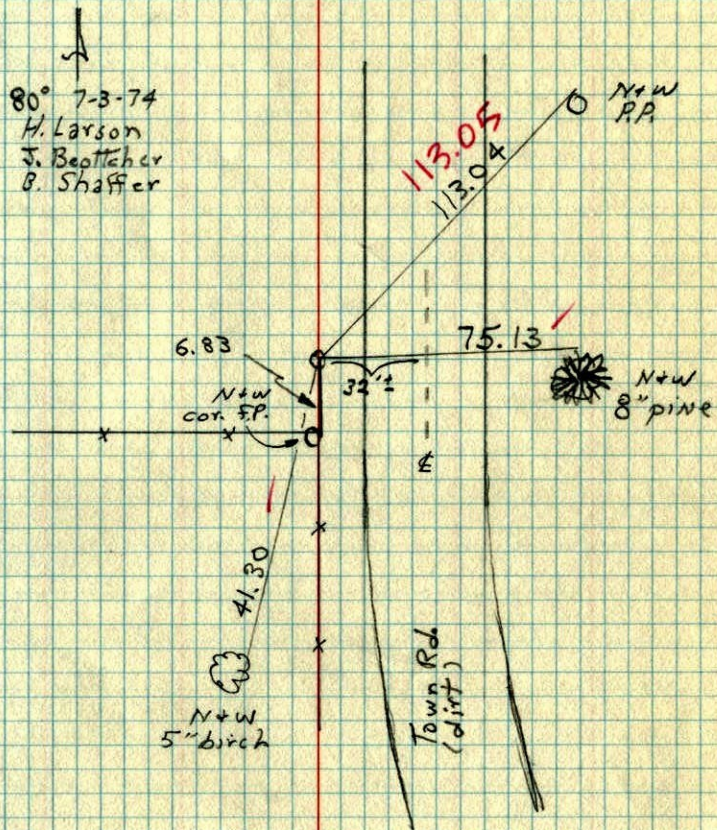
Retied Cast Iron Monument and  
Put in Sign & Post



6-13-90  
M. Zimmerman  
D. Klersy

W 1/4 Cor. Sec. 26 T32 R22

Set cast iron monument from  
area resurvey C.I. Flush.

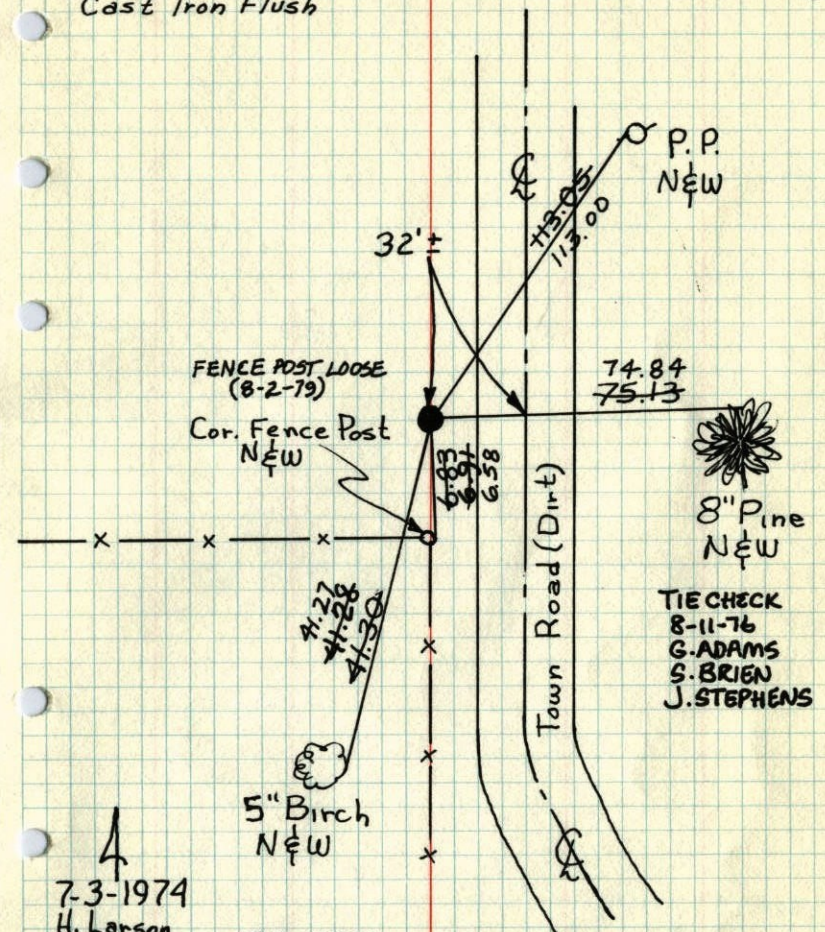


80° 7-3-74  
H. Larson  
J. Beattcher  
B. Shaffer



# W 1/4 Cor. Sec. 26 - T32-R22

Set Cast Iron Monument From Area Resurvey  
Cast Iron Flush



4  
 7-3-1974  
 H. Lanson  
 J. Boettcher  
 B. Schaffer  
 Temp. 80°  
 Tape #1A

TIE CHECK  
 8-2-79  
 B. STEPHENS  
 D. STEPHENS  
 P. ROSS  
 TAPE #2  
 TEMP. 88°

**ROLAND W. ANDERSON**  
 COUNTY SURVEYOR  
 ANOKA COUNTY, MINNESOTA

**TEMPERATURE CORRECTED  
 AND HORIZONTALLY  
 TAPED MEASUREMENTS**