

CERTIFICATE OF LOCATION OF GOVERNMENT CORNER

County of Anoka

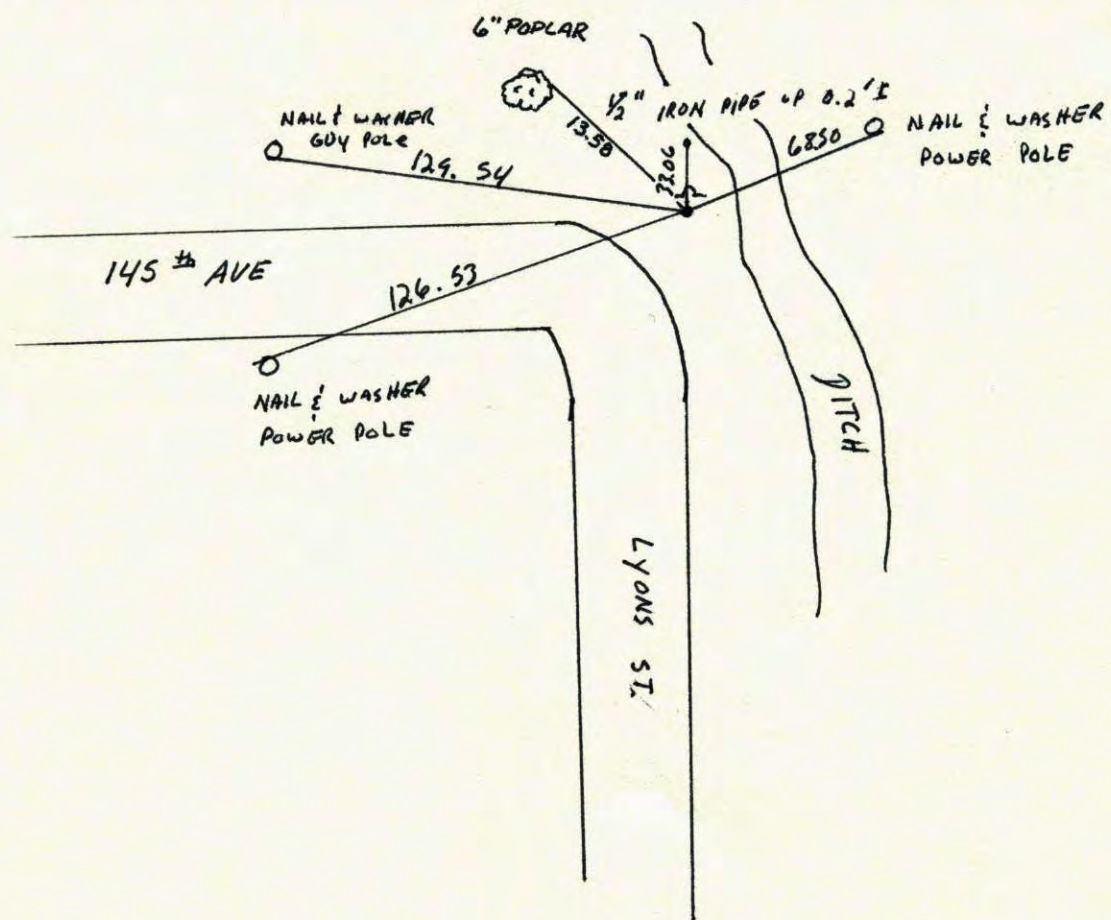
State of Minnesota

EAST ONE QUARTER Corner of Sec. 25 Township 32 Range 22

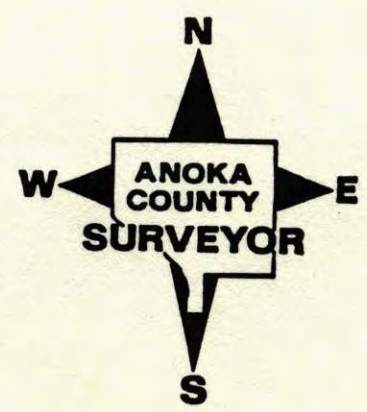
I hereby certify that on the 18 day of September, 1964, I found the described corner which was evidenced by 3/4" IRON PIPE set by Don Hult

and I further certify that to perpetuate the location of said corner, I did, at the exact location thereof, place a permanent marker consisting of Cast IRON monument SIGN AND POST ON NORTH SIDE

which reference or witness monuments are located in the manner following:

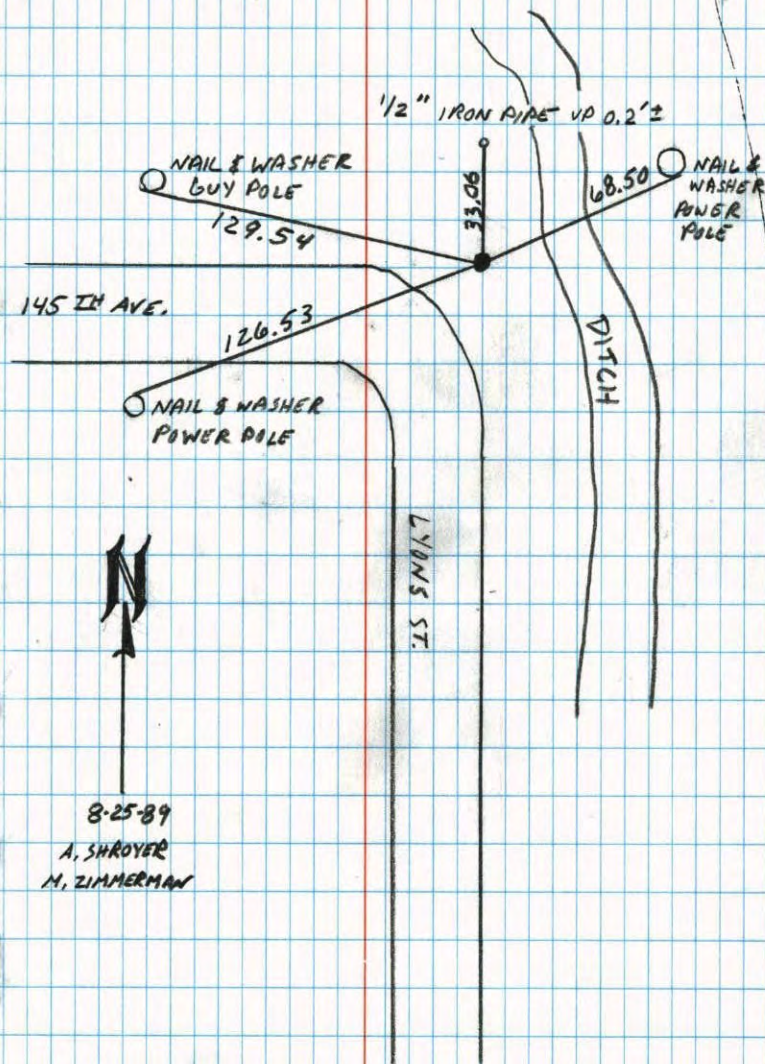


Revised date	Revised date	Revised date
8-11-76		
8-2-79		
7-8-82		
8-9-85		
8-25-89		
11-30-92		
8-25-95		



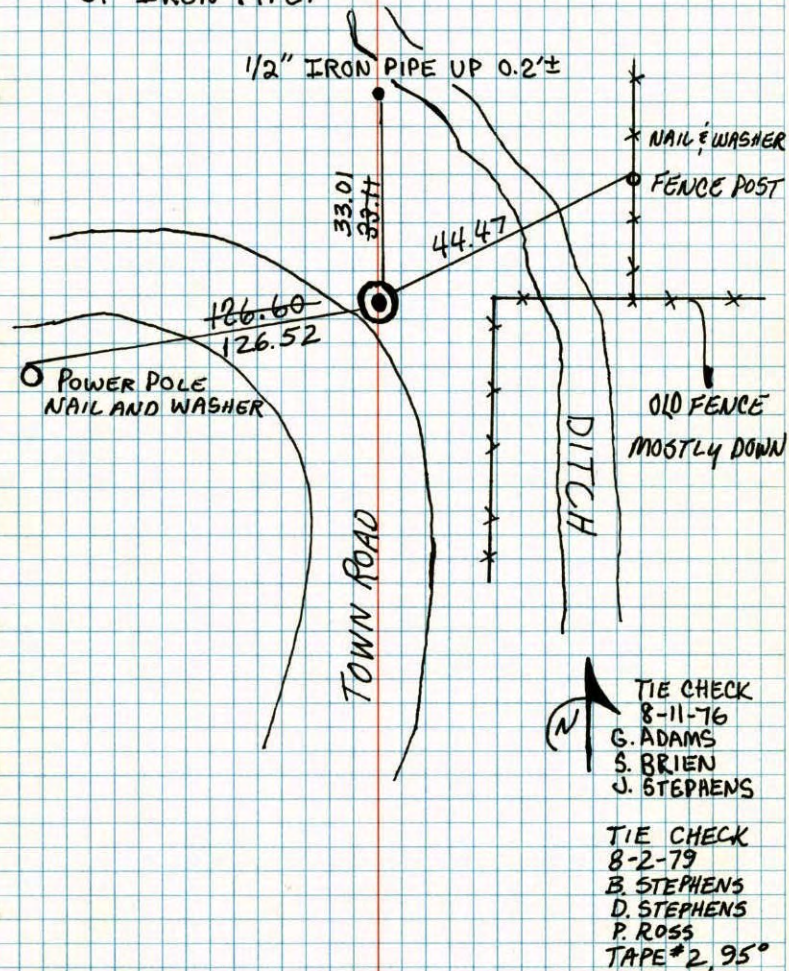
EAST 1/4 CORNER SEC. 25 T. 32 R. 22

RETIED LAST IRON MONUMENT.



E 1/4 CORNER SEC. 25 T. 32 R. 22

FOUND 3/4" IRON PIPE FLUSH, SET BY DON HULT. SET CAST IRON MONUMENT IN PLACE OF IRON PIPE.

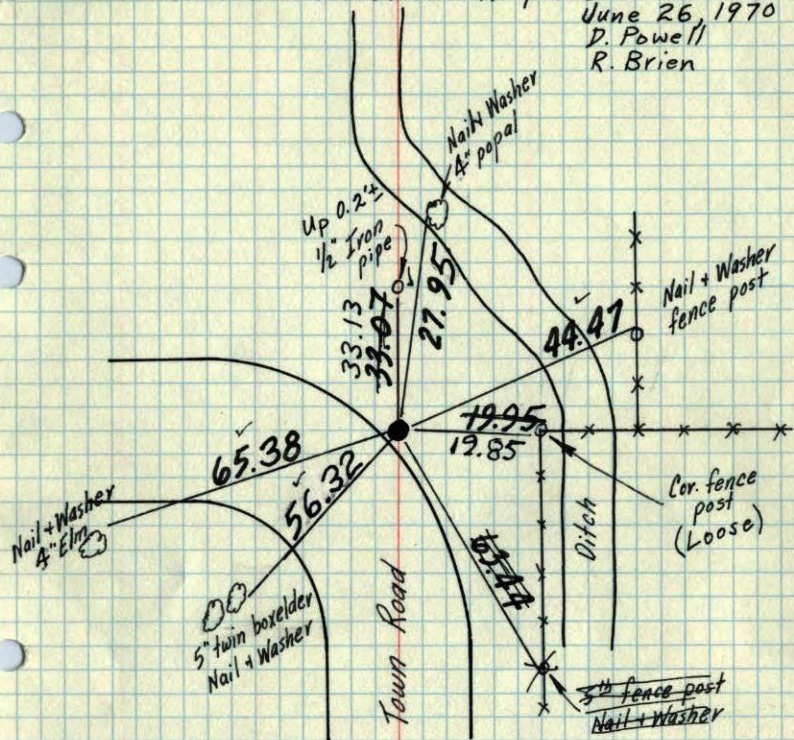


TEMPERATURE CORRECTED ROLAND W. ANDERSON
AND HORIZONTALLY COUNTY SURVEYOR
TAPED MEASUREMENTS ANOKA COUNTY, MINNESOTA

E 1/4 Cor. Sec. 25, T. 32, R. 22

Found 3/4" Iron Pipe flush set by Don Hull

Set Cast Iron Monument in place of I.P.
June 26, 1970
D. Powell
R. Brien



Tie Check
June 11, 1973
B. Olson
D. Brien
D. Farmer

SEE NEW TIES!

Sept. 18, 64

M. D. Anderson
J. Oliver
G. Mills

TEMPERATURE CORRECTED
AND HORIZONTALLY
TAPED MEASUREMENTS

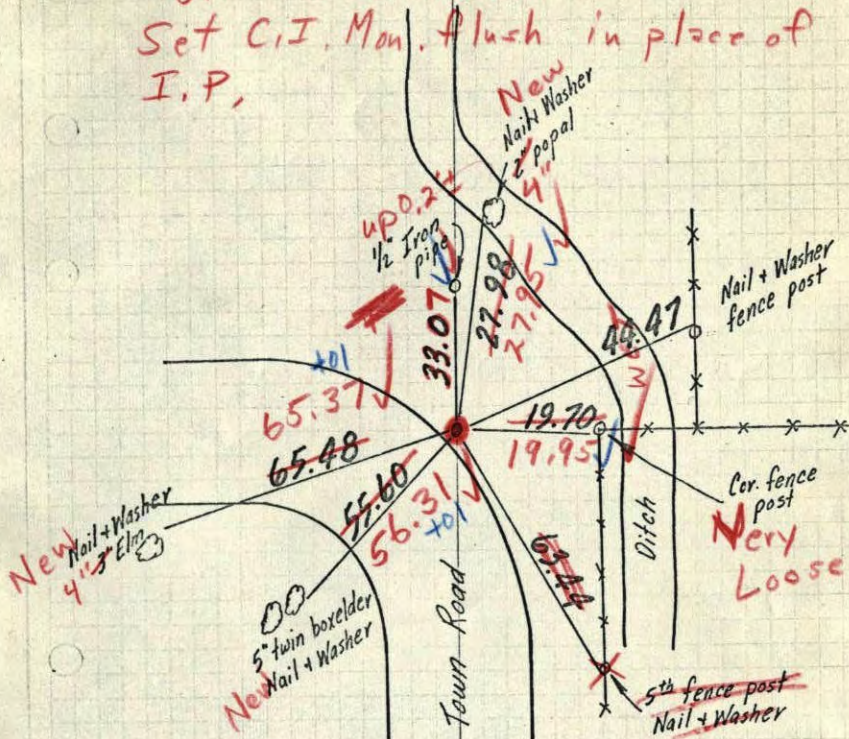
ROLAND W. ANDERSON
COUNTY SURVEYOR
ANOKA COUNTY, MINNESOTA

X X

E 1/4 Cor. Sec. 25, T. 32, R. 22

Found 3/4" Iron Pipe flush set by Don Hull
old ties checked.

Set C.I. Mon. flush in place of I.P.



6/25/70
#10-750
D. Powell
R. Brien

Sept. 18, 64

M. D. Anderson
J. Oliver
G. Mills

TEMPERATURE CORRECTED
AND HORIZONTALLY
TAPED MEASUREMENTS

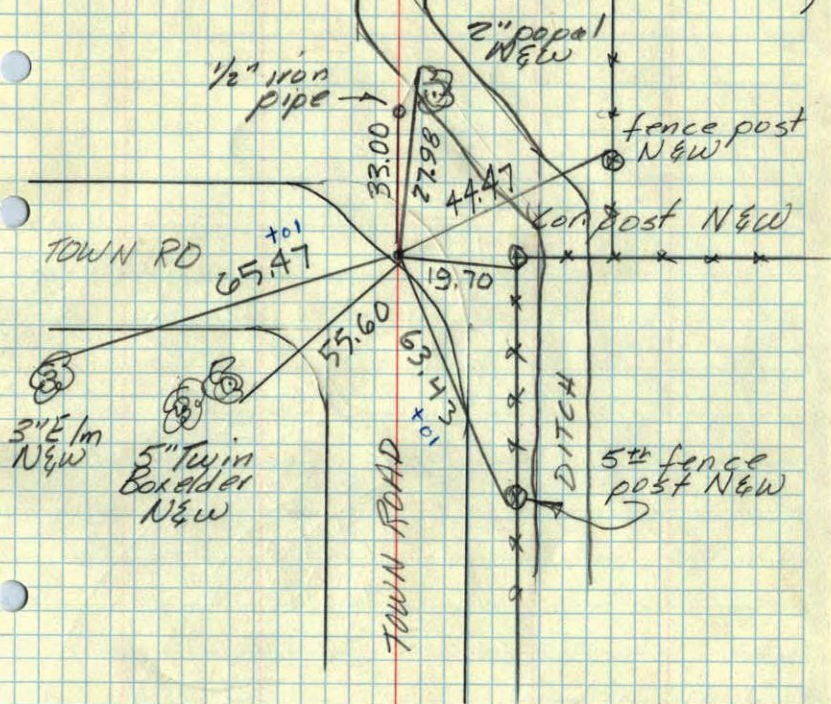
ROLAND W. ANDERSON
COUNTY SURVEYOR
ANOKA COUNTY, MINNESOTA

E 1/4 Cor. Sec. 25-T32-R22

found 3/4" iron pipe flush
believe set by M.R.L.S. #6617

#6617 is Don Holt

(found tie disks with
the No 6617 on them)



Sept. 18, 1964

M.D. Anderson

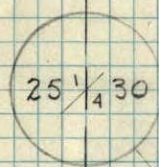
J. Oliver

G. Mills

Temp. 70°

Tape #1

East 1/4 Corner Sec 25-32-22



R22W R21W

T32N

T32 R22

