

CERTIFICATE OF LOCATION OF GOVERNMENT CORNER
 County of Anoka State of Minnesota

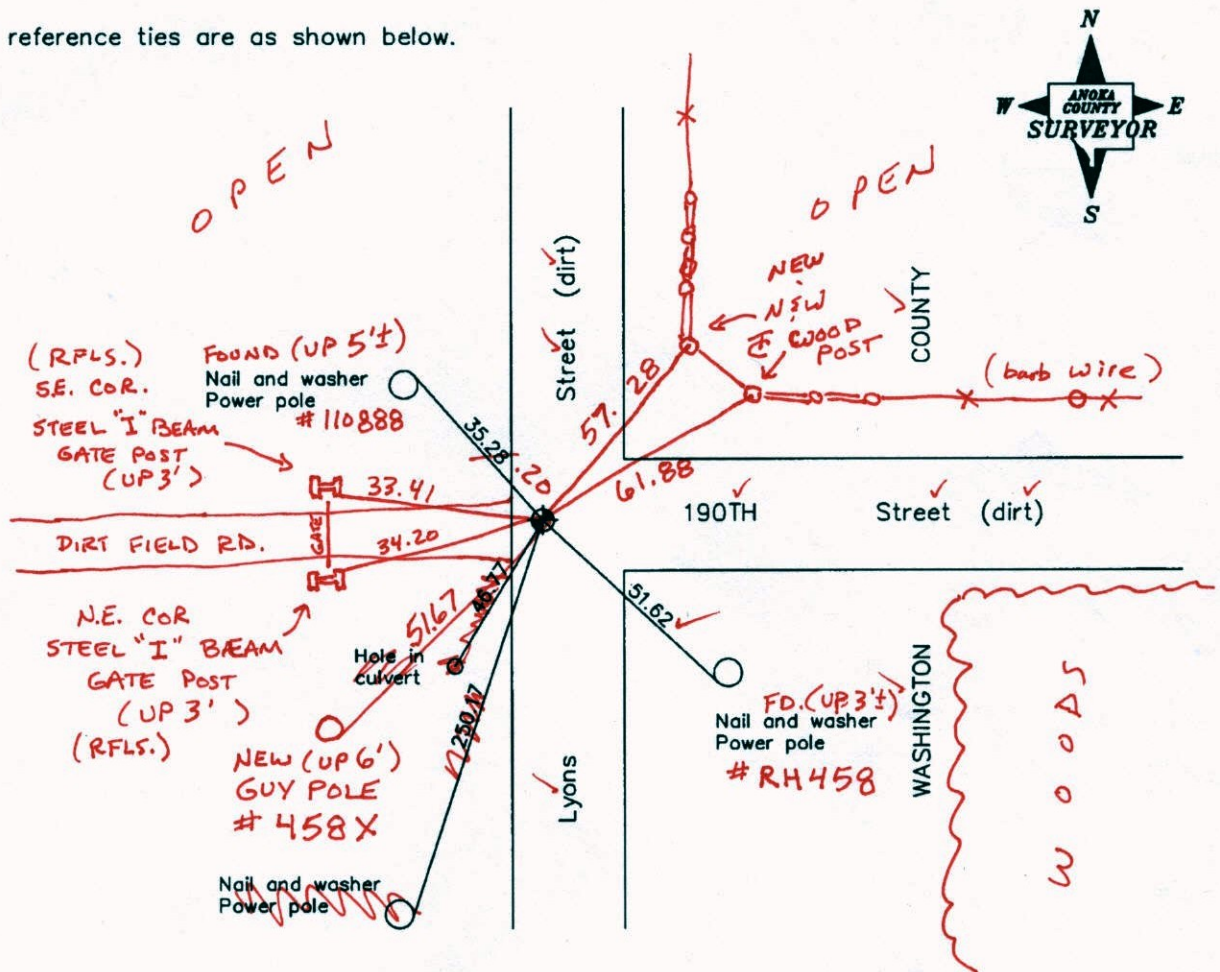
Northeast Corner of Sec. 36 Township 32 Range 22

On the 4th day of June, 1964, the described corner was evidenced by a bent 1" iron pipe

and to perpetuate the location of said corner, at the exact location thereof, a permanent marker was placed consisting of a cast iron monument down ^{1 1/2} 2'± (MON. 3'± W. OF E)

AND on the 8th day of April, 2008, said permanent marker was found and the ties were updated

Updated reference ties are as shown below.



9-17-14
 BK-55
 TOTAL STA.

VRS Revised date

8/24/89
8/25/95
4/08/08

N.A.D. 1983 Coordinates
 (1996 Adjustment)

County Project Coordinates	
Northing	169367.1942
Easting	563657.0913
Date	6/18/03

I hereby certify that this United States public land survey monument record is correct and complete to the best of my knowledge and belief.

Larry D. Hoium Date 4/08/08
 Larry D. Hoium, Anoka County Surveyor
 Minnesota License Number 18165

VRS

3DQ = 0.04 N = 169367.1621 E = 563657.0063

CERTIFICATE OF LOCATION OF GOVERNMENT CORNER

County of Anoka

State of Minnesota

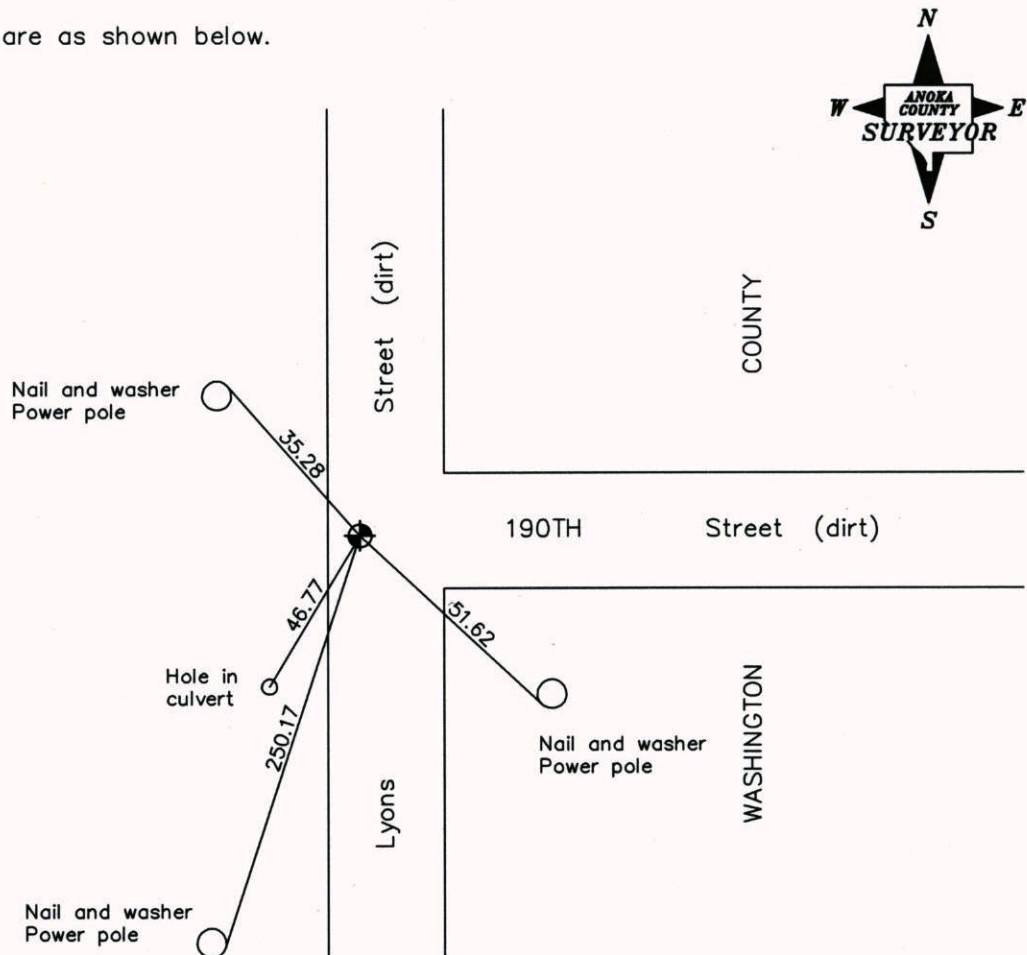
Northeast Corner of Sec. 36 Township 32 Range 22

On the 4th day of June, 1964, the described corner was evidenced by a bent 1" iron pipe

and to perpetuate the location of said corner, at the exact location thereof, a permanent marker was placed consisting of a cast iron monument down 2'±

AND on the 8th day of April, 2008, said permanent marker was found and the ties were updated

Updated reference ties are as shown below.



Revised date

8/24/89
8/25/95
4/08/08

N.A.D. 1983 Coordinates
(1996 Adjustment)

County Project Coordinates
Northing <u>169367.1942</u>
Easting <u>563657.0913</u>
Date <u>6/18/03</u>

I hereby certify that this United States public land survey monument record is correct and complete to the best of my knowledge and belief.

Larry D. Hoium Date 4/08/08
 _____, Anoka County Surveyor
 Minnesota License Number 18165

CERTIFICATE OF LOCATION OF GOVERNMENT CORNER

County of Anoka

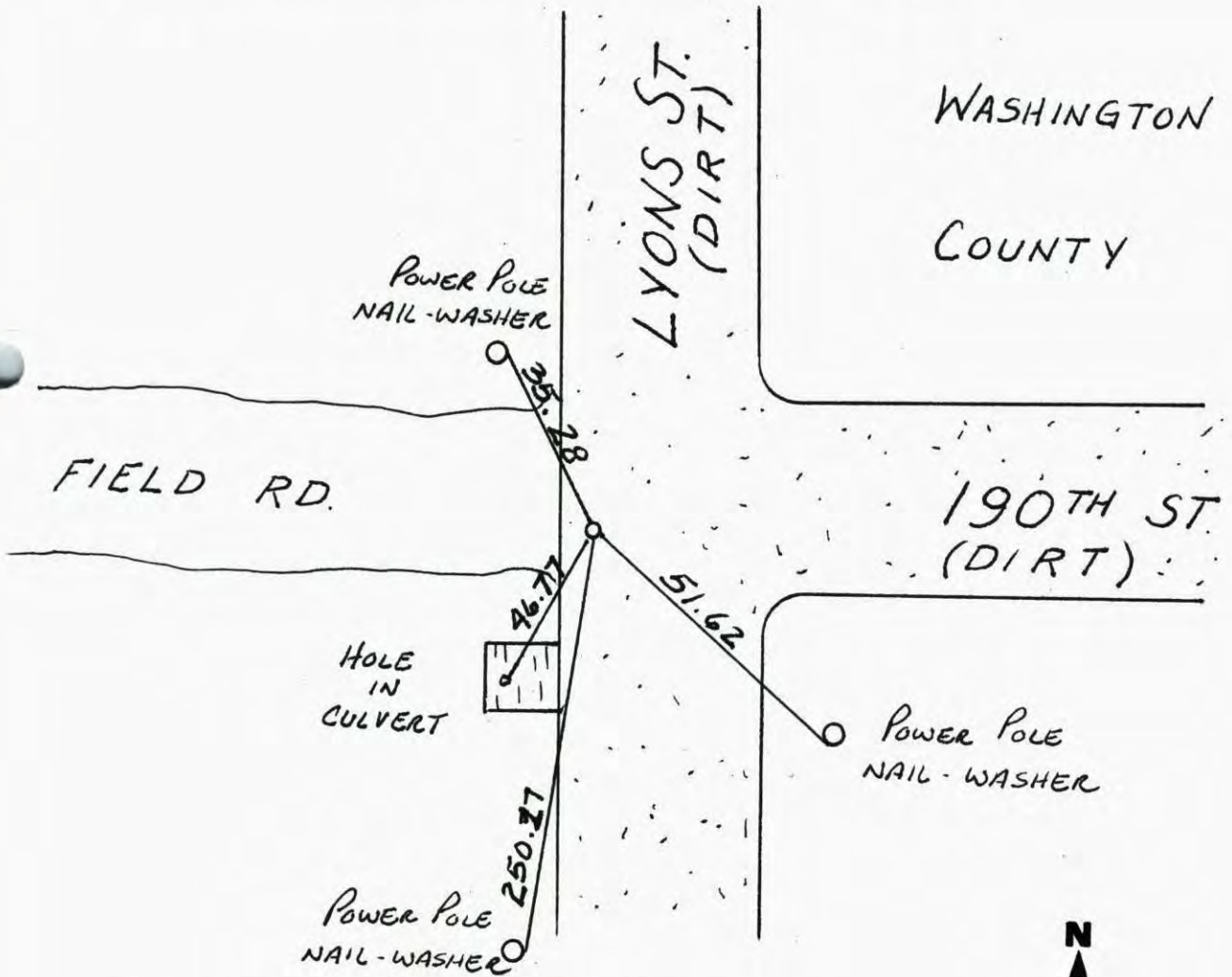
State of Minnesota

NORTHEAST Corner of Sec. 36 Township 32 Range 22

I hereby certify that on the 4 day of JUNE, 1964, I found the described corner which was evidenced by BENT 1" IRON PIPE

and I further certify that to perpetuate the location of said corner, I did, at the exact location thereof, place a permanent marker consisting of SOLID CAST IRON MON. (DOWN 2' +/-)

which reference or witness monuments are located in the manner following:



Revised date	Revised date	Revised date
8-11-76		
8-2-79		
7-8-82		
8-9-85		
8-24-89		
8-25-95		
4-8-08		



CERTIFICATE OF LOCATION OF GOVERNMENT CORNER

County of Anoka

State of Minnesota

NORTH EAST Corner of Sec. 36 Township 32 Range 22

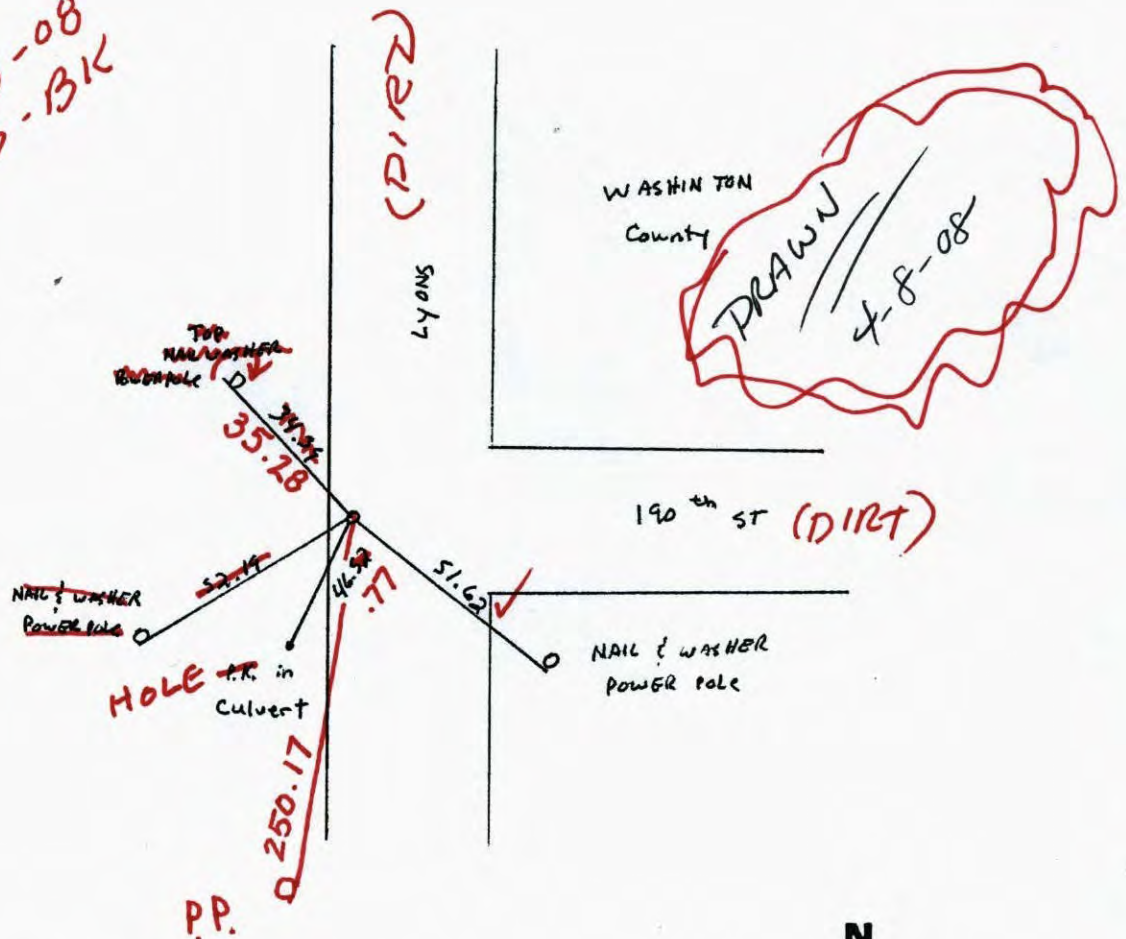
I hereby certify that on the 4 day of June, 1964, I found the described corner which was evidenced by bent 1" iron pipe

and I further certify that to perpetuate the location of said corner, I did, at the exact location thereof, place a permanent marker consisting of Cast iron monument

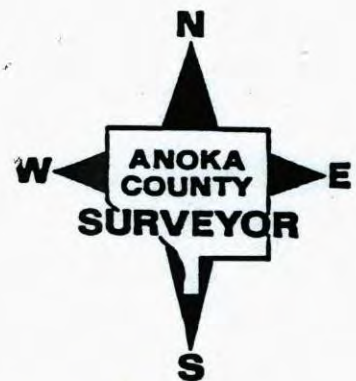
(DOWN 2' ±)

which reference or witness monuments are located in the manner following:

TT.
4-8-08
JS-BIK

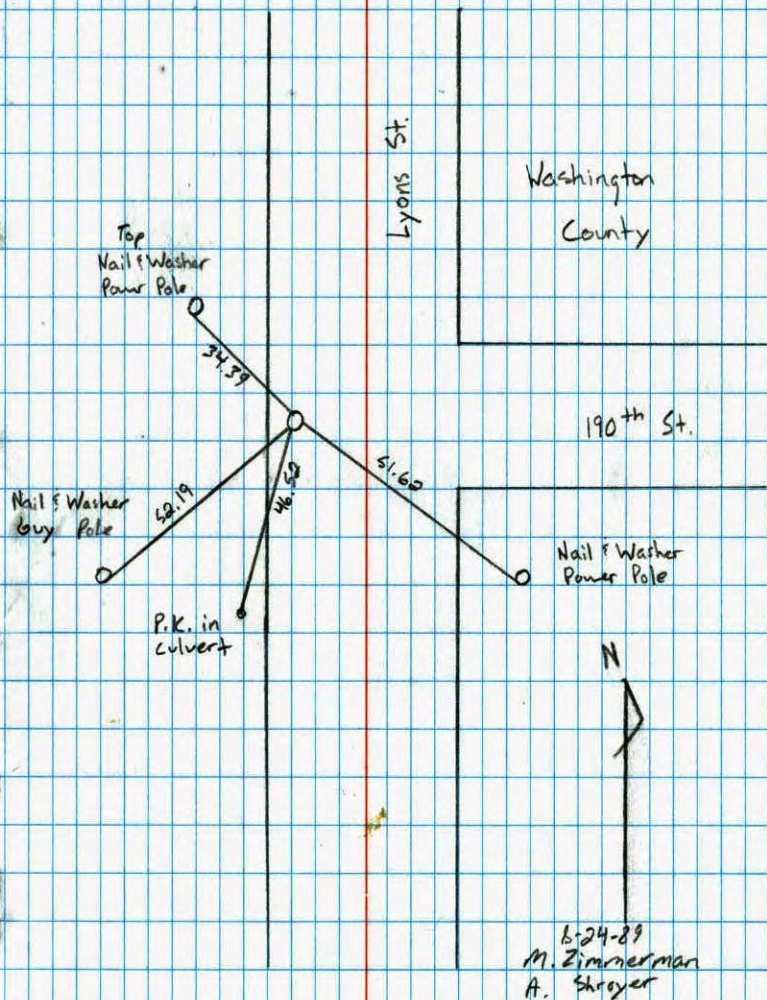


Revised date	Revised date	Revised date
8-11-76		
8-2-79		
7-8-82		
8-9-85		
8-24-89		
8-25-95		



Northeast Corner Sec. 36 T32 R22

Retied Cast Iron Monument

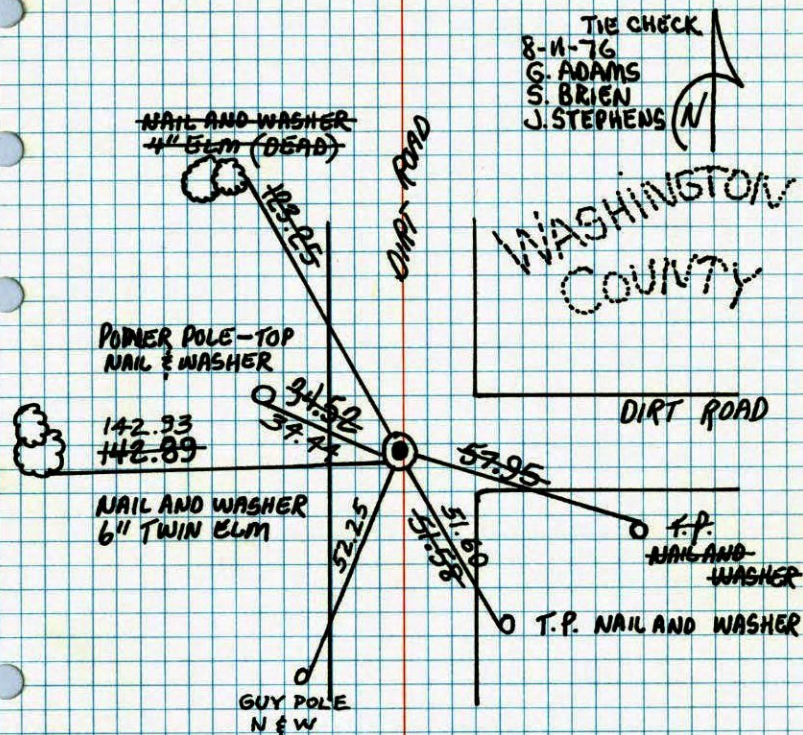


NO. 446

TELEPHONE

N.E. COR. SECTION 36 T.32 R.22

CAST IRON IN PLACE DOWN 0.4'±.



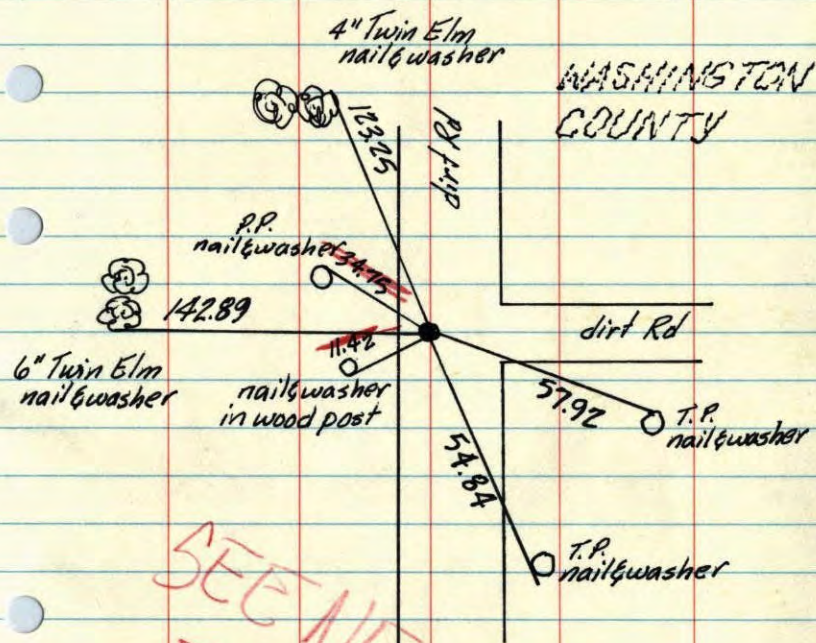
TIE CHECK
8-2-79
B. STEPHENS
D. STEPHENS
P. ROSS
TAPE # 2, 95°

TEMPERATURE CORRECTED ROLAND W. ANDERSON
AND HORIZONTALLY
TAPED MEASUREMENTS

COUNTY SURVEYOR
ANOKA COUNTY, MINNESOTA

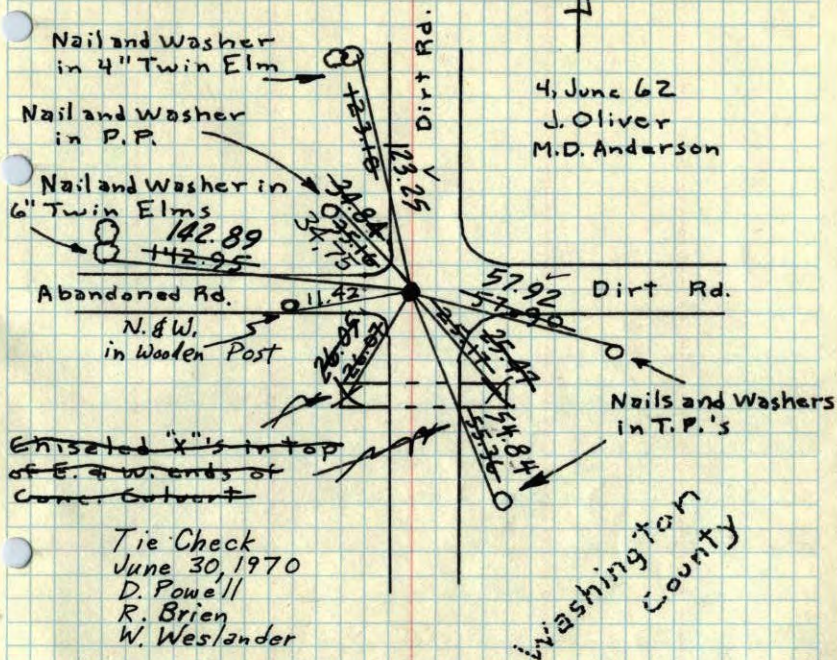
N.E. Cor. Sec. 36-T32-R22

Cast Iron Monument in place down 0.4'±

SEE NEW
TIESJune 4, 1962
J. Oliver
M.D. AndersonTie check
June 11, 1973
B. Olson
D. Brien
R. FarmerTEMPERATURE CORRECTED
AND HORIZONTALLY
TAPED MEASUREMENTSROLAND W. ANDERSON
COUNTY SURVEYOR
ANOKA COUNTY, MINNESOTA

NE Cor Sec. 36, T32, R22

Found Bent 1" I.P. down 0.5' From M.H.D. ties -
Straightened up and checked ties which fit good.
Set Cast Iron Monument down N 0.4'± in
place of I.P. 4'± West of E.

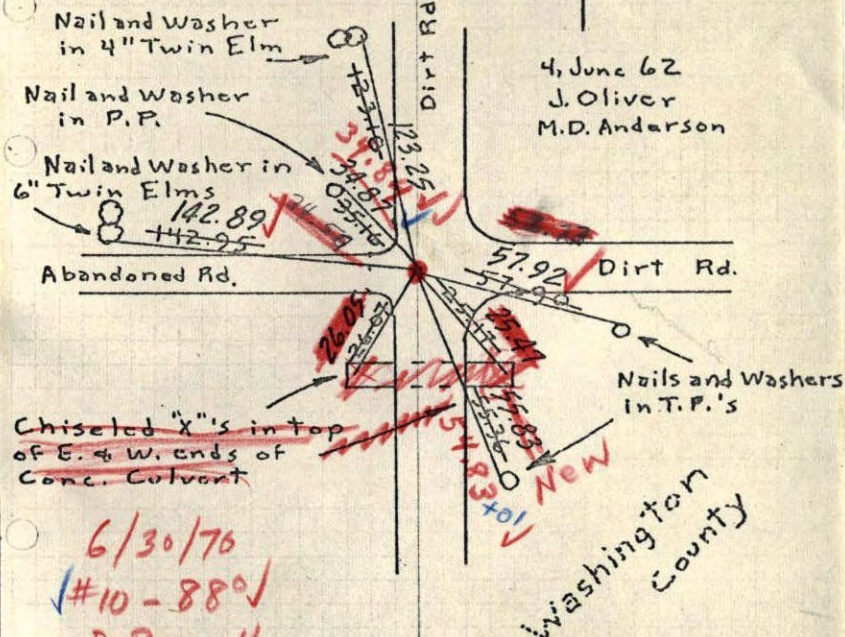
4, June 62
J. Oliver
M.D. AndersonTie Check
June 30, 1970
D. Powell
R. Brien
W. WeslanderTie Check
June 11, 1973
B. Olson
D. Brien
D. FarmerRetie 9/18/64
M.D. Anderson
J. Oliver
G. MillsROLAND W. ANDERSON
COUNTY SURVEYOR
ANOKA COUNTY, MINNESOTATEMPERATURE CORRECTED
AND HORIZONTALLY
TAPED MEASUREMENTS

NE Cor Sec. 36, T32, R 22

Found Bent 1" I.P. down 0.5' From M.H.D. ties -

Straightened up and checked ties which fit good.

I.P. moved slightly. Set C.I. Mon. according to ties. Down 0.4't. 4't West of E



4 June 62
J. Oliver
M.D. Anderson

Chisled "X" in top of E. & W. ends of Conc. Culvert

*6/30/76
#10-880
D. Powell
R. Brien
W. Westlander*

Washington County

*Retie 9/18/64
M.D. Anderson
J. Oliver
G. Mills*

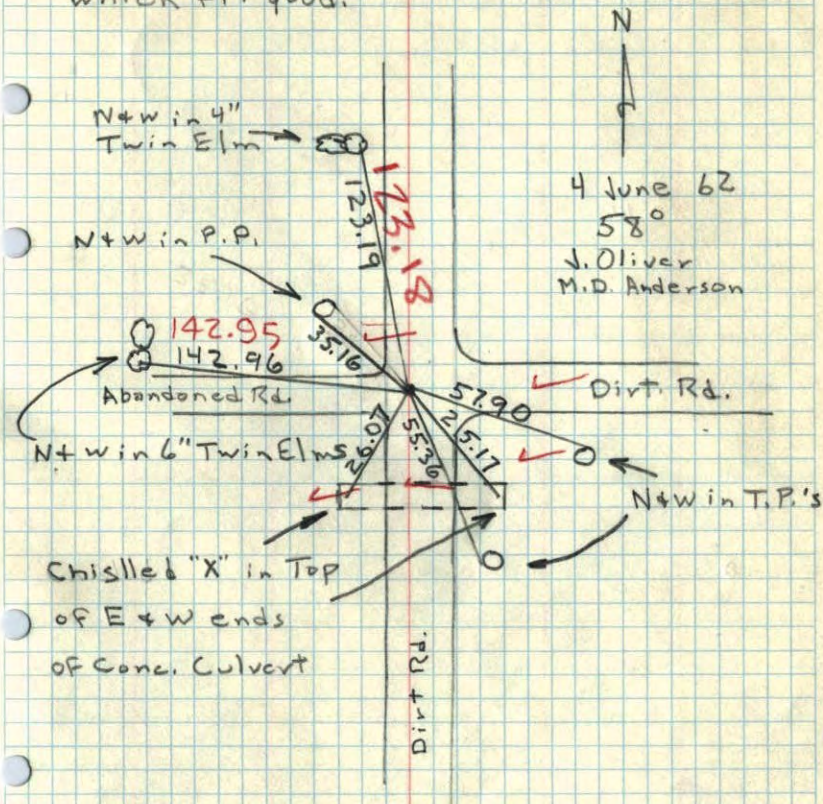
ROLAND W. ANDERSON
COUNTY SURVEYOR
ANOKA COUNTY, MINNESOTA

TEMPERATURE CORRECTED
AND HORIZONTALLY
TAPED MEASUREMENTS

NE Cor. Sec. 36, T32, R 22

Found Bent 1" I.P. down 0.5' From M.H.D.

Ties - straightened up and checked Ties which fit good.

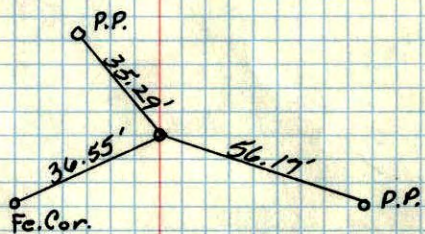


4 June 62
58°
J. Oliver
M.D. Anderson

Chisled "X" in Top of E & W ends of Conc. Culvert

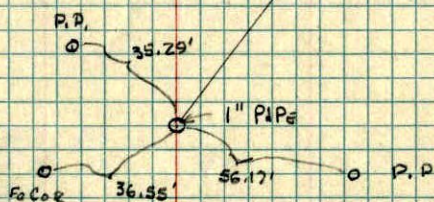
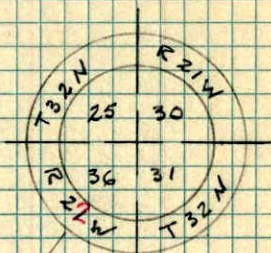
N.E. COR. SEC. 36, T32, R22

1" Pipe



New Tics in
New Tic Book

M.H.D.



NE COR. SEC. 36 T32 R22

Done