

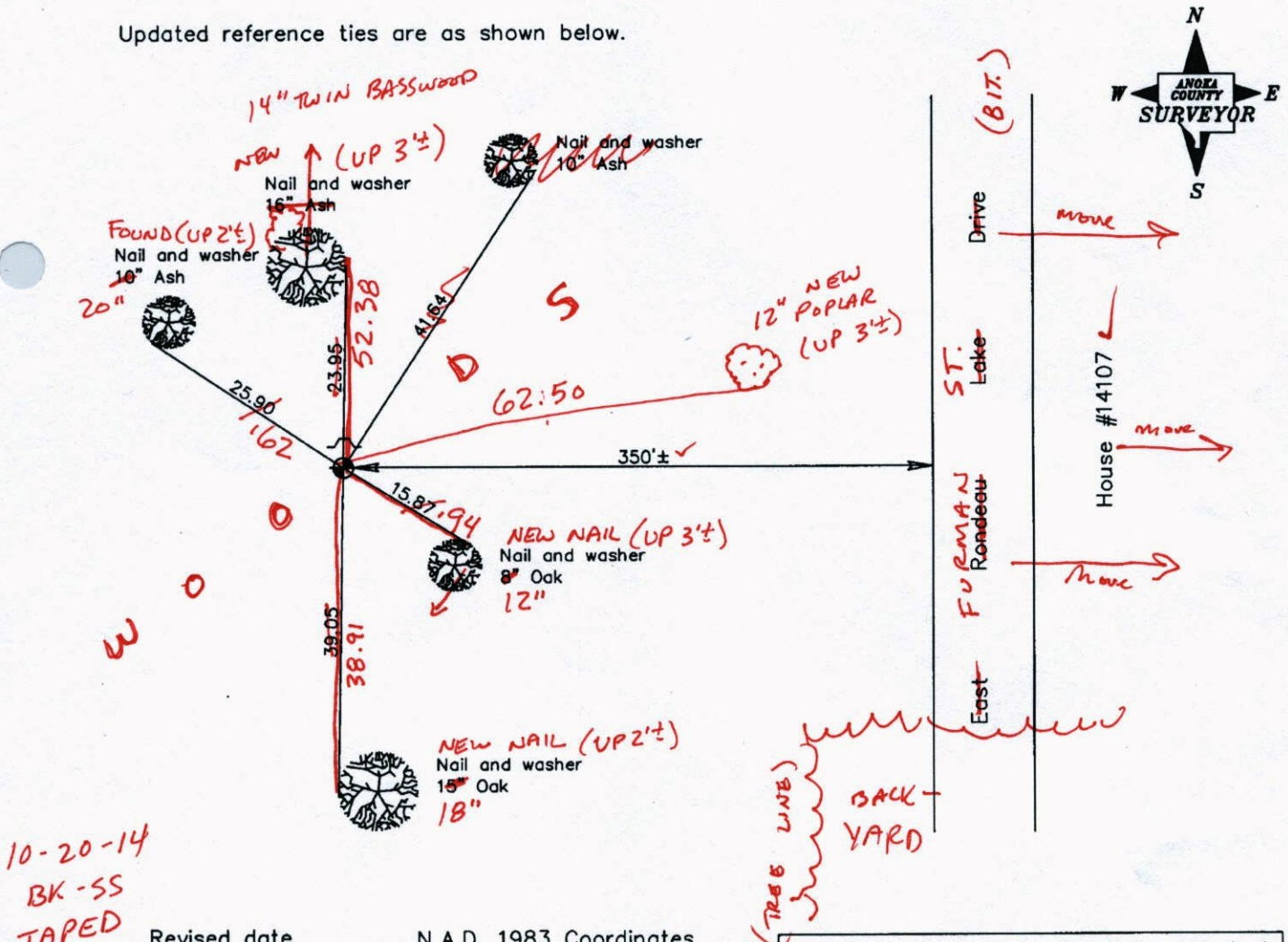
CERTIFICATE OF LOCATION OF GOVERNMENT CORNER
 County of Anoka State of Minnesota
 Northwest Corner of Sec. 35 Township 32 Range 22

On the 2nd day of July, 1974, the described corner was evidenced by area resurvey

and to perpetuate the location of said corner, at the exact location thereof, a permanent marker was placed consisting of a cast iron monument with a sign and post on the north side *MON. (UP 0.24)*

AND on the 24th day of January, 2006, said permanent marker was found and the ties were updated

Updated reference ties are as shown below.



Revised date

1/11/93
8/23/95
1/24/06

N.A.D. 1983 Coordinates (1996 Adjustment)

County Project Coordinates	
Northing	169441.5963
Easting	553157.1078
Date	1/24/06

I hereby certify that this United States public land survey monument record is correct and complete to the best of my knowledge and belief.

Larry D. Hoium Date 1/24/06

Larry D. Hoium, Anoka County Surveyor
 Minnesota License Number 18165

CERTIFICATE OF LOCATION OF GOVERNMENT CORNER

County of Anoka

State of Minnesota

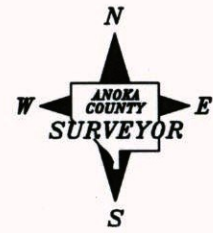
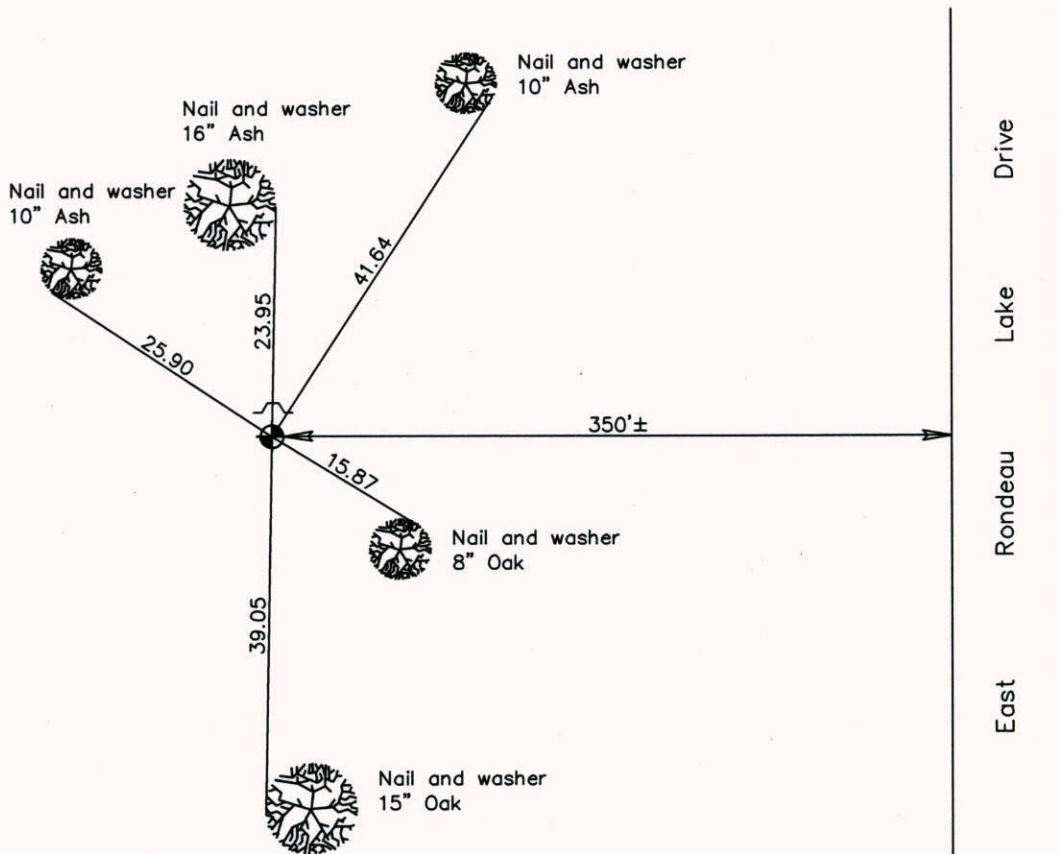
Northwest Corner of Sec. 35 Township 32 Range 22

On the 2nd day of July, 1974, the described corner was evidenced by area resurvey

and to perpetuate the location of said corner, at the exact location thereof, a permanent marker was placed consisting of a cast iron monument with a sign and post on the north side

AND on the 24th day of January, 2006, said permanent marker was found and the ties were updated

Updated reference ties are as shown below.



Revised date

1/11/93
8/23/95
1/24/06

**N.A.D. 1983 Coordinates
(1996 Adjustment)**

County Project Coordinates
Northing <u>169441.5963</u>
Easting <u>553157.1078</u>
Date <u>1/24/06</u>

I hereby certify that this United States public land survey monument record is correct and complete to the best of my knowledge and belief.

Larry D. Hoium Date 1/24/06

Larry D. Hoium, Anoka County Surveyor

Minnesota License Number 18165

CERTIFICATE OF LOCATION OF GOVERNMENT CORNER

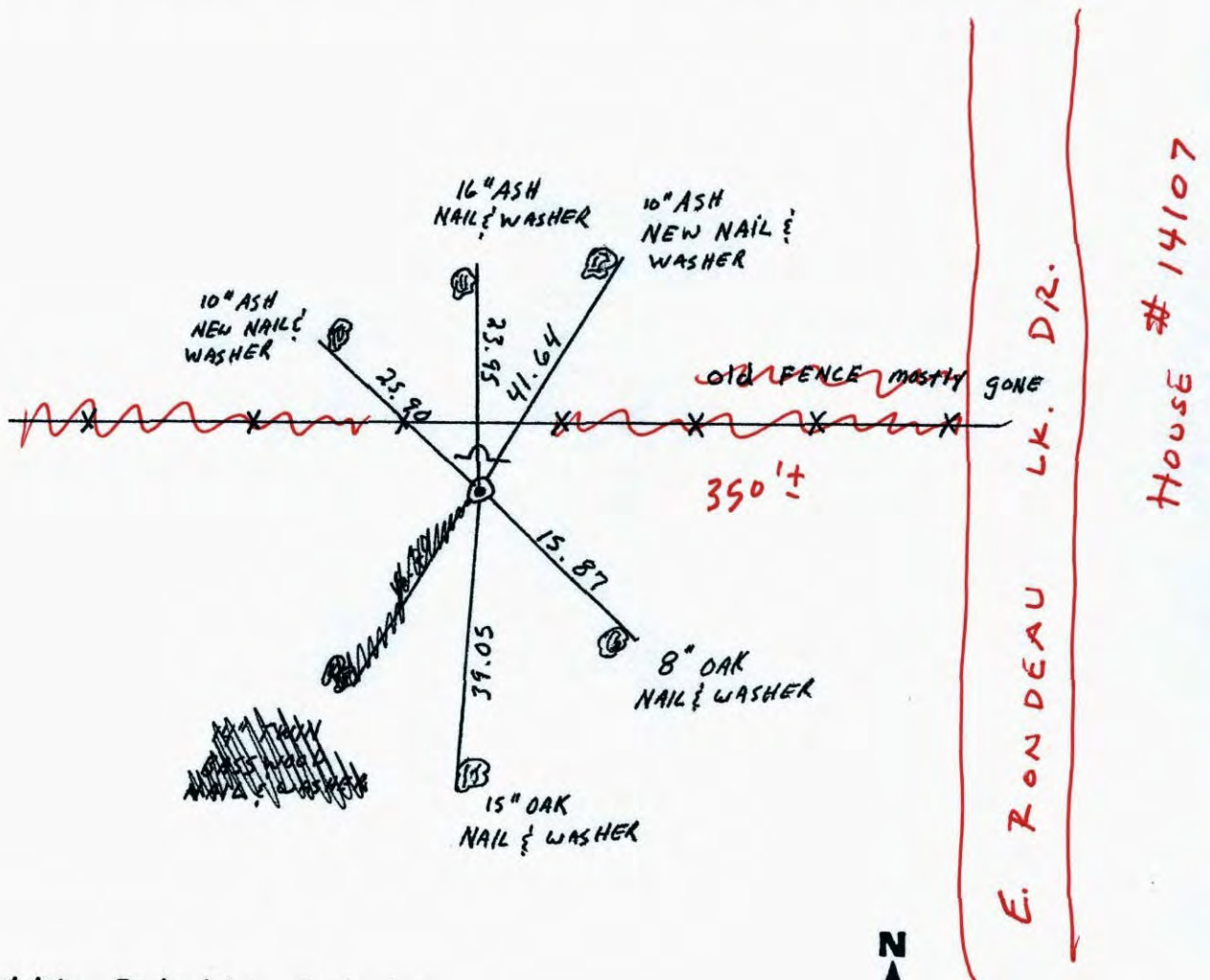
County of Anoka State of Minnesota

NORTH WEST Corner of Sec. 35 Township 32 Range 22

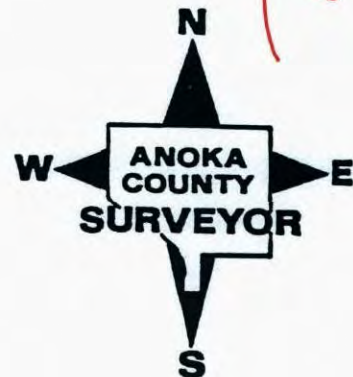
I hereby certify that on the 2 day of July, 1974, I found the described corner which was evidenced by area resurvey

and I further certify that to perpetuate the location of said corner, I did, at the exact location thereof, place a permanent marker consisting of CAST IRON MONUMENT SIGN AND POST ON NORTH SIDE

which reference or witness monuments are located in the manner following:



Revised date	Revised date	Revised date
7-2-74	8-23-95	
8-4-76		
8-3-79		
7-14-82		
8-15-85		
7-5-90		
1-11-93		



CERTIFICATE OF LOCATION OF GOVERNMENT CORNER

County of Anoka

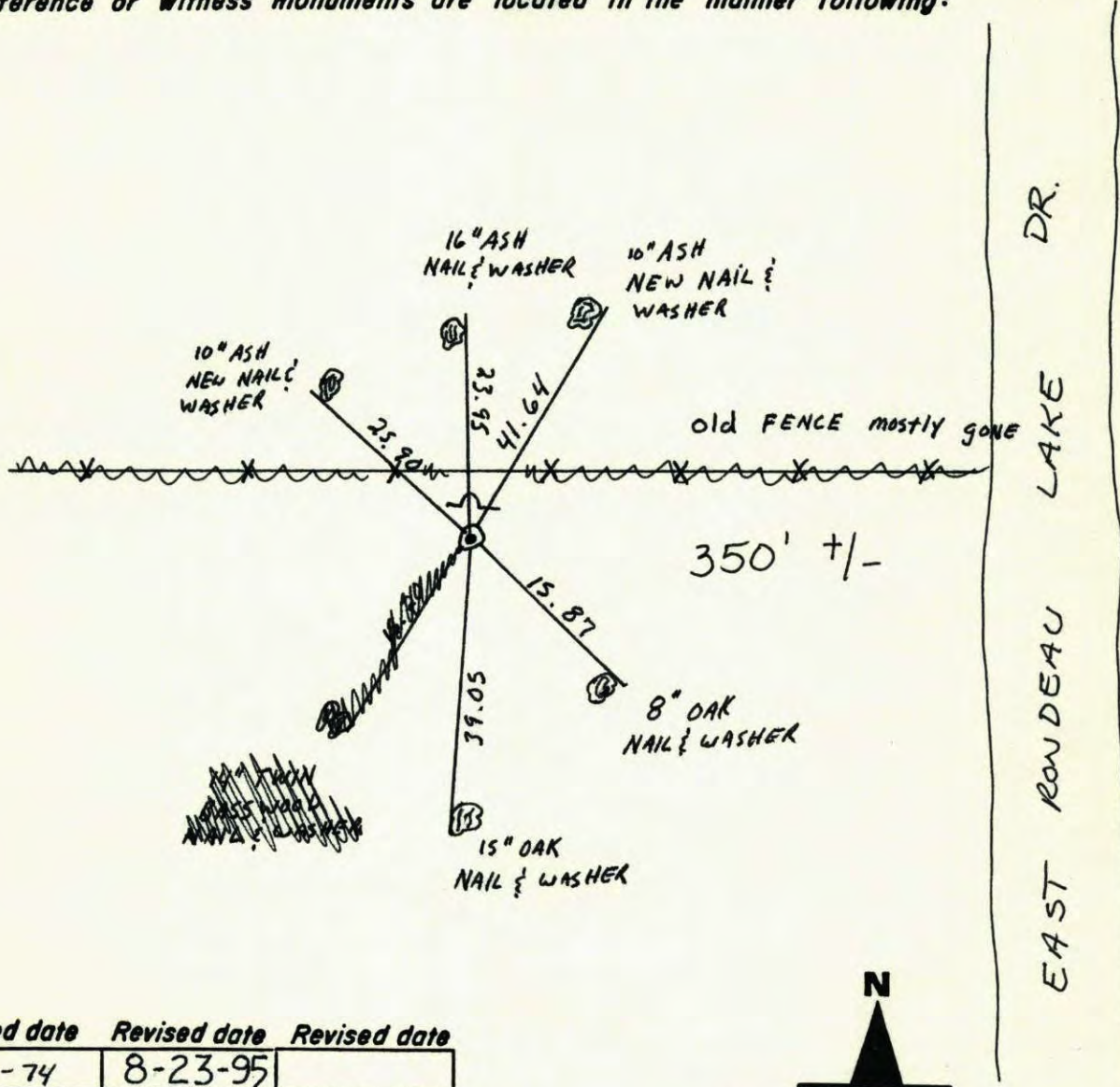
State of Minnesota

NORTH WEST Corner of Sec. 35 Township 32 Range 22

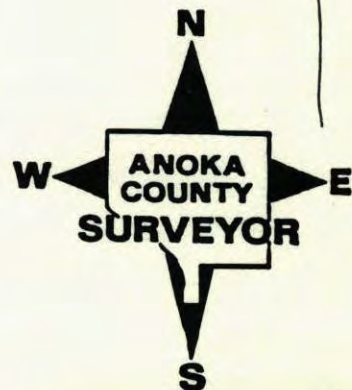
I hereby certify that on the 2 day of July, 1974, I found the described corner which was evidenced by area resurvey

and I further certify that to perpetuate the location of said corner, I did, at the exact location thereof, place a permanent marker consisting of CAST IRON MONUMENT SIGN AND POST ON NORTH SIDE

which reference or witness monuments are located in the manner following:

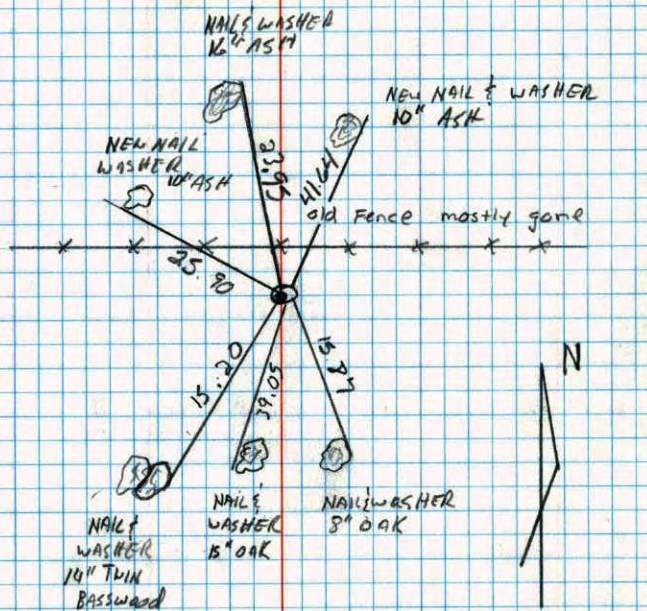


Revised date	Revised date	Revised date
7-2-74	8-23-95	
8-4-76		
8-3-79		
7-14-82		
8-15-85		
7-5-90		
1-11-93		



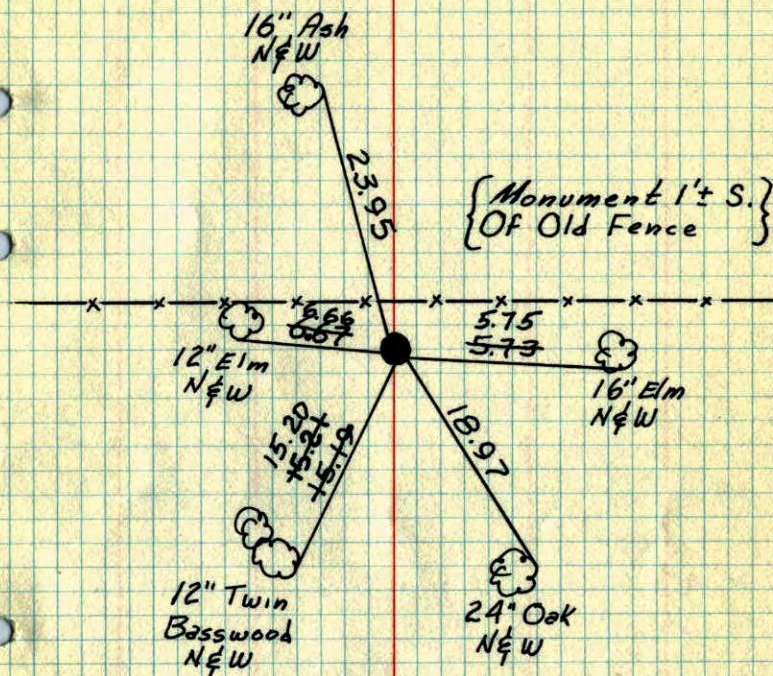
Northwest corner of sec. 35 T32 R22

Retied cast iron monument



7-5-90
D. Klorsy
M. Zimmermann

NW Cor. Sec. 35-T32-R22

Set Cast Iron Monument From Area Resurvey
C.I. Flush

7-2-1974
H. Larson
J. Boettchen
B. Schaffer
Temp. 85°
Tape #14

TIE CHECK
8-11-76
G. ADAMS
S. BRIEN
J. STEPHENS

TIE CHECK
8-3-79
B. STEPHENS
D. STEPHENS
P. ROSS
TEMP. 70°
TAPE #2

ROLAND W. ANDERSON
COUNTY SURVEYOR
ANOKA COUNTY, MINNESOTA

TEMPERATURE CORRECTED
AND HORIZONTALLY
TAPED MEASUREMENTS

NW Cor. Sec. 35 T32 R22

Set cast iron monument from area

resurvey. C.I. Flush

85° 7-2-74

H. Larson
S. Beattcher
B. Shaffer

