

CERTIFICATE OF LOCATION OF GOVERNMENT CORNER

County of Anoka

State of Minnesota

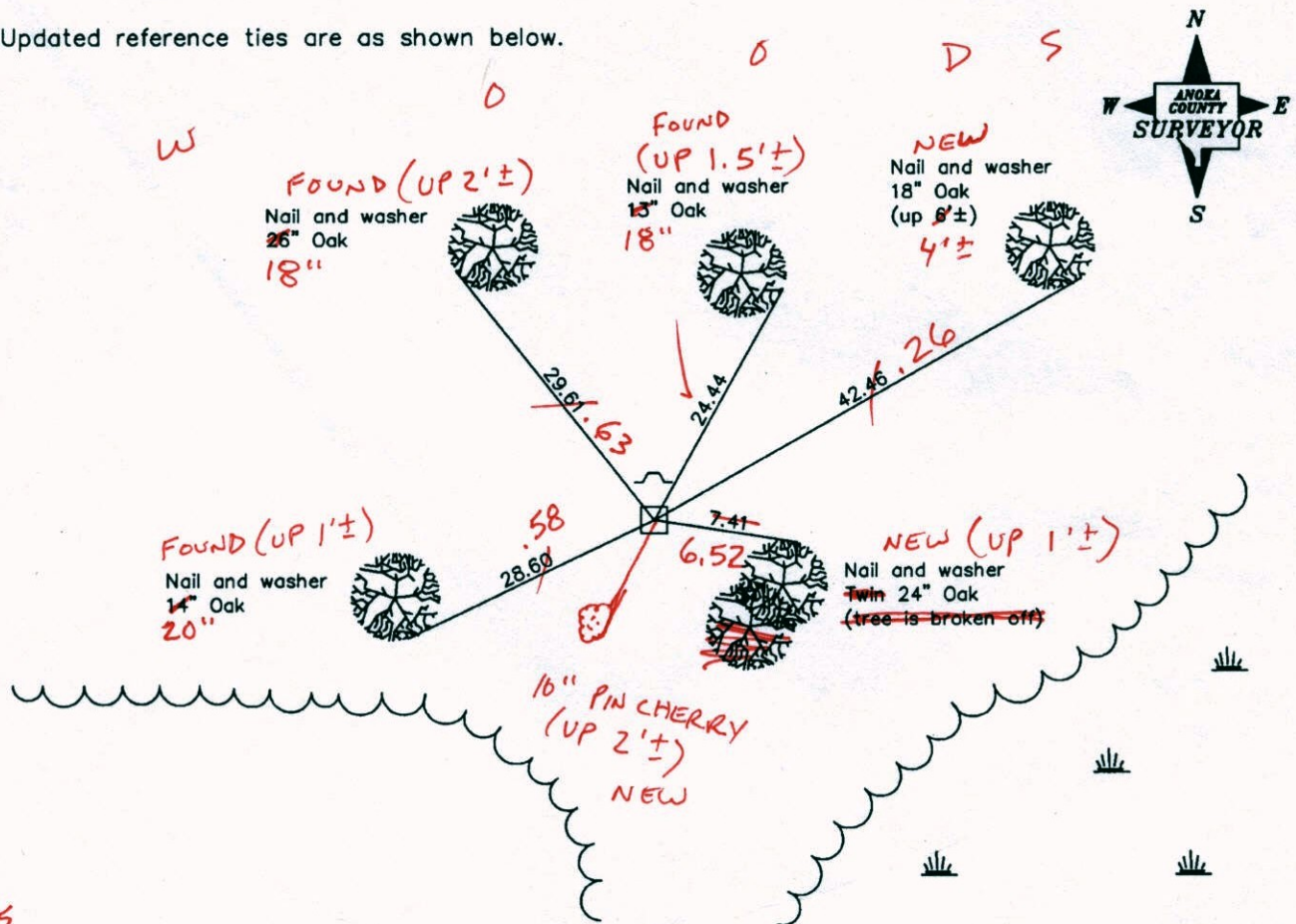
Northeast Corner of Sec. 31 Township 32 Range 22

On the 7th day of February, 1961, the described corner was evidenced by a reinforced concrete monument

and to perpetuate the location of said corner, at the exact location thereof, a permanent marker was placed consisting of the same concrete monument with a sign and post on the north side

AND on the 15th day of March, 2007, said permanent marker was found broken off and the ties were updated

Updated reference ties are as shown below.



3-9-15
BK-SS-SH
TAPED

Revised date
3/02/94
8/22/95
3/15/07

N.A.D. 1983 Coordinates (1996 Adjustment)	
County Project Coordinates	
Northing	169368.8791
Easting	537426.9301
Date	2/15/06

I hereby certify that this United States public land survey monument record is correct and complete to the best of my knowledge and belief.

Larry D. Hoium Date 3/15/07

Larry D. Hoium, Anoka County Surveyor

Minnesota License Number 18165

CERTIFICATE OF LOCATION OF GOVERNMENT CORNER

County of Anoka

State of Minnesota

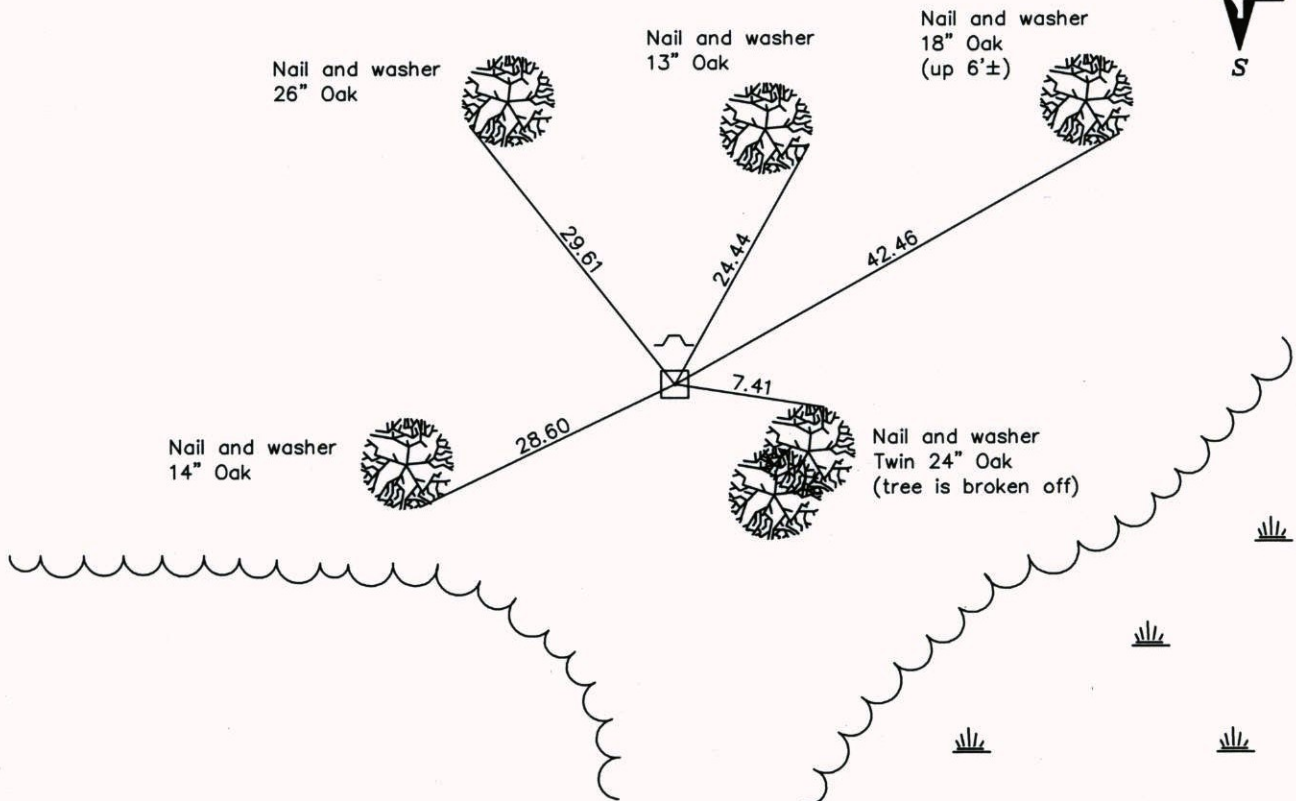
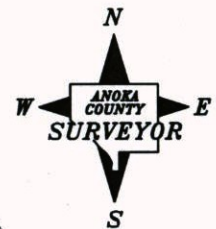
Northeast Corner of Sec. 31 Township 32 Range 22

On the 7th day of February, 1961, the described corner was evidenced by a reinforced concrete monument

and to perpetuate the location of said corner, at the exact location thereof, a permanent marker was placed consisting of the same concrete monument with a sign and post on the north side

AND on the 15th day of March, 2007, said permanent marker was found broken off and the ties were updated

Updated reference ties are as shown below.



Revised date

3/02/94
8/22/95
3/15/07

N.A.D. 1983 Coordinates
(1996 Adjustment)

County Project Coordinates
Northing <u>169368.8791</u>
Easting <u>537426.9301</u>
Date <u>2/15/06</u>

I hereby certify that this United States public land survey monument record is correct and complete to the best of my knowledge and belief.

Date 3/15/07
Larry D. Hoium, Anoka County Surveyor
 Minnesota License Number 18165

CERTIFICATE OF LOCATION OF GOVERNMENT CORNER

County of Anoka

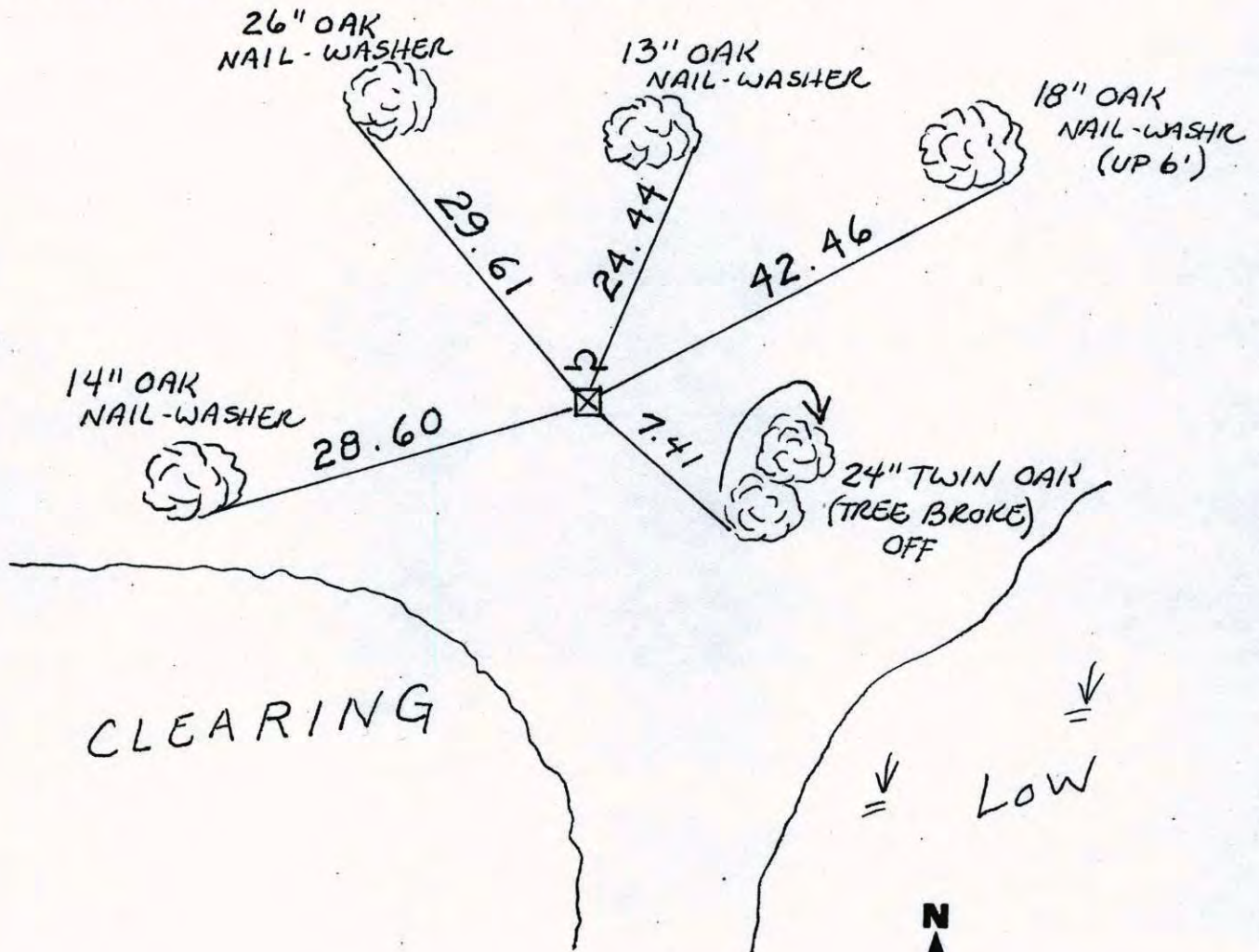
State of Minnesota

NORTHEAST Corner of Sec. 31 Township 32 Range 22

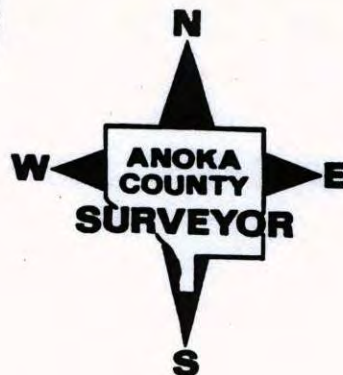
I hereby certify that on the 7 day of FEB., 1961, I found the described corner which was evidenced by REINFORCED CONC. MON'T.

and I further certify that to perpetuate the location of said corner, I did, at the exact location thereof, place a permanent marker consisting of CONC. MON. (BROKEN OFF) SIGN & POST ON NORTH SIDE

which reference or witness monuments are located in the manner following:



Revised date	Revised date	Revised date
3-2-94		
8-22-95		
3-15-07		



CERTIFICATE OF LOCATION OF GOVERNMENT CORNER

County of Anoka

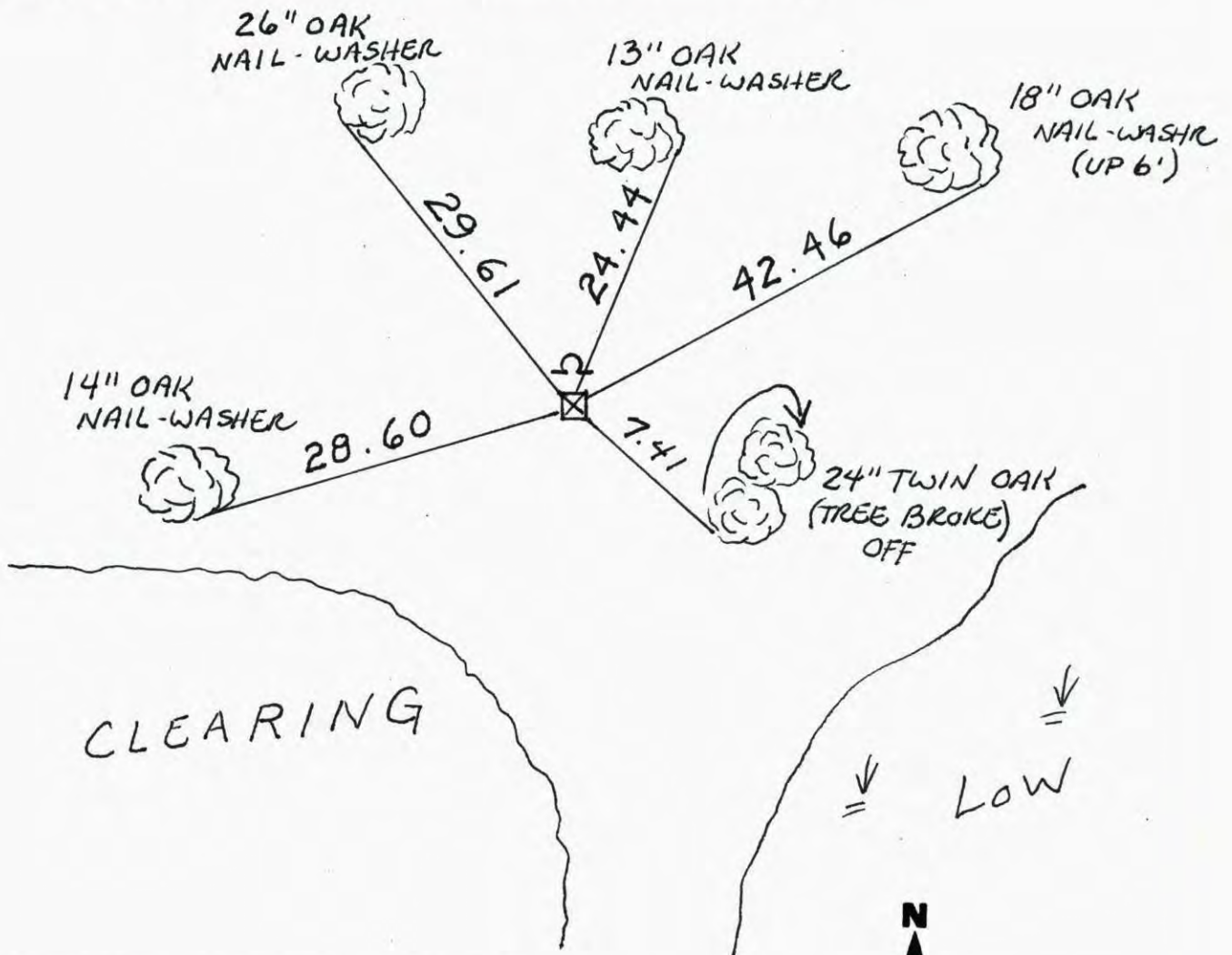
State of Minnesota

NORTHEAST Corner of Sec. 31 Township 32 Range 22

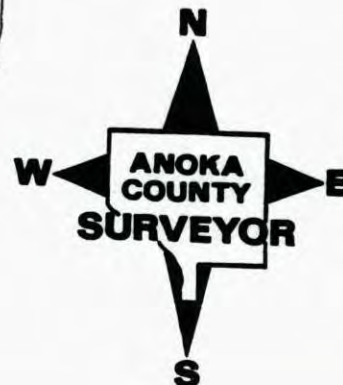
I hereby certify that on the 7 day of FEB., 1961, I found the described corner which was evidenced by REINFORCED CONC. MON'T.

and I further certify that to perpetuate the location of said corner, I did, at the exact location thereof, place a permanent marker consisting of CONC. MON. (BROKEN OFF) SIGN & POST ON NORTH SIDE

which reference or witness monuments are located in the manner following:



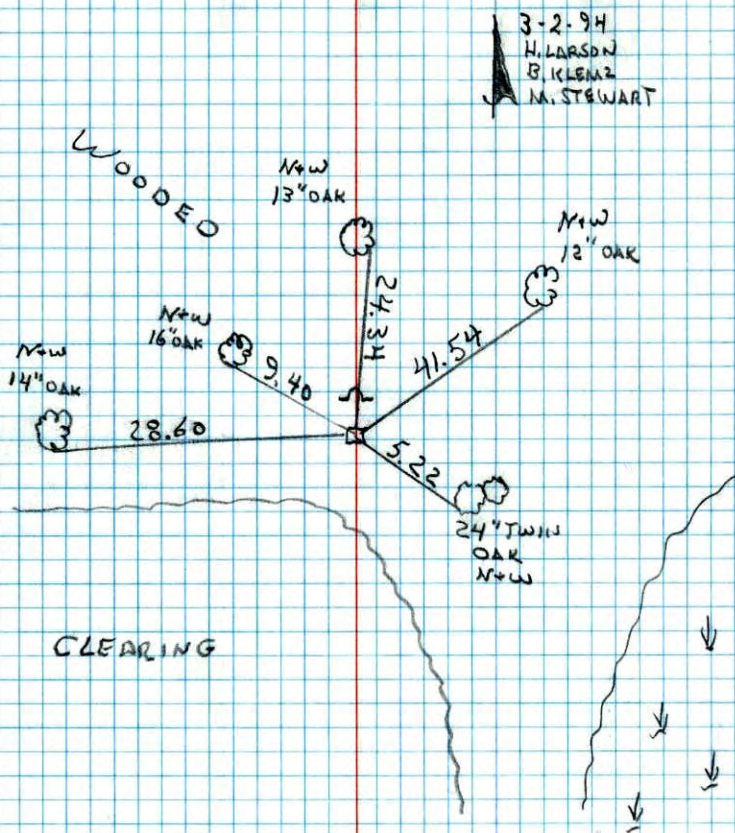
Revised date	Revised date	Revised date
3-2-94		
8-22-95		
3-15-07		



NE COR. SECTION 31 T32 R22

RETIED CONCRETE MONUMENT

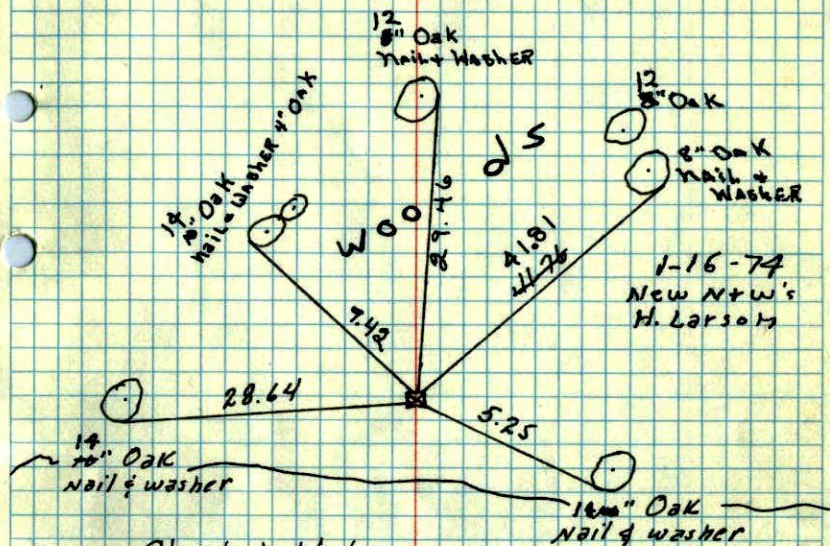
SIGN + POST ON NORTH SIDE



NO. 448

TELEPHONE

NE Cor Sec 31-32-22: (Columbus)

Found Re-inforced Conc. Mon. Top 8" broken
off Mon. up 0.3' (original Mon up 1.0')

Check in Winter.

open Field

2/7/61

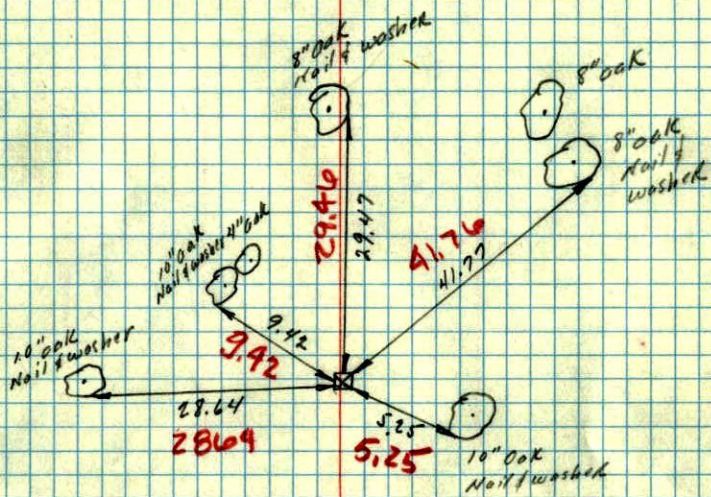
TEMPERATURE CORRECTED
AND HORIZONTALLY
TAPED MEASUREMENTS

Freeman Anderson

TEMP. CORR
for +38°Tie check
2-6-78
H. Larson
B. GuetkoROLAND W. ANDERSON
COUNTY SURVEYOR
ROCK COUNTY, MINNESOTA

7 Feb 1961
Freeman Anderson
+38°

NE Cor. Sec 31-32-22- (Columbus)
Found Re-inforced Conc. Men. Top 8" broken
off Man up 0.3' (original Man up 1.0')



TEMP. CORR.
for +38°