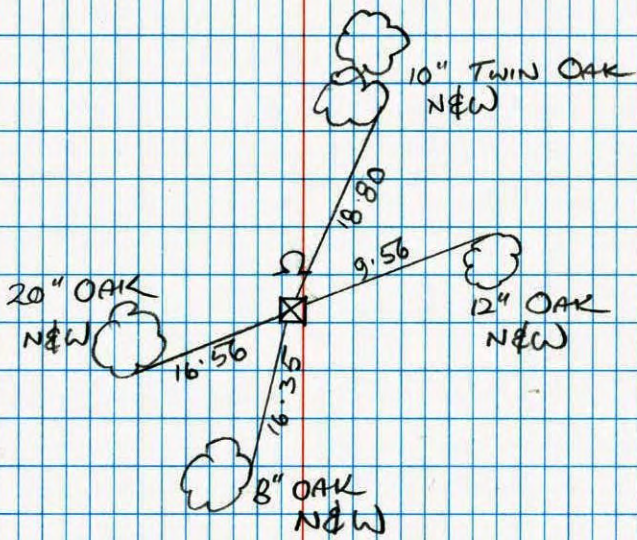
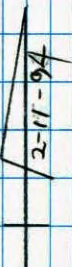


Nth 1/16th of NW 1/4 SEC 31 T32 R22

RETIRED CONCRETE MONUMENT
WITH SIGN & POST ON NTH SIDE

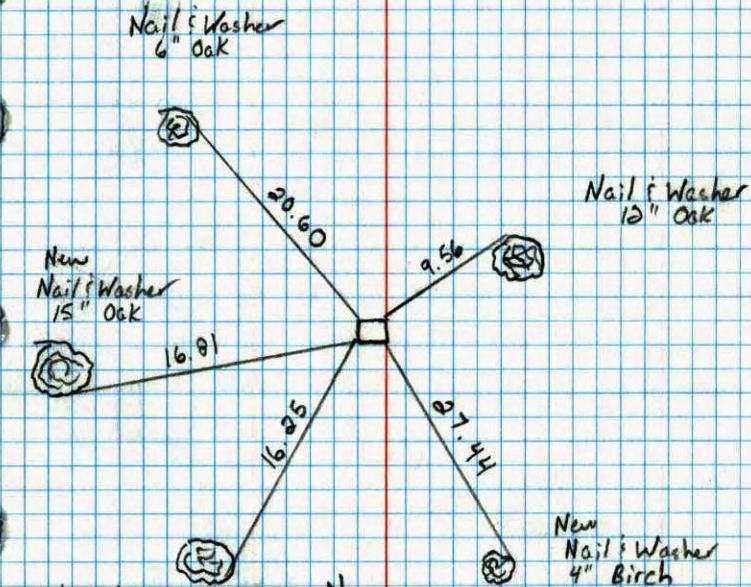


B. KLEMZ
M. STEWART



N 1/16th of the NW 1/4 Corner Sec. 31 T32 R22

Retired Concrete Monument



Nail & Washer
6" Oak

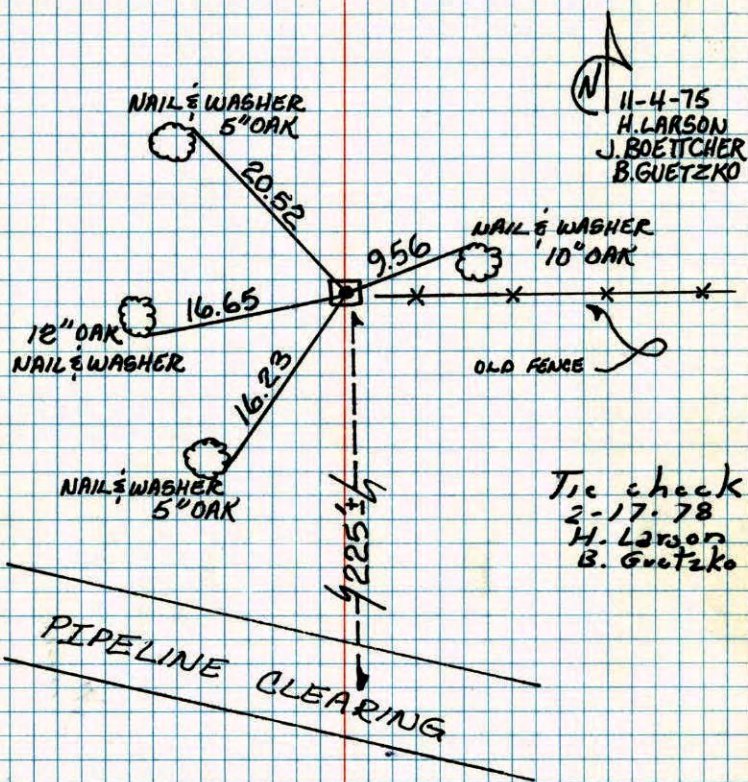


7-16-90
M. Zimmerman
D. Klesy

114A

N. 1/16 CORNER OF N.W. 1/4 SEC. 31, T.32, R.22

FOUND AND TIED CONCRETE MONUMENT UP 1'±



TEMPERATURE CORRECTED
AND HORIZONTALLY
TAPED MEASUREMENTS

ROLAND W. ANDERSON
COUNTY SURVEYOR
ANOKA COUNTY, MINNESOTA

114A

N. 1/16 Cor. of N.W. 1/4 Sec 31, T32, R22

Found & tied concrete monument,
mon. up. 1 foot.