

CERTIFICATE OF LOCATION OF GOVERNMENT CORNER
 County of Anoka State of Minnesota

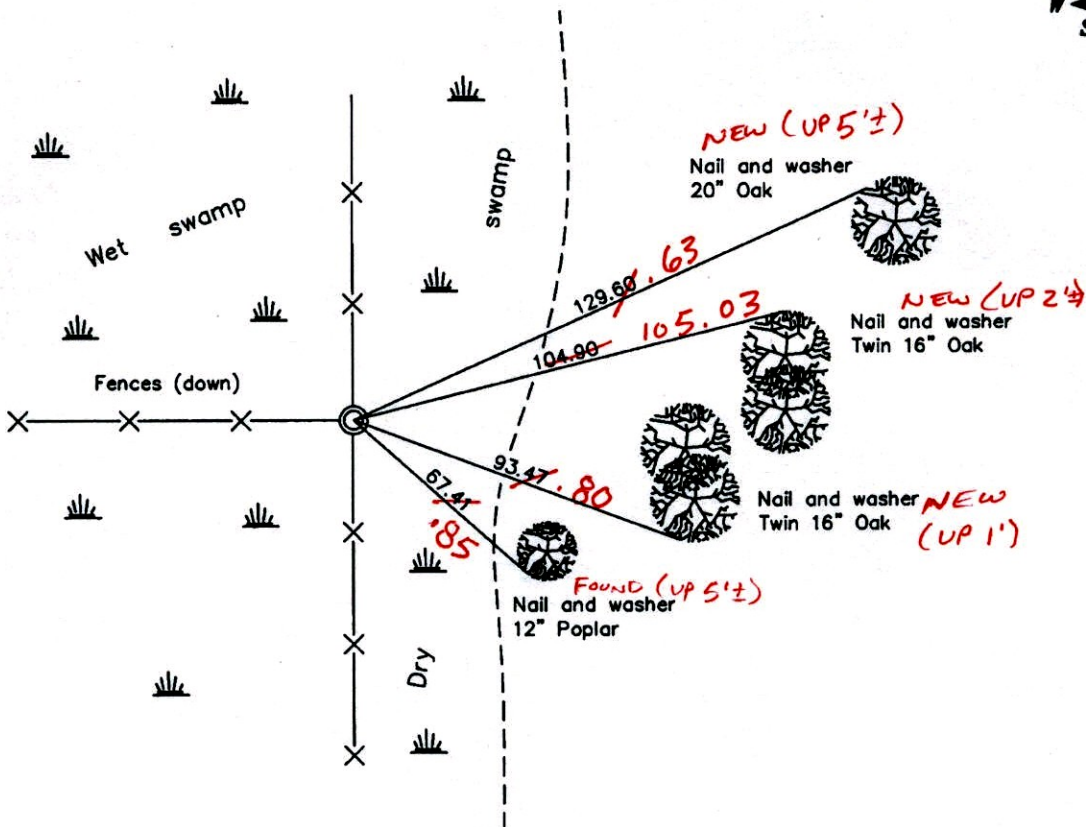
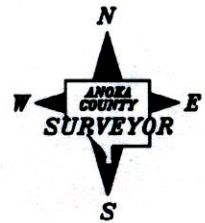
North 1/4 Corner of Sec. 31 Township 32 Range 22

On the 7th day of February, 1961, the described corner was evidenced by a concrete monument

and to perpetuate the location of said corner, at the exact location thereof, a permanent marker was placed consisting of a red and white iron pipe 2" PIPE (UP 3'±) (Leaning W'LY 0.5'±)

AND on the 22nd day of February, 2006, said permanent marker was found and the ties were updated

Updated reference ties are as shown below.



3-9-15
 BK-55-SH
 TAPED

VRS

Revised date
5/08/89
8/22/95
2/22/06

N.A.D. 1983 Coordinates (1996 Adjustment)	
County Project Coordinates	
• Northing	169377.3096
Easting	534784.2193
Date	2/22/06

I hereby certify that this United States public land survey monument record is correct and complete to the best of my knowledge and belief.

Larry D. Hoium Date 2/22/06
 Larry D. Hoium, Anoka County Surveyor
 Minnesota License Number 18165

3DQ = 0.05 N = 169377.2781 E = 534783.7441

CERTIFICATE OF LOCATION OF GOVERNMENT CORNER

County of Anoka

State of Minnesota

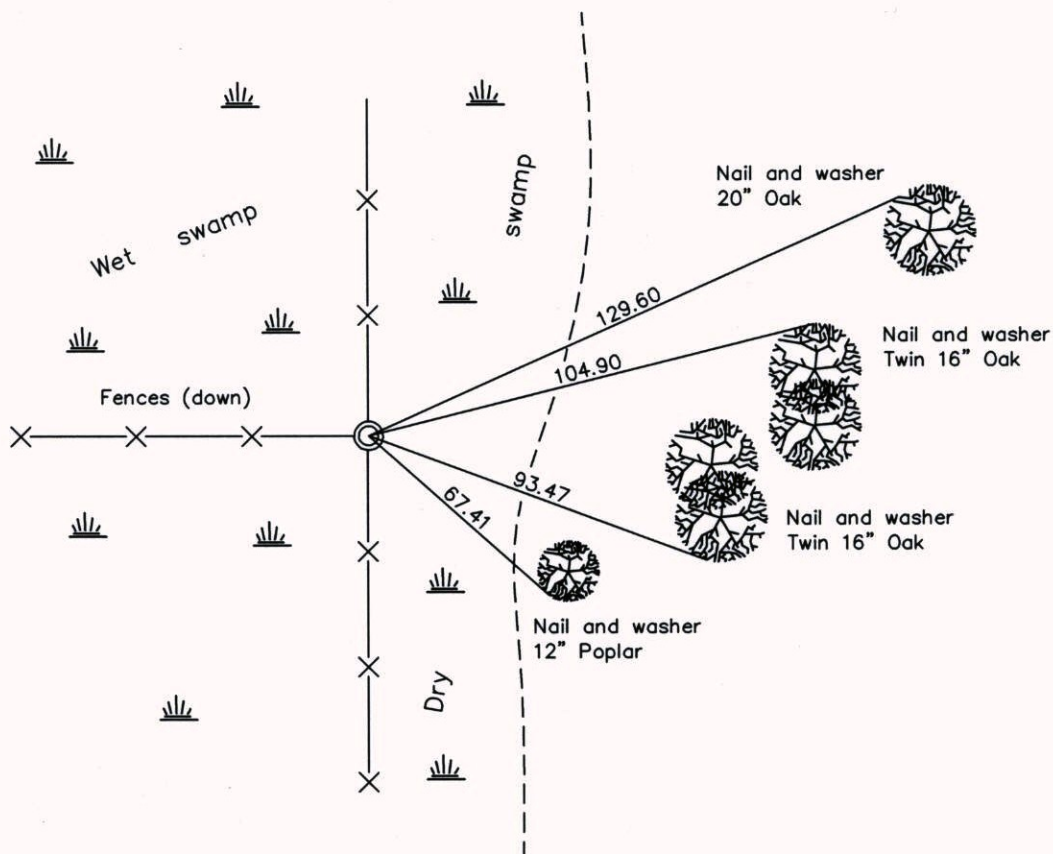
North 1/4 Corner of Sec. 31 Township 32 Range 22

On the 7th day of February, 1961, the described corner was evidenced by a concrete monument

and to perpetuate the location of said corner, at the exact location thereof, a permanent marker was placed consisting of a red and white iron pipe

AND on the 22nd day of February, 2006, said permanent marker was found and the ties were updated

Updated reference ties are as shown below.



Revised date

5/08/89
8/22/95
2/22/06

N.A.D. 1983 Coordinates
(1996 Adjustment)

County Project Coordinates	
Northing	<u>169377.3096</u>
Easting	<u>534784.2193</u>
Date	<u>2/22/06</u>

I hereby certify that this United States public land survey monument record is correct and complete to the best of my knowledge and belief.

Larry D. Hoium Date 2/22/06
 Larry D. Hoium, Anoka County Surveyor
 Minnesota License Number 18165

CERTIFICATE OF LOCATION OF GOVERNMENT CORNER

County of Anoka

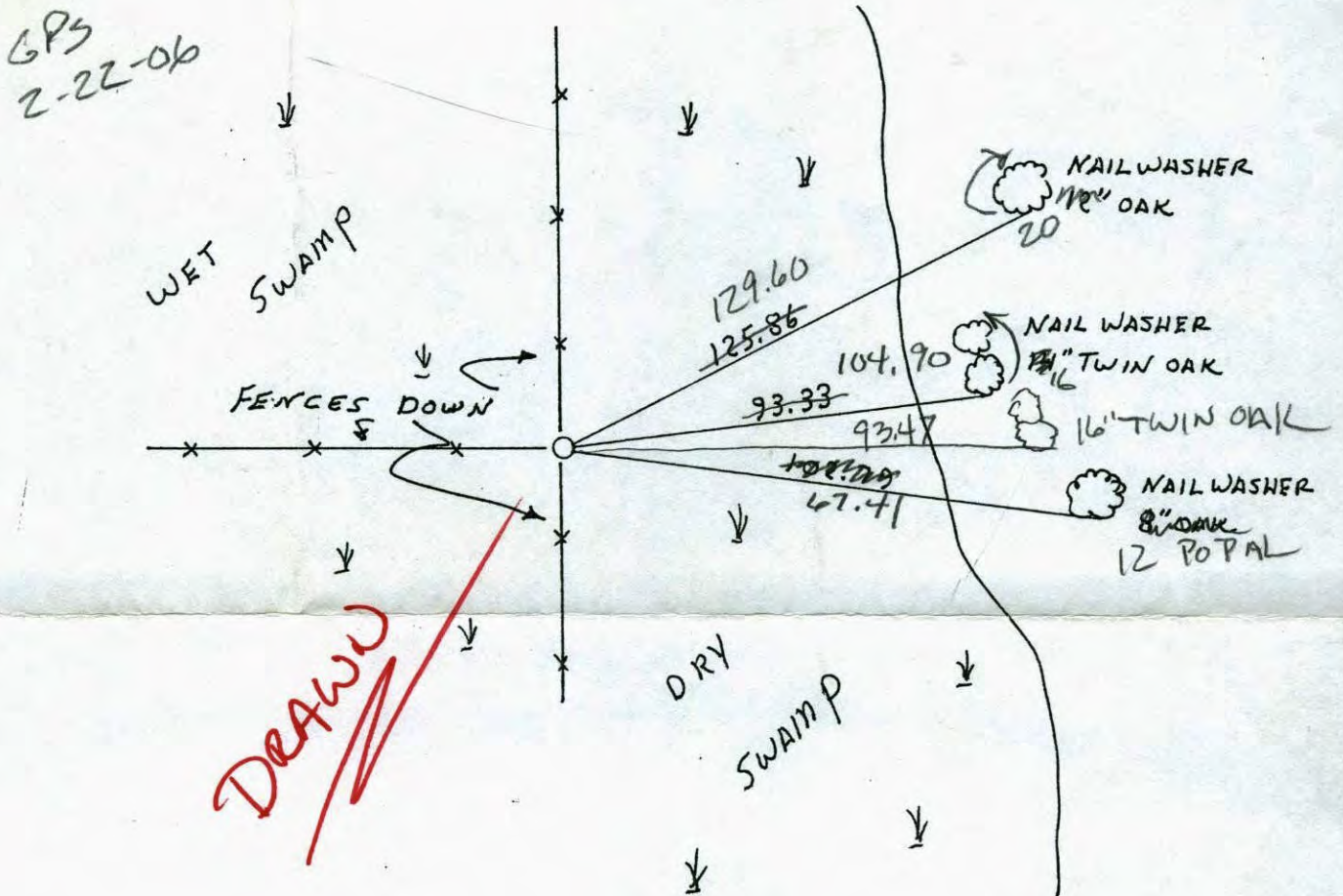
State of Minnesota

NORTH 1/4 Corner of Sec. 31 Township 32 Range 22

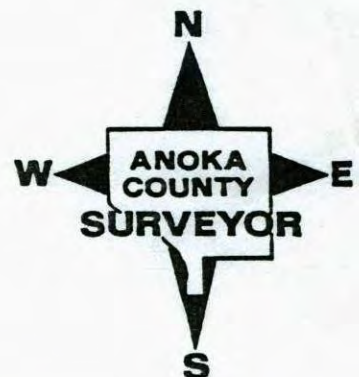
I hereby certify that on the 7 day of FEB, 1961, I found the described corner which was evidenced by CONCRETE MONUMENT

and I further certify that to perpetuate the location of said corner, I did, at the exact location thereof, place a permanent marker consisting of RED AND WHITE IRON PIPE

which reference or witness monuments are located in the manner following:



Revised date	Revised date	Revised date
7-14-70		
7-14-70		
1-16-74		
11-4-75		
2-17-78		
REDRAWN 5-8-89 HL		
8-22-95		



CERTIFICATE OF LOCATION OF GOVERNMENT CORNER

County of Anoka

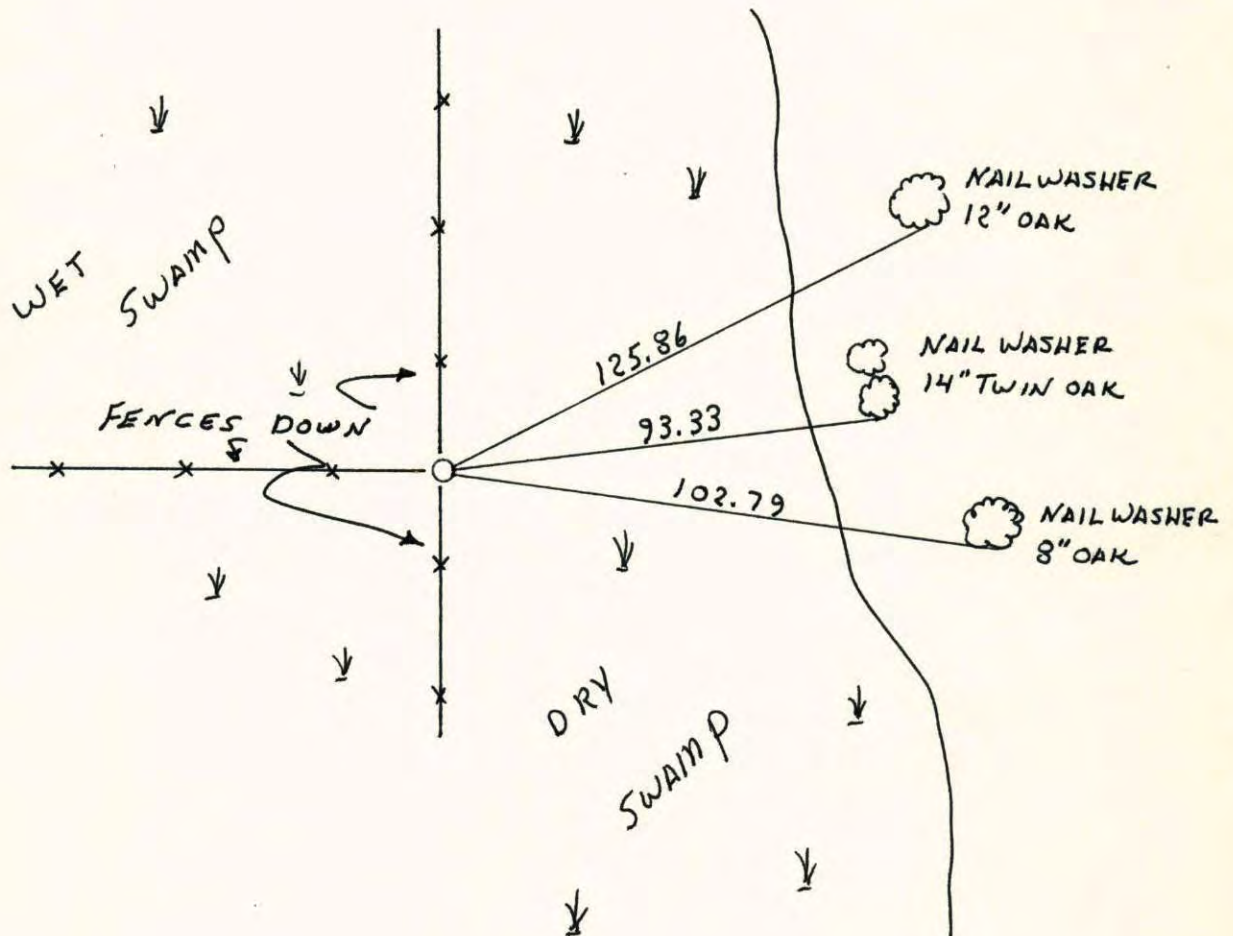
State of Minnesota

NORTH 1/4 Corner of Sec. 31 Township 32 Range 22

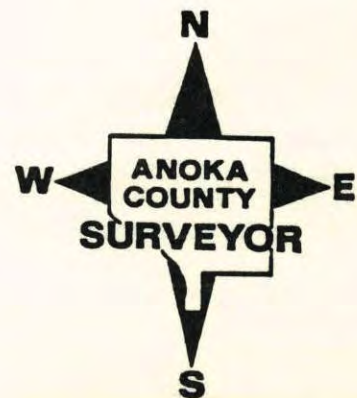
I hereby certify that on the 7 day of FEB, 1961, I found the described corner which was evidenced by CONCRETE MONUMENT

and I further certify that to perpetuate the location of said corner, I did, at the exact location thereof, place a permanent marker consisting of RED AND WHITE IRON PIPE

which reference or witness monuments are located in the manner following:



Revised date	Revised date	Revised date
7-14-70		
7-14-70		
1-16-74		
11-4-75		
2-17-78		
REDRAWN 5-8-89 HL		
8-22-95		

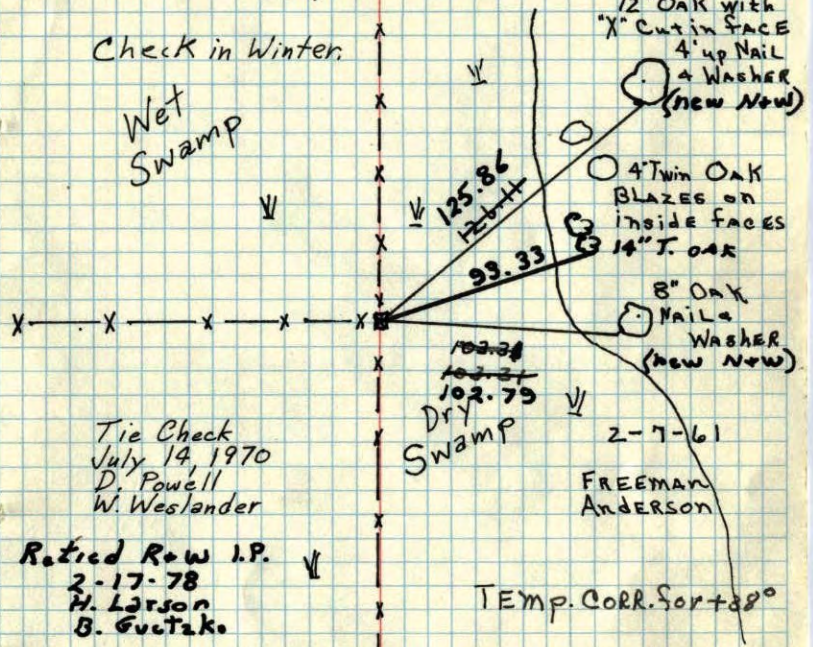


N 1/4 Cor SEC 31-32-22 (Columbus)
 Found Conc. Mon on Edge of Marsh &
 intersection of N & S Fence & Fence to W.

Mon up 2.0'. Concrete is wired to corner
 fence post. { Replaced with Red & White Iron }
 { pipe. 11-4-75 H. Larson }

Check in Winter

Wet
Swamp



Tie Check
 July 14, 1970
 D. Powell
 W. Westlander

Retired Row I.P.
 2-17-78
 H. Larson
 B. Gutzko

Dry
Swamp

FREEMAN
ANDERSON

TEMP. CORR. For +38°

Tie check
 1-16-74
 H. Larson

TEMPERATURE CORRECTED
 AND HORIZONTALLY
 TAPED MEASUREMENTS

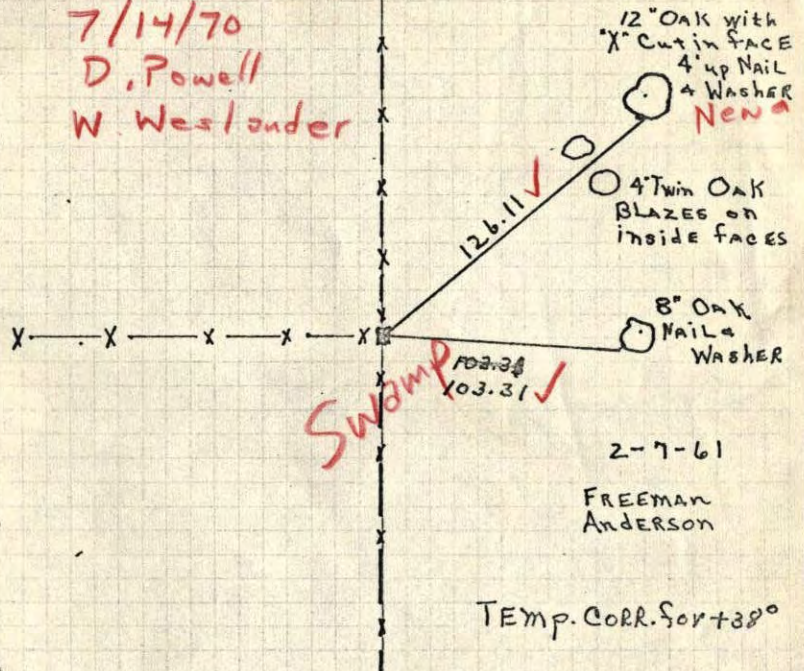
ROLAND W. ANDERSON
 COUNTY SURVEYOR
 ANOKA COUNTY, MINNESOTA

XX

N 1/4 Cor SEC 31-32-22 (Columbus)
 Found Conc. Mon on Edge of Marsh &
 intersection of N & S Fence & Fence to W.

Mon up 2.0' **Conc. is fenced to**
corner fence post.

7/14/70
 D. Powell
 W. Westlander



12" Oak with
 "X" Cut in FACE
 4" up Nail
 & Washer
Nena

4" Twin Oak
 BLAZES on
 inside faces

8" Oak
 Nail &
 Washer

Swamp

2-7-61
 FREEMAN
 ANDERSON

TEMP. CORR. For +38°

TEMPERATURE CORRECTED
 AND HORIZONTALLY
 TAPED MEASUREMENTS

ROLAND W. ANDERSON
 COUNTY SURVEYOR
 ANOKA COUNTY, MINNESOTA

7 Feb 1961
- Freeman Anderson
+ 38°

N $\frac{1}{2}$ Cor. Sec 31-32-22. (Columbus)
Found Conc. Mon on Edge of Marsh of
intersection of N-S fence & fence to W.
Mon up 2.9'

