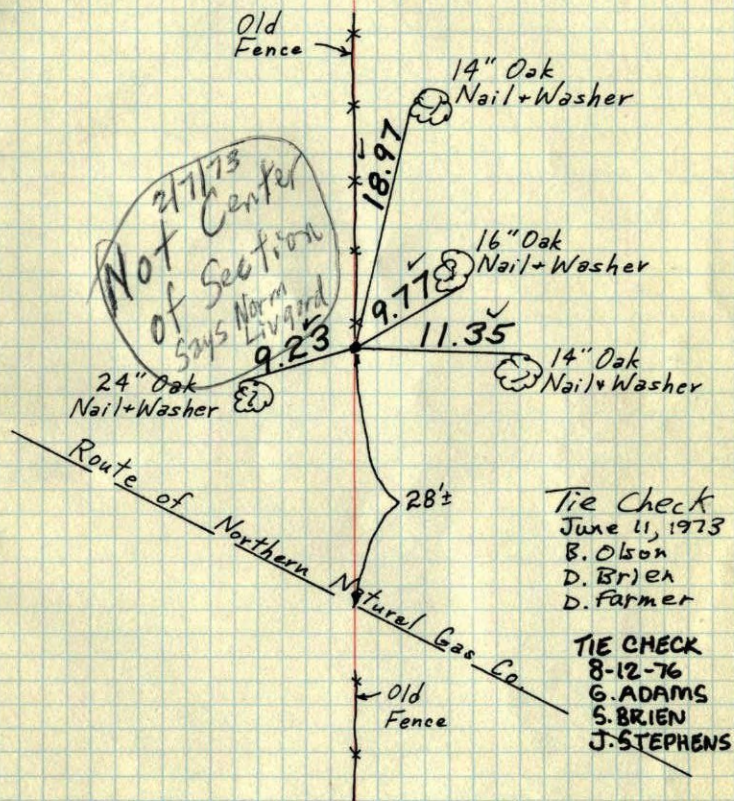


Center of Sec. 34-T32-R22

Tied RR Iron as center.

Nov. 25, 1970
H. Larson
W. Westlander



TEMPERATURE CORRECTED
AND HORIZONTALLY
TAPED MEASUREMENTS

ROLAND W. ANDERSON
COUNTY SURVEYOR
ANOKA COUNTY, MINNESOTA