

CERTIFICATE OF LOCATION OF GOVERNMENT CORNER
 County of Anoka State of Minnesota

Northeast Corner of Sec. 6 Township 32 Range 22

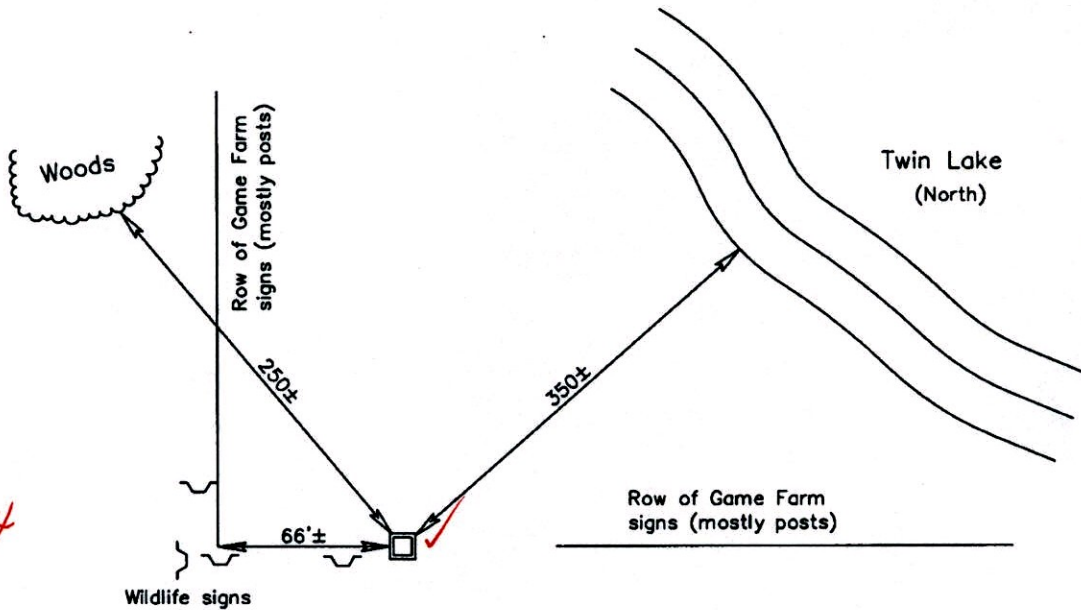
On the 7th day of March, 1977, the described corner was evidenced by a concrete monument

and to perpetuate the location of said corner, at the exact location thereof, a permanent marker was placed consisting of a red & white 2" square steel Telspar monument

SIGN UP 1'-1.5' SIGN ATTACHED FACING N.

AND on the 30th day of January, 2006, said permanent marker was found and the ties were updated

Updated reference ties are as shown below.



*BK-SS.
12-22-14*

Revised date

1985
1995
1/30/06

N.A.D. 1983 Coordinates
(1996 Adjustment)

County Project Coordinates	
Northing	<u>195553.2910</u>
Easting	<u>537319.0649</u>
Date	<u>5/11/05</u>

I hereby certify that this United States public land survey monument record is correct and complete to the best of my knowledge and belief.

Larry D. Hoium Date 1/30/06
 Larry D. Hoium, Anoka County Surveyor
 Minnesota License Number 18165

3D=0.08

N=195553.3162 E=537319.0327

CERTIFICATE OF LOCATION OF GOVERNMENT CORNER

County of Anoka

State of Minnesota

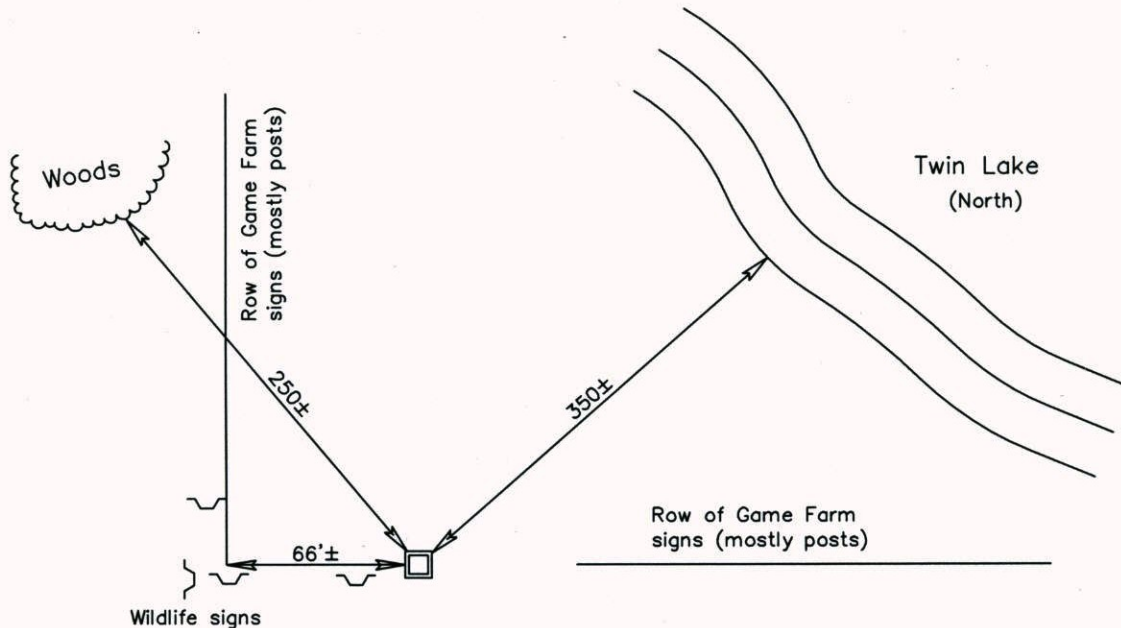
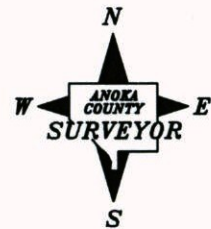
Northeast Corner of Sec. 6 Township 32 Range 22

On the 7th day of March, 1977, the described corner was evidenced by a concrete monument

and to perpetuate the location of said corner, at the exact location thereof, a permanent marker was placed consisting of a red & white 2" square steel Telspar monument

AND on the 30th day of January, 2006, said permanent marker was found and the ties were updated

Updated reference ties are as shown below.



Revised date
1985
1995
1/30/06

N.A.D. 1983 Coordinates (1996 Adjustment)	
County Project Coordinates	
Northing	195553.2910
Easting	537319.0649
Date	5/11/05

I hereby certify that this United States public land survey monument record is correct and complete to the best of my knowledge and belief.

Larry D. Hoium Date 1/30/06

Larry D. Hoium, Anoka County Surveyor

Minnesota License Number 18165

CERTIFICATE OF LOCATION OF GOVERNMENT CORNER

County of Anoka

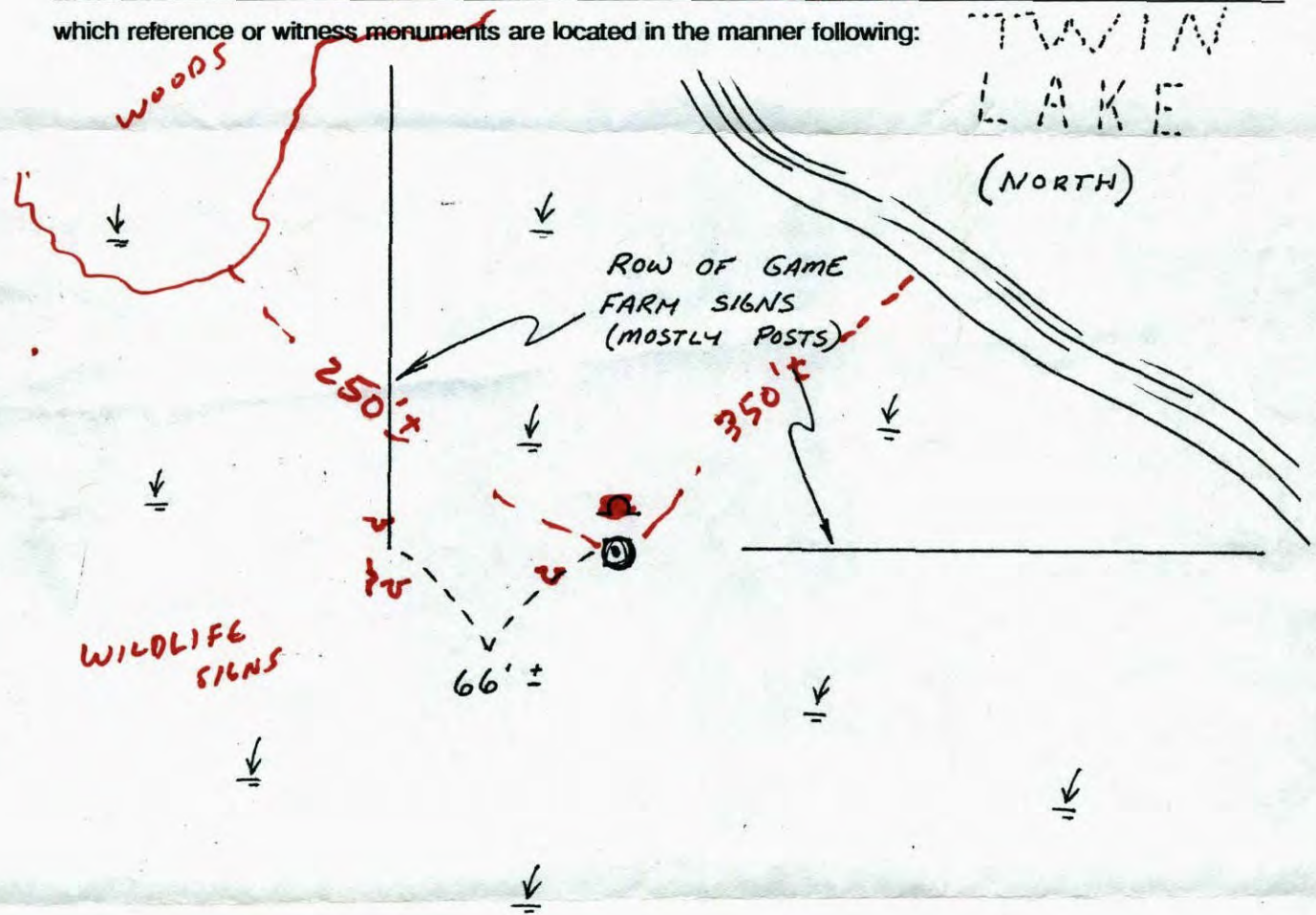
State of Minnesota

NORTHEAST Corner of Sec. 6 Township 32 Range 22

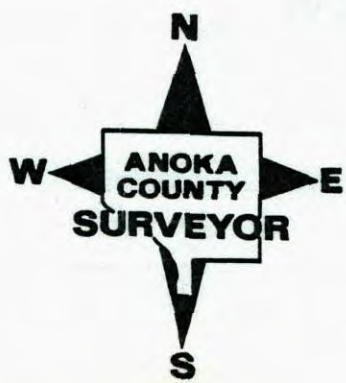
I hereby certify that on the 7 day of MARCH, 19 77, I found the described corner which was evidenced by CONCRETE MONUMENT

and I further certify that to perpetuate the location of said corner, I did, at the exact location thereof, place a permanent marker consisting of RED WHITE ~~IRON PIPE~~ TELSPOR

which reference or witness monuments are located in the manner following:



Revised date	Revised date	Revised date
8-13-85		
WET 95		



CERTIFICATE OF LOCATION OF GOVERNMENT CORNER

County of Anoka

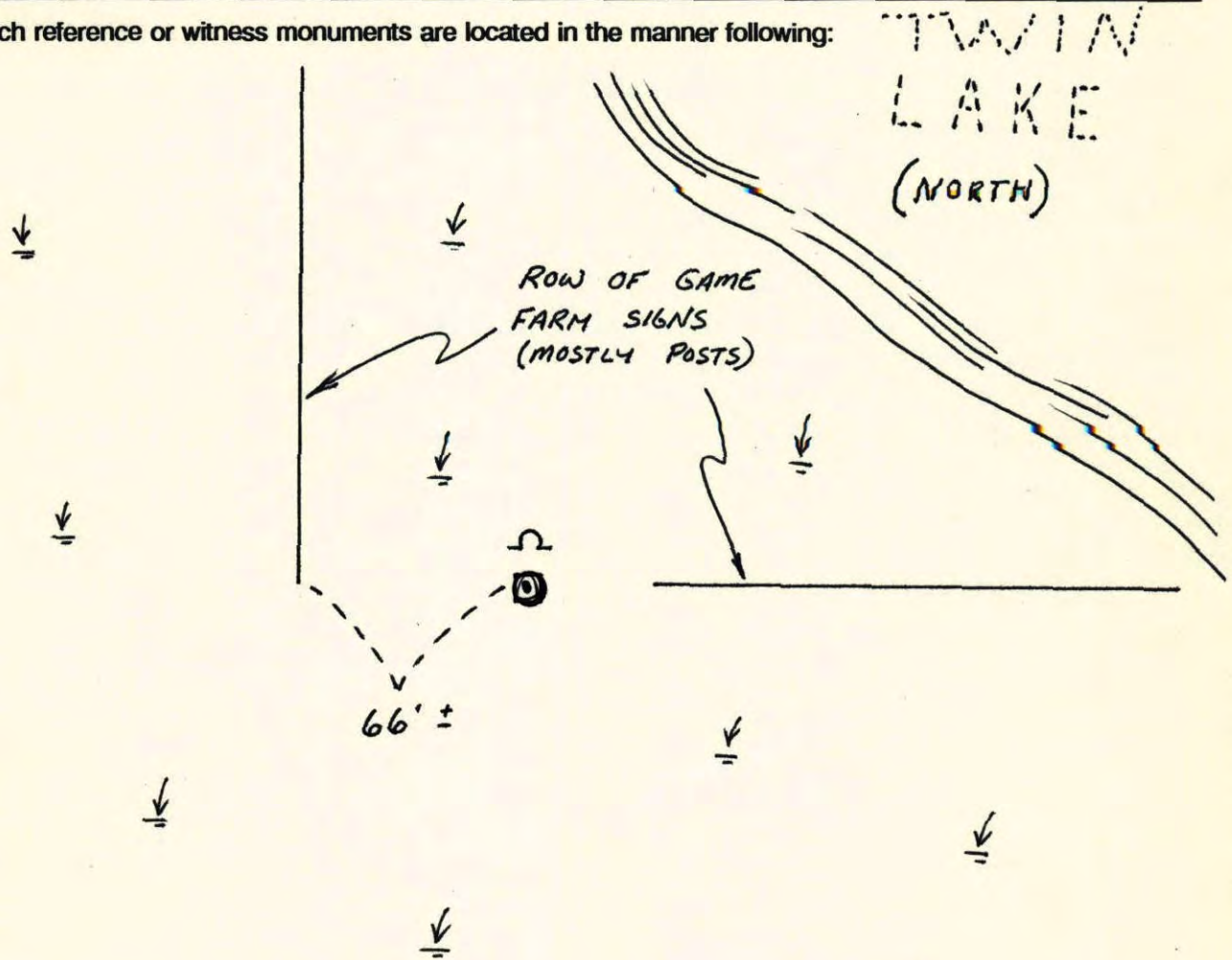
State of Minnesota

NORTHEAST Corner of Sec. 6 Township 32 Range 22

I hereby certify that on the 7 day of MARCH, 1977, I found the described corner which was evidenced by CONCRETE MONUMENT

and I further certify that to perpetuate the location of said corner, I did, at the exact location thereof, place a permanent marker consisting of RED WHITE IRON PIPE

which reference or witness monuments are located in the manner following:

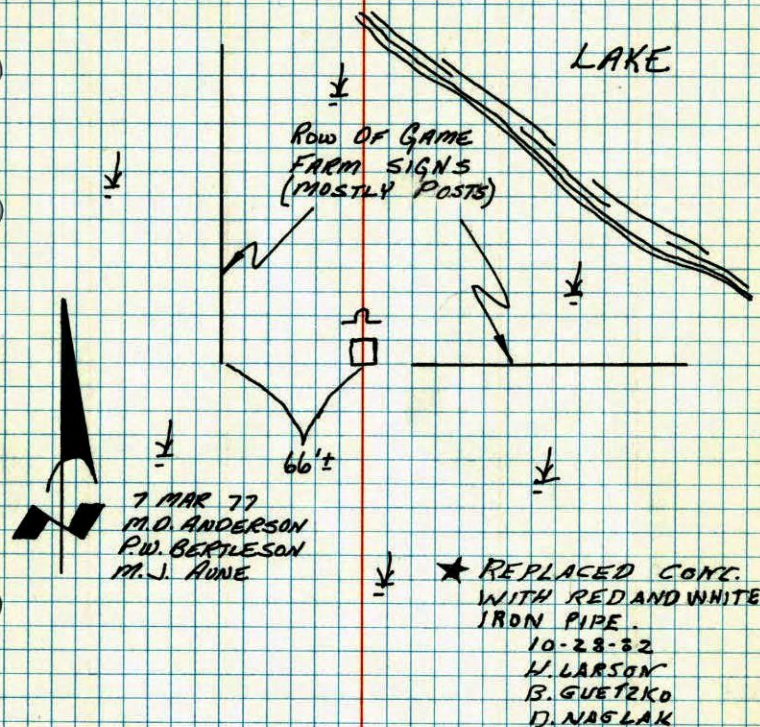


Revised date	Revised date	Revised date
8-13-85		
WET 95		



N.E. CORNER, SECTION 6-T32-R22

FOUND CONCRETE MONUMENT (FLUSH IN SWAMP)

PLACED WARNING SIGN & STEEL POST 1'± NORTH
OF CONCRETE.TEMPERATURE CORRECTED
AND HORIZONTALLY
TAPED MEASUREMENTSROLAND W. ANDERSON
COUNTY SURVEYOR
ANOKA COUNTY, MINNESOTA

N.E. Cor. Sec. 6-T32-R22

found conc. Mon. (flush in swamp)

Placed warning sign & steel post 1'± N. of conc.

