

CERTIFICATE OF LOCATION OF GOVERNMENT CORNER

County of Anoka State of Minnesota

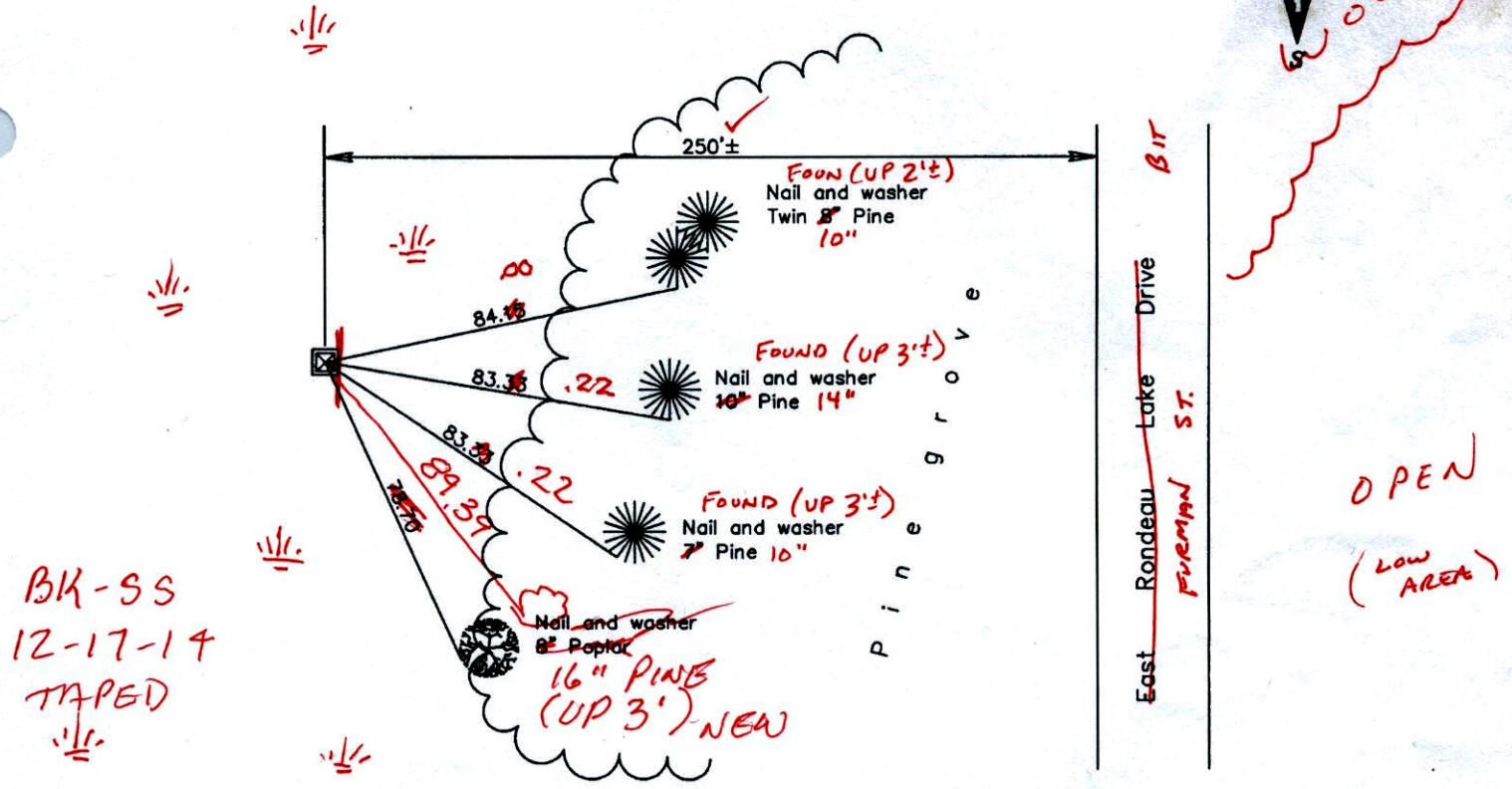
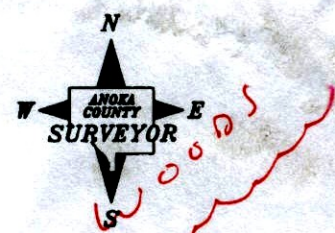
West 1/4 Corner of Sec. 35 Township 32 Range 22

On the 14th day of January, 1974, the described corner was evidenced by a 1" iron pipe set by N.C. Hoium

and to perpetuate the location of said corner, at the exact location thereof, a permanent marker was placed consisting of a red and white 2" square steel Telspar monument with a sign attached
SLIGHT LEAN EASTERLY (UP 3' +/-)
SIGN ATTACHED TO TELES PAR FACING EAST

AND on the 24th day of January, 2006, said permanent marker was found and the ties were updated

Updated reference ties are as shown below.



Revised date
12/01/92
8/23/95
1/24/06

N.A.D. 1983 Coordinates (1996 Adjustment)	
County Project Coordinates	
Northing	166802.9263
Easting	553135.4901
Date	1/24/06

I hereby certify that this United States public land survey monument record is correct and complete to the best of my knowledge and belief.

Larry D. Hoium Date 1/24/06

Larry D. Hoium, Anoka County Surveyor

Minnesota License Number 18165

3D=0.06

N = 166802.8490

E = 553135.6029

CERTIFICATE OF LOCATION OF GOVERNMENT CORNER

County of Anoka

State of Minnesota

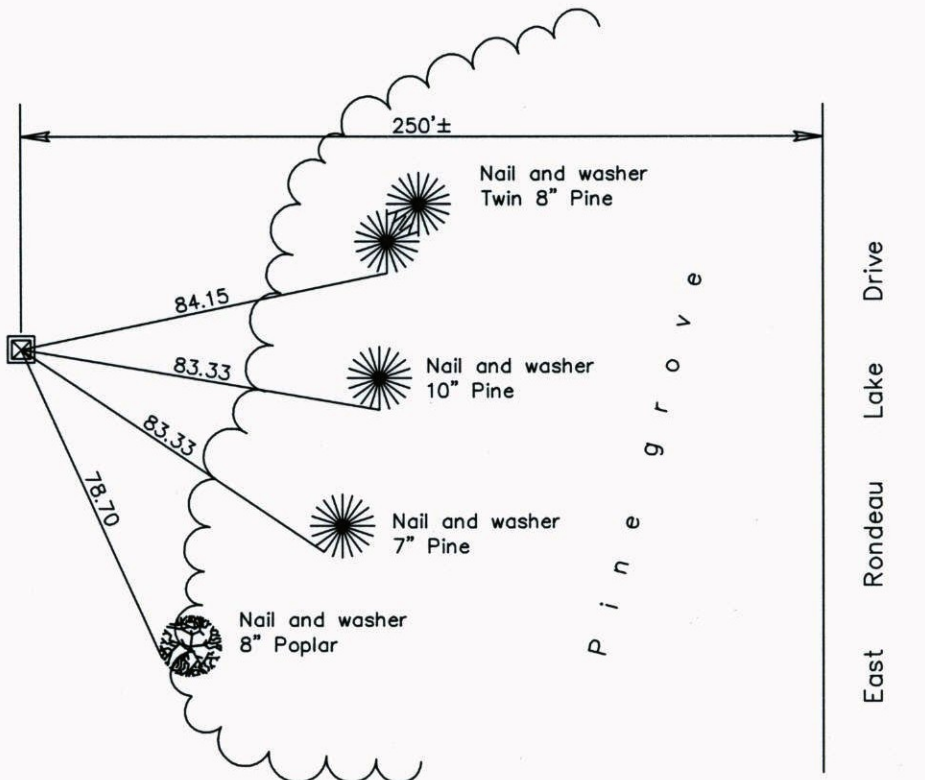
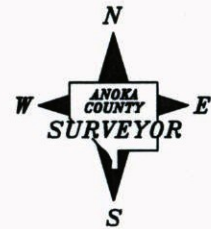
West 1/4 Corner of Sec. 35 Township 32 Range 22

On the 14th day of January, 1974, the described corner was evidenced by a 1" iron pipe set by N.C. Hoium

and to perpetuate the location of said corner, at the exact location thereof, a permanent marker was placed consisting of a red and white 2" square steel Telspar monument with a sign attached

AND on the 24th day of January, 2006, said permanent marker was found and the ties were updated

Updated reference ties are as shown below.



Revised date
12/01/92
8/23/95
1/24/06

N.A.D. 1983 Coordinates (1996 Adjustment)	
County Project Coordinates	
Northing	<u>166802.9263</u>
Easting	<u>553135.4901</u>
Date	<u>1/24/06</u>

I hereby certify that this United States public land survey monument record is correct and complete to the best of my knowledge and belief.

Larry D. Hoium Date 1/24/06

Larry D. Hoium, Anoka County Surveyor

Minnesota License Number 18165

CERTIFICATE OF LOCATION OF GOVERNMENT CORNER

County of Anoka

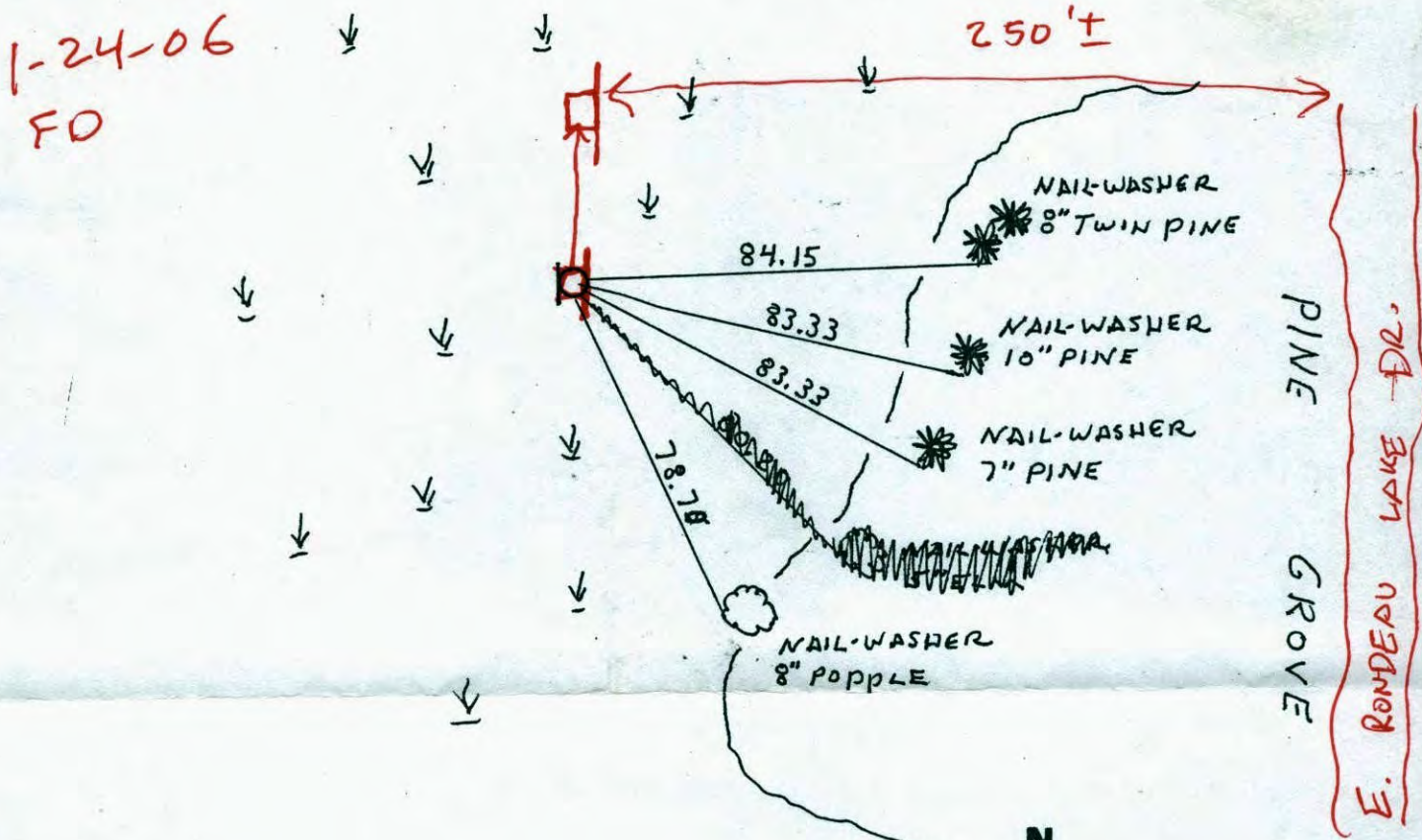
State of Minnesota

WEST 1/4 Corner of Sec. 35 Township 32 Range 22

I hereby certify that on the 14TH day of JAN, 1974, I found the described corner which was evidenced by 1" IRON PIPE SET BY N.C. HOIUM

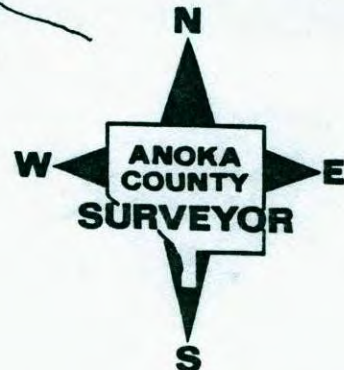
and I further certify that to perpetuate the location of said corner, I did, at the exact location thereof, place a permanent marker consisting of RED AND WHITE IRON PIPE WITH SIGN TELSPAR

which reference or witness monuments are located in the manner following:



Revised date Revised date Revised date

12-1-92 WL		
8-23-95		



CERTIFICATE OF LOCATION OF GOVERNMENT CORNER

County of Anoka

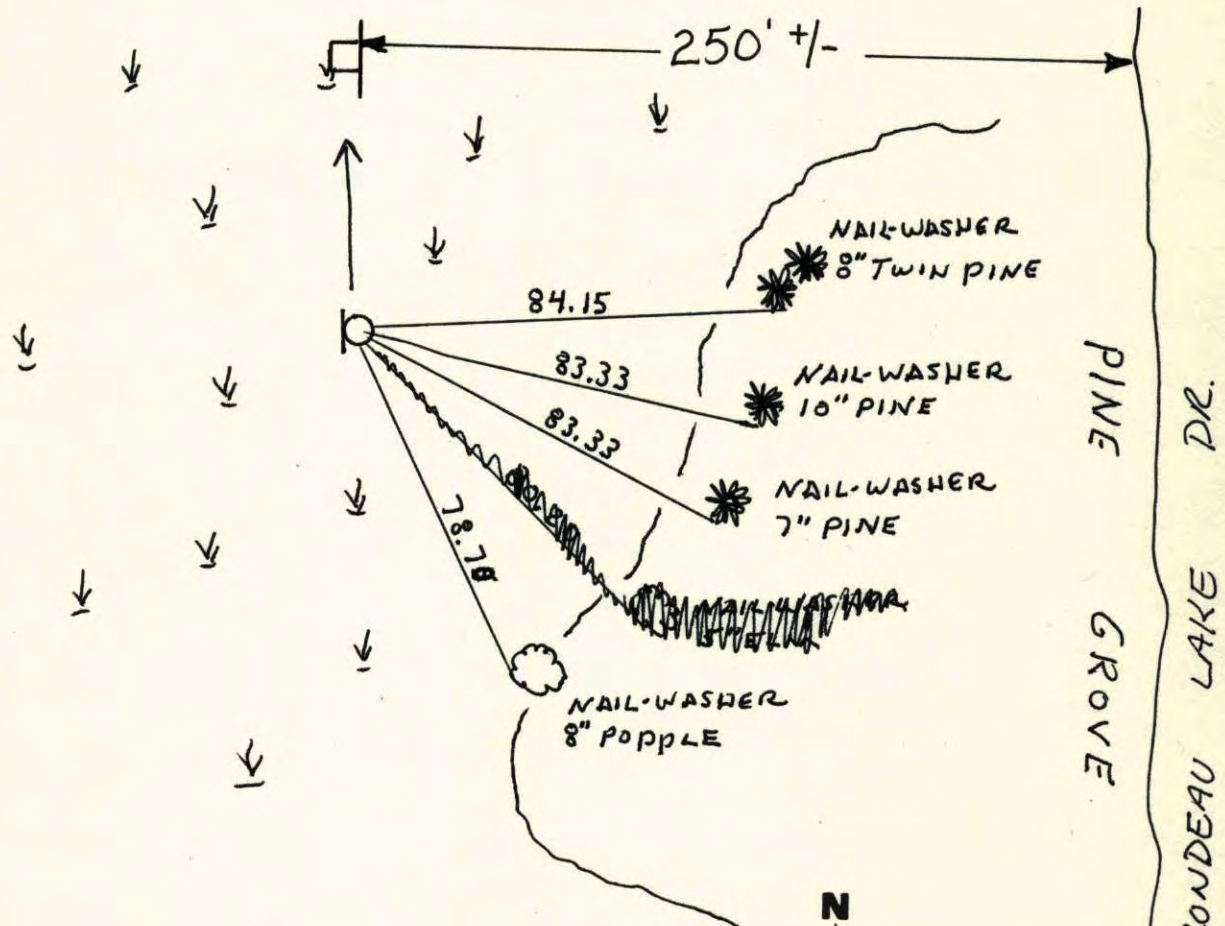
State of Minnesota

WEST 1/4 Corner of Sec. 35 Township 32 Range 22

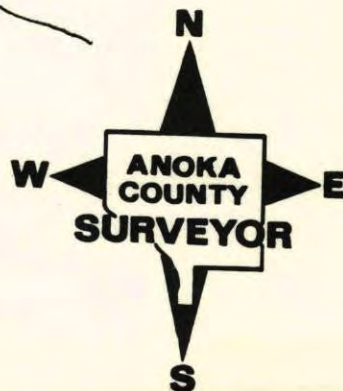
I hereby certify that on the 14TH day of JAN, 1974, I found the described corner which was evidenced by 1" IRON PIPE SET BY N.C. HOIUM

and I further certify that to perpetuate the location of said corner, I did, at the exact location thereof, place a permanent marker consisting of RED AND WHITE IRON PIPE WITH SIGN

which reference or witness monuments are located in the manner following:



Revised date	Revised date	Revised date
12-1-92 HL		
8-23-95		
1-24-06		



WEST 1/4 COR SECTION 35 T32 R22

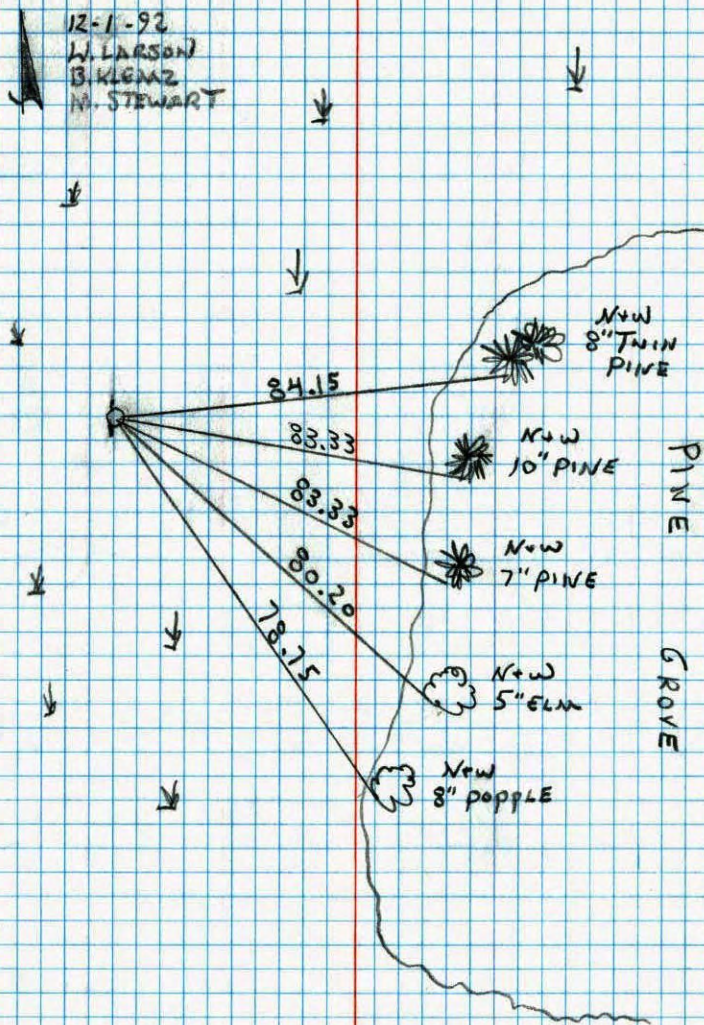
RETIED RED AND WHITE IRON PIPE
WITH SIGN.

12-1-92

W. LARSON

B. KLEMZ

M. STEWART

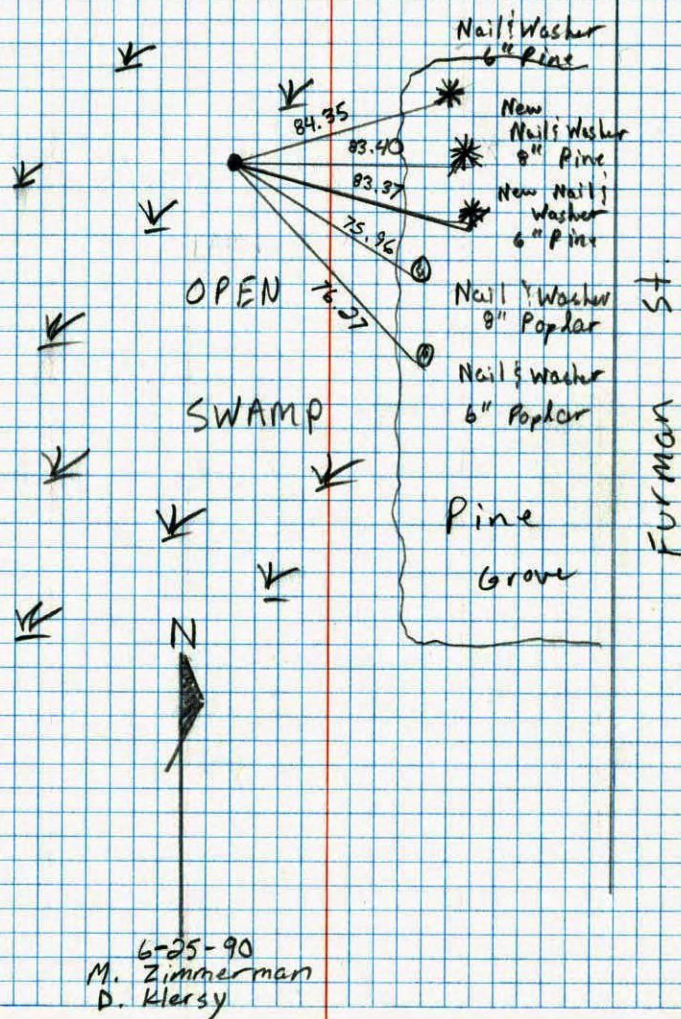


NO. 448

TELEPHONE

West 1/4 Corner Sec. 35 T32 R22

Retied Red & White Iron Pipe



NO. 448

TELEPHONE

6-25-90
M. Zimmerman
D. Kleszy

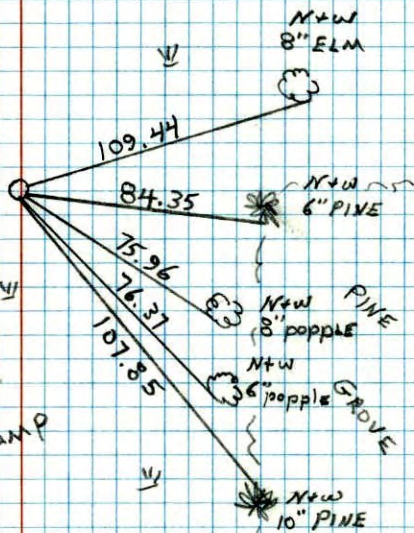
WEST 1/4 CORNER SECTION 35 T32 R22

FOUND IRON PIPE STILL STANDING, TIES
GONE. REPLACED WITH RED AND WHITE
IRON PIPE AND RETIED.

#3 25°
12-23-85
N. LARSON
G. GUETRKO
H. GRAMS

OPEN

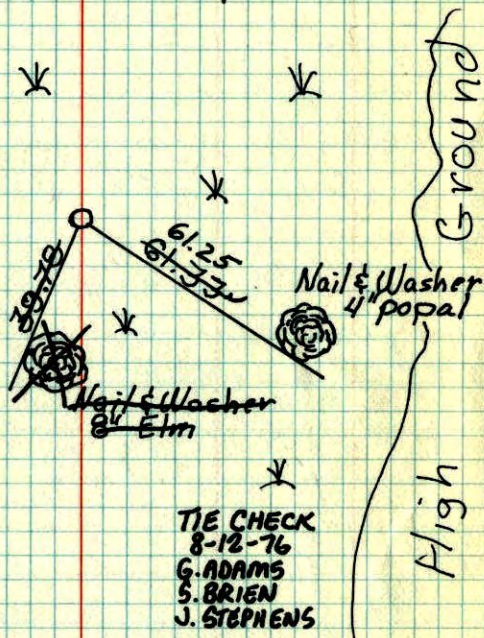
SWAMP



W 1/4 Cor. Sec. 35, T32 R22

Found 1" iron pipe set by N.C. Hoium.
(up 2.5'±)

Jan 14, 1974
H. Larson
J. Boettcher
D. Farmer



TIE CHECK
8-12-76
G. ADAMS
S. BRIEN
J. STEPHENS

TIE CHECK
8-3-79
B. STEPHENS
D. STEPHENS
P. ROSS
TAPE #2, 73°

High Ground

ROLAND W. ANDERSON
COUNTY SURVEYOR
ANOKA COUNTY, MINNESOTA

TEMPERATURE CORRECTED
AND HORIZONTALLY
TAPED MEASUREMENTS

W 1/4 Cor. Sec. 35 T32 R22

1" Iron pipe set by N. C. Howm.

4p 2.5'±

1-14-74

25°

H. Larson

J. Beattcher

D. Farmer

