

CERTIFICATE OF LOCATION OF GOVERNMENT CORNER

County of Anoka

State of Minnesota

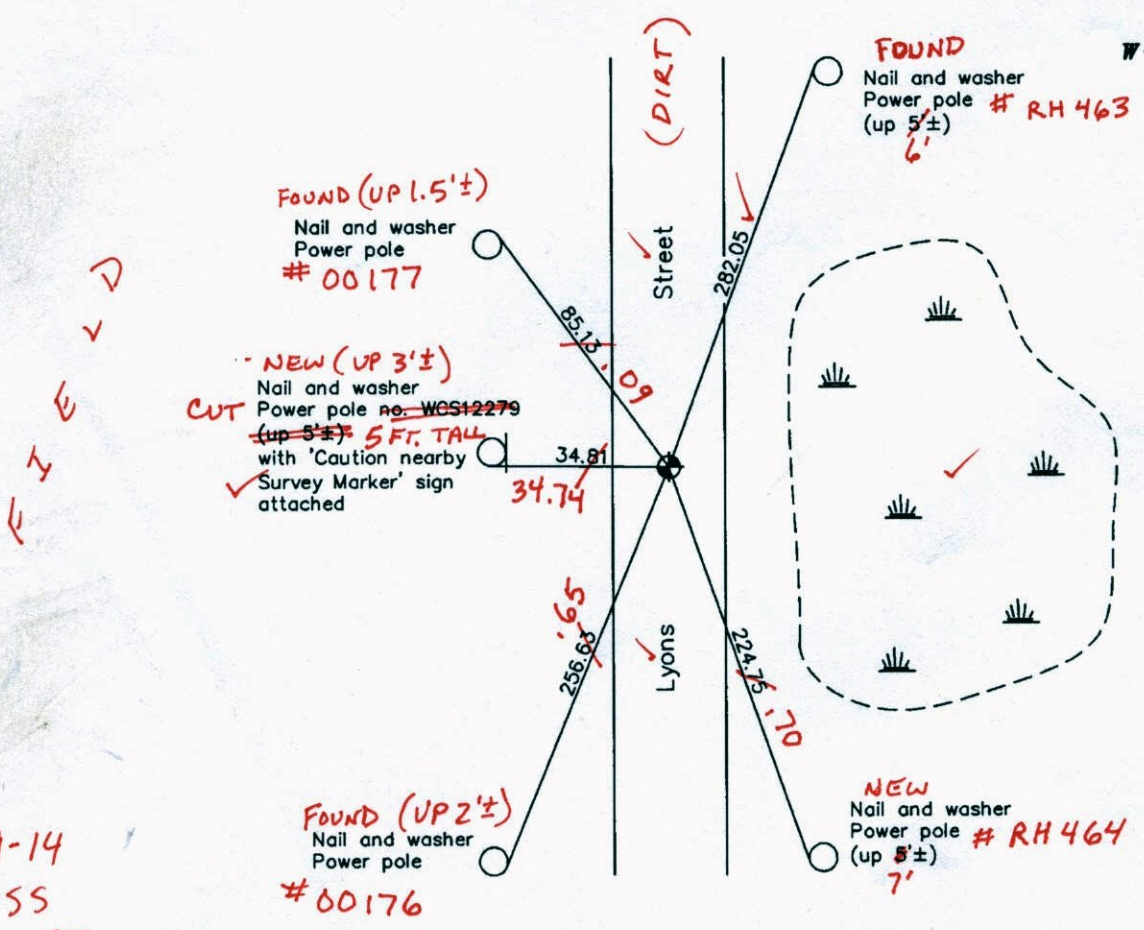
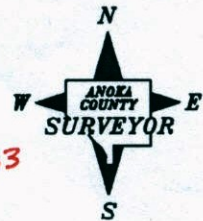
East 1/4 Corner of Sec. 36 Township 32 Range 22

On the 9th day of July, 1974, the described corner was evidenced by a 1/2" iron pipe set by D. Hult and D. Pepper

and to perpetuate the location of said corner, at the exact location thereof, a permanent marker was placed consisting of a cast iron monument down 0.5'± (NEAR E)

AND on the 9th day of April, 2008, said permanent marker was found and the ties were updated

Updated reference ties are as shown below.



9-19-14
BK-55
TOTAL STA.
VRS

Revised date
5/11/89
8/25/95
4/09/08

N.A.D. 1983 Coordinates (1996 Adjustment)	
County Project Coordinates	
Northing	166748.2803
Easting	563651.0535
Date	6/18/03

I hereby certify that this United States public land survey monument record is correct and complete to the best of my knowledge and belief.

Larry D. Hoium Date 4/09/08
 Larry D. Hoium, Anoka County Surveyor
 Minnesota License Number 18165

3DQ = 0.06 N = 166748.2890 E = 563650.8385

CERTIFICATE OF LOCATION OF GOVERNMENT CORNER

County of Anoka

State of Minnesota

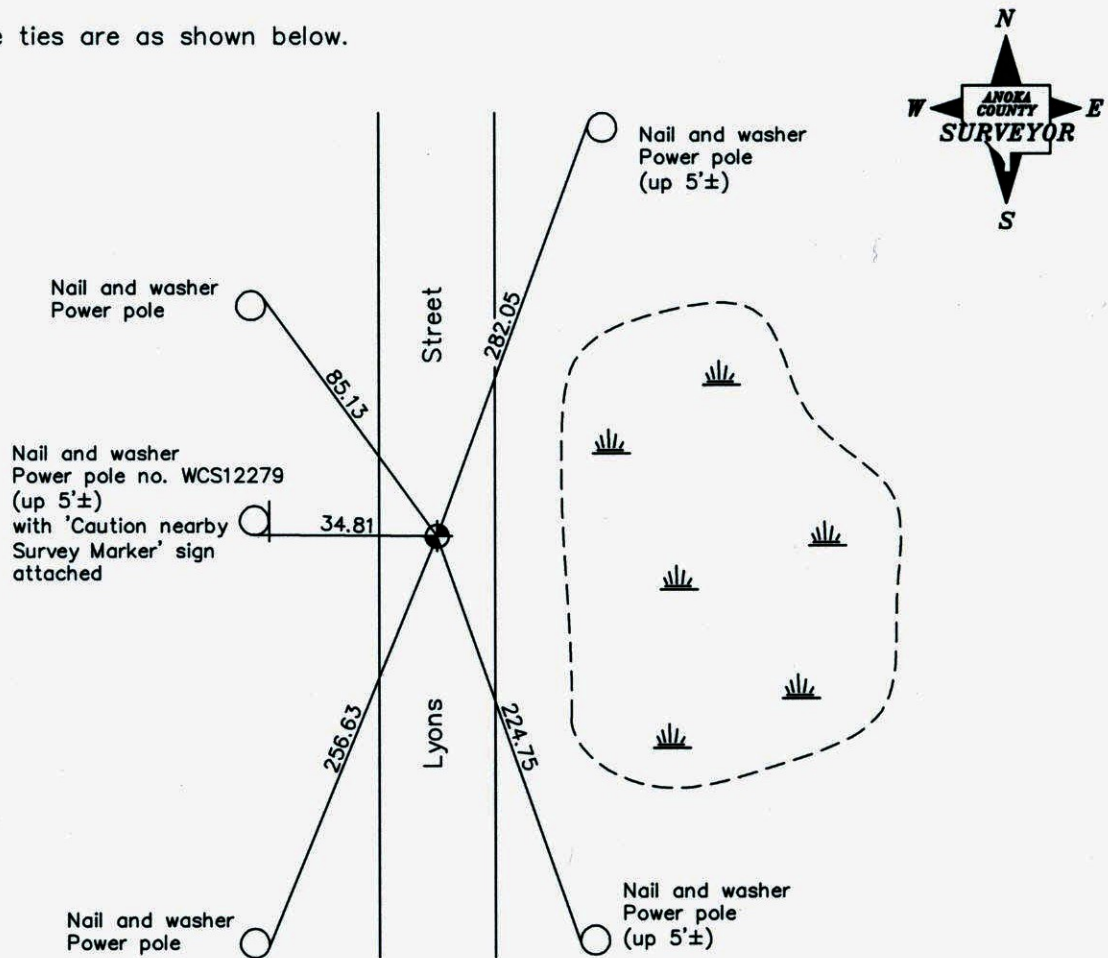
East 1/4 Corner of Sec. 36 Township 32 Range 22

On the 9th day of July, 1974, the described corner was evidenced by a 1/2" iron pipe set by D. Hult and D. Pepper

and to perpetuate the location of said corner, at the exact location thereof, a permanent marker was placed consisting of a cast iron monument down 0.5'±

AND on the 9th day of April, 2008, said permanent marker was found and the ties were updated

Updated reference ties are as shown below.



Revised date

5/11/89
8/25/95
4/09/08

N.A.D. 1983 Coordinates
(1996 Adjustment)

County Project Coordinates	
Northing	<u>166748.2803</u>
Easting	<u>563651.0535</u>
Date	<u>6/18/03</u>

I hereby certify that this United States public land survey monument record is correct and complete to the best of my knowledge and belief.

Larry D. Hoium Date 4/09/08
 _____, Anoka County Surveyor
 Minnesota License Number 18165

CERTIFICATE OF LOCATION OF GOVERNMENT CORNER

County of Anoka

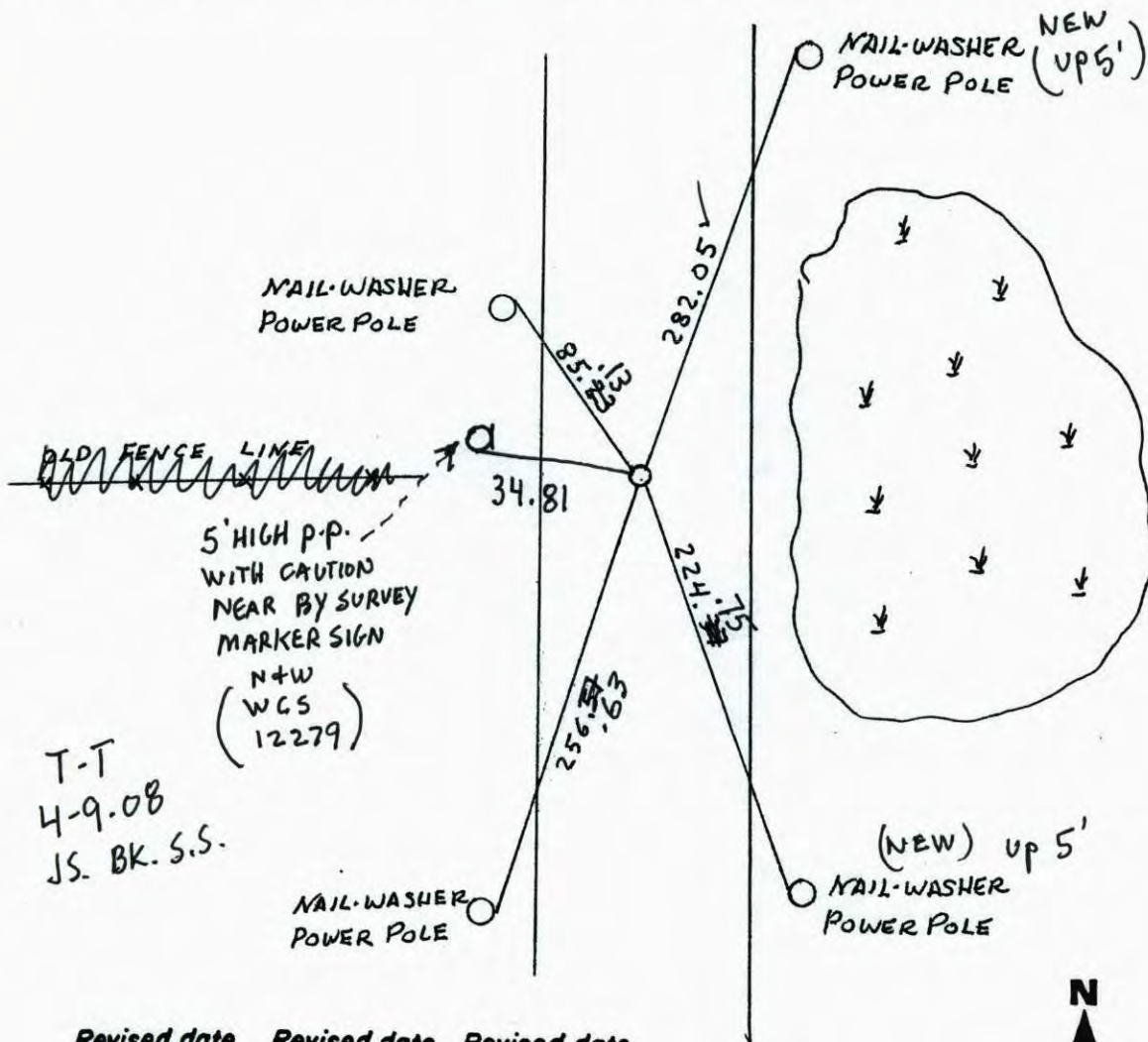
State of Minnesota

EAST 1/4 Corner of Sec. 36 Township 32 Range 22

I hereby certify that on the 9 day of JULY, 1974, I found the described corner which was evidenced by 1/2" I.P. SET BY D. HULT AND D. PEPPER

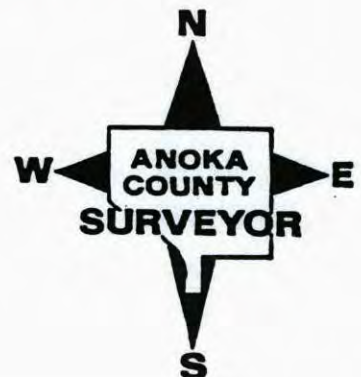
and I further certify that to perpetuate the location of said corner, I did, at the exact location thereof, place a permanent marker consisting of CAST IRON MONUMENT DOWN .5'±

which reference or witness monuments are located in the manner following:



T-T
4-9-08
JS. BK. S.S.

Revised date	Revised date	Revised date
7-9-74 HL		
2-4-77 HL		
8-2-79		
7-8-82		
8-9-85		
5-11-89 HL		
8-25-95		



CERTIFICATE OF LOCATION OF GOVERNMENT CORNER

County of Anoka

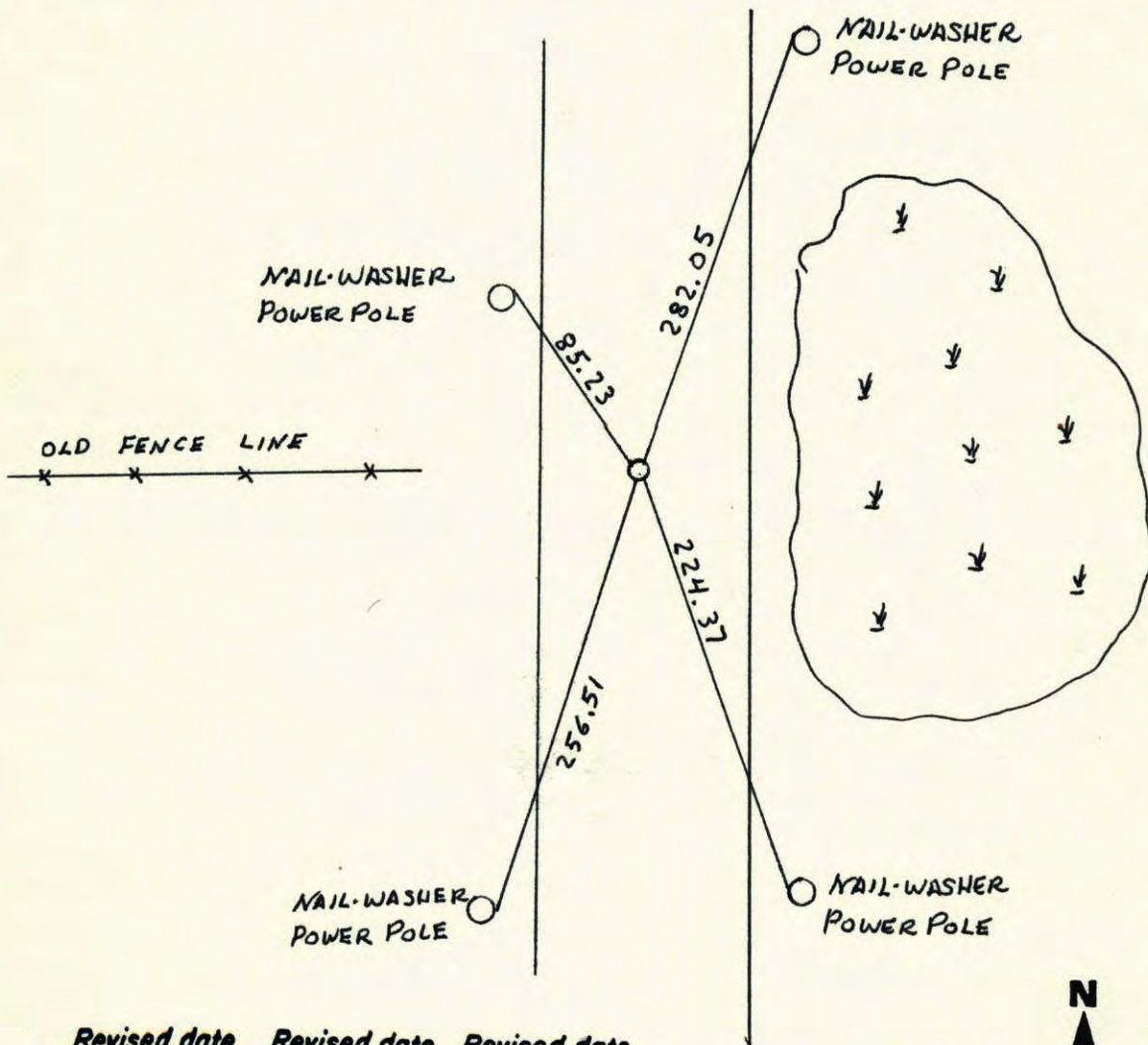
State of Minnesota

EAST 1/4 Corner of Sec. 36 Township 32 Range 22

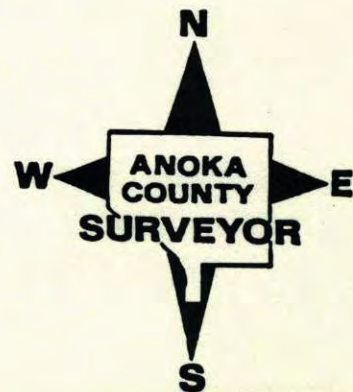
I hereby certify that on the 9 day of JULY, 1974, I found the described corner which was evidenced by 1/2" I.P. SET BY D. HULT AND D. PEPPER

and I further certify that to perpetuate the location of said corner, I did, at the exact location thereof, place a permanent marker consisting of CAST IRON MONUMENT DOWN .5'±

which reference or witness monuments are located in the manner following:



Revised date	Revised date	Revised date
7-9-74 HL		
2-4-77 HL		
8-2-79		
7-8-82		
8-9-85		
5-11-89 HL		
8-25-95		



To RESET E¹/₄ COR., SECTION 36 T32 R22

SET E¹/₄ COR.

WALK AND ON
LINE

NE COR.

2374.81

POL

244.125

180°

E¹/₄ COR

2863.06

SE COR

H. LARSON
B. GUETZKO
J. STEVENSON
5-10-89

122
E¹/₄ COR. SEC. 36 - T32 - R22

FOUND AND TIED 1/2" IRON PIPE SET BY DAN

PEPPER AND DAN HULT. NAILS & DISKS FOR TIES

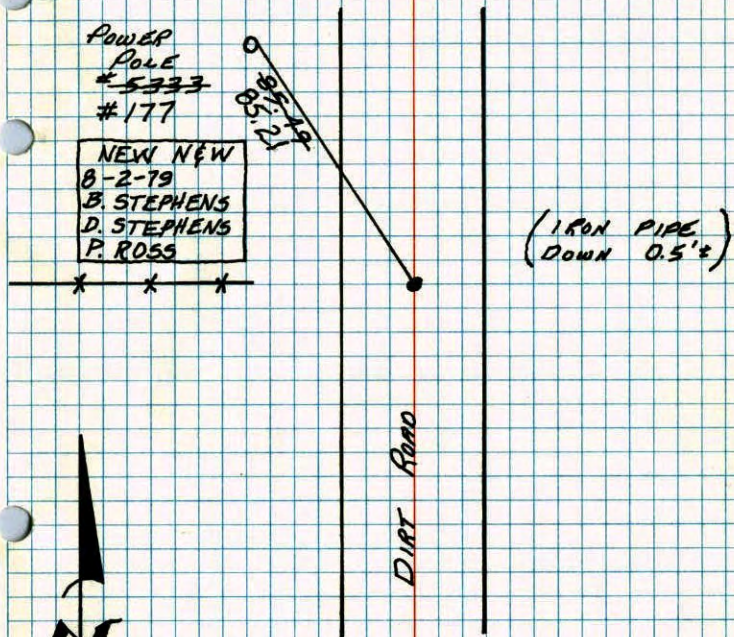
WITH REGISTRATION NUMBERS.

9 JUL 74

H. LARSON

J. BOETTCHER

B. SCHAFER



CHECKED
4 FEB 77

FOUND IRON OK

H. LARSON

B. GUETZKO

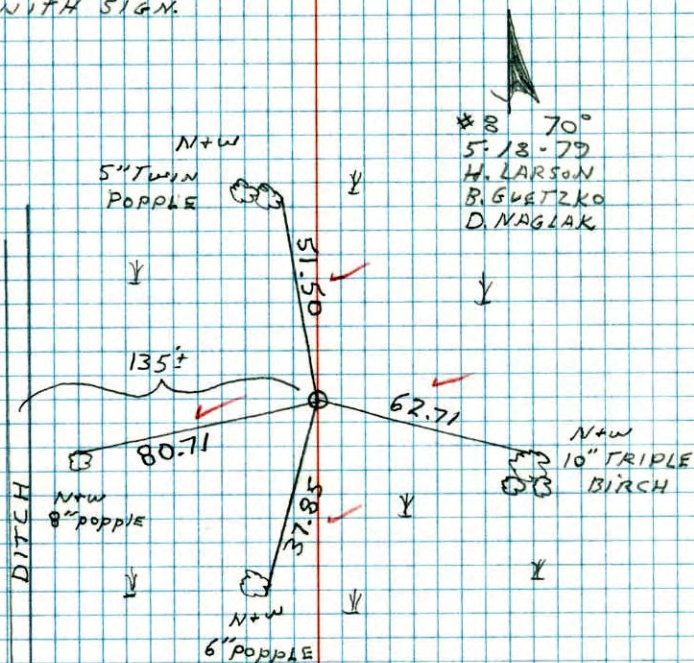
J. BOETTCHER

TEMPERATURE CORRECTED
AND HORIZONTALLY
TAPED MEASUREMENTS

ROLAND W. ANDERSON
COUNTY SURVEYOR
ANOKA COUNTY, MINNESOTA

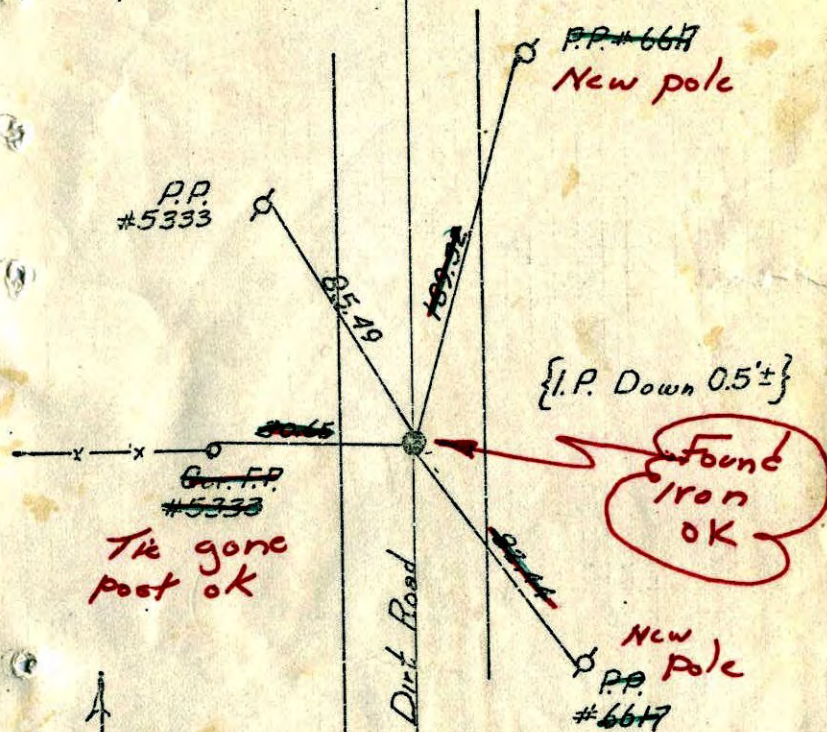
E 1/4 COR. SECTION 36 T32 R23

RESET RED AND WHITE IRON PIPE
FROM INCORRECT LOCATION. I.P. UP 3'
WITH SIGN.



E 1/4 Cor. Sec. 36 - T32 - R22

Found & Tied 1/2" Iron Pipe Set By D. Pepper & D. Hult
Nails & Disks For Ties With Registration Numbers.



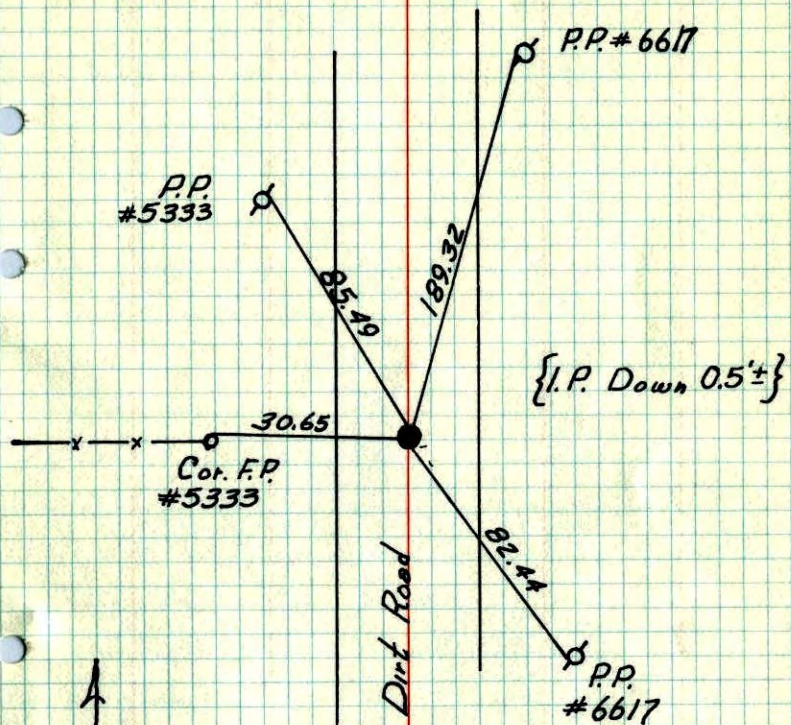
7-9-1974
H. Larson
J. Boettcher
B. Schaffer
Temp. 95°
Tape #14
8-13-76
B. Adams
S. Brien
J. Stephens
T-80°
found one tie
couldn't find pipe

checked
2-4-77
H. Larson
B. Guetzko
S. Anderson
ROLAND W. ANDERSON
COUNTY SURVEYOR
ANOKA COUNTY, MINNESOTA
TEMPERATURE CORRECTED
AND HORIZONTALLY
TAPED MEASUREMENTS

E 1/4 Cor. Sec. 36 - T32 - R22

Found & Tied 1/2" Iron Pipe Set By D. Pepper & D. Hult

Nails & Disks For Ties With Registration Numbers.



7-9-1974

H. Larson
 J. Boettcher
 B. Schaffer
 Temp. 95°
 Tape #14

ROLAND W. ANDERSON
 COUNTY SURVEYOR
 ANOKA COUNTY, MINNESOTA

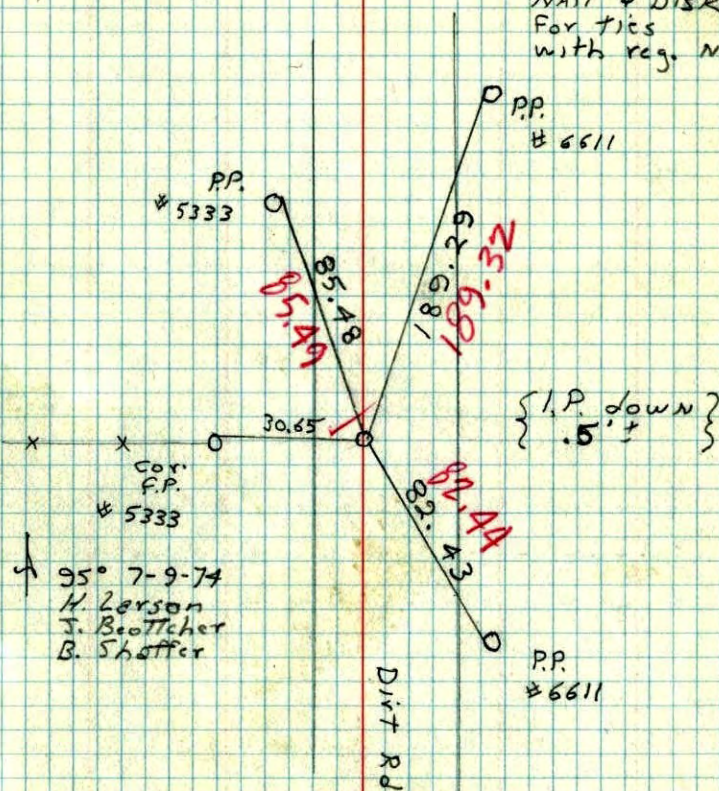
TEMPERATURE CORRECTED
 AND HORIZONTALLY
 TAPED MEASUREMENTS

E 1/4 Cor. Sec. 36 T32 R22

Found and tied 1/2" iron pipe set

by D. Pepper. + D. Hult.

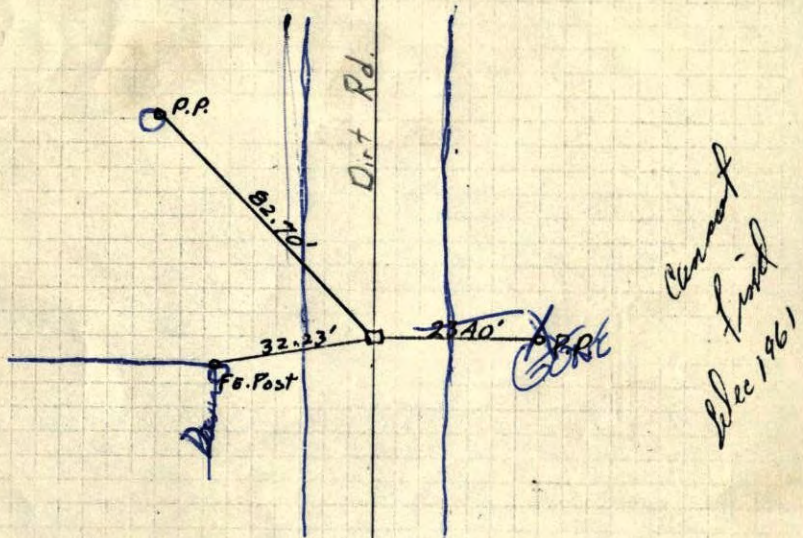
NAIL + DISKS
 FOR TIES
 WITH REG. NO'S



Columbus

E 1/4 COR. SEC. 36, T 32, R 22

Assumed sharpened Post Buried
vertically in Road



Set Bridge
Spike down
0.2'± from
2 remaining
ties,

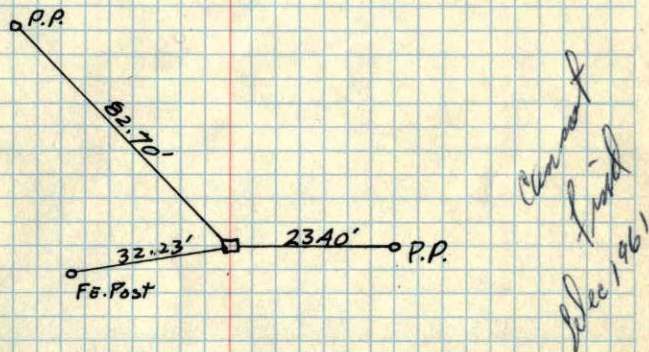
Could
not
find post.
8/23/68
D. Powell
R. Olson
P. Path
M.H.D

Not In Tice Book

Columbus

E 1/4 COR. SEC. 36, T 32, R 22

Assumed sharpened Post Buried
vertically in Road



M.H.D

E 1/4 Corner of Sec 36-32-22

