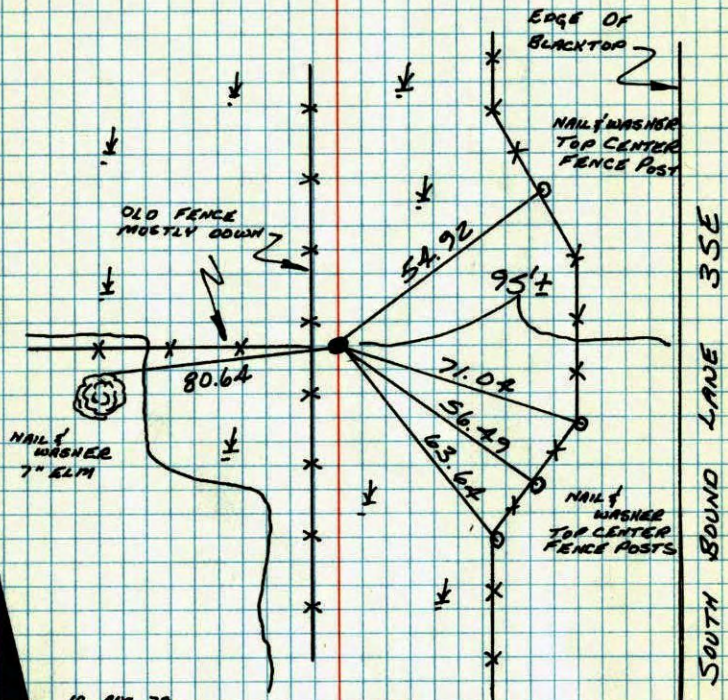


S 1/4 CORNER SECTION 36-T32-R22

REMOVED RED AND WHITE IRON PIPE SET FROM AREA RESURVEY ON 10 JUL 74 BY H. LARSON. IRON PIPE UP 3' ±.



10 AUG 79
B. STEPHENS
D. STEPHENS
P. ROSS

TEMPERATURE CORRECTED
AND HORIZONTALLY
TAPED MEASUREMENTS

ROLAND W. ANDERSON
COUNTY SURVEYOR
ANOKA COUNTY, MINNESOTA

Set Red & white iron pipe from area resurvey.

Iron Pipe Up 3' ±

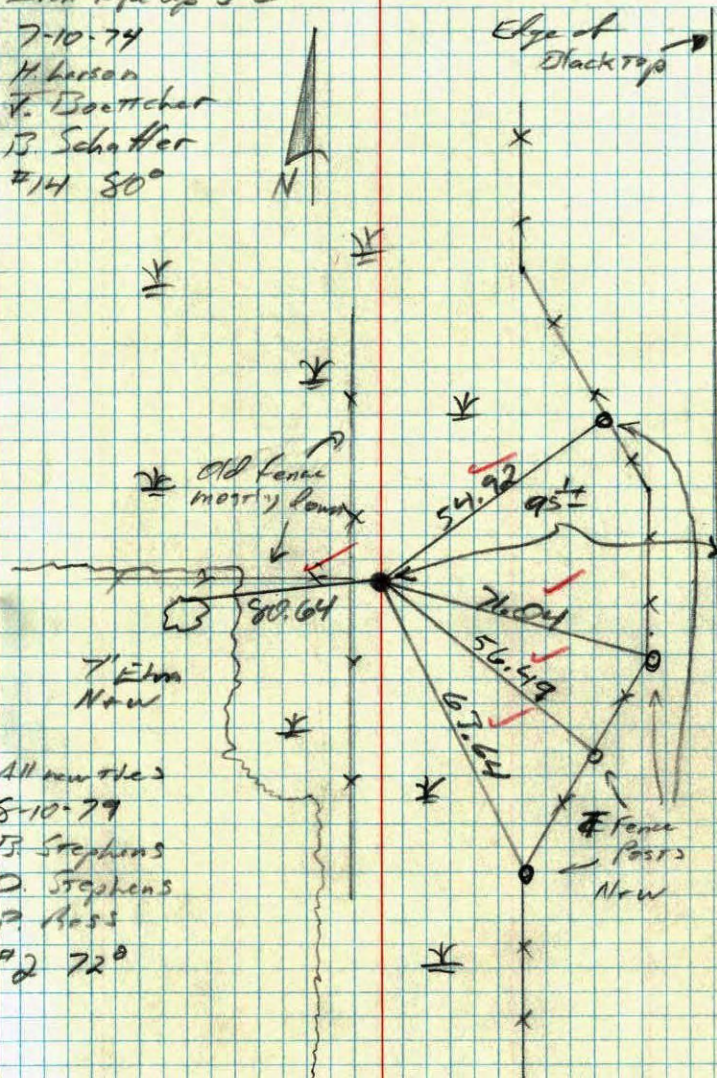
7-10-74

H. Larson

V. Baettcher

B. Schaffer

#14 80°



All new ties

8-10-79

B. Stephens

D. Stephens

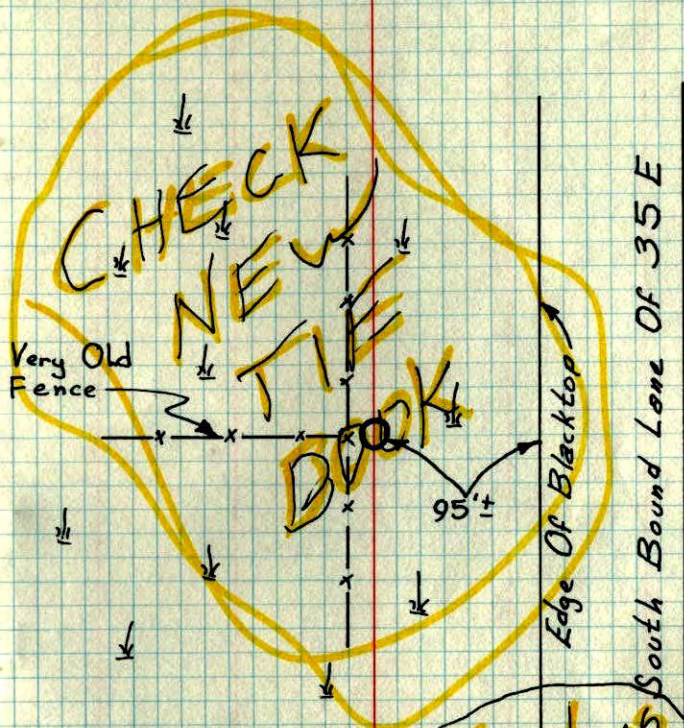
P. Ross

#2 72°

South Bound Lane of 35 E

S 1/4 Cor. Sec. 36-T32-R22

Set Red & White Iron Pipe From Area Resurvey
Iron Pipe Up 3'±



7-10-74
 H. Larson
 J. Boettcher
 B. Schaffer
 Temp. 80°
 Tape #14

B. Stephens
 10 AUG. 74
 B. STEPHENS
 P. STEPHENS
 P. ROSS

ROLAND W. ANDERSON
 COUNTY SURVEYOR
 ANOKA COUNTY, MINNESOTA

TEMPERATURE CORRECTED
 AND HORIZONTALLY
 TAPED MEASUREMENTS

S 1/4 Cor. Sec. 36, T32 R22

Set red and white iron pipe from
area resurvey. Ip. up 3'±

80° 7-10-74
 H. Larson
 J. Boettcher
 B. Schaffer

