

CERTIFICATE OF LOCATION OF GOVERNMENT CORNER
 County of Anoka State of Minnesota

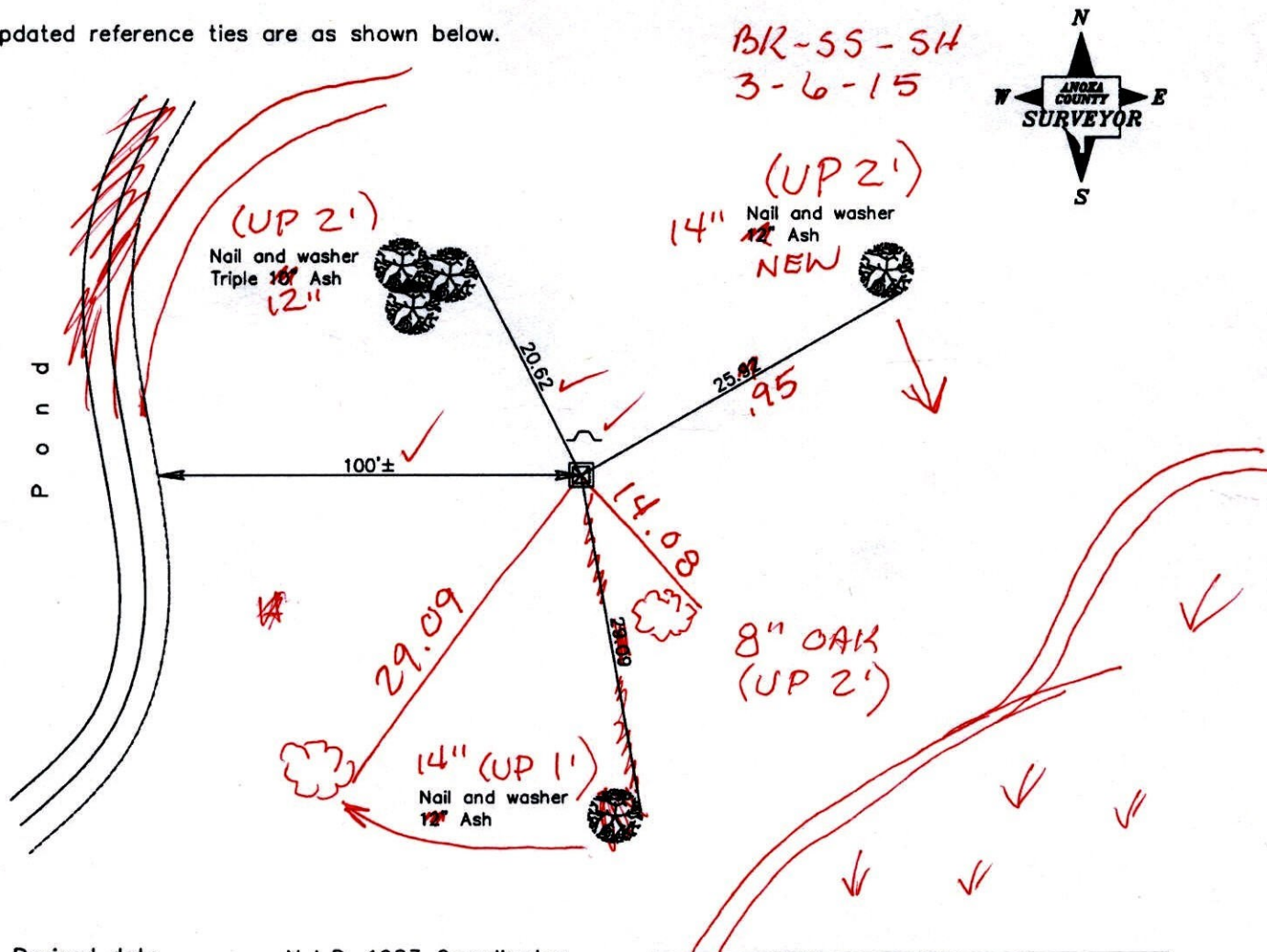
Northwest Corner of Sec. 20 Township 32 Range 22

On the 2nd day of April, 2003, the described corner was evidenced by area resurvey

and to perpetuate the location of said corner, at the exact location thereof, a permanent marker was placed consisting of a 1/2" iron pipe with a sign and post on the north side

AND on the 26th day of February, 2009, said permanent marker was replaced with a 2" square steel Telspar monument with a 'County Surveyor' cap and the sign and post on the north side

Updated reference ties are as shown below.



Revised date

4/02/03
2/26/09

N.A.D. 1983 Coordinates
(1996 Adjustment)

County Project Coordinates	
Northing	179917.9558
Easting	537387.2206
Date	4/02/03

I hereby certify that this United States public land survey monument record is correct and complete to the best of my knowledge and belief.

Larry D. Hoium Date 2/26/09
 Larry D. Hoium, Anoka County Surveyor
 Minnesota License Number 18165

3D=0.05

N = 179917.9379 E = 537387.1775

CERTIFICATE OF LOCATION OF GOVERNMENT CORNER

County of Anoka

State of Minnesota

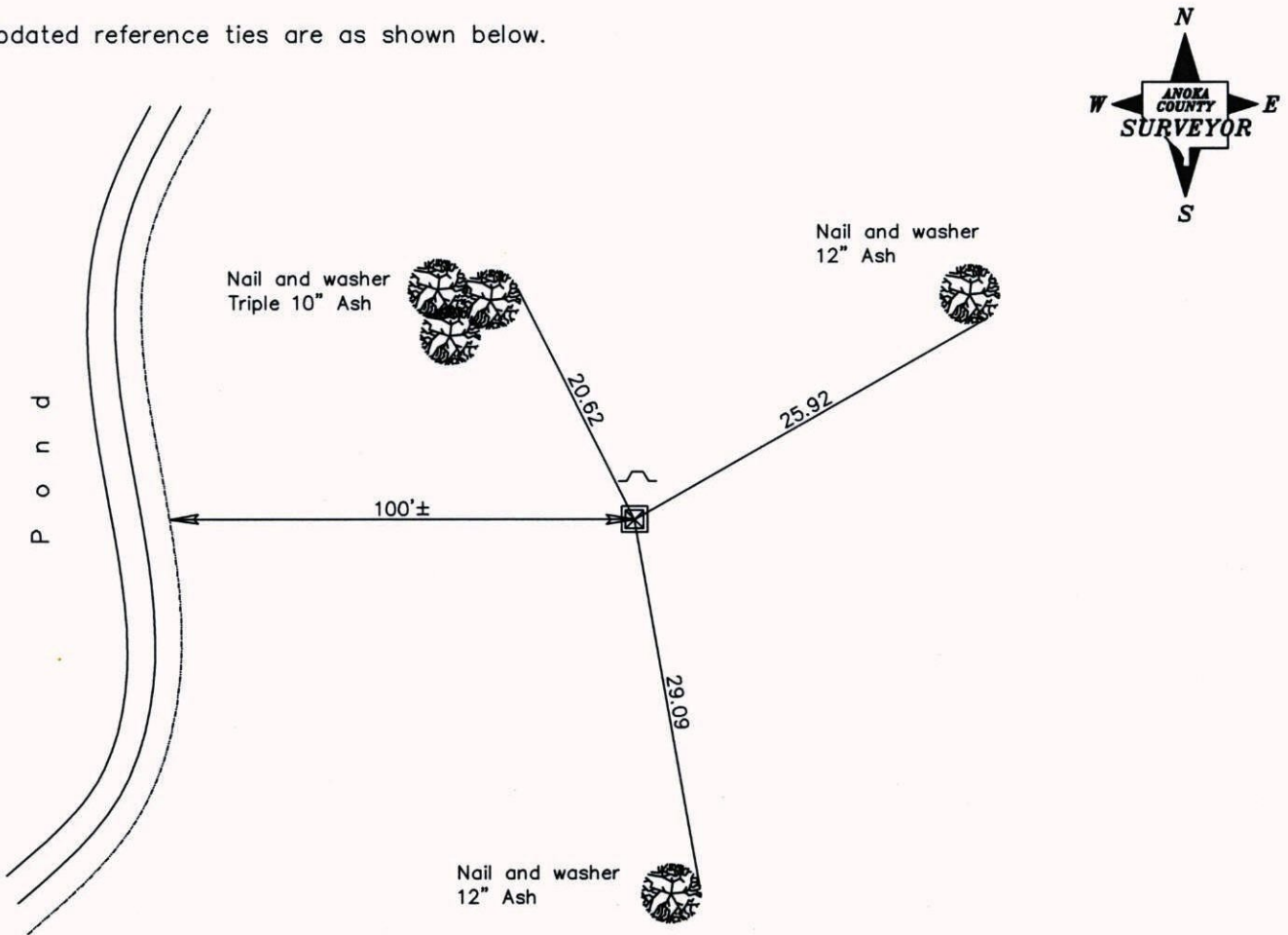
Northwest Corner of Sec. 20 Township 32 Range 22

On the 2nd day of April, 2003, the described corner was evidenced by area resurvey

and to perpetuate the location of said corner, at the exact location thereof, a permanent marker was placed consisting of a 1/2" iron pipe with a sign and post on the north side

AND on the 26th day of February, 2009, said permanent marker was replaced with a 2" square steel Telspar monument with a 'County Surveyor' cap and the sign and post on the north side

Updated reference ties are as shown below.



Revised date
4/02/03
2/26/09

N.A.D. 1983 Coordinates (1996 Adjustment)	
County Project Coordinates	
Northing	179917.9558
Easting	537387.2206
Date	4/02/03

I hereby certify that this United States public land survey monument record is correct and complete to the best of my knowledge and belief.

Larry D. Hoium Date 2/26/09

Larry D. Hoium, Anoka County Surveyor

Minnesota License Number 18165