

CERTIFICATE OF LOCATION OF GOVERNMENT CORNER

County of Anoka State of Minnesota

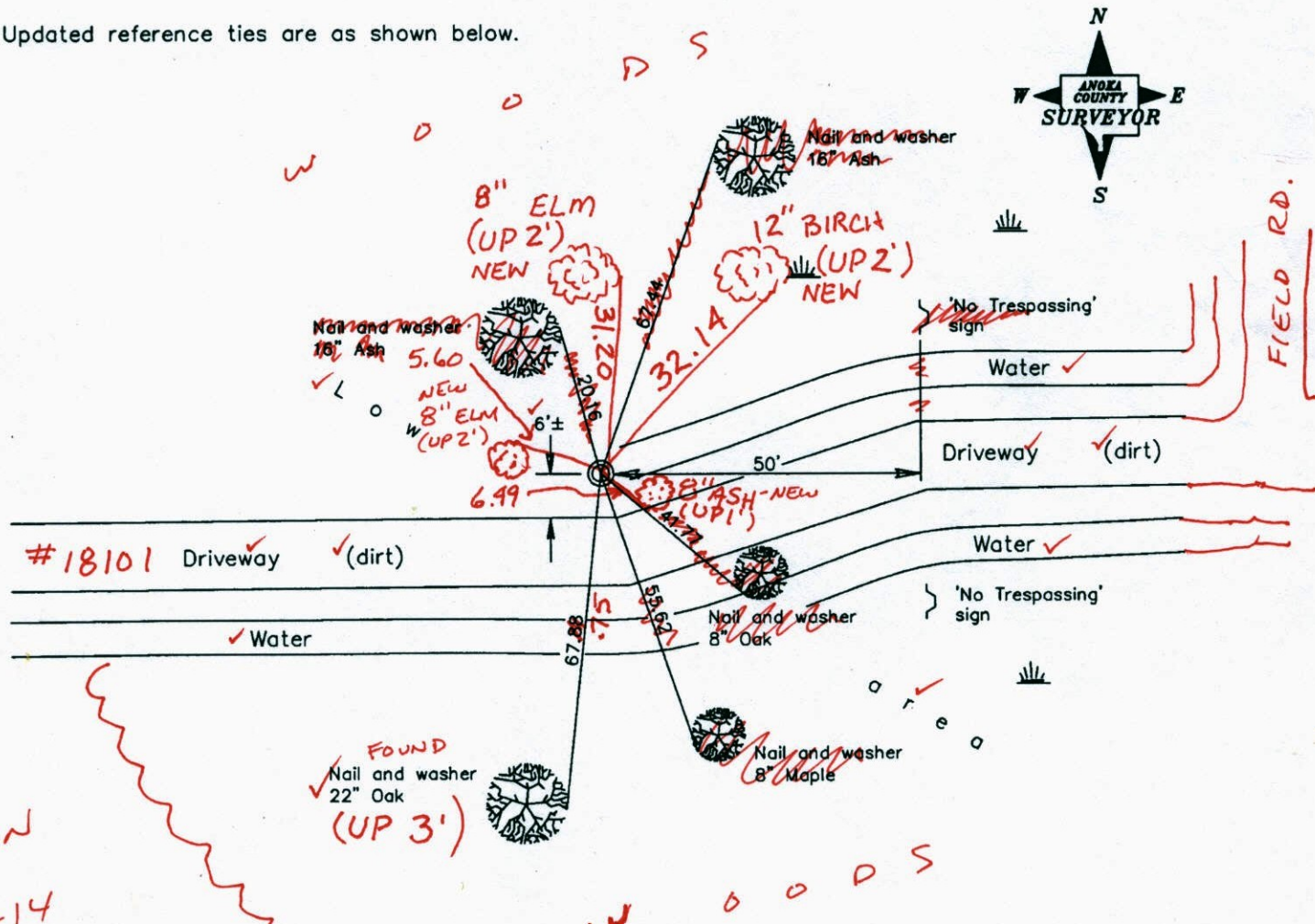
North 1/4 Corner of Sec. 6 Township 32 Range 22

On the 3rd day of September, 1964, the described corner was evidenced by a concrete monument

and to perpetuate the location of said corner, at the exact location thereof, a permanent marker was placed consisting of a red and white iron pipe *(LEANING WEST SLIGHTLY)*
(UP 5'±)

AND on the 13th day of December, 2007, said permanent marker was found and the ties were updated

Updated reference ties are as shown below.



OPEN
9-30-14
BK-SS
TAPED
JRS

Revised date	8/17/95
	7/01/03
	12/13/07

N.A.D. 1983 Coordinates (1996 Adjustment)	
County Project Coordinates	
Northing	195563.5940
Easting	534696.3937
Date	7/01/03

I hereby certify that this United States public land survey monument record is correct and complete to the best of my knowledge and belief.

Larry D. Hoium Date 12/13/07

Larry D. Hoium, Anoka County Surveyor
Minnesota License Number 18165

3DQ = 0.06 N = 195563.4948 E = 534696.0258

CERTIFICATE OF LOCATION OF GOVERNMENT CORNER

County of Anoka

State of Minnesota

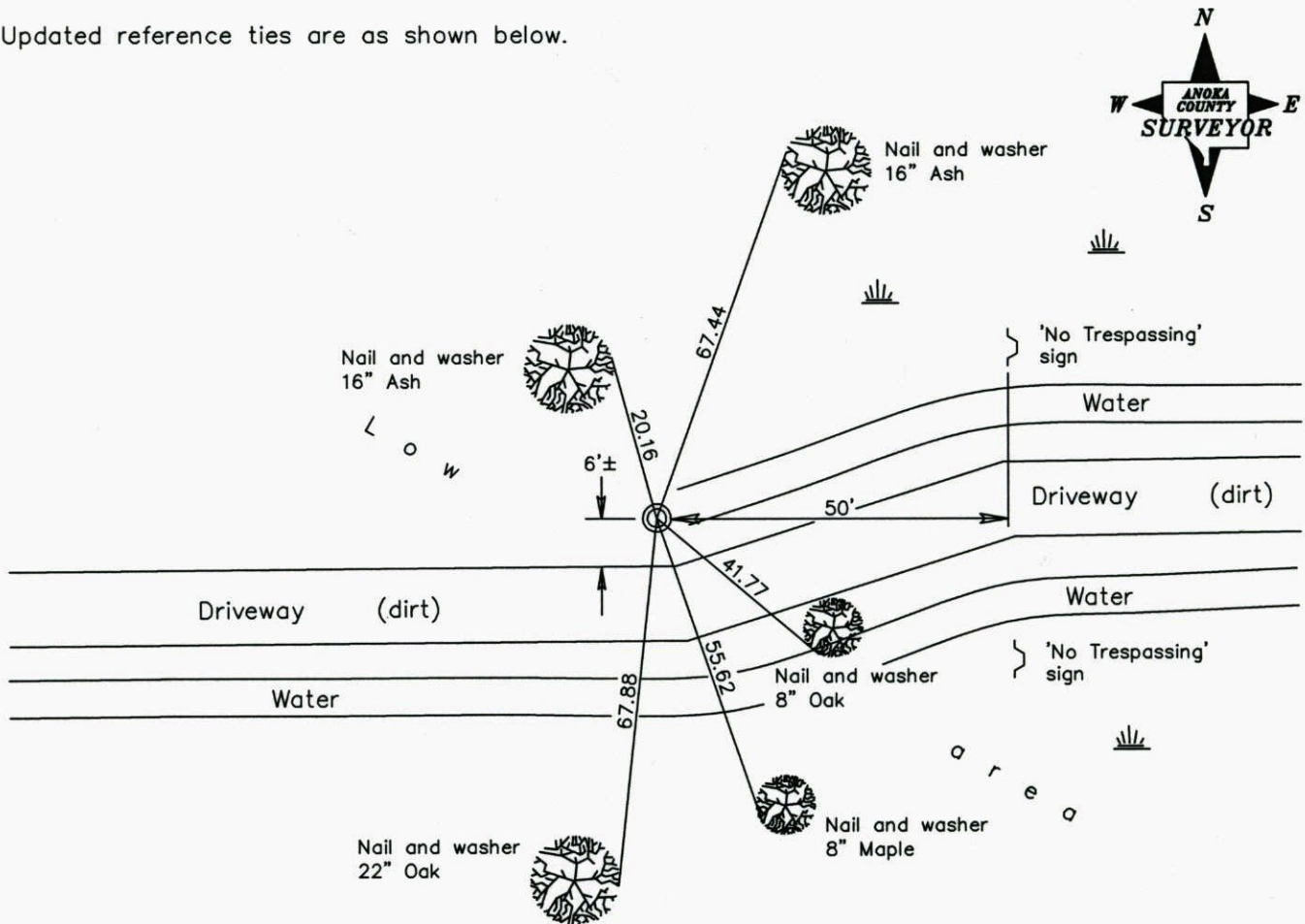
North 1/4 Corner of Sec. 6 Township 32 Range 22

On the 3rd day of September, 1964, the described corner was evidenced by a concrete monument

and to perpetuate the location of said corner, at the exact location thereof, a permanent marker was placed consisting of a red and white iron pipe

AND on the 13th day of December, 2007, said permanent marker was found and the ties were updated

Updated reference ties are as shown below.



Revised date
8/17/95
7/01/03
12/13/07

N.A.D. 1983 Coordinates (1996 Adjustment)	
County Project Coordinates	
Northing	<u>195563.5940</u>
Easting	<u>534696.3937</u>
Date	<u>7/01/03</u>

I hereby certify that this United States public land survey monument record is correct and complete to the best of my knowledge and belief.

Larry D. Hoium Date 12/13/07

Larry D. Hoium, Anoka County Surveyor

Minnesota License Number 18165

CERTIFICATE OF LOCATION OF GOVERNMENT CORNER

County of Anoka

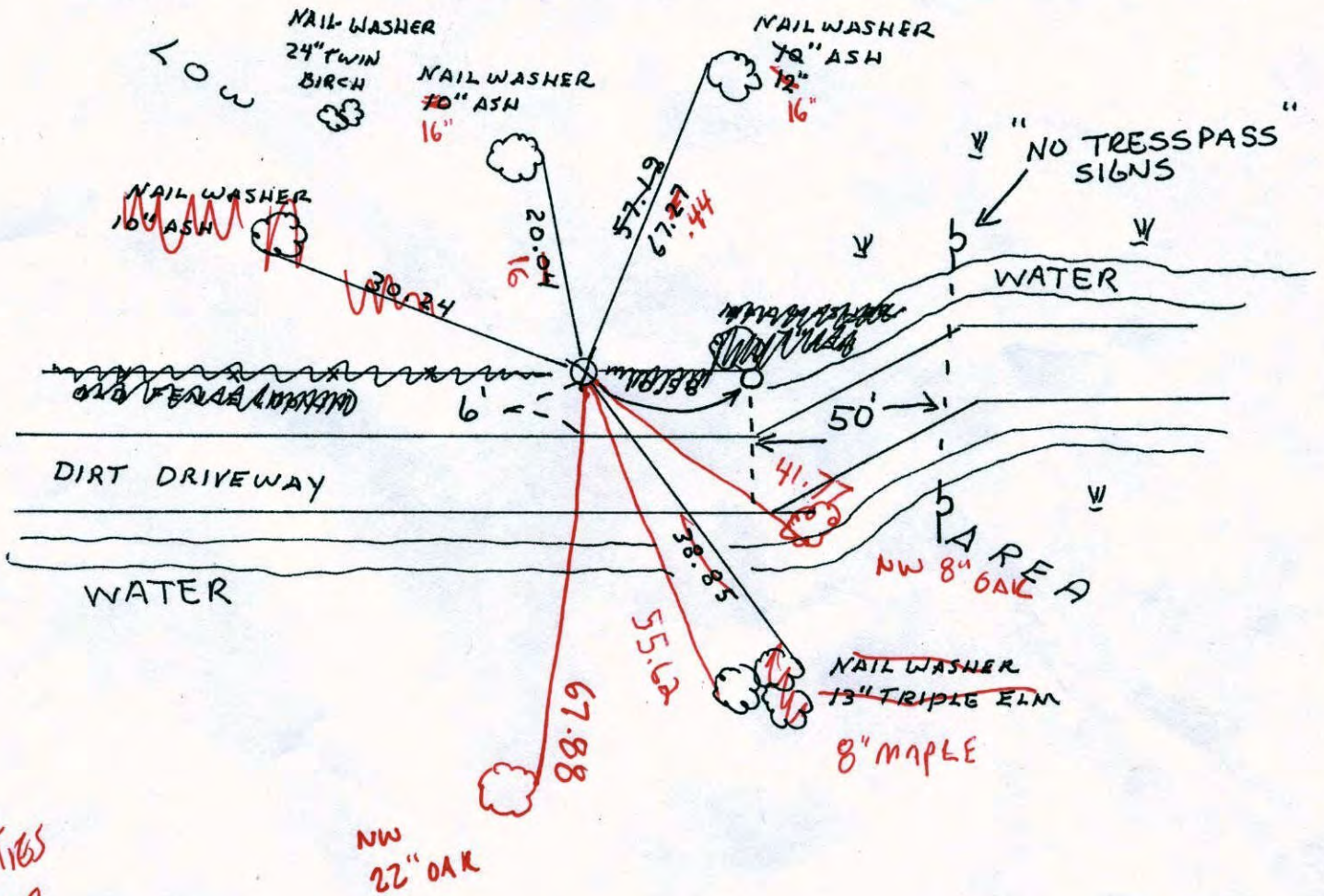
State of Minnesota

NORTH 1/4 Corner of Sec. 6 Township 32 Range 22

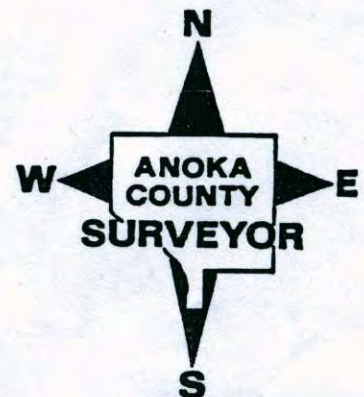
I hereby certify that on the 3 day of SEPT., 1964, I found the described corner which was evidenced by CONCRETE MONUMENT

and I further certify that to perpetuate the location of said corner, I did, at the exact location thereof, place a permanent marker consisting of RED AND WHITE IRON PIPE

which reference or witness monuments are located in the manner following:



Revised date	Revised date	Revised date
9-3-64		
8-14-85		
REDRAWN 4-28-89 HL		
8-30-89		
8-17-95		
7-1-03		



CERTIFICATE OF LOCATION OF GOVERNMENT CORNER

County of Anoka

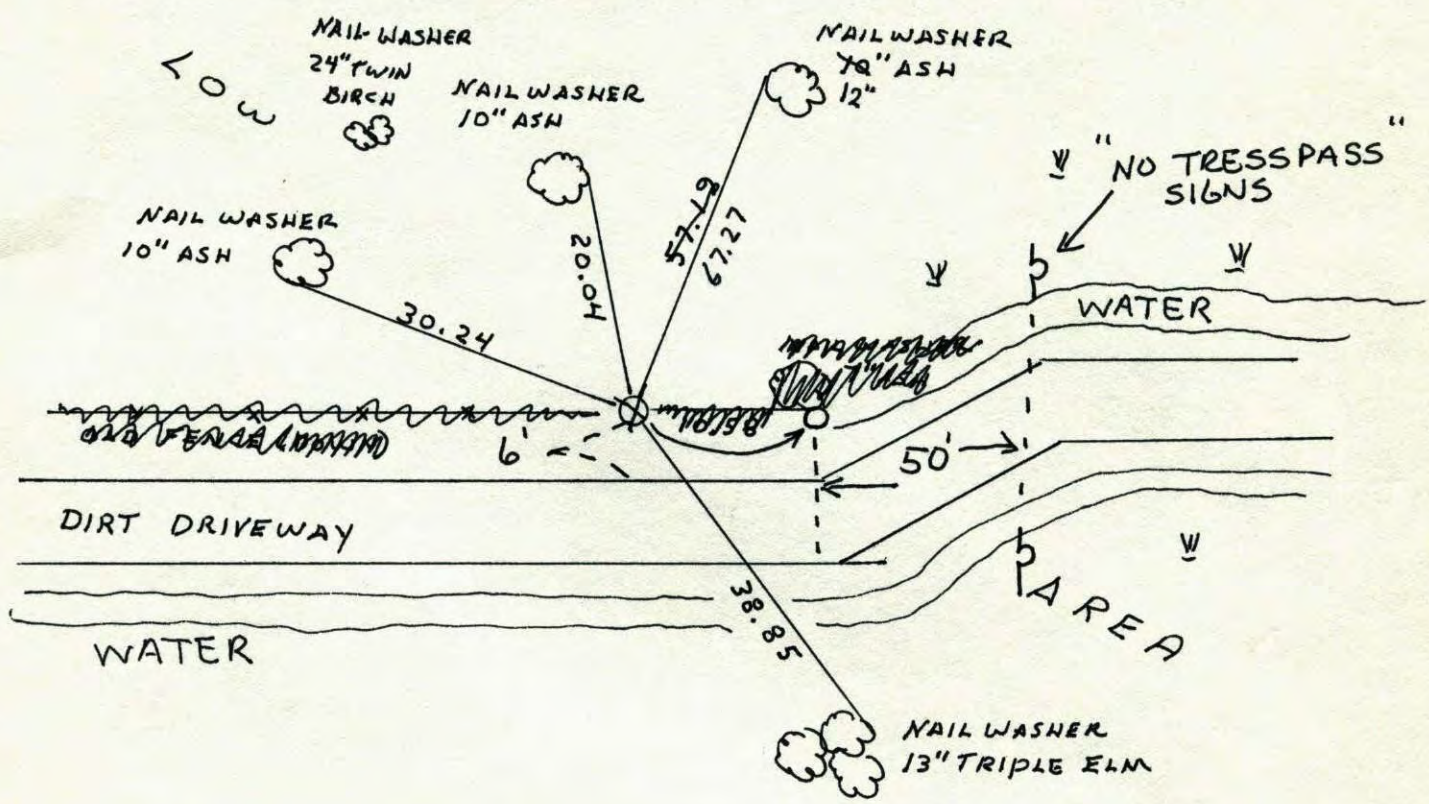
State of Minnesota

NORTH 1/4 Corner of Sec. 6 Township 32 Range 22

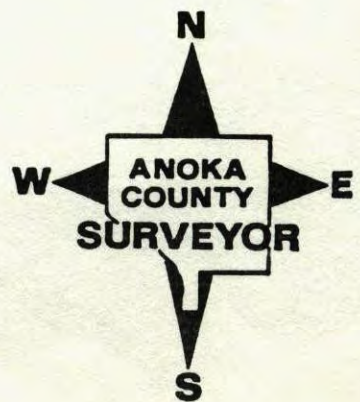
I hereby certify that on the 3 day of SEPT., 1964, I found the described corner which was evidenced by CONCRETE MONUMENT

and I further certify that to perpetuate the location of said corner, I did, at the exact location thereof, place a permanent marker consisting of RED AND WHITE IRON PIPE

which reference or witness monuments are located in the manner following:

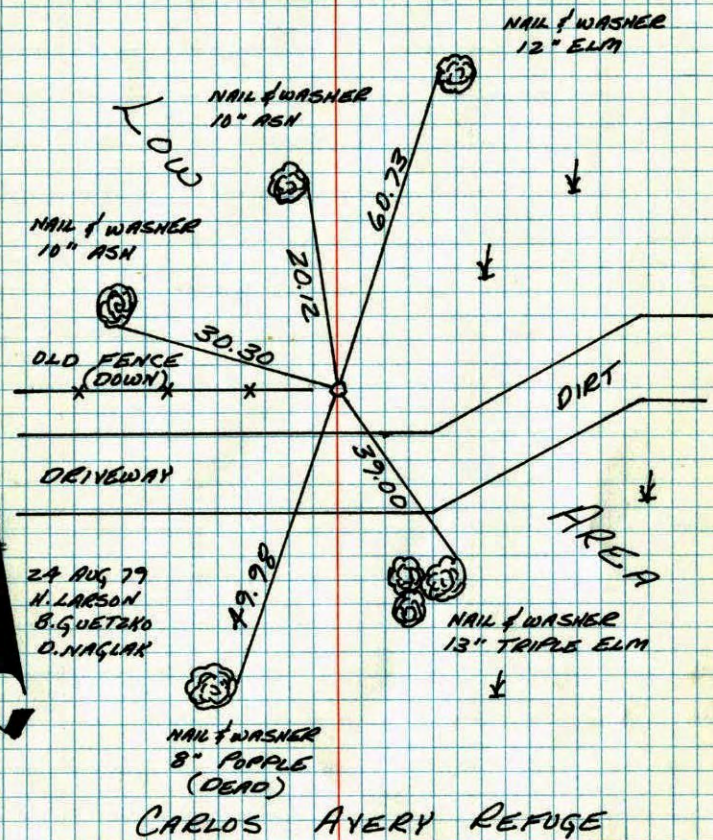


Revised date	Revised date	Revised date
9-3-64		
8-14-85		
REDRAWN 4-28-89 HL		
8-30-89		
8-17-95		
7-1-03		



N 1/4 CORNER SECTION 6 - T32 - R22

RESET RED AND WHITE IRON PIPE, IRON PIPE UP 2.5'

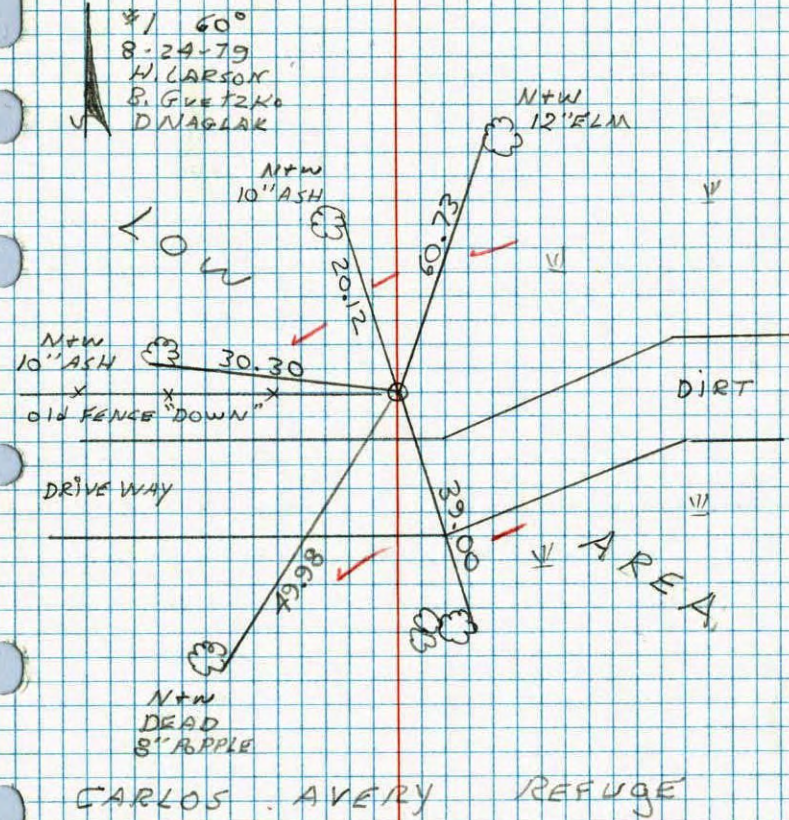


TEMPERATURE CORRECTED AND HORIZONTALLY TAPED MEASUREMENTS

ROLAND W. ANDERSON COUNTY SURVEYOR ANOKA COUNTY, MINNESOTA

N 1/4 COR. SECTION 6 T32 R22

RESET RED AND WHITE IRON PIPE UP UP. 2.5'±



CARLOS AVERY REFUGE

N 1/4 Cor. Sec. 6, T32, R22

Found Concrete Monument up 8"
Replaced Conc. Mon. with Red & white 1/2" Ran pipe up 3'
Concrete very loose.

July 6, 1970

D. Powell

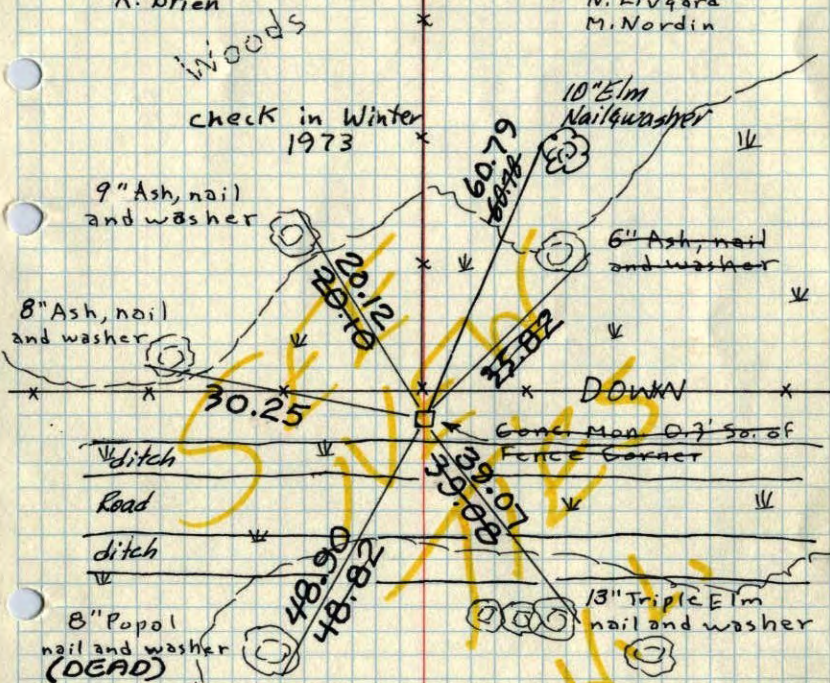
R. Brien

3 Sept. 64

J. Oliver

N. Livgard

M. Nordin



Woods

check in Winter 1973

9" Ash, nail and washer

8" Ash, nail and washer

30.25

ditch

Road

ditch

8" Popol nail and washer (DEAD)

Carlos Avery Game Refuge

tie
Sept. 26, 1974
M.D. Anderson

Woods
TIE CHECK
8-6-76
S. BRIEN
J. STEPHENS

TEMPERATURE CORRECTED
AND HORIZONTALLY
TAPED MEASUREMENTS

ROLAND W. ANDERSON
COUNTY SURVEYOR
ANOKA COUNTY, MINNESOTA

X X

N 1/4 Cor. Sec. 6, T32, R22

Found Concrete Monument up 8".
Concrete loose.

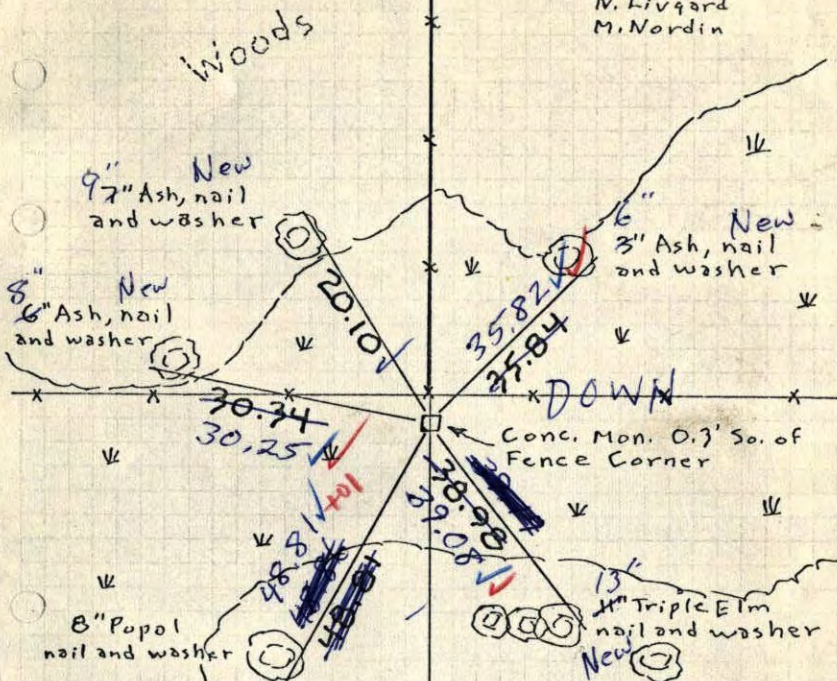
Old New check okay.

3 Sept. 64

J. Oliver

N. Livgard

M. Nordin



Woods

9" New Ash, nail and washer

8" New Ash, nail and washer

30.34

30.25

8" Popol nail and washer

13" Triple Elm nail and washer New

Carlos Avery Game Refuge

Woods
7/6/70
#10-80
D. Powell
R. Brien

TEMPERATURE CORRECTED
AND HORIZONTALLY
TAPED MEASUREMENTS

ROLAND W. ANDERSON
COUNTY SURVEYOR
ANOKA COUNTY, MINNESOTA

N 1/4 Cor. Sec. 6, T 32, R 22

Found Concrete Monument up 8".

N 3 Sept 64
82° #5

J. Oliver
N. Hivgard
M. Nardin

