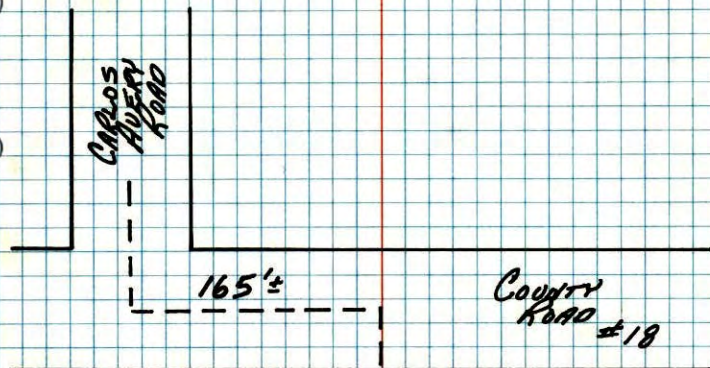


E  $\frac{1}{16}$ <sup>TH</sup> COR. S.E.  $\frac{1}{4}$  SEC. 6, T32, R22

FOUND CONCRETE MONUMENT (FLUSH IN SWAMP). PLACED STEEL SIGN POST AND WARNING SIGN



17 MAR 77  
M.D. ANDERSON  
R.W. BERTLESON  
M.J. HUNE

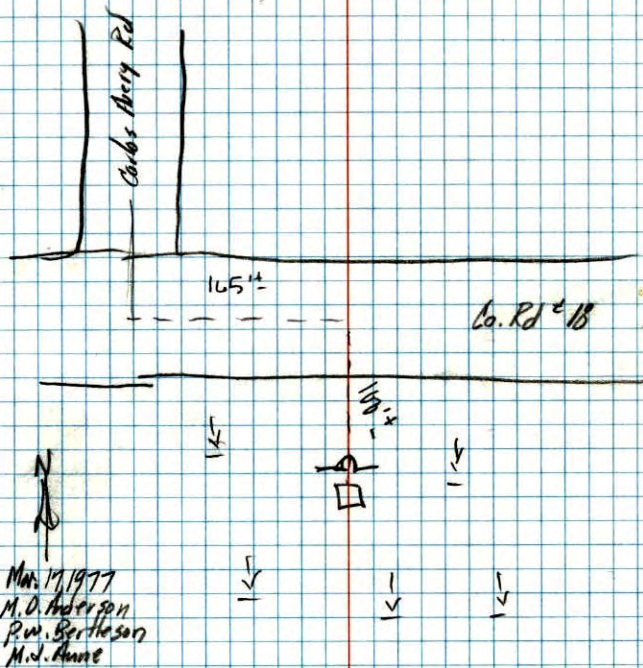
CHECKED  
7-31-79  
B. STEPHENS  
D. STEPHENS  
P. ROSS

TEMPERATURE CORRECTED  
AND HORIZONTALLY  
TAPED MEASUREMENTS

ROLAND W. ANDERSON  
COUNTY SURVEYOR  
ANOKA COUNTY, MINNESOTA

E  $\frac{1}{16}$ <sup>TH</sup> COR. S.E.  $\frac{1}{4}$  SEC. 6-T32-R22

Found long. Mon. (flush in swamp)  
Placed steel sign post & warning sign (1'± Not Mon)



Mar. 17 1977  
M.D. Anderson  
R.W. Bertleson  
M.J. Hune