

CERTIFICATE OF LOCATION OF GOVERNMENT CORNER
County of Anoka State of Minnesota

East 1/4 Corner of Sec. 6 Township 32 Range 22

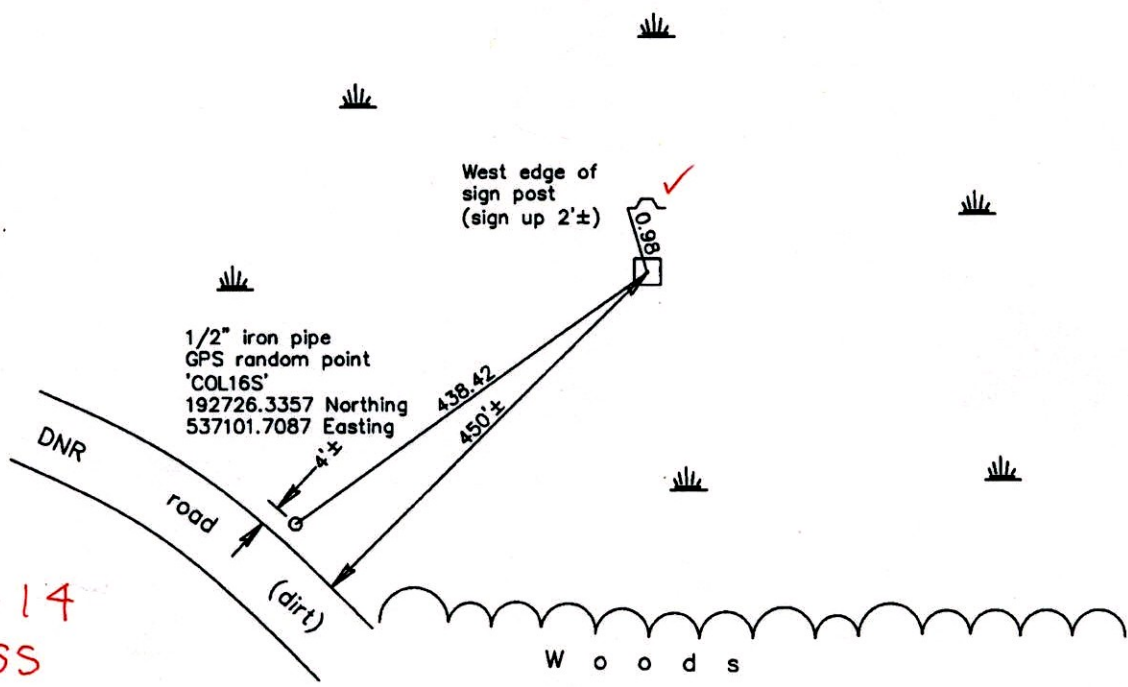
On the 17th day of March, 1977, the described corner was evidenced by a concrete monument

and to perpetuate the location of said corner, at the exact location thereof, a permanent marker was placed consisting of the concrete monument with a sign and post on the north side

AND on the 30th day of January, 2006, said permanent marker was found and the ties were updated

Updated reference ties are as shown below.

NEWSHOES



*12-8-14
BK-SS*

Revised date
1985
1995
1/30/06

N.A.D. 1983 Coordinates (1996 Adjustment)	
County Project Coordinates	
Northing	193092.6863
Easting	537342.5330
Date	2/01/06

I hereby certify that this United States public land survey monument record is correct and complete to the best of my knowledge and belief.

Larry D. Hoium Date 1/30/06

Larry D. Hoium, Anoka County Surveyor

Minnesota License Number 18165

30 = .07

N = 193092.6520 E = 537342.3411

CERTIFICATE OF LOCATION OF GOVERNMENT CORNER

County of Anoka

State of Minnesota

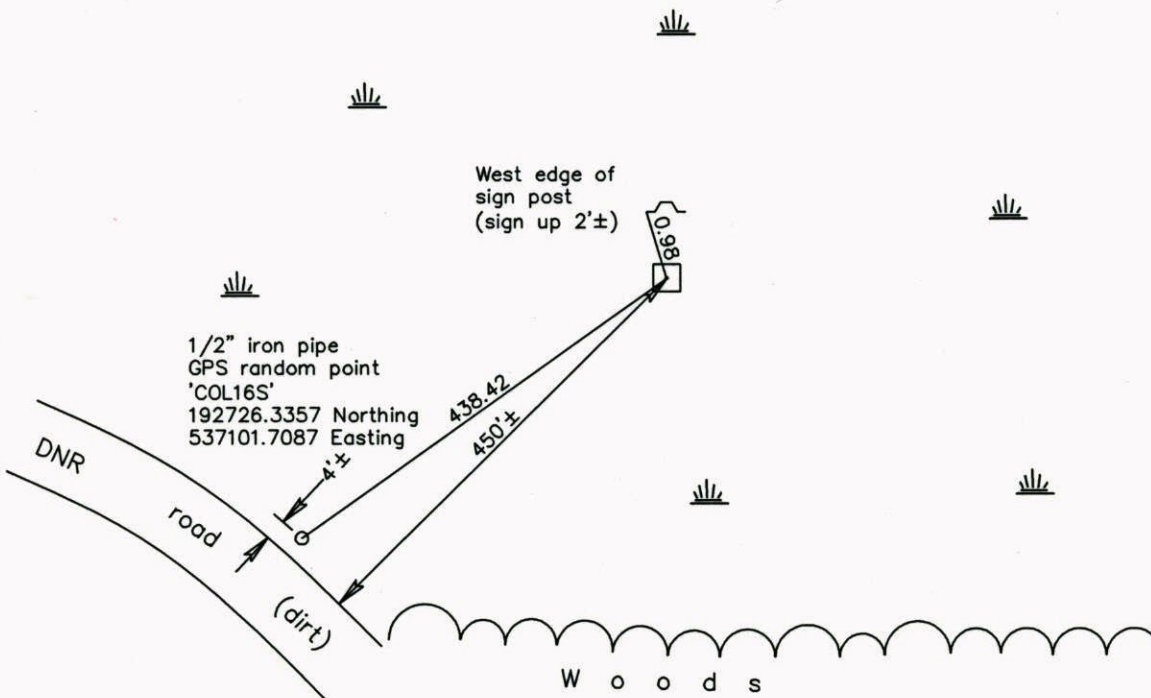
East 1/4 Corner of Sec. 6 Township 32 Range 22

On the 17th day of March, 1977, the described corner was evidenced by a concrete monument

and to perpetuate the location of said corner, at the exact location thereof, a permanent marker was placed consisting of the concrete monument with a sign and post on the north side

AND on the 30th day of January, 2006, said permanent marker was found and the ties were updated

Updated reference ties are as shown below.



Revised date
1985
1995
1/30/06

N.A.D. 1983 Coordinates (1996 Adjustment)	
County Project Coordinates	
Northing	<u>193092.6863</u>
Easting	<u>537342.5330</u>
Date	<u>2/01/06</u>

I hereby certify that this United States public land survey monument record is correct and complete to the best of my knowledge and belief.

Larry D. Hoium Date 1/30/06

Larry D. Hoium, Anoka County Surveyor

Minnesota License Number 18165

CERTIFICATE OF LOCATION OF GOVERNMENT CORNER

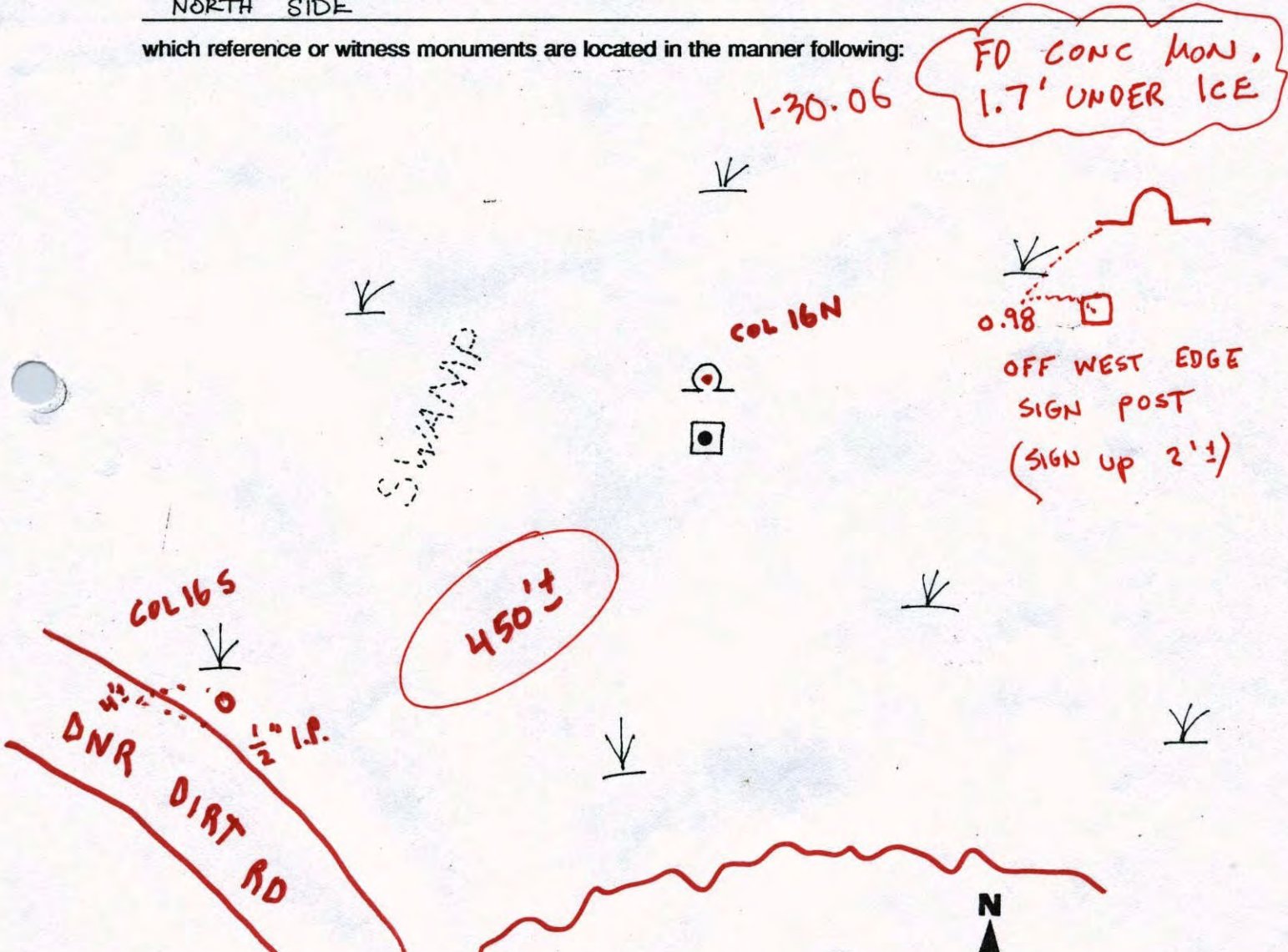
County of Anoka State of Minnesota

EAST QUARTER Corner of Sec. 6 Township 32 Range 22

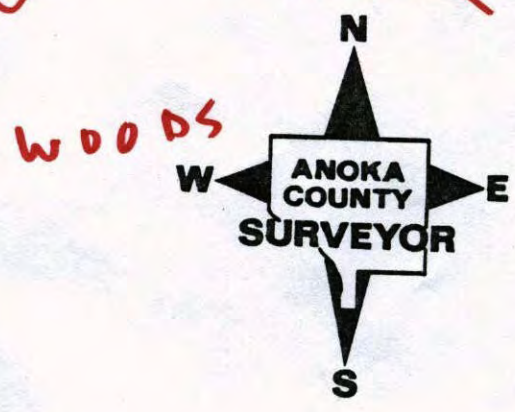
I hereby certify that on the 17th day of MARCH, 1977, I found the described corner which was evidenced by CONCRETE MONUMENT

and I further certify that to perpetuate the location of said corner, I did, at the exact location thereof, place a permanent marker consisting of CONCRETE MONUMENT SIGN & POST ON NORTH SIDE

which reference or witness monuments are located in the manner following:



Revised date	Revised date	Revised date
7-31-79		
WET 85		
" 95		



CERTIFICATE OF LOCATION OF GOVERNMENT CORNER

County of Anoka

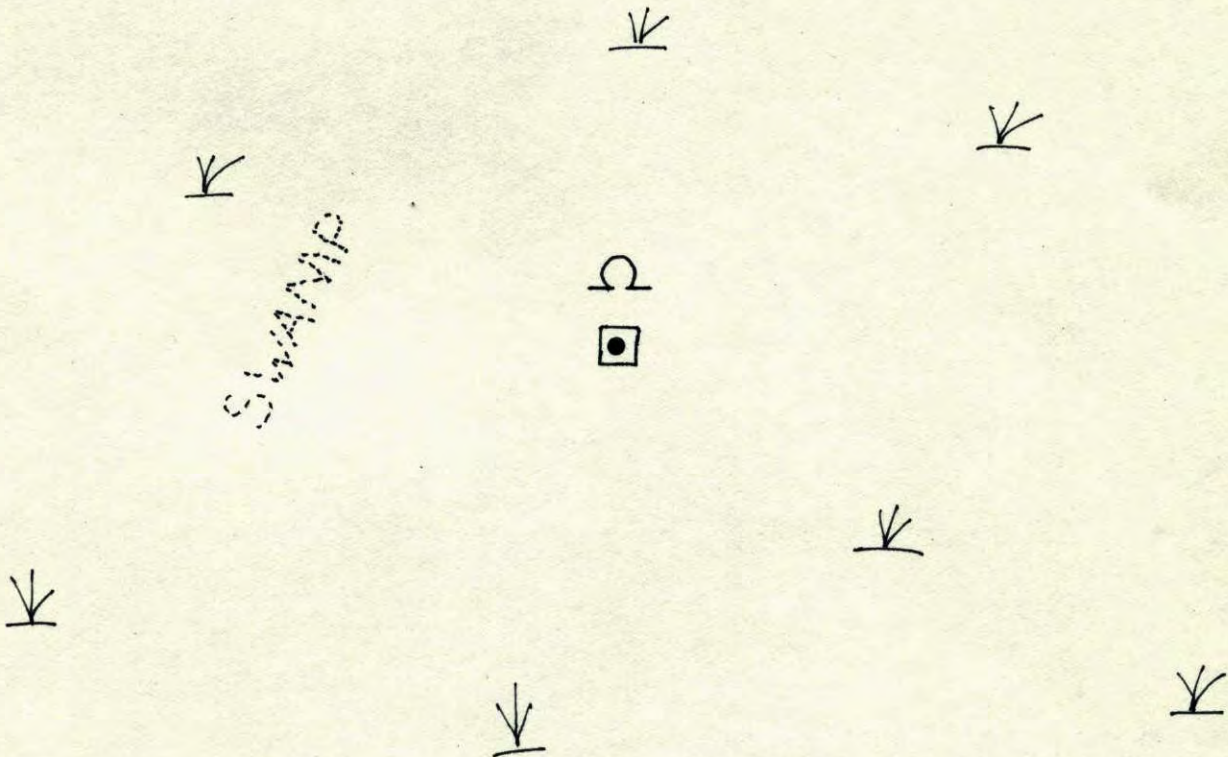
State of Minnesota

EAST QUARTER Corner of Sec. 6 Township 32 Range 22

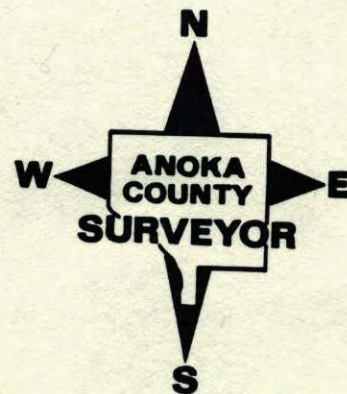
I hereby certify that on the 17th day of MARCH, 1977, I found the described corner which was evidenced by CONCRETE MONUMENT

and I further certify that to perpetuate the location of said corner, I did, at the exact location thereof, place a permanent marker consisting of CONCRETE MONUMENT SIGN & POST ON NORTH SIDE

which reference or witness monuments are located in the manner following:

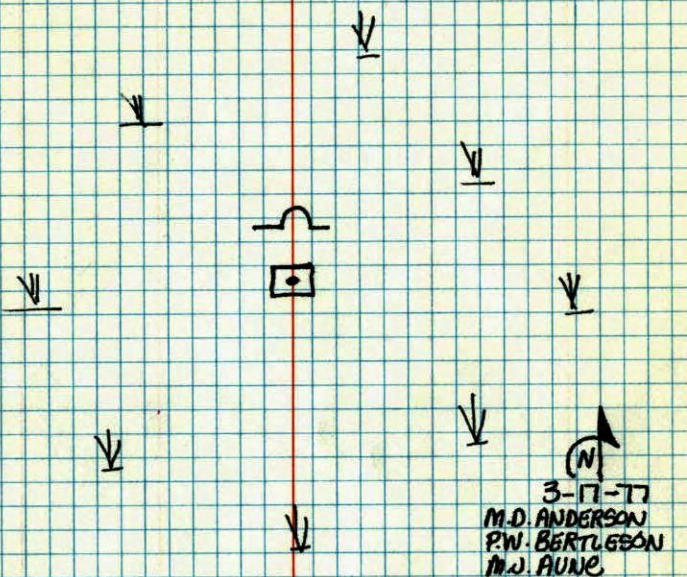


Revised date	Revised date	Revised date
7-31-79		
WET 85		
" 95		



E. 1/4 COR. SEC. 6 T. 32 R. 22

FOUND CONCRETE MONUMENT FLUSH IN SWAMP. PLACED STEEL SIGN POST AND WARNING SIGN 1'± NORTH OF MONUMENT



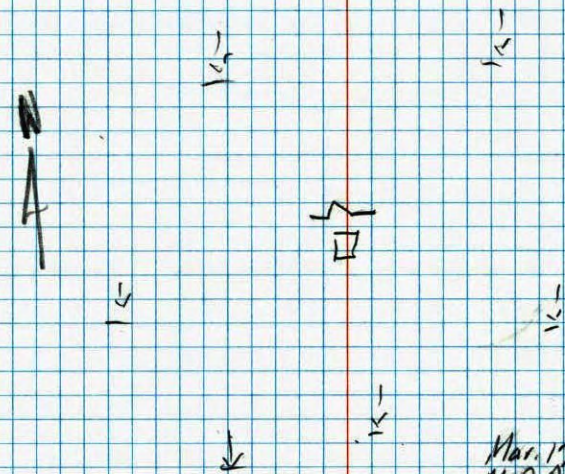
CHECKED
7-31-79
B. STEPHENS

TEMPERATURE CORRECTED
AND HORIZONTALLY
TAPED MEASUREMENTS

ROLAND W. ANDERSON
COUNTY SURVEYOR
ANOKA COUNTY, MINNESOTA

E 1/4 Cor. Sec. 6 - T 32 - R 22

Found Conc. Mon (Flush in swamp)
Placed steel sign post & warning sign (1'± N of Mon.)



Mar. 17, 1977
M.D. Anderson
P.W. Bertlison
M.J. Aune