

CERTIFICATE OF LOCATION OF GOVERNMENT CORNER

County of Anoka State of Minnesota

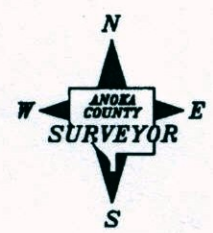
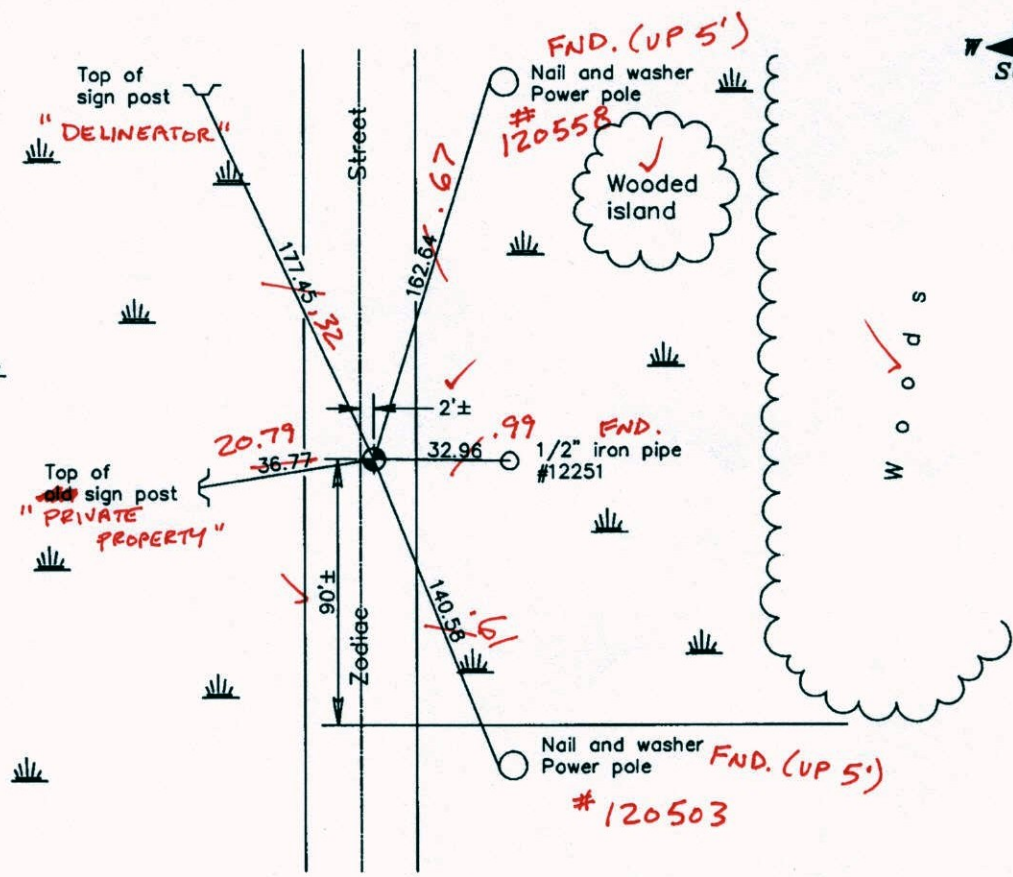
West 1/4 Corner of Sec. 4 Township 32 Range 22

On the 6th day of March, 1974, the described corner was evidenced by an iron pipe set
using Carlos Avery information

and to perpetuate the location of said corner, at the exact location thereof, a permanent marker
 was placed consisting of a cast iron monument

AND on the 27th day of February, 2008, said permanent marker was found down 2'± and the
ties were updated

Updated reference ties are as shown below.



*9-9-14
 BK-55
 TOTAL STATION*

Revised date
8/21/89
8/09/95
2/27/08

N.A.D. 1983 Coordinates (1996 Adjustment)	
County Project Coordinates	
Northing	193102.5610
Easting	542630.4687
Date	6/05/03

I hereby certify that this United States public land survey monument record is correct and complete to the best of my knowledge and belief.

Larry D. Hoium Date 2/27/08
 Larry D. Hoium, Anoka County Surveyor
 Minnesota License Number 18165

CERTIFICATE OF LOCATION OF GOVERNMENT CORNER

County of Anoka

State of Minnesota

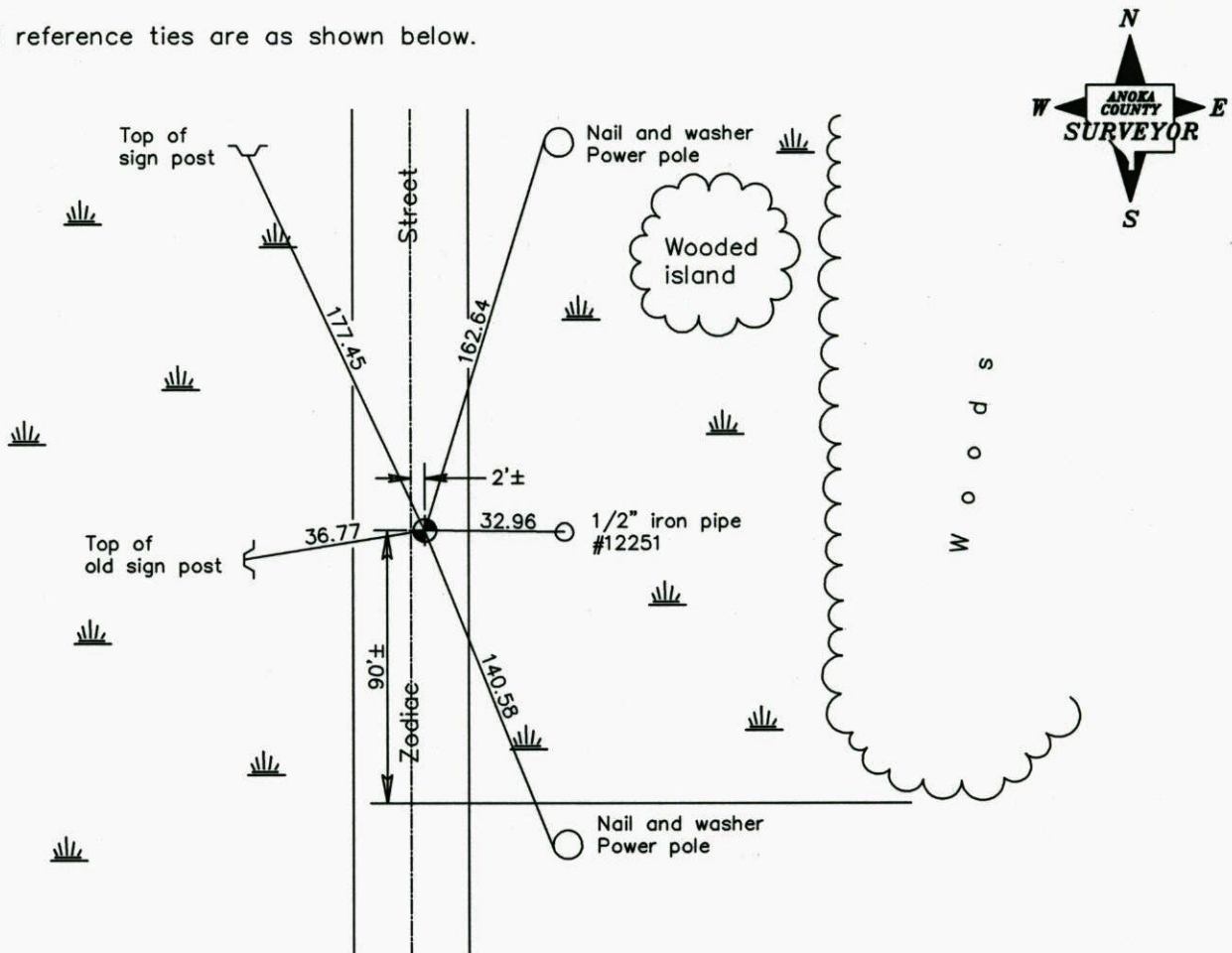
West 1/4 Corner of Sec. 4 Township 32 Range 22

On the 6th day of March, 1974, the described corner was evidenced by an iron pipe set using Carlos Avery information

and to perpetuate the location of said corner, at the exact location thereof, a permanent marker was placed consisting of a cast iron monument

AND on the 27th day of February, 2008, said permanent marker was found down 2'± and the ties were updated

Updated reference ties are as shown below.



Revised date

8/21/89
8/09/95
2/27/08

**N.A.D. 1983 Coordinates
(1996 Adjustment)**

County Project Coordinates	
Northing	193102.5610
Easting	542630.4687
Date	6/05/03

I hereby certify that this United States public land survey monument record is correct and complete to the best of my knowledge and belief.

Larry D. Hoium Date 2/27/08
 _____, Anoka County Surveyor
 Minnesota License Number 18165

CERTIFICATE OF LOCATION OF GOVERNMENT CORNER

County of Anoka

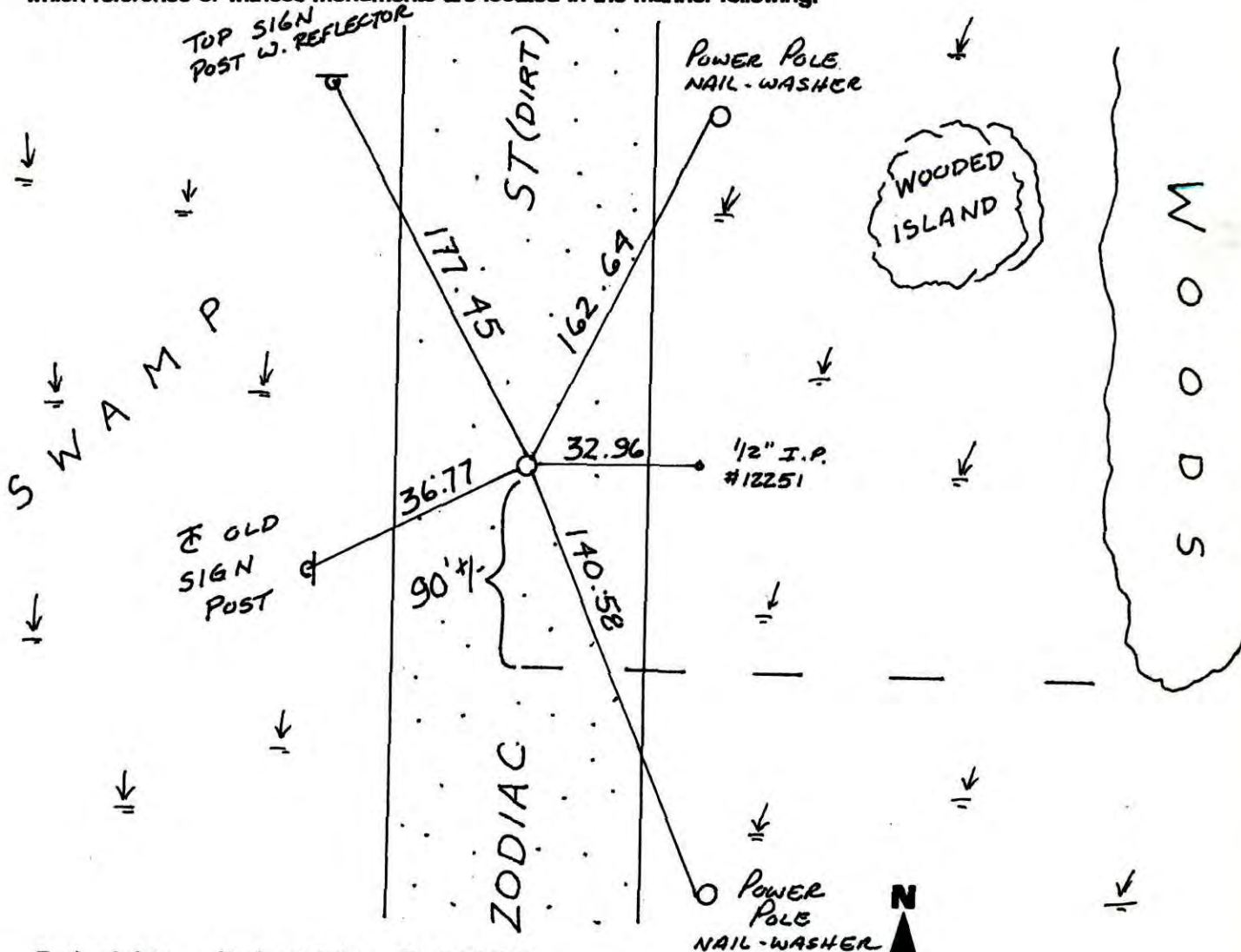
State of Minnesota

WEST 1/4 Corner of Sec. 4 Township 32 Range 22

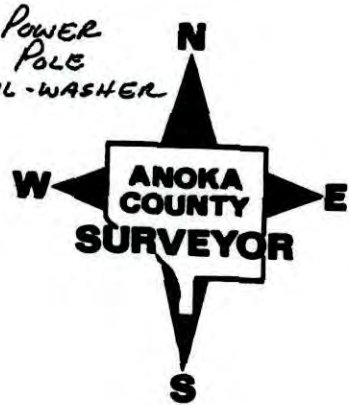
I hereby certify that on the 6 day of MARCH, 1974, I found the described corner which was evidenced by I.P. SET FROM CARLOS AVERY INFO.

and I further certify that to perpetuate the location of said corner, I did, at the exact location thereof, place a permanent marker consisting of CAST IRON MON. (DOWN 2' +/- AND 2' EAST OF Q)

which reference or witness monuments are located in the manner following:



Revised date	Revised date	Revised date
8-21-89		
8-9-95		
2-27-08		



CERTIFICATE OF LOCATION OF GOVERNMENT CORNER

County of Anoka

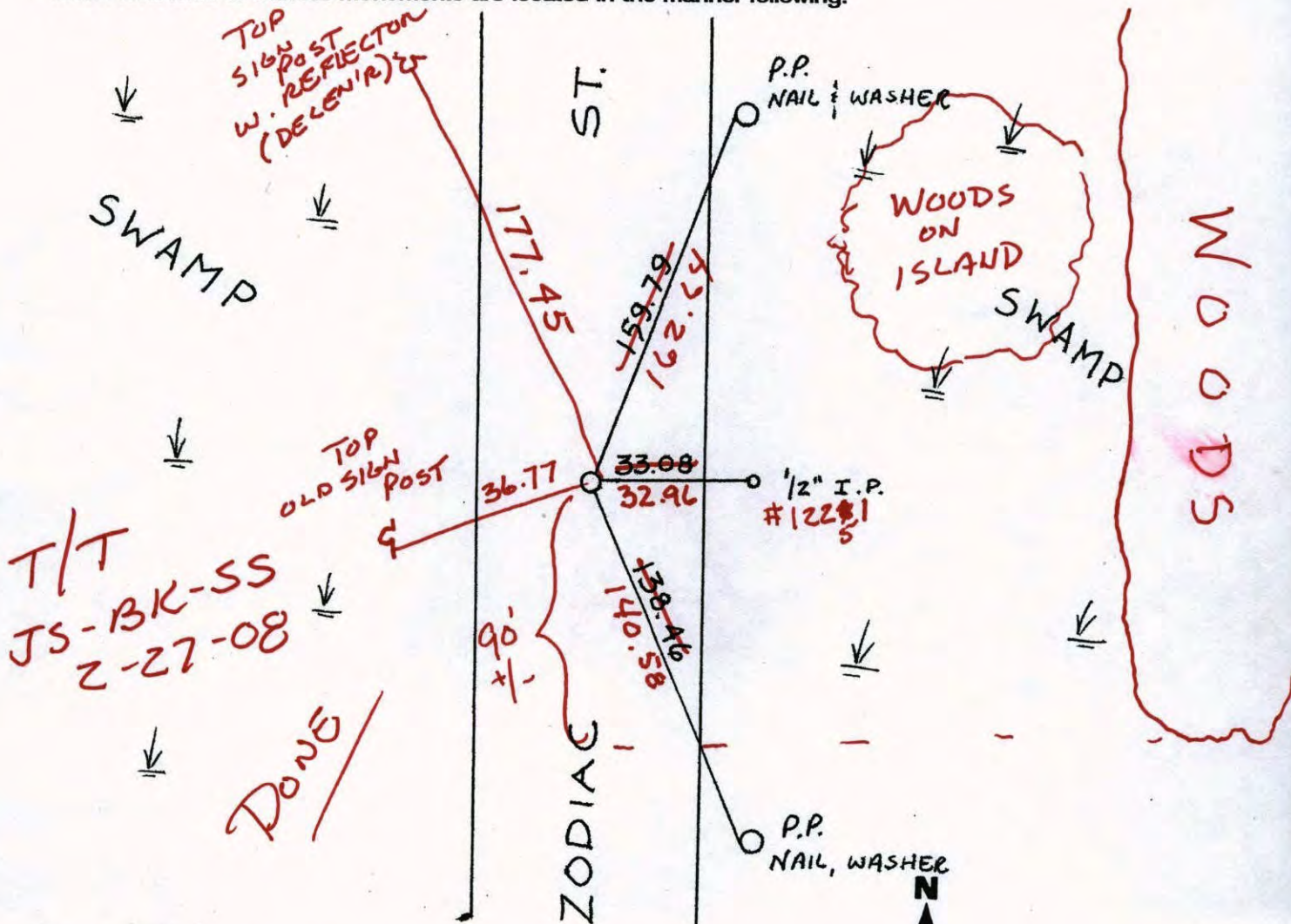
State of Minnesota

WEST QTR. Corner of Sec. 4 Township 32 Range 22

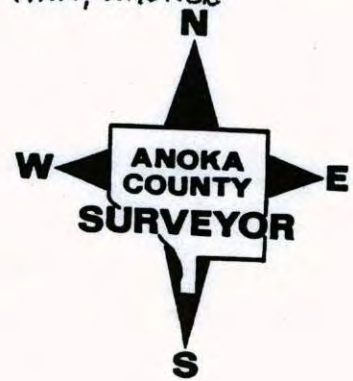
I hereby certify that on the 6 day of MARCH, 1974, I found the described corner which was evidenced by IRON PIPE SET FROM CARLOS AVERY INFO.

and I further certify that to perpetuate the location of said corner, I did, at the exact location thereof, place a permanent marker consisting of CAST IRON MON. (DOWN 2' +/-)
2' EAST OF ♀

which reference or witness monuments are located in the manner following:

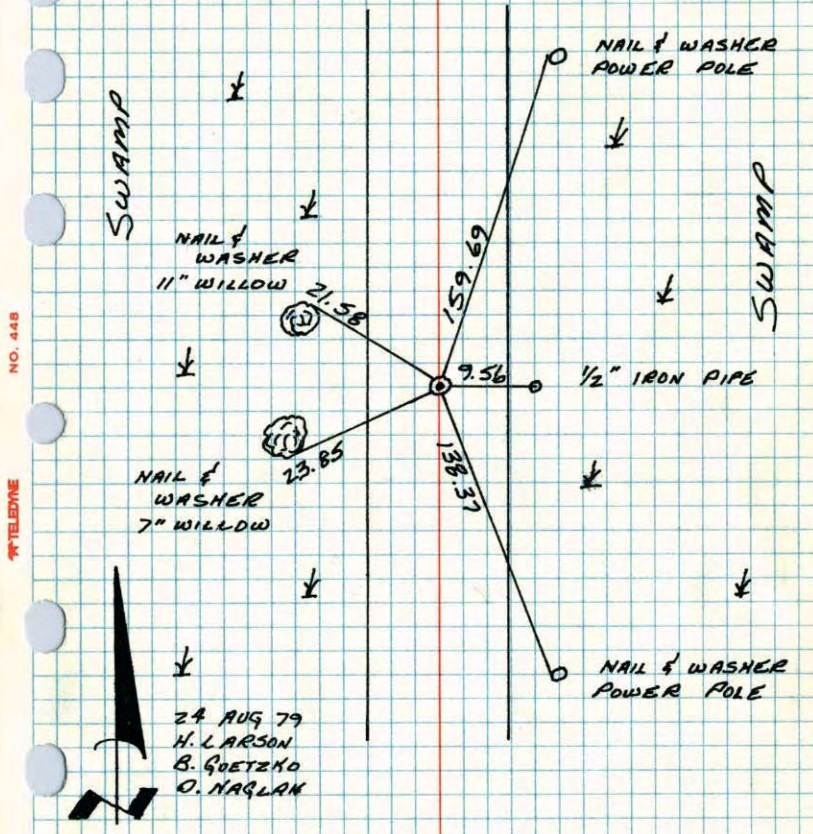


Revised date	Revised date	Revised date
8-21-89		
8-9-95		



W 1/4 CORNER SECTION 4 - T32 - R22

REPLACED 1/2" IRON PIPE WITH CAST IRON MONUMENT IN 1974, CAST IRON DOWN 1'± AND 3'± EAST OF CENTERLINE.



NO. 448 TELEPHONE

24 AUG 79
 H. LARSON
 B. GOETZKO
 O. NAJLAN

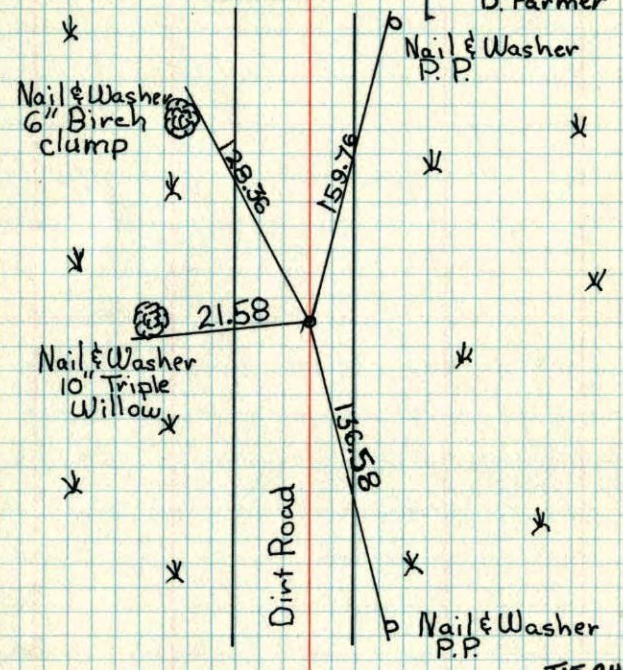
TEMPERATURE CORRECTED AND HORIZONTALLY TAPED MEASUREMENTS

ROLAND W. ANDERSON COUNTY SURVEYOR ANOKA COUNTY, MINNESOTA

W 1/4 Cor. Sec. 4 T32 R22

Set Iron pipe from old Carlos Avery information. (down .5'±).
 Replaced with Cast-iron

March 6, 1974
 H. Larson
 J. Boettcher
 D. Farmer



RETIED
8-29-79
H. Larson

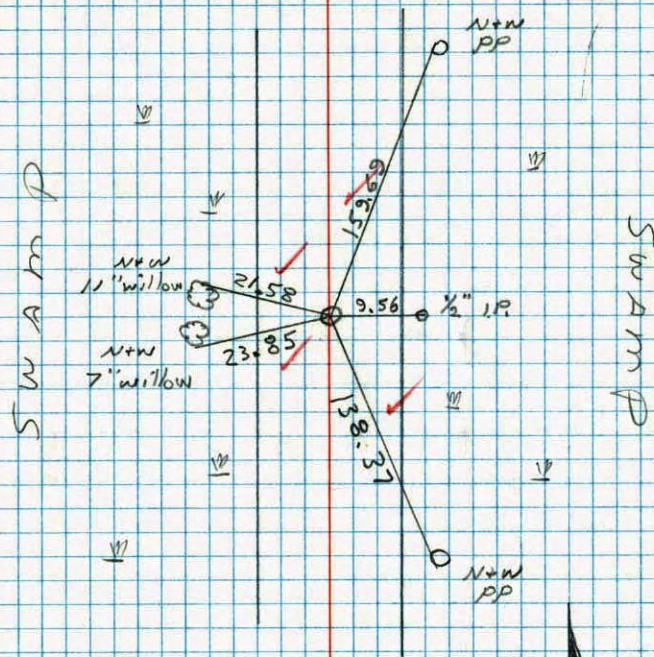
TIE CHECK
 8-3-76
 G. ADAMS
 S. BRIEN
 J. STEPHENS

ROLAND W. ANDERSON COUNTY SURVEYOR ANOKA COUNTY, MINNESOTA

TEMPERATURE CORRECTED AND HORIZONTALLY TAPED MEASUREMENTS

W 1/4 COR. SECTION 4 T32 R22

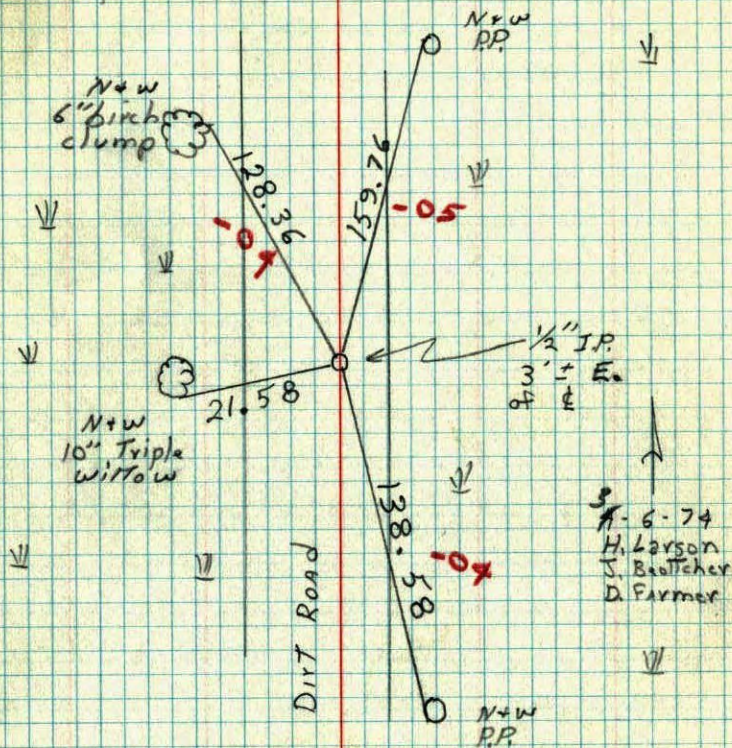
REPLACED 1/2" IRON PIPE WITH
CAST IRON MONUMENT. IN 1974
C.I. DOWN 1'± AND 3'± EAST OF ♀.



* 1 60°
8-24-79
H. Larson
B. Guetako
D. Naglek

W 1/4 Cor. Sec. 4 T32 R22

Set iron pipe from old Carlos
Avery information.



6-74
H. Larson
J. Butcher
D. Farmer