

# CERTIFICATE OF LOCATION OF GOVERNMENT CORNER

County of Anoka

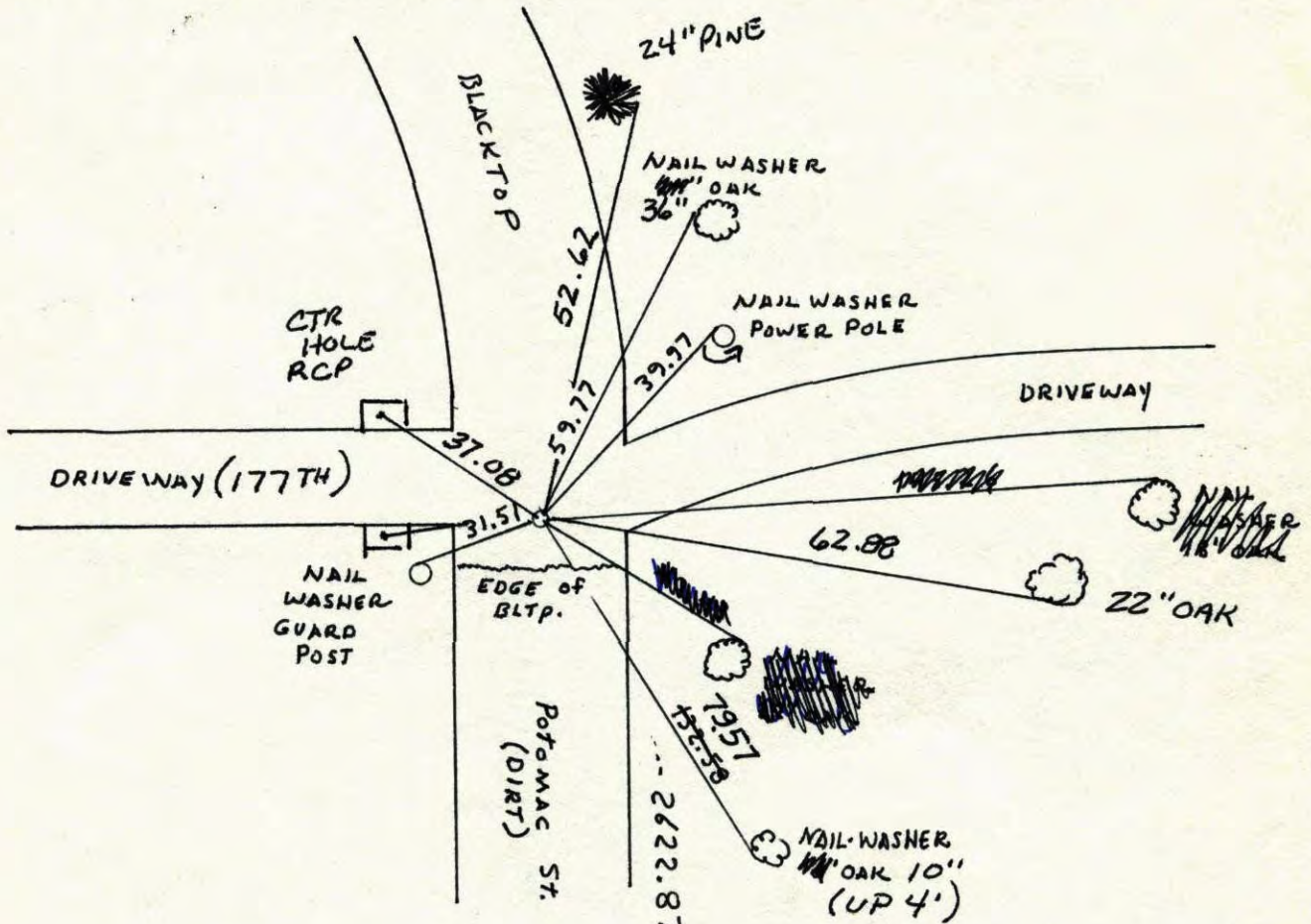
State of Minnesota

E 1/4 Corner of Sec. 4 Township 32 Range 22

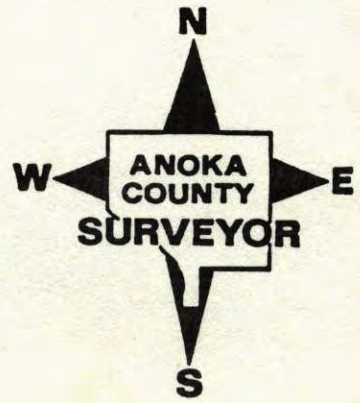
I hereby certify that on the 18 day of SEPT, 1964, I found the described corner which was evidenced by 1 1/2" WELL POINT FROM TIES BY R.M. KNUTSON

and I further certify that to perpetuate the location of said corner, I did, at the exact location thereof, place a permanent marker consisting of EAST IRON MONUMENT  
PLG 2.00' NORTH AND EAST SET 11-SEPT-69

which reference or witness monuments are located in the manner following:



Revised date	Revised date	Revised date
<del>                    </del>	11-7-07	
9-11-69		
6-5-73		
7-13-85		
RESET 5-4-87 HL		
8-9-89		
8-9-95		



2622.87 TO SE. CORNER ...

# CERTIFICATE OF LOCATION OF GOVERNMENT CORNER

County of Anoka

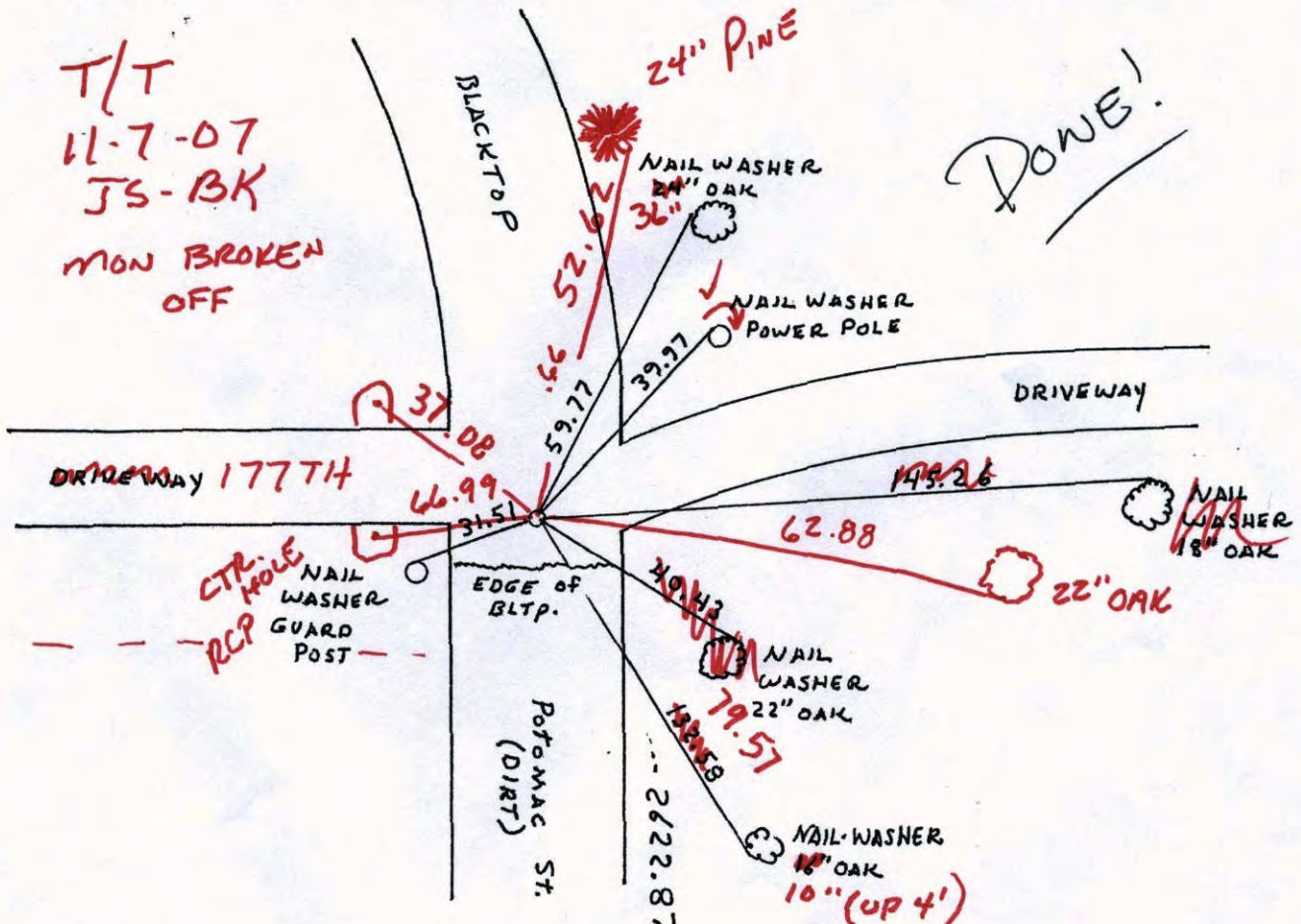
State of Minnesota

E 1/4 Corner of Sec. 4 Township 32 Range 22

I hereby certify that on the 18 day of SEPT, 1964, I found the described corner which was evidenced by 1 1/2" WELL POINT FROM TIES BY R.M. KNUTSON

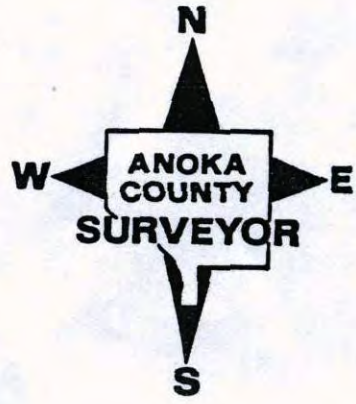
and I further certify that to perpetuate the location of said corner, I did, at the exact location thereof, place a permanent marker consisting of EAST IRON MONUMENT  
PLS 2.00' NORTH AND EAST SET 11-SEPT-69

which reference or witness monuments are located in the manner following:



DONE!

Revised date	Revised date	Revised date
9-11-69		
6-5-73		
7-13-85		
RESET 5-4-89 HL		
8-9-89		
8-9-95		

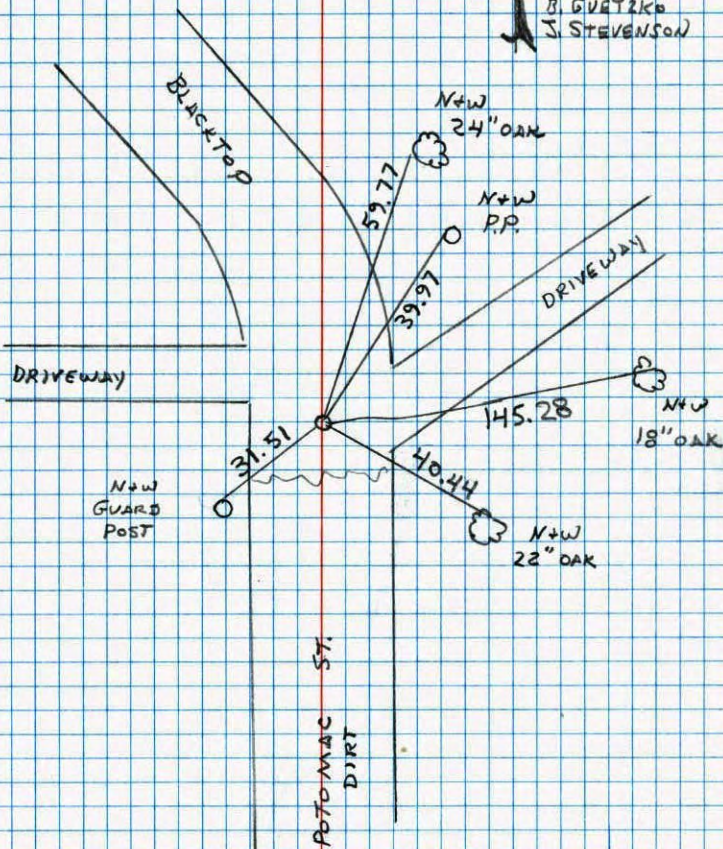


E 1/4 CORNER SECTION 4 T32 R22

RETIED CAST IRON AFTER ROAD

CONSTRUCTION SET REMOVEABLE.

5-4-89  
N. LARSON  
B. GUTZKO  
J. STEVENSON

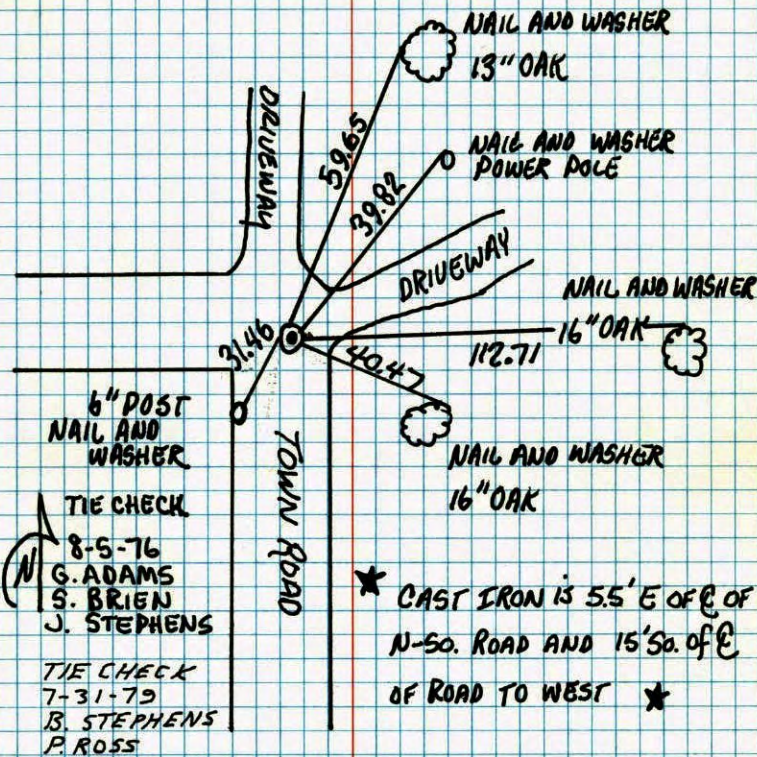


NO. 448

TELEPHONE

E 1/4 CORNER SEC. 4 T.32 R.22

REPLACED 1 1/2" IRON PIPE WITH CAST IRON MONUMENT. C.I. DOWN 0.5'±.



6" POST  
NAIL AND  
WASHER

TIE CHECK

8-5-76  
G. ADAMS  
S. BRIEN  
J. STEPHENS

TIE CHECK  
7-31-79  
B. STEPHENS  
P. ROSS

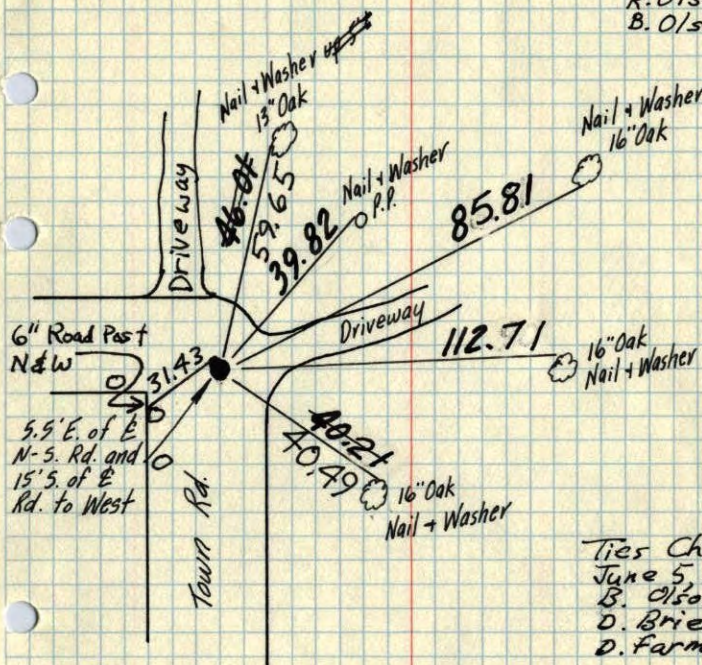
\* CAST IRON IS 5.5' E OF E OF  
N-SO. ROAD AND 15' SO. OF E  
OF ROAD TO WEST \*

TEMPERATURE CORRECTED BOLAND W. ANDERSON  
AND HORIZONTALLY COUNTY SURVEYOR  
TAPED MEASUREMENTS ANOKA COUNTY, MINNESOTA

## E 1/4 Cor. Sec. 4 T. 32, R. 22

Found  $1\frac{1}{2}$ " Well point down 1'± from ties by R.M. Knutson  
 Replaced  $1\frac{1}{2}$ " Iron Pipe with Cast Iron Mon.  
 down 0.5'±.

Sept. 11, 1969  
 D. Powell  
 R. Olson  
 B. Olson



Ties Checked  
 June 5, 1973  
 B. Olson  
 D. Brien  
 D. Farmer

SEE NEW  
 TIES

Sept. 18, 64

M. D. Anderson  
 J. Oliver  
 G. Mills

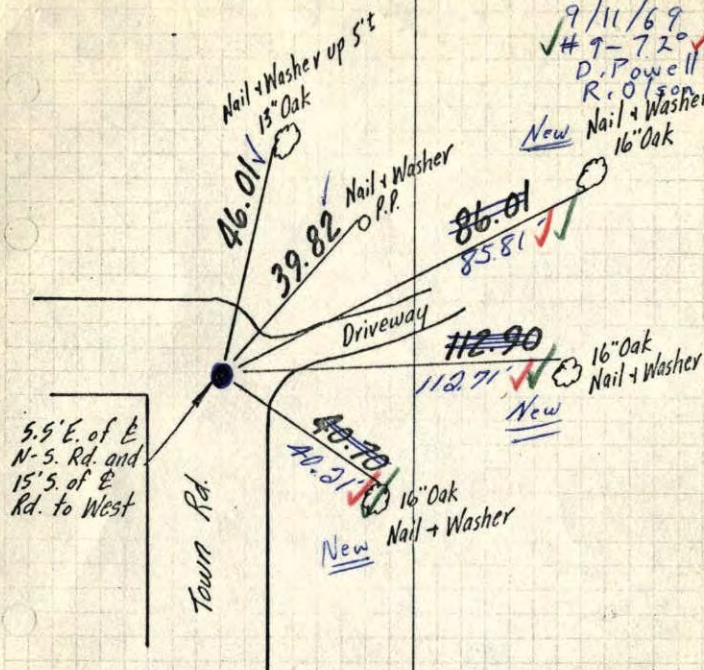
TEMPERATURE CORRECTED  
 AND HORIZONTALLY  
 TAPED MEASUREMENTS

ROLAND W. ANDERSON  
 COUNTY SURVEYOR  
 ANOKA COUNTY, MINNESOTA

S  
X E 1/4 Cor. Sec. 4 T. 32, R. 22

Found  $1\frac{1}{2}$ " Well point down 1'± from ties by R.M. Knutson  
 Replaced Iron with C.I. Mon.  
 down 0.5'±.

9/11/69  
 #9-720  
 D. Powell  
 R. Olson  
 New Nail + Washer B. Olson  
 16" Oak



Sept. 18, 64

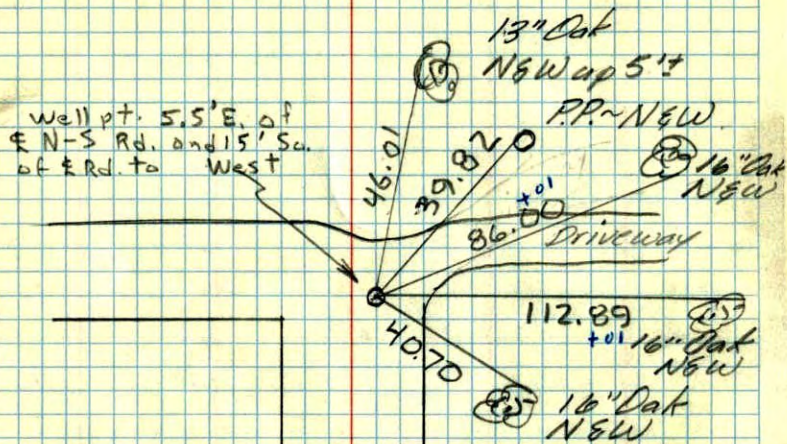
M. D. Anderson  
 J. Oliver  
 G. Mills

TEMPERATURE CORRECTED  
 AND HORIZONTALLY  
 TAPED MEASUREMENTS

ROLAND W. ANDERSON  
 COUNTY SURVEYOR  
 ANOKA COUNTY, MINNESOTA

E 1/4 Cor. Sec. 4-T32-R22

found 1 1/2" well point down  
7 1/2' from ties by R.M. Knudson  
of 1961

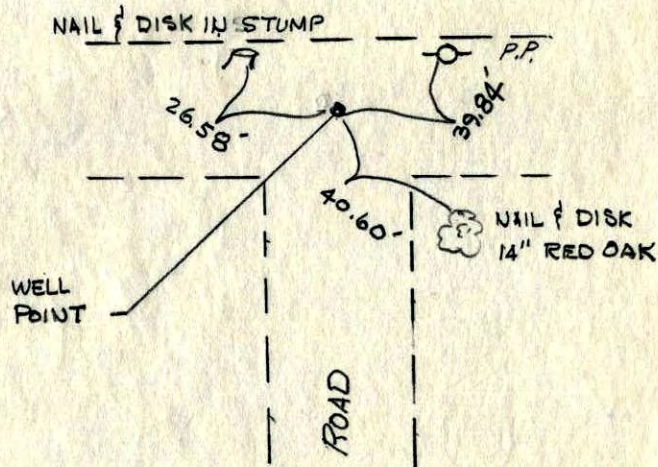


Sept. 18, 1964  
M.D. Anderson  
J. Olyer  
G. Mills.  
Temp 68°  
Tape # 2

TOWN RD.

E 1/4 CORNER TIE  
SECTION 4-32-22

Don't have  
this tie



R.M. Knudson