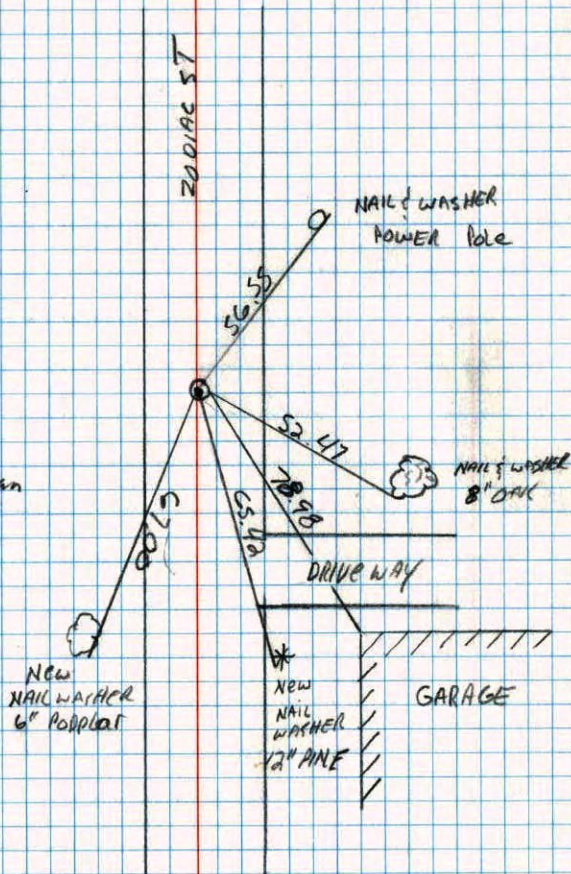


NW 1/4  
West 1/4 of the Corner sec. 4 T 32 R 22

Retied cast iron monument



7-2-50  
D. KLEIN  
M. Zimmerman



NEW  
NAIL WASHER  
6" Poplar

NEW  
NAIL  
WASHER  
1/2" PINE

GARAGE

DRIVEWAY

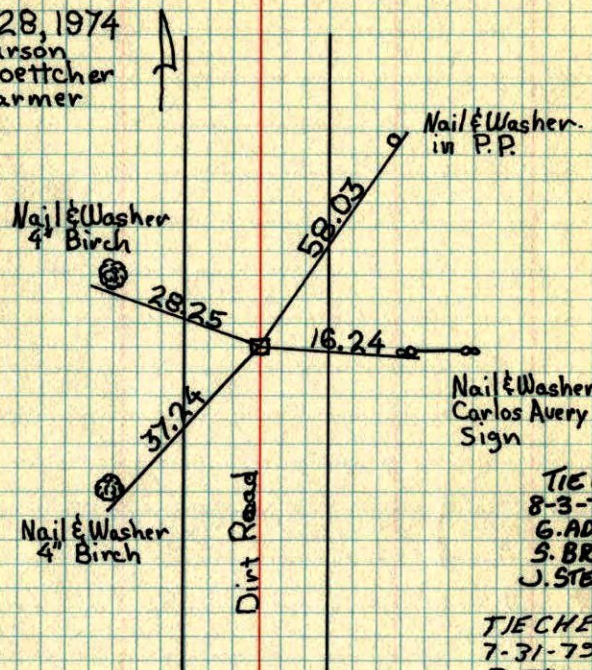
TELEPHONE NO. 448

W 1/2 Cor. of NW 1/4 Sec. 4 T 32 R 22

Found & Tied Broken off concrete monument  
with 3/8" iron rod in center (down .6'±).

Feb. 28, 1974

H. Larson  
J. Boettcher  
D. Farmer



TIE CHECK  
8-3-76  
G. ADAMS  
S. BRIEN  
J. STEPHENS

TIE CHECK  
7-31-79  
B. STEPHENS  
P. ROSS

ROLAND W. ANDERSON COUNTY SURVEYOR ANOKA COUNTY, MINNESOTA  
TEMPERATURE CORRECTED AND HORIZONTALLY TAPED MEASUREMENTS

W 1/4 cor. of NW 1/4 Sec. 4 T32 R22

Found + Tied Broken off concrete mon.  
with 3/8" iron rod in center. down .6' ±

