

CERTIFICATE OF LOCATION OF GOVERNMENT CORNER

County of Anoka

State of Minnesota

West 1/4 Corner of Sec. 2 Township 32 Range 22

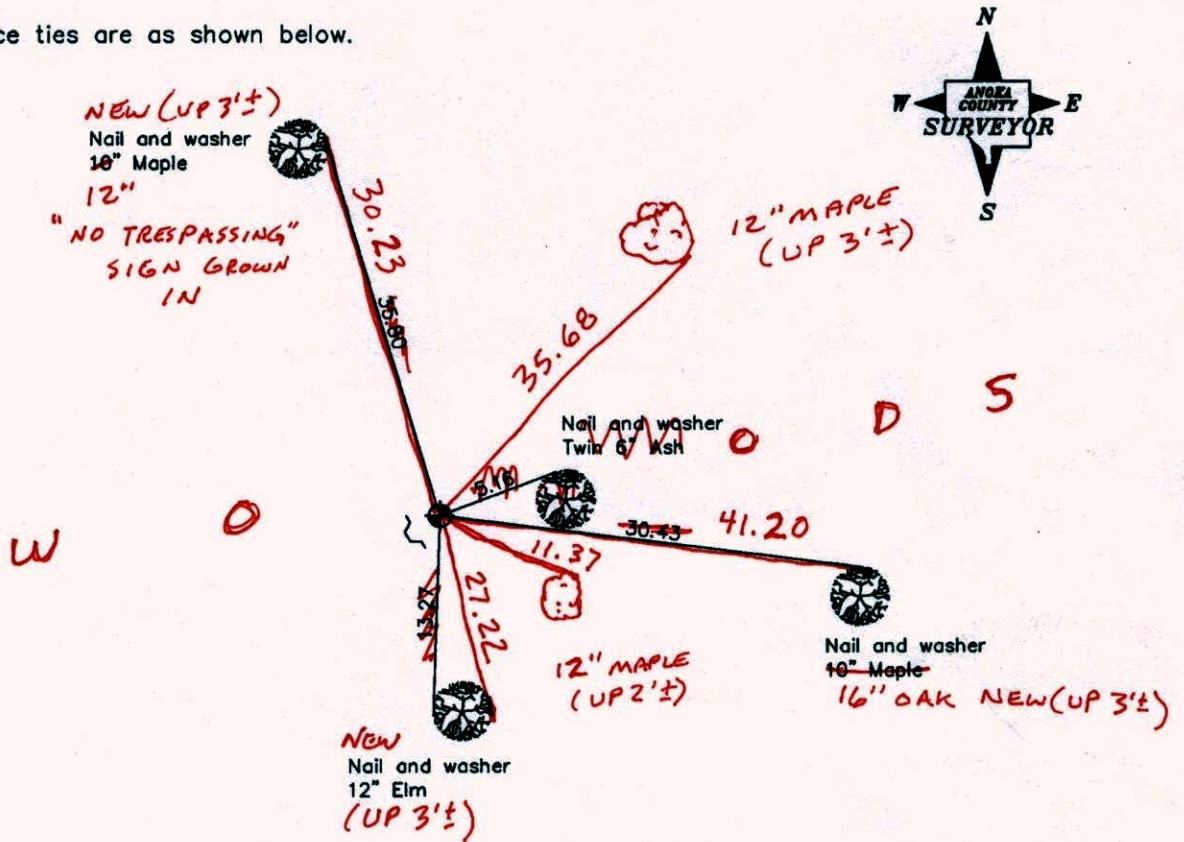
On the 23rd day of September, 1969, the described corner was evidenced by a well point up 2'±

and to perpetuate the location of said corner, at the exact location thereof, a permanent marker was placed consisting of a cast iron monument with a sign and post on the southwest side

MON. FOUND (UP 0.2'±)

AND on the 18th day of April, 2005, said permanent marker was found and the ties were updated

Updated reference ties are as shown below.



10-7-14
BK-55
TAPED

Revised date

7/12/90
8/15/95
7/18/07

N.A.D. 1983 Coordinates
(1996 Adjustment)

County Project Coordinates
Northing <u>193047.7205</u>
Easting <u>553112.8716</u>
Date <u>4/18/05</u>

I hereby certify that this United States public land survey monument record is correct and complete to the best of my knowledge and belief.

Larry D. Hoium Date 7/18/07

Larry D. Hoium, Anoka County Surveyor

Minnesota License Number 18165

CERTIFICATE OF LOCATION OF GOVERNMENT CORNER

County of Anoka

State of Minnesota

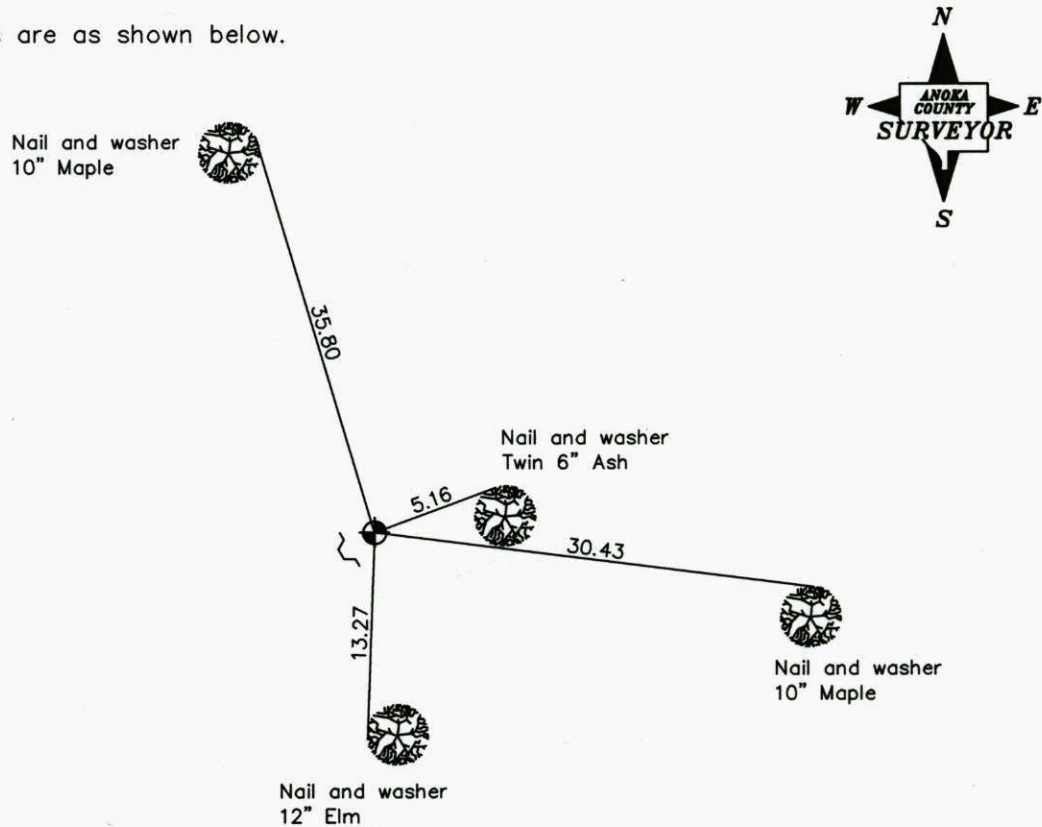
West 1/4 Corner of Sec. 2 Township 32 Range 22

On the 23rd day of September, 1969, the described corner was evidenced by a well point up 2'±

and to perpetuate the location of said corner, at the exact location thereof, a permanent marker was placed consisting of a cast iron monument with a sign and post on the southwest side

AND on the 18th day of April, 2005, said permanent marker was found and the ties were updated

Updated reference ties are as shown below.



Revised date

7/12/90
8/15/95
7/18/07

N.A.D. 1983 Coordinates
(1996 Adjustment)

County Project Coordinates
Northing <u>193047.7205</u>
Easting <u>553112.8716</u>
Date <u>4/18/05</u>

I hereby certify that this United States public land survey monument record is correct and complete to the best of my knowledge and belief.

_____ Date 7/18/07
 Larry D. Hoium, Anoka County Surveyor
 Minnesota License Number 18165

CERTIFICATE OF LOCATION OF GOVERNMENT CORNER

County of Anoka

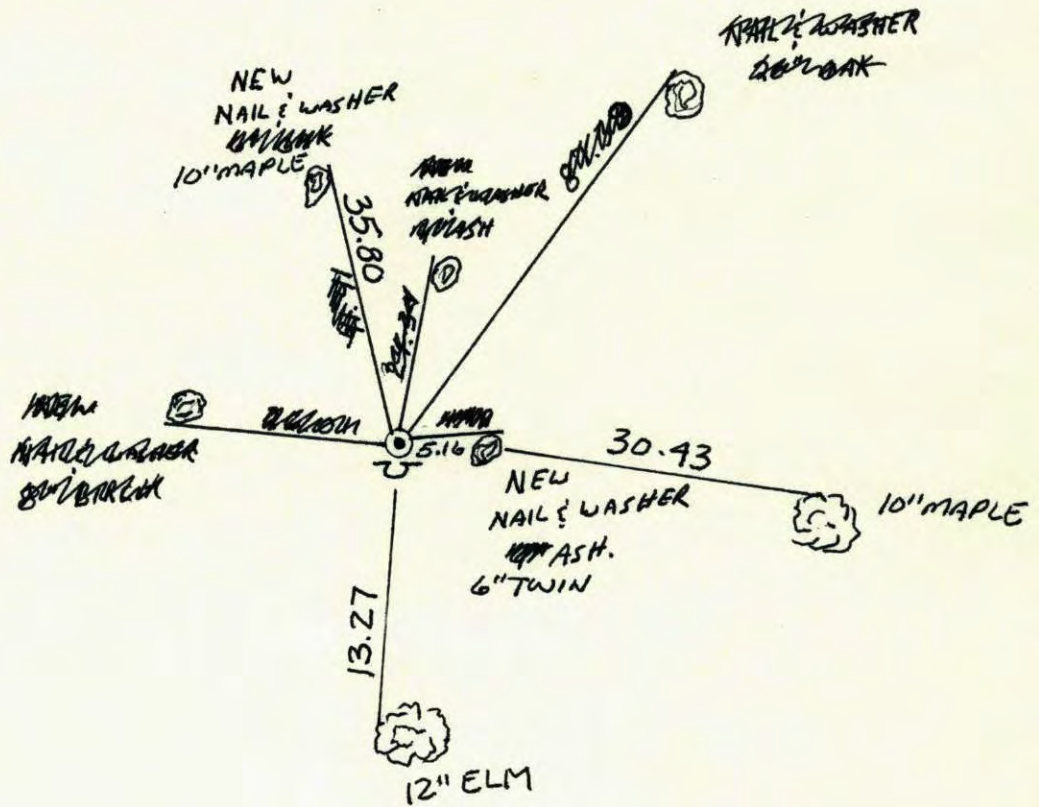
State of Minnesota

WEST 1/4 Corner of Sec. 2 Township 32 Range 22

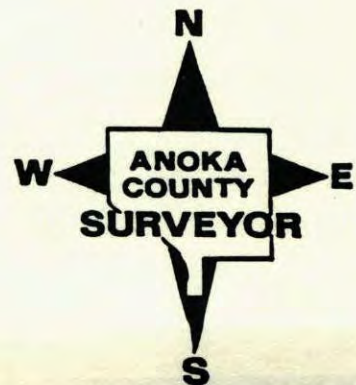
I hereby certify that on the 23 day of Sept., 1969, I found the described corner which was evidenced by WELL Point up 2"

and I further certify that to perpetuate the location of said corner, I did, at the exact location thereof, place a permanent marker consisting of Cast iron monument
SIGN & POST on South side WEST SIDE

which reference or witness monuments are located in the manner following:



Revised date	Revised date	Revised date
7-23-82		
Redrawn 2-10-88		
7-12-90		
8-15-95		
7-18-07		



CERTIFICATE OF LOCATION OF GOVERNMENT CORNER

County of Anoka

State of Minnesota

WEST 1/4 Corner of Sec. 2 Township 32 Range 22

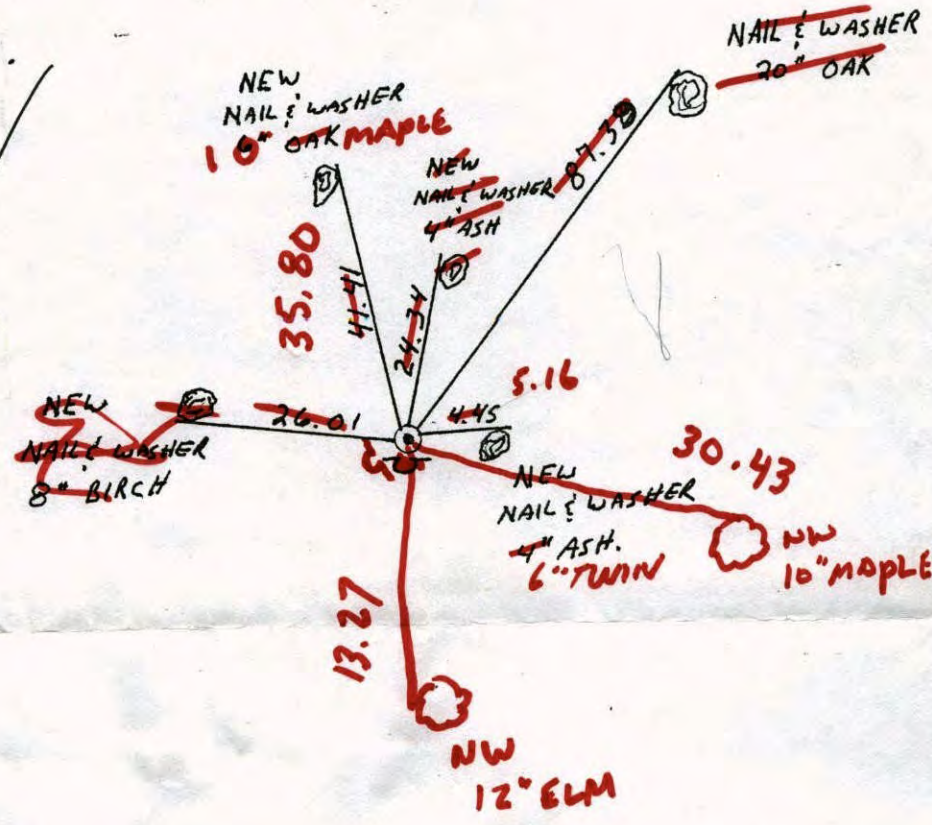
I hereby certify that on the 23 day of Sept., 1969, I found the described corner which was evidenced by WELL Point up 2"

and I further certify that to perpetuate the location of said corner, I did, at the exact location thereof, place a permanent marker consisting of Cast iron monument

SIGN & POST on South ~~side~~ **WEST SIDE**

which reference or witness monuments are located in the manner following:

Done!

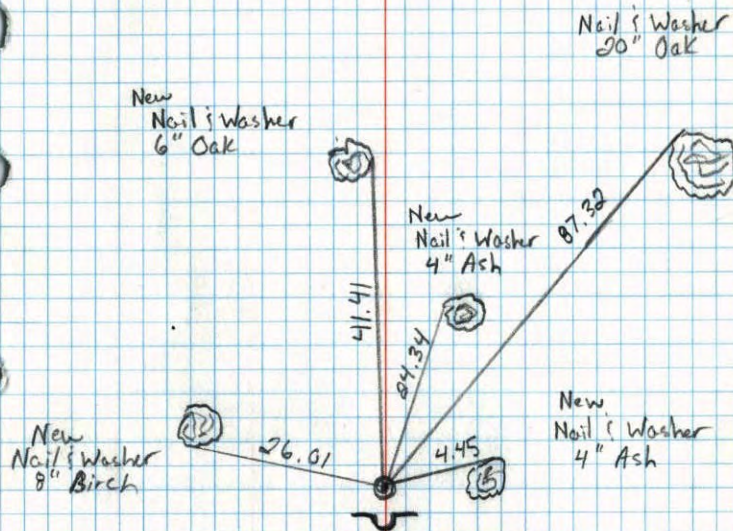


Revised date	Revised date	Revised date
7-23-82		
<i>Redrawn</i>		
2-10-88		
7-12-90		
8-15-95		
4-18-05		



West 1/4 Corner Sec. 2 T32 R22

Retied Cast Iron Monument and
Placed Sign & Post on South side



7-12-90
M. Zimmerman
D. Klersy

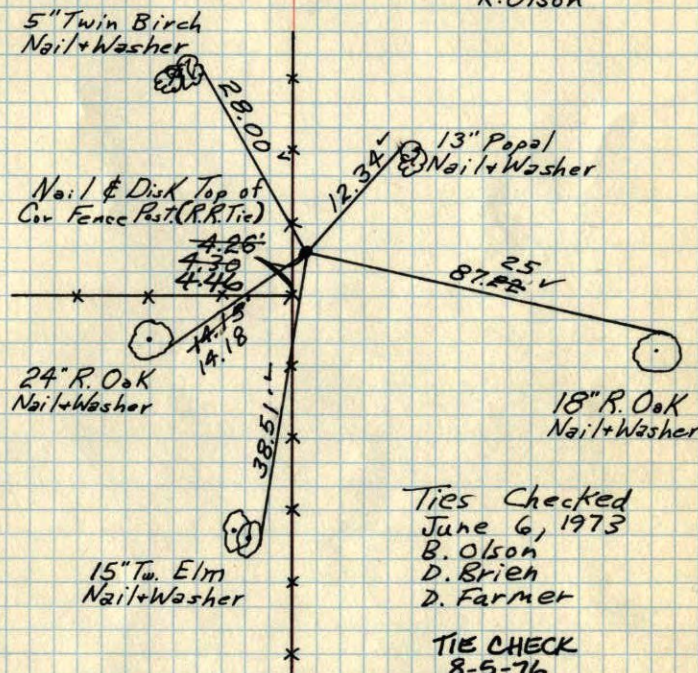
NO. 448

TELEPHONE

W 1/4 Cor Sec 2-T32-R22

Ties Taken by Jim Kurth, Apr. 1968
Found 3/4" Iron Pipe flush. Well Point up 2'±
on East side. Replaced Iron Pipe with
Cast Iron Monument up 8.1'±

Sept. 23, 1969
D. Powell
R. Olson



Ties Checked
June 6, 1973
B. Olson
D. Brien
D. Farmer

TIE CHECK
8-5-76
G. ADAMS
S. BRIEN
J. STEPHENS

TIE CHECK
8-6-79
B. STEPHENS
D. STEPHENS
P. ROSS

TEMPERATURE CORRECTED ROLAND W. ANDERSON
AND HORIZONTALLY COUNTY SURVEYOR
TAPED MEASUREMENTS ANOKA COUNTY, MINNESOTA

W 1/4 Cor Sec 2-T32-R22

Ties Taken by Jim Kurth., Apr. 1968

Found Well Point up 2'±

3/4" I.P. flush 0.13' due ~~west~~ ^{west} of Well Point

Set C.I. Mon. up 0.1'± in place I.P.

Owner put in Well Point beside I.P.

